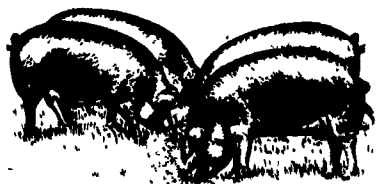


Hog Markets



State Graded Feeder Pig Sale

Carlisle Livestock Market, Inc.
Friday, Aug. 26, 1994
RESULTS ON 1531 PIGS.
TREND: COMPARED TO AUG. 12, STATE GRADED SALE PIGS WERE 5.00-15.00 LOWER. ALL PIGS WERE WEIGHED ON ARRIVAL AND SOLD BY THE HUNDRED WEIGHT.
US #1&2: 1315 HEAD. 158 HEAD 31-39 LBS. 50.00-75.00; 402 HEAD 40-49 LBS. 53.00-64.00; 538 HEAD 50-59 LBS. 52.00-66.00; 177 HEAD 60-69 LBS. 55.00-64.00; 40 72-90 LBS. 58.00.
US #2: 164 HEAD. 44 HEAD 35-39 LBS. 50.00-62.00; 120 HEAD 40-80 LBS. 40.00-53.00.
US#2&3: 20 HEAD 33-70 LBS. 30.00-40.00.
UTILITY: 6 HEAD 44-60 LBS. 30.00-40.00.
AS IS: 26 HEAD 45-70 LBS. 25.00-40.00.
NEXT STATE GRADED FEEDER PIG SALE FRIDAY, SEP. 9. SALE TIME 1:30 P.M. GRADING 7:30-11 A.M.

Indiana Hogs

Louisville, Kentucky
Thursday, September 1, 1994
INDIANA-OHIO DIRECT HOGS OPENING.
BARROWS AND GILTS: MOSTLY .50 LOWER. DEMAND LIGHT TO VERY LIGHT. US 1-3 230-260 LBS. 37.00-38.50.
US 2-3 230-260 LBS. 34.00-37.00, 210-230 LBS. 32.00-34.00.
SOWS: 1.00 LOWER.
US 1-3 300-500 LBS. 22.00-27.00, 500-650 LBS. 26.00-29.00, FEW 30.00.
THIS REPORT PREPARED BY THE LOUISVILLE, KY. OFFICE OF THE USDA LIVESTOCK AND GRAIN MARKET NEWS SERVICE--502-582-5287.

Jersey Shore Livestock Market, Inc.

Auction every Thursday at 4:00 p.m.
Jersey Shore, Pa.
Report supplied by Auction Thursday, September 1
RETURN TO FARM CALF 100.00-195.00.
GOOD VEAL: 60.00-99.00.
COMMON VEAL: 20.00-59.00.
COMMON STEERS: 55.00.
COMMERCIAL COWS: 40.00-45.00.
CANNERS-CUTTERS: 34.00-46.00.
SHELLS: 32.00-38.00.
CHOICE HEIFERS: 62.00-64.50.
SELECT HEIFERS: 58.00-61.00.
COMMON HEIFERS: 49.00-57.00.
GOOD FEEDERS: 70.00-93.00.
COMMON FEEDERS: 45.00-69.00.
BULLS: 46.00-51.00.
HEAVY HOGS: 22.00-36.00.

New Holland Feeder Pigs

New Holland, PA
Wed., Aug. 31, 1994
Report Supplied by Auction
TODAY: 1383 HEAD
LAST WEDNESDAY: 723 HEAD
LAST YEAR: 992 HEAD
TREND: COMPARED TO LAST WEDNESDAY, FEEDER PIGS 8.00-15.00 LOWER. ALL PIGS WEIGHED ARRIVAL AND SOLD BY THE HUNDRED WEIGHT.
GRADE 1-2: 142 HEAD 31-38 LBS. 66.00-74.00, WEIGHTED AVERAGE 36.57, WEIGHTED PRICE 68.39; 414 HEAD 41-49 LBS. 54.00-70.00, WEIGHTED AVERAGE 44.71, WEIGHTED PRICE 62.10; 356 HEAD 50-57 LBS. 51.00-70.00, WEIGHTED AVERAGE 53.26, WEIGHTED PRICE 61.43; 64 HEAD 60-63 LBS. 64.00-68.00, WEIGHTED AVERAGE 60.23, WEIGHTED PRICE 66.13; 7 HEAD 79 LBS. 56.00, WEIGHTED AVERAGE 79, WEIGHTED PRICE 56.00; 8 HEAD 84 LBS. 71.00, WEIGHTED AVERAGE 84, WEIGHTED PRICE 71.00.
US#2: 24 HEAD 30-39 LBS. 50.00-64.00, WEIGHTED AVERAGE 31.63, WEIGHTED PRICE 53.77; 76 HEAD 41-48 LBS. 44.00-46.00, WEIGHTED AVERAGE 42.42, WEIGHTED PRICE 45.29; 51 HEAD 52-59 LBS. 42.00-50.00, WEIGHTED AVERAGE 53.61, WEIGHTED PRICE 47.33; 25 HEAD 60-66 LBS. 43.00-60.00, WEIGHTED AVERAGE 62.16, WEIGHTED PRICE 49.50; 7 HEAD 71 LBS. 45.00, WEIGHTED AVERAGE 71, WEIGHTED PRICE 45.00; 11 HEAD 82 LBS. 48.00, WEIGHTED AVERAGE 82, WEIGHTED PRICE 48.00.
US#2-3: 6 HEAD 35 LBS. 45.00, WEIGHTED AVERAGE 35, WEIGHTED PRICE 45.00.
SLAUGHTER: 13 HEAD 20 LBS. 142.00, WEIGHTED AVERAGE 20, WEIGHTED PRICE 142.00; 30 HEAD 27 LBS. 70.00, WEIGHTED AVERAGE 27, WEIGHTED PRICE 70.00.

New Holland Hog Auction

Lancaster, Pa.
Monday, August 29, 1994
Hog Receipts:
Today 1276
Last Monday 951
Last Year 906
HOGS: Compared to last Monday barrows and gilts 1.00 lower.
BARROWS AND GILTS: US 1-2 210-250 lb 41.75-43.00.
US 1 210-240 lb 43.50-44.25.
US 1-3 210-260 lb 41.00-41.75, 190-210 lb 39.75-41.00.

Hay & Grain Markets



Green Dragon Hay

Ephrata, Pa.
Friday, Aug. 26, 1994
Report Supplied by Auction
59 TOTAL LOADS.
MIXED HAY: 58.00-157.00.
ALFALFA: 50.00-102.00.
TIMOTHY: 90.00-157.00.
ORCHARD GRASS: 55.00.
STRAW: 105.00-157.00.
EAR CORN: 40.00-90.00.
OATS: 2.00-2.45 BU.
RYE SEED: 4.00 BU.

Good's Hay

Leola, Pa.
Wed., Aug. 31, 1994
Report Supplied by Auction
TOTAL LOADS: 66.
CORN: 69.00-75.00.
STRAW: 85.00-130.00.
MIXED HAY: 50.00-135.00.
ALFALFA: 40.00-130.00.
TIMOTHY: 115.00-150.00.
GRASS: 70.00-127.00.

Diffenbach Auction Center

New Holland, Pa.
Monday, August 29, 1994
Report Supplied by Auction
TOTAL LOADS: 95.
ALFALFA: 72.00-162.00.
MIXED HAY: 57.00-165.00.
TIMOTHY: 65.00-150.00.
ORCHARD GRASS: 60.00-100.00.
STRAW: 55.00-160.00.
EAR CORN: 69.00-90.00.
OATS: 2.00.
RYE: 3.75-4.25.

Dewart Hay

Dewart, Pa.
Monday, Aug. 29, 1994
Report Supplied by Auction
14 LOADS OF HAY, 41.00-85.00.
CORN: 62.00-79.00.
OATS: 2.05 BU.

Belleville Hay

Belleville, PA
Wednesday, Aug. 31
Report Supplied by Auction
12 LOADS OF HAY.
ALFALFA HAY: 52.50-90.00.
MIXED HAY: 50.00-102.50.
EAR CORN: 7 LOADS, 70.00-100.00.
OATS: 2 LOADS, 1.60 BU.
BARLEY: 1.90 BU.
STRAW: 6 LOADS, 40.00-97.00.
WHEAT: 2.90 BU.

Kutztown Produce Auction

Report Supplied by Auction
Saturday, Aug. 27, 1994
TOTAL LOADS: 10.
GRASS HAY: 58.00-105.00.
STUBBLE HAY: 80.00.
CLOVER HAY: 58.00.
TIMOTHY HAY: 75.00-92.00.
STRAW: 90.00.
EAR CORN: 75.00.

Leinbach's Hay

Shippensburg, PA
Aug 27 and Aug. 30
Report Supplied by Auction
34 LOADS.
ALFALFA: GOOD 86.00-102.00, FAIR 50.00-70.00.
MIXED HAY: 46.00-100.00.
BROME GRASS: 72.00-95.00.
ORCHARD GRASS: 50.00-92.00.
STRAW: 98.00.
EAR CORN: 76.00-87.00.
MULCH: 25.00-42.00.

Westminster Hay

Westminster, Md.
Tuesday, Aug. 29, 1994
Report Supplied by Auction
115 LOADS.
ALFALFA: .80-3.20 BALE.
TIMOTHY: 85.00-140.00, .80-2.80 BALE, 6.00-16.00 LARGE ROUND.
MIXED HAY: .75-2.20 BALE.
GRASS: 35.00-55.00, 5.00-20.00 LARGE ROUND.
STRAW: .95-1.85 BALE.

Kirkwood Hay Auction

Kirkwood, Pa.
Tuesday, Aug. 30, 1994
Report Supplied by Auction
30 LOADS OF HAY.
TIMOTHY: 108.00-147.00.
ALFALFA: 1ST CUTTING 107.00-135.00, 2ND CUTTING 98.00-106.00, 3RD CUTTING 25.00-134.00.
GRASS: 60.00-111.00.
WHEAT STRAW: 103.00-132.00.
CORN: 72.00-100.00.
OATS: 2.10 BU.
SALE TIME 11 A.M.

Regional Hay

August 29, 1994
Eastern, Pa.
HAY & STRAW MARKET FOR EASTERN PA - (ALL HAY NO. 2 AND BETTER. PRICES PAID BY DEALERS AT THE FARM & PER TON). HAY UN-EVEN 5.00 LOWER TO 5.00 HIGHER, STRAW STEADY TO 10.00 HIGHER. ALFALFA 70.00-100.00; MIXED HAY 55.00-100.00; TIMOTHY 65.00-105.00; STRAW 60.00-100.00; MULCH 25.00-40.00.

SUMMARY OF LANCASTER CO. HAY AUCTIONS FOR WEEK ENDING 8/26/94. PRICES PER TON: LOADS: 109 HAY, 42 STRAW & 64 EAR CORN. ALFALFA 65.00-150.00; MIXED HAY 65.00-157.00; TIMOTHY 70.00-157.00; STRAW 90.00-160.00; EAR CORN 60.00-99.00.

SUMMARY OF CENTRAL PA. HAY AUCTIONS FOR WEEK ENDING 8/26/94. PRICES PER TON: LOADS: 56 HAY, 7 STRAW & 41 EAR CORN. ALFALFA 60.00-87.50; MIXED HAY 50.00-130.00; TIMOTHY 65.00-140.00; STRAW 62.00-97.50; EAR CORN 75.00-110.00.

Keister's Hay

Middleburg, PA
Aug. 30, 1994
Report supplied by auction
56 LOADS, 23 LOADS OF HAY. MIXED HAY 50.00-110.00. ALFALFA HAY: 95.00. STRAW: 1 LOAD AT 75.00. EAR CORN: 21 LOADS, 70.00-95.00. SHELLED CORN: 2.70 BU. RYE: 3.80-4.00 BU. OATS: 1.50-1.90 BU.

North Jersey Market

Hackettstown, N.J.
Report Supplied by Auction
Tuesday, Aug. 30, 1994
Hay—Straw & Grain Report
ALFALFA: 5 LOTS, 1.00-2.40 BALE. MIXED HAY: 3 LOTS, 2.00-2.10 BALE. TIMOTHY: 1 LOT AT 1.50 BALE. CLOVER: 2 LOTS, 1.30 AND 2.50 BALE. GRASS: 12 LOTS 1.70-3.80 BALE. OATS: 1 LOT AT 5.25 BAG. TOTAL: 24 LOTS.

KIRKWOOD HAY AUCTION

Hay, Straw and Grain Auction
EVERY TUESDAY
11:00
Located Rt. 472 5 miles south of Quarryville or 6 miles north of Oxford corner of Rt. 472 and Noble Road.

Lloyd H. Kreider,
Auctioneer
AU-000513L
No out of state checks

PIGS

STATE GRADED SALE
FRI., SEPT. 9
1:30 P.M.

AT Carlisle

LIVESTOCK MARKET, INC.
Exit 12 ON I-41
(717) 240-4811 or
Evenings Jim, 240-2350

WESTMINSTER HAY & STRAW AUCTION

WESTMINSTER, MD

Please note that as of Tuesday, Sept. 6, the Auction will begin at 11:00 a.m.

PENNFIELD GRAIN BANK

Pennfield Offers A Sound Program For The Dairy Farmer To Use His Grain "Same As Cash" To Reduce His Monthly Feed Bill And To Avoid Having To Take "Harvest

Prices Week Of 9/5/94
Corn \$2.75 Bu.
Soybeans \$5.88 Bu.
Barley \$1.85 Bu.

- No Storage Charges
- Prices Updated Weekly
- Grain Bank Balance Shown On Each Invoice
- No Hidden Charges

For every ton of qualifying dairy feed purchased you will receive one ton of grain back hauled at no charge

For more information call 1-800-451-4514 or write to Pennfield Grains, Inc., P.O. Box 100, Piquette, MI 49751

Lancaster Farming

In This Issue

FEATURES

South Central Dairy	A22
Wayne Co. Fair	A23
Central Holstein	A27
N.E. Championship	A28
Southeast Dairy Show	A30
Allentown Fair	A31
Chester Champions	A32
Tioga Fair	A34
Huntingdon Dairy	A36
Paul Whipple	B 3
Special Care	B 7
State Fashion Revue	B12
Somerset Fair	B14
4-H's Visit Poland	B16
York Lambs	B19
West End Fair	B19
Cumberland Roundup...C 4,D 6	
Western Region Show	C 7
Tioga Fair Champs	C 8
Chester Goat Roundup	C 9
Bucks Swine	D 3
Bedford Dairy	D 4
Cumberland Ag Expo	D 5
Mifflin Youth Fair	D 7

DAIRY

All-American Plans	A25
Dairy Bowl	A35
DHIA Focus	A37

Four Sections

HOME AND YOUTH

Homestead Notes	B 3
Home On The Range	B 6
Cook's Question Corner	B 8
Kid's Korner	B10
Farm Women Societies	B17
4-H Happenings	B28

COLUMNS

Now is the Time	A10
On Being A Farm Wife	B 2
Family Living Focus	B 5
Ida's Notebook	B11
Consuming Thoughts	B15
You Ask	B28

DEPARTMENTS

Editorial	A10
Farm Calendar	A10
Farm Forum	A10
Futures	A16
Mailbox Markets	B20
Sale Reports	B24
Public Auction Register	A39,B26
Fair Happenings	C 2
Business News	C 6
Classified Ads	C10, D 9

Walter M. Dunlap and Sons offers all cattle feeders two marketing days. Give us a call for advice and marketing conditions.

MONDAYS OR WEDNESDAYS

Consign With Us - For The Marketing Edge

Next Feeder Cattle Sale
Wednesday, September 7 - 11:00 A.M.

Walter M. Dunlap and Sons
Cattle Feeder Stockyards
217 N. 2nd St.
P.O. Box 100
Carlisle, PA 17015
(717) 240-4811