

Take Exit 20B
Off Of 83, 5/4 MI. West
To Belmont Farm.

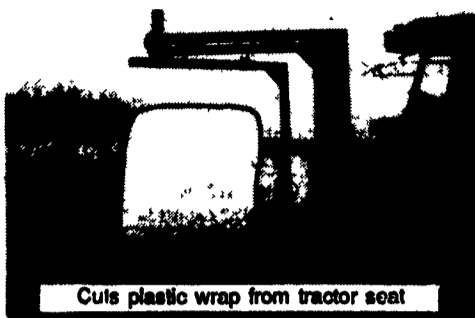


JD 2355
1800 Hrs., Very Nice Cond.
\$13,000
410-833-9091

FARMLUND INC.
ROUND BALE WRAPPERS

Excellent For Dry Hay &
Hi-Moisture Bales

Best Made Made In USA Best Price
A One Man Operation



Cuts plastic wrap from tractor seat

"Two machines in one." This hydraulic bale wrapper wraps bales fast and can be used to move bales to barn or feed lot.

3164 Oregon Pike, Leola, Pa. 17540
Lancaster County
717-656-7499 Call Collect
Dealerships Available

UFT
HIGH DUMP WAGONS



For The Best
Dump Boxes &
The Best Price See...

ZIMMERMAN'S FARM SERVICE

1/2 Mile West Off Rt. 501 On School Road
Bethel, PA
717-933-4114

TRACTORS

- MF 2675 cab, air, 24 speed
- MF 1135 w/canopy, good rubber, sharp
- MF 1085, 34" rubber, good tractor
- MF 285 w/cab
- MF 285, good rubber w/wet brakes
- MF 165 38" rubber, good running tractor
- MF 135 gas, power steering, recent overhaul
- MF 135 gas, good running
- MF 85 gas, good front
- MF 50, diesel, good tractor
- Massey Harris Pony
- 455 DA quick attach loader

EQUIPMENT

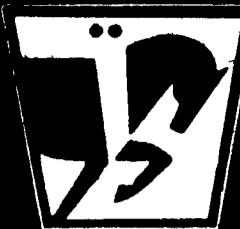
- NH 315 baler w/thrower
- NH 489 haybine
- H&S 9' hay tedder
- (2) MF 7 Dyna-balance mowers
- IH 1250 grinder mixer
- IH 510 7x18 grain drill w/press wheels
- Melroe 7x18 grain drill, like new
- JD 16 hole grain drill
- Gravity box w/running gear
- INT 710 4x16 spring reset plow
- MF 880 spring reset plow: 4x18
- 7 tooth Kewanee Spt chisel plow w/3 bars, hi clearance
- Dunham 8 tooth trail chisel plow, hi clearance
- Cultipackers: 14', 12' and different sizes
- JD 10' #950 cultimulcher
- (2) 5' rotary mowers
- Used Brillion cultipacker and cultimulcher parts
- 2 sets of packer pups
- New farm and corral gates
- Gehl Forage Wagon
- 16' 3 beater forage wagon w/good gear

MF Tractor parts Dismantling: 20, 30, 35, 40, 50, 65, 85, 90, 135, 150, 165, 175, 178, 180, 283, 285, 399
4WD: 1080, 1085, 1100, 1130, 1135, 1150 w/cab,
1155, 2805, 3680, MH 22, 44, NH 785 skidldr.

NOLT'S EQUIPMENT

403 Centerville Rd., Newville, PA 17241
off 81 exit 11, 2 miles N. on 233

(717) 776-8242 No Sunday Calls
No Out-Of-State Personal Checks We Ship UPS



WISCONSIN HEAVY DUTY ENGINES

Serving The Community Since 1971

Wisc.-Robin, Kawasaki, Kohler, Briggs & Stratton, Tecumseh, Honda

Rockford and Twin Disc Clutch Parts & Accessories

WISCONSIN REPLACEMENT ENGINES New & Rebuilt Short Blocks

Special Purchase V465D 65 HP Wisconsin, Electric Start w/Alternator, Ideal for Grinders, Large power Units, Reg. List \$4,836 ONLY \$2,885 (While They Last)
• W2-1250, 30HP, electric start.....\$1595
• Special Prices on 30HP VH4 crank start engines No Tank.....\$1,945

Authorized Service Center

- Complete Rebuilding
- Large Parts Inventory

FISHER ENGINE SERVICE

3141 Old Philadelphia Pl. • Bird-In-Hand, PA 17585
For Service Call: 717-768-3729

J&L EQUIPMENT HAS SOLD THE BUSINESS OF

GATES • FREESTALLS • HEADLOCKS TO:

MARTIN'S FARM SUPPLY



HEADLOCKS
1 1/4 OD Pipe
Sched. 40 Pipe
3 Sizes
Adjustable
Quick Release



FREESTALLS
2 1/4 OD Pipe
Sched 40 Pipe
Several Styles
4 Bolt 1/4" Clamp
Painted & Galvanized
Basket Board Bracket



GATES
5 & 6 Bars
48" High
1 1/2" & 1" Pipe
1 1/2" & 3/4" Pipe
Sched 40 Pipe
Strap Hinges
Spring Latches

Fence Panels • Slanted Bar Panels
All Headlocks, Gates & Panels made to fit your measurements

Martin's Farm Supply

Call: St Thomas Pa 717-369-5702
7 Miles West of Chamberburg Pa

Best Buys in Used Equipment

TRACTORS

- Case 8C Tractor
- Case IH 585
- Case IH 885
- Case 995
- Case 1370
- Case 1690
- IH 574 w/Loader
- IH 784
- Farmall 300
- Farmall H
- Ford 8N

HARVESTING EQUIPMENT

- Gleaner F2 Combine
- Gleaner 6RN Comhead
- Hesston 2000-100 Harvester
- NI 717 Combine
- NI 844N
- NI 315 Sheller
- NI 324 Sheller
- NI 727 Husking Bed
- NI 323 1-Row Corn-picker
- NI 325 12 Row Husking Bed

- IH 735 5-Bottom Vari-Width Plow
- Kverneland 3 Bottom Plow

MISCELLANEOUS

- Kverneland Bale Wrapper
- NH 36 ft. Elevator
- Gehl 99 Blower
- IH 600 Blower
- IH 56 Blower
- Automatic Roller Mill
- IH 1050 Grinder Mixer
- NI 213 Spreader
- NI 218 Spreader
- HM 1674 Spreader
- Gehl 250 Spreader
- 500 Gal. Century Sprayer
- Weaverline 430
- Case IH 5100 Soybean Drill
- IH 5100 Drill
- JD KBB 13x7 Drill
- JD 8300 Drill—Soybean Special!
- JD 8350 Drill, 21x7
- NI 3618 Spreader
- NI 3626 Spreader
- Miller Spreader
- Hesston 16 Ft. Forage Wagon
- Gehl 16 Ft. Forage Wagon
- JD 125 Forage Wagon
- JD 216 Forage Wagon
- Calumet Spreader
- 300 Gallon Sprayer

HAY EQUIPMENT

- NI 486 Round Baler
- NH 78 Baler
- NH 479 Haybine
- NH 1495 SP
- NH 848 Round Baler
- NH 850 Round Baler
- Hesston 1014's
- Hesston 1090 Wind-rower
- Hesston 1091 Wind-rower
- IH 445 Square Baler
- IH 1190 Mower Cond.
- (2) Case Int. 8330 Windrower
- NI 512 12 Ft. Mower Conditioner
- Deutz-Allis 10 Ft. Disc Mower
- Vicon 321 Disc Mower

TILLAGE

- Ford 5-Bottom Plow
- Case 16" Reset Plow, 5 Bottom
- IH 550 5 Bottom Plow
- JD 6-18 Plow
- Bush Hog 15 Ft. Disk
- Case 7 Tooth Consertill
- IH 720, 18" 5-Bottom Plow
- IH Field Cultivator
- IH 4 Row Cultivator
- Taylor-Way 24' Cushlon Disk
- Case 15 Ft. Heavy Disc (Nice)
- JD 4x16 Trip Plow
- JD 5x16 Trip Plow

LOADERS

- Case 1835B
- Case 1835C
- Case 1845 Diesel
- Case 1845B Diesel
- IH 3200B
- Ford Loader

Super Deals On

MILLER PRO Forage Boxes

Miller PRO Model 5100 Forage Box

Completely new design.

4-speed synchro gear transmission, with bronze worm gear enclosed in oil bath for long life (5 year warranty).

Three 18" drum-style metering augers with welded tines and independent feathering clutch.

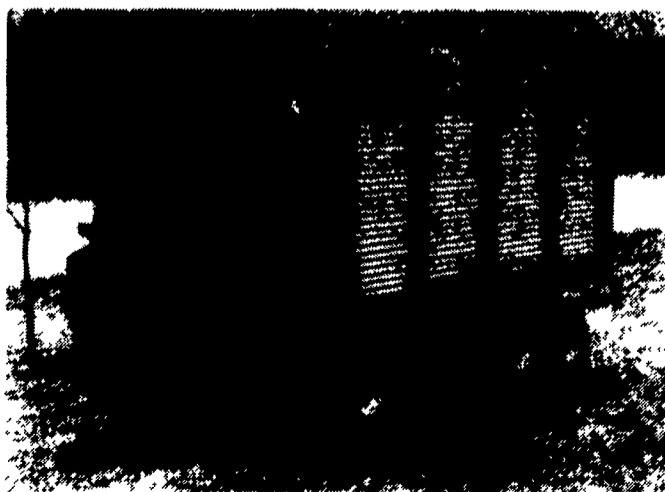
Outfeed apron also has an independent feathering clutch. 7-4" inside width.

Robust steel unibody box with high strength alloys at stress points for long life (10 year warranty).

20 gauge aluminized steel sides, back and removable roof.

Best warranty in the industry.

the ultimate smooth unloading system



(22) * 1 Unit Left But More Coming In

ZIMMERMAN'S FARM SERVICE

1/2 Mile West Off Rt. 501 On School Rd., Bethel, Pa.
717-933-4114

ZIMMERMAN'S FARM SERVICE

1/2 Mile West Off Rt. 501 On School Rd., Bethel, Pa.
717-933-4114



SPECIAL ON SUNFILM BALE WRAP!