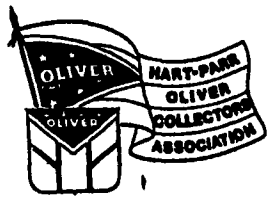


1 FARM EQUIPMENT

CALLING ALL HART-PARR, OLIVER and CLETRAC OWNERS! THIS ASSOCIATION IS FOR YOU!



For a **FREE** Application Blank and More Details Write To:
HART PARR OLIVER COLLECTORS ASSOCIATION
 PO Box 685 Dept LF
 Charles City, IA 50616

4WD SIDE DUMP HARVESTER

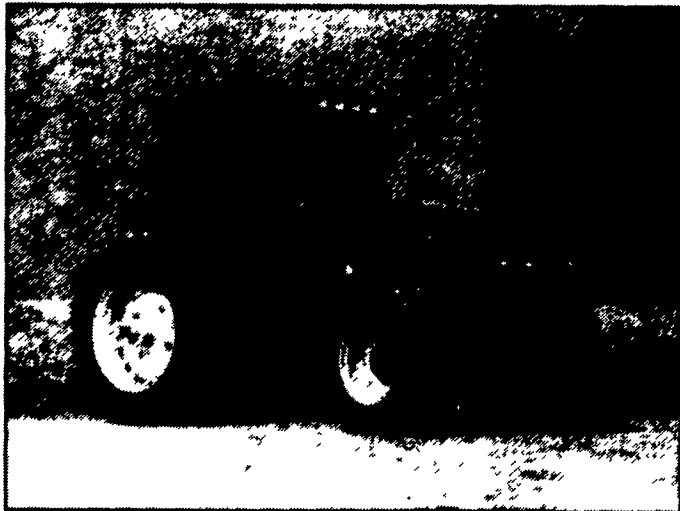


HIGH CAPACITY FORAGER WITH 345 HP ENGINE INCLUDES: A/C, ARTICULATING STEERING, HYDROSTATIC GROUND DRIVE WITH 7 FT GRASS PICKUP HEAD AND 4 ROW CORN HEAD. DUMP BOX CYCLES IN 45 SECONDS.

MASON DIXON FARMS
 GETTYSBURG, PA 17325
 (717) 334-4056

For The Way You Farm Today

Fingertip Powershift Control, Improved Field Visibility and The Most Comfortable Cab Ever



Model 9650
147 PTO HP (109.7 kW)
In Stock Ready For Delivery

With their new 18x9 speed full powershift transmissions that electronically control the engagement of massive gears with just the tap of a hand... their cab-forward design that permits a clear, unobstructed view of the field in all directions... and their roomy, comfortable cabs, that feature a unique swivel, air-ride seat and an exclusive seat-mounted control console, the new 9600 Series tractors are clearly ahead of the time.

Every component — from the sleek, sloping hood, to the rugged, cast-iron mainframe to the world-proven air-cooled diesel engines, that require less maintenance — has been designed to match the way you farm today. The result is greater comfort, better performance and improved productivity.

Compare the features and specifications for yourself. Better yet, stop by BHM Farm Equipment soon and try out the 9650 model for yourself. You have to drive it to believe it.

Experienced Mechanic Needed Immediately
Benefit Package, Holidays, Uniforms & More —
CALL TODAY

LAWN & GARDEN

"Call Us For Your New Equipment Needs. Ask About Our Program Options."

USED EQUIPMENT

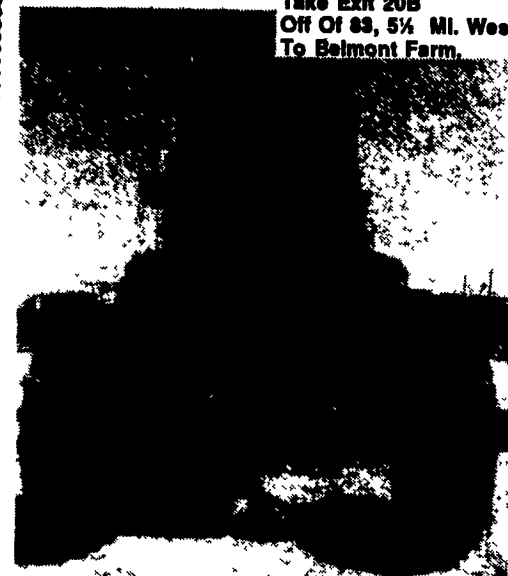
- Case 1690 low hrs., excellent condition
- (2) NH 479 haybine
- NH 499 haybine
- NH 411 discbine w/new rolls
- Vicon VM 321 discbine
- NH 320 baler w/thrower
- NH 280 baler w/thrower
- Gehl 2R forage head
- NH 880 R2, 2 row head
- NH 880 W windrow pickup head
- NH 717 R2 header
- JD 2 bottom plow
- Dunham 7 shank chisel plow 3 pt.
- JD rake w/dolly wheel
- Gill Multi-Purpose Landscape Machine, Make Offer
- Athens 131 disc
- New Athens 132 - 28 disc, cash \$7,900
- JD 4R Corn Planter, Plateless, Model 1240

(717) 243-2686

R & W EQUIPMENT

35 E. Willow St., Carlisle, PA 17013
 Parts Shipped UPS Daily

Take Exit 20B Off Of 89, 5/4 MI. West To Belmont Farm.



IH 1466

4x4, CAH, Runs Excellent
 145 H.P.

\$10,000/Offer
410-833-9091

Best Buys in Used Equipment

USED EQUIPMENT

- MF 1155 tractor w/cab, 18.4x34 tires, 2,400 hrs.
- Farmall 300, gas w/fast hitch
- 500 gallon tow type sprayer, 26' boom, roller pump
- Century 200 gallon 3 pt. sprayer w/26' boom, nice
- 6 ton running gear
- 7' pull type Ni sickle bar mower
- (1) NH 489 mower conditioner
- Brillion 16' transport harrow
- JD 2 row corn head
- Woods M5 Dixie 5' rotary cutter
- JD 3 btm. pull type plow w/coulters, coverboard & cylinders
- Taylor-Way 3 pt. chisel plow, 10'
- Taylor-Way 3 pt. 13' chisel plow
- Taylor-Way 13' offset disc w/cushion gangs, very good
- IH 183 4 row cultivator
- NH 68 baler w/50 thrower, good condition
- Glenco 12' pull-type field cultivator
- IH 456 4R Cornplanter, dry fertilize w/insecticide
- 18.4x34 snap on duals

Unverferth gravity boxes in stock

We Ship Parts UPS Daily

BANGOR IMPLEMENT

6 Flicksville Rd., Bangor, PA 18013

215-588-5922 or 215-588-5924

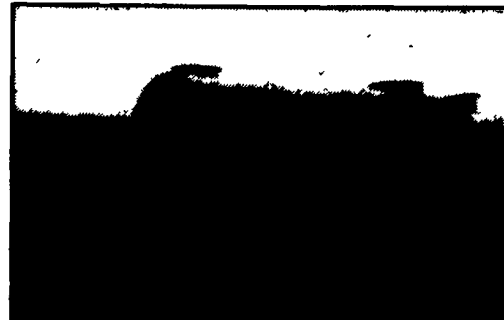


MANURE TANK REBUILDING

REBUILD YOUR OLD TANK AT A FRACTION OF THE COST OF A NEW ONE



Before Rebuilding



After Rebuilding

COMPLETELY REBUILT FROM TOP TO BOTTOM

- Tank Replaced
- New Paint
- Wheels & Chassis Sandblasted
- All Moving Parts Replaced

Complete Job For Under \$4,500⁰⁰

We Also Build Truck Tankers



DILLER EQUIPMENT

Call Anytime, Except Sunday - Call or Write For Free Literature

Chambersburg, PA 17201 • (717) 369-2691 or 1-800-523-8002