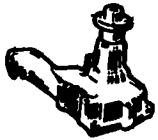


Spring Garden Repair

Isaac S. Stoltzfus
145 Spring Garden Road
Kinzers, PA 17535



Gas & Diesel Engine Rebuilding
Cast & Aluminum Head Rebuilding & Welding
Block Boring & Slewing
Flywheel Grinding
Engine Parts
Tractor Pistons & Sleeve Kits
Rebuilt Tractor Heads
New & Rebuilt Water Pumps



New JD 7700 Tractor, 125 hp 42" duals, 2WD 170 hours Must sell \$49,000

410-648-5473

Snapper Head for 1890 or 1895 NH Forage Harvester 3 row, good condition \$2500 OBO 315/389-4357

JD 300 compicker, 3RN, good condition, \$7500. 410-692-6331 evenings.
JD 300 corn picker w/3RN corn head in good condition. (717)859-3502.

JD 2RN corn head. JD 1R snapper corn head. 717-665-4743.
JD 2RN corn head in good condition. (717)859-3502.

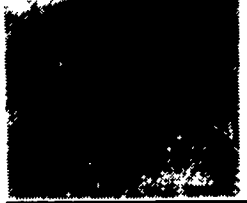
PONDS STEEL PIPE
Used, Surplus, New All Sizes Available Including Large O.D.
H. Schwartz & Sons, Inc.
302/656-0276 215/331-4240 800/523-3500

TGMI Tailgate Mulcher/Bale Chopper



Sale Price \$4,695.00
Performance: 2 Bales per minute MINIMUM. Powerful 18 HP Engine. 30' Discharge distance from hose end up to 100' Hose capacity.
Featuring: No belts, no clutches, no knives, Kohler Magnum Electric Start.

Aqua Mulcher 400 Hydro Seeder



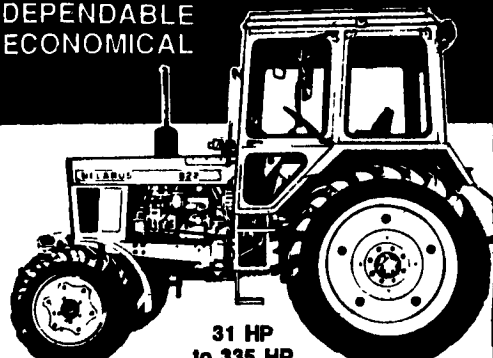
Sale Price \$8,995.00
• Hydro-Seeds • Hydro Mulches
• Acid Straw • Waters
• Over-Seeds • Waters
Proven Features:
• All steel construction
• Paddle agitation
• Hydrostatic drive
• Centrifugal pump
• Clutch pump Drive

Ringo Hill Farms Equipment Co., Inc.
1624 Route 212 • Quakertown, Pa. 18951
Phone: (610) 346-7340 Fax: 610-346-8041

Belarus

NINE TEEN SUCCESSFUL YEARS IN AMERICA!
Outstanding Parts Availability

DEPENDABLE ECONOMICAL



31 HP to 335 HP

QUALITY TRACTORS BARGAIN PRICES!
Full Year Warranty on Parts and Labor
Join The Move To Belarus

- 31 HP Diesel w/ROPS..... \$7,095
- 36 HP Diesel 4 WD w/ROPS.... \$9,995
- 57 HP Diesel, 4WD w/ROPS.. \$14,200
- 65 HP Diesel 4WD w/Cab..... \$16,600
- 81 HP Diesel 4WD w/Cab..... \$18,800
- 100 HP Diesel 4WD w/Cab..... \$22,700
- 185 HP Diesel 4WD w/Cab..... \$38,800

Husco Hydraulics

Now Available On Belarus Tractors

Serving Southern Pennsylvania and Maryland

ANDERSON TRACTOR SALES, INC.

Front End Loader Specialists

536B South Main St | 4600 Breidenbaugh Lane
Shrewsbury, PA | Glenarm, MD

717-235-0213 • 235-5483 Toll Free 1-800-457-5705



WENGERS, INC.

251 South Race St., Myerstown, PA 17067

717-866-2130

HOURS: Mon.-Fri. 7:30 to 5:00; Sat. 7:30 To Noon

NIGHTS:

PHONE:

717-866-7147

717-273-9089

FAX:

717-866-4300



Tennant 92 Diesel Sweeper
4 Cylinder, Perkins Engine,
Low Hours- As Is- Needs
Transmission
\$1,900



1968 Cat 941, Direct Start,
Powershift, Pedal Steer,
Runs Good.
\$11,500



Fiat FL10C - 1980 - Rebuilt
Transmission, Very Good
U/C, Nice Machine.
\$18,500



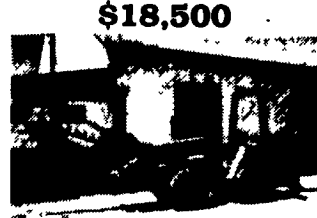
1985 JCB 1550 Extindahoe,
ROPS, Runs Good.
\$12,500



Mini Giant N150-2 Mini Exca-
vator, Diesel, Low Hours,
Runs Good.
\$8,900



Cat V60B Forklift, Diesel,
Sideshift, 6000 Lb., Air
Tires, Runs Very Good.
\$10,500



1979 Case DH4 Trencher
With Hoe, Diesel, Hydrosta-
tic, New Paint, Runs Good.
\$7,900



Miller 14' Offset Disc, Good
Condition.
\$3,900

WANTED: Good Late Model Construction Equipment Need S/N And Price When You Call

HOW YOU CAN GET UP TO 15% MORE IN THE BAG WITH THE KELLY RYAN SELF-CLEANING CENTERLINE BAGGER



- Pack more punch from the center with less h.p. for tighter and more uniform bags of feed
- 7, 8' & 9' diameters 2 wh standard (up to 12 by special order)
- 1/2" cables, 150' and 200'
- No hydraulics. Rust-free, chrome disc mechanical brake
- Tongue centered for close bag spacing and road travel
- Oil bath gearbox & drive chain
- #180 roller chain main rotor drive
- Gearbox 540 or 1000 rpm PTO
- Safety-first, V-belt driven conveyor for airtight feeding
- Design permits bagging nearly twice as fast as other models
- Adapts quickly for road transport
- Frontload dump hopper available
- 6' Rotor 3-4' above ground
- Many more desirable features

UP NORTH SILAGE BAGS 9 MIL

CUSTOM BAGGING - All Items USA made.

AG PRODUCTS CO., INC.



717/328-3177

Dependable farm equipment since 1945

TRUCKS/CARS

- 1972 Ford F600 Dump - Gas \$3,900
- 1988 Honda Accord LX - 4 Dr. - 5 Spd..... \$5,990
- 1988 Honda Accord LXI - 4 Dr. - 5 Spd..... \$5,990
- 1984 Chevy Conv. Van \$8,950
- 1989 Honda Accord LX - 4 Dr. - Auto \$7,450
- 1989 Honda Accord LXI - 4 Dr. - 5 Spd..... \$7,750
- 1989 Honda Accord LXI - 4 Dr. - 5 Spd..... \$7,950
- 1990 Acura Legend L Sedan - Auto .. \$11,400
- 1992 Lexus ES300 - Auto - 25K \$22,900
- 1993 Suburban - Clean..... \$25,500

MISCELLANEOUS CONSTRUCTION

- (50) New & Used Hoe Buckets..... **COME SEE**
- (50) Loader Buckets..... **COME SEE**
- (50) Set Forklift Forks..... **COME SEE**
- (2) Cinder Spreader - Each..... \$1,000
- Ripper For Crawler..... \$1,000
- 1990 Club Car Golf Cart..... \$1,350
- Tennant 92 Sweeper - Dsl - As Is..... \$1,900
- (2) Air Hammer For Hoe..... Each \$2,250
- Root Rake - 8' - JD 450..... \$2,500
- Root Rake - 9 1/2' - Case W30..... \$2,500
- Root Rake - 8 1/2' - JD 444C..... \$2,500
- Bomag BW75S Roller - Diesel..... \$2,900
- Schramm 160 Air Comp..... \$3,000
- IH 140 w/Power Broom- 1972..... \$3,900
- Miller 14' Offset Disc..... \$3,900
- Asplund 12" Brush Chipper..... \$3,900
- (3) Sheeps Foot Roller..... \$2,900/\$4,500
- Mobark 9" Disc Chipper..... \$4,500
- Essick VR42R Roller - 2 Ton..... \$5,900
- Chipmore 12" Chipper - Dsl..... \$6,900
- Koehring TVR30 Roller - Diesel..... \$6,900
- Euclid R18 Rock Truck - 1956..... \$7,500
- Case DH4 Trencher w/Hoe - Dsl..... \$7,900
- Eager Beaver Disc Chipper - Dsl..... \$7,900
- IR 160 Diesel Compressor - 1990..... \$8,500
- Sicard Snowblower - V8 Gas..... \$8,500
- JD 760 Scraper..... \$8,900
- Galion 503 L Grader - 1972..... \$14,500
- Champion 715 Grader - 1977..... \$14,500
- Bomag BW210 Roller-84" - Diesel..... \$16,500
- Ford 6610 w/Hyd. Arm Mower - 1984 \$19,500
- Euclid R35 Rock Truck - 1967..... \$25,000

LOG SKIDDERS

- Franklin 170 - Grapple - 1980 \$13,500
- Clark Ranger 667 - Grapple - 1972 .. \$13,500
- JD 540B - 1982 - Grapple \$22,500

CRAWLER LOADERS

- JD 350B - ROPS - 1972..... \$8,900
- JD 350B - Ripper - ROPS - 1972..... \$11,500
- Cat 941 - Diesel - 1968..... \$11,500
- Benati 7.16 - ROPS - 1985..... \$14,500
- Fiat FL10C - ROPS - 1981..... \$18,500

TRAILERS

- 1994 5 Ton Tag-A-Long - 6.5x14 - 8x18..... \$1,495
- 1978 3 Axle 11 Ton Tag-A-Long - 8x18..... \$1,900
- 1994 5 Ton Tag-A-Long - 6.5x16..... \$2,095
- 1994 5 Ton Tag-A-Long - 6.5x18..... \$2,195
- 1989 9 Ton Tag-A-Long..... \$2,900
- 1994 6 Ton Tag-A-Long - 8x19..... \$3,350
- 1990 11 Ton Tag-A-Long - 8x20..... \$3,900
- 1994 10 Ton Tag-A-Long..... \$6,500
- 1972 30 Ton Lowboy..... \$6,900
- 1994 10 Ton Tag-A-Long w/Air..... \$7,450
- 1994 20 Ton Tag-A-Long w/Air..... \$10,500

DOZERS

- JD 350C - 6 Way - ROPS - 1979..... \$13,500
- JD 350C - 6 Way - Winch, 1975..... \$13,500
- IH TD8E - 6 Way - 1979..... \$17,500
- Case 850B - 6 Way - ROPS - 1979 \$18,500
- Komatsu D65E - ROPS - 1976..... \$19,500
- Cat D4E - Winch - ROPS - 1983..... \$28,500
- Cat D5B - LGP - Cab - 1980..... \$29,500
- Cat D5B - Winch - ROPS - 1980..... \$34,500

SKID LOADERS

- Backhoe For Bobcat 600..... \$2,900
- Backhoe For Case 1835B..... \$3,900
- Backhoe For Bobcat 743..... \$3,900
- Bobcat 530 - Gas - 1980..... \$6,900
- Bobcat 722 - 1978 - Gas..... \$6,900
- Case 1835B - Diesel - 1985..... \$8,900
- Case 1835B - Diesel - 1987..... \$9,500
- NH 553 - 1990 - Diesel..... \$12,500

BACKHOES/EXCAVATORS

- Hoe Attachments..... From \$2,000
- Ford 1801 - Gas..... \$5,900
- Ford 3400 - Gas..... \$6,900
- Takeuchi TB900 Excavator - 1986..... \$8,900
- (2) Mini Giant N150-2 Excavator. Each \$8,900
- Case 590B - ROPS - Ext. - 1973..... \$9,500
- JD 410 - ROPS - 1973..... \$10,500
- JCB 1550 - ROPS - Ext. - 1985..... \$12,500
- JD 310B - ROPS - 1985..... \$16,500
- JD 310B - Cab - 1985..... \$16,500
- JD 410 - Cab - 1982..... \$16,500
- JD 410B - Cab - 1984..... \$19,500
- JD 510B - Cab - Ext - 1984..... \$22,500
- JD 690B Excavator - 1978..... \$23,500
- Case 690K - Cab - 1987 - 4 In 1..... \$24,500
- JD 410C - 4x4 - Cab - 1987 - Ext..... \$28,500
- JD 510B - 4x4 - Cab - 1985 - Ext..... \$28,500
- JD 690B Excavator - 1980..... \$28,500
- Koehring 6614 Excavator - 1986..... \$32,500

RUBBER TIRE LOADERS

- AC 1400 - Gas - 3 Pt. - PTO - 1966..... \$5,500
- Case W18 - ROPS - 1977..... \$18,500

FORKLIFTS

- Cat V50B - LP Gas - 5000 Lb..... \$7,500
- Case 580 - Gas - 21' - SS - 1967..... \$8,750
- Cat V60B - Diesel - 6000 Lb..... \$10,500
- Cat V80C - LP - Air Tires - 1975..... \$10,500
- JD 482C - Dsl. - 1986 - 21' - SS..... \$21,500