

AMINOTEK®

HERE'S WHAT THEY'RE SAYING



Bedford Dairy Herd Increases 14 lbs. of Milk on AminoTek... Through Summer Heat Wave!!!

The Grubb's were excited when their herd responded to AminoTek with a 17 lb. milk increase this spring. But when their herd responded with another 14 lb. increase when they started to feed an AminoTek based top dress...and during the hottest June on record, they couldn't believe it.

On their July 6 DHIA test, they had 21 of their 38 cows milking over 70 lbs.. Six were over 110 lbs., three over 120 lbs. and one was over 130 lbs..

Ray Grubb and his herdsman, Wendell Guyer, say that "The Master Mix AminoTek feed program has given us a great economical answer to some problems we were having. We have seen a terrific response in milk production, along with improved breeding and overall herd health.

We also appreciate the thorough service we get from Gene Barefoot, our Master Mix District Sales Manager for Bedford and Blair Counties. He works very close with us and we're really pleased."

Mr. and Mrs. Ray Grubb
and Herdsman, Wendell Guyer
New Enterprise, Pennsylvania

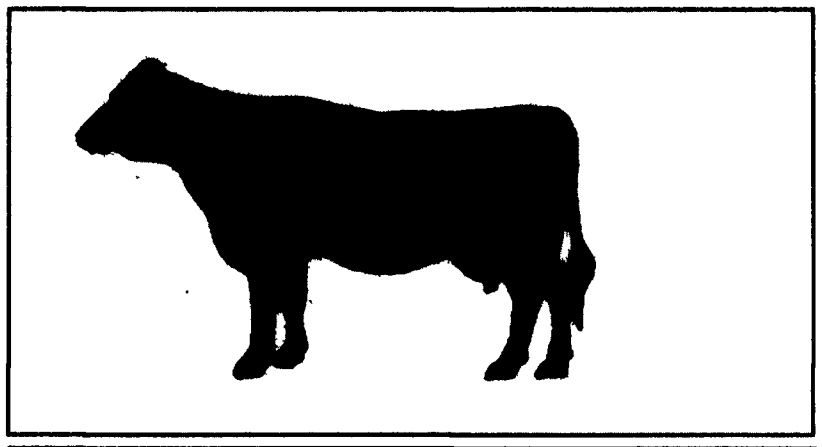
Date	Past Program	Master Mix	
	2/3/94	5/6/94	7/6/94
No. of Lactating Cows	40	40	38
Production/Cow/Day	48	65	79
DIM	132	134	136
% Butterfat	4.1	4.2	3.7
Pounds Butterfat	598	820	1070

TMR Mix

- Alfalfa Haylage
- Corn Silage
- Shelled Cracked Corn
- Bovine III Mineral
- AminoTek TMR Base Concentrate

Top Dress

- AminoTek 36 H.F.
- Megalac
- Shelled Corn



AminoTek Helps Rolling Herd Average Increase 5,000 Pounds In 3 Years

"After 3 years on AminoTek, our herd average has gone from 16,000 lbs. milk to 18,000 lbs. milk to over 21,000 lbs. milk. Our tank average has stayed over 80 lbs.. for over 3 months with no BST! This spring we had one cow peak at 149 lbs.. milk!

I'm well pleased with the Dry Cow Program and the PreLact Pellets. Our herd health and reproduction have gotten alot better since switching from a previous mineral program."

L.S. Nolt
East Earl, Pennsylvania

	Past Program	Master Mix
Date	4/91	5/94
No. of Lactating Cows	24	34
DIM	185	160
Production/Cow/Day	55	80
Rolling Herd Average	16,000	21,300
% Butterfat	3.6	3.6
% Protein	Unknown	3.2

Milk Ration Program

AminoTek 21% Mixer Pellets
with flaked corn

Top Dress
AminoTek 20% Pellets
with flaked soy beans

Forage Program

Corn Silage
Alfalfa Hay

For information on how you can get
AminoTek into your herd, call our
Master Mix sales office in Camp Hill,
at 1-800-477-7692



MIFFLINBURG
FARMERS EXCHANGE
Mifflinburg, PA 17844
(717) 966-1001

ANDOVER MILL
Millington, MD 21651
(800) 245-2305

THURMONT
COOPERATIVE
FARMERS EXCHANGE
Thurmont, MD 21788
(301) 271-7321

SENSING FEED MILL
New Holland, PA 17557
(717) 354-4756

SNIDER'S ELEVATOR
Lemasters, PA 17231
(717) 328-2107

ROSS H. ROHRER
& SONS, INC.
Quarryville, PA 17566
(717) 786-3372

FARMERS
COOPERATIVE
ASSN. INC.
Frederick, MD 21701
(301) 663-3113

BIG VALLEY
FEED & GRAIN
Belleville, PA 17004
(717) 935-2163

HOKE MILLS, INC.
York, PA 17404
(717) 843-8889
Abbotstown, PA 17301
(717) 259-0609

MAUGANSVILLE
FEED SERVICE
Maugansville, MD 21767
(301) 791-5288