

## PUBLIC AUCTION

**VALUABLE REAL ESTATE**  
**1 1/2 STORY 4 BDRM. HOUSE**  
**BARN—2-CAR GAR.—1.38 ACRE TRACT**  
**ANTIQUES — PERSONAL PROPERTY**  
**TRACTOR — GUNS**  
**SAT., SEPT. 10, 1994**  
**9 A.M.**

LOCATION: 651 Grist Mill Rd., Ephrata, Rt. 322 East of Ephrata to Hinkletown light turn left to Martindale turn left on Grist Mill Rd. to property on left, Earl Township.  
**REAL ESTATE** consists of 1 1/2 Story masonry and stucco dwelling with 1st floor eat-in kitchen, living rm., 2 bdrms. & full bath, dining rm./parlor. 2nd floor has 2 full-size bdrms. Full bmt. w/outside entrance. 2-car masonry garage, 2 Story frame barn and fenced pasture. 1.38 ACRE LOT w/mature shade and walnut trees. Terms 10% balance at settlement. For details, brochure, land plotting, etc., Call Auctioneers 733-1006. Inspection By Appointment or Open House — Sat., August 27 & September 3 from 1 to 4 PM Real Estate Sold 2 PM

Terms By:

**Esther C. Martin Estate**

(Mrs. Israel S. Martin)  
 Miles S. Martin, Exec.  
 Loreta S. Shirk, Exec. 717-484-4735  
 Linda Kling, Esquire

Auction Conducted By:  
 Randal V. Kline, Lloyd Kreider  
 Roy E. Good, Jr., Auctioneers  
 Lic. #499L #717-733-1006



KLINE, KREIDER & GOOD

AUCTIONEERS

## LABOR DAY AUCTION

**MONDAY SEPT. 5,**  
**9:00 A.M.**

Located at 796 Hanover Pike on Rt. #194, 1 mi. N.E. Of Littlestown Pa. on the road leading to Hanover.

### ANTIQUES

**OAK:** 2 round tables w/claw feet, dressers, library table, table w/4 chairs, bed & dresser, miniature dresser, office chairs, set of 5 chairs, sewing machine w/case, sleds, rockers. 1930's D.R. suite, bed & dresser. 4 iron cribs, Lg. goldleaf mirror. Twin mahogany beds, wood round top kitchen cabinet, dropleaf table, 5 drawer solid end chest, sm. washstand, cottage bureau w/mirror, 2 dr. cupboard w/drawer, 6 drawer chest w/mirror, beds, cane seat chairs, dining room tables. 2 BEAUTIFUL COOKSTOVES - HAPPYTHOUGHT & ROYAL BRIDE, kerosene, iron gas & tin stoves. Refin. wood barrel, wood sifter, stomper, lg & sm milk cans, 3 sets platform scales, P.O. & hanging scales, child's express wagon, trunks, wooden chest & boxes. 2 BUTCHERING KETTLES, meat bench & grinders, cider press, iron hog troughs, bag carts, corn dryer, seed planter, clover seed & wheat cleaner, straw & potato forks, corn sheller, well pump, wooden vise, horse drawn cultivators, WOOD TOBACCO BAILER, 2 HORSE LAND ROLLER, Wagner, Griswold fry pans, crocks, park bench, wooden model ship; metal trucks, gypsy pots, 2 swords, 400 comic books, old catalogs, quilts, lots of sm antiques etc.

### OFFICE FURNITURE

Dovetailed oak 4 drawer file cabinets, stackable oak & metal bookcases w/glass, 2-4-5-6 drawer file cabinets, 2 door walnut cabinets, approx 25 air vacuum chairs & others like new, 2 door lg. shelf units & other shelving, 4 drawer safes, sets of chairs, lg folding tables, lg library mailboxes, showcases w/ glass doors. Lots Of tool chests w/rollers, desks. All furniture in good condition. Truck load Of furniture not adv. to be sold.

### SHOP TOOLS - LAWN & GARDEN TOOLS

12 HP Hydra static, tractor w/twin bagger, 150 gal gas tank (like new), 2 wheel dump trailer, Toro snowblower, snow blade, sweeper, J.D. mailboxes, rotary mower, pony saddle, elec. chain saws, ban saw w/motor, radial, arm, table, & jigsaws. Wood turning lathe, joiner, air compressor, router, sanders, drills, bits etc. Wood burning stoves, Lg set Of TEXAS BULL HORNS.

### COINS

18 Silver dollars, 19 \$1.00 silver certificates, 13 Kennedy halves, 52 V nickels, 19 Mercury dimes, 1817 lg cent, Barber quarters, wheat head pennies, buffalo nickels. 1847 lg book of stamps, 1944 stamp book & boxes Or old stamps.

### AUTOMOBILES

1961 Ply 4-dr w/40,000 mi, 1963 Corvair 2-dr Coupe w/63,000mi

Terms cash Or approved check  
 Lunch rights reserved.

Owner

**Wanda & Bernard Hartlaub**

Auc. Jim Beaver AU-002390

1 (410)857-9558

Auc. Ralph Schuchart AU-000812 1

## PUBLIC AUCTION

**MONDAY, AUGUST 29, 1994 AT 6:00 P.M.**

**PARADISE SALES BARN, PARADISE PA**  
 Directions: Approximately 8 miles east of Lancaster PA, turn left on Meadow Lane.

### Plumbing Supplies

• 1000's of PVC pipe fittings • Large quantities of PVC pipe from 3/4 in. to 8 in. brass and copper fitting • Brass valves • Misc. irrigation sprinklers etc. • Power pipe threader • Large quantities of rigid pipe threading tools • Other tools • Snap on tools chest • Two rota parts bins • Other shelving & parts bins • One Tractor Trailer load toilets, wash bowls, sinks, shower stalls, etc. All new in boxes • Four storage trailers in movable condition • Approx. 300 partial spools of copper wire

### ADVANCE NOTICE AUCTION

**THURS. SEPTEMBER 15, 1994 AT 10:00 A.M.**

**Large quantities of Tooling, Vises, Cutters, Lathe Heads, Milling Cutters, etc.**

Large buy out of Forklifts, Pallet Jacks, Milling Machines, Lathes, Air Compressors, Shelving, Parts, Approx. 60 Tons of Bolts, Gear Boxes, Pulleys, Bearings, Hyd. Pump, Cylinders, Air Parts and Supplies, Punch Presses, Band Saws and lots more.

### Tractor trailer load of misc. Office Furniture

Above mentioned machines and supplies are in poor to very good condition.

If necessary two auctions will be selling at one time.

For detailed list contact

**M.B. Glick Co.**

2190 Peques Lane, Lancaster, PA 17602

**Auctioneer:** Food Sale By:  
**Mel Hoover** on **Moses B. Glick**  
**AU-003111-L** Premises **Ans Serv: (717)464-5460**

**Sale Terms: Cash or PA Check. Everything sold as is, where is. Auctioneer or Owner not responsible for items advertised that are missing before sale. All announcements beginning of the auction take precedence over any other announcements or advertising. 6% PA Sales Tax will be charged unless exempt.**

## Public Auction Register

Closing Date Monday 5:00 P.M.  
 of each week's publication

FRI. SEPT. 23 - Juniata Co. Farm & Complete Dairy Herd Dispersal. at RR1 Port Royal, Pa. Carl W. & Frances K. Burd, owners. Bryan D. Imes, auct.

Alexander Spring Road. (717) 249-4511.

FRI. SEPT. 23 - 11AM, Dame's Farm Complete Dispersal, 100 Holsteins & Machinery. Located Rexville, (Steuben Co.) New York. Pirrung Aucts., Inc. 716-728-2520.

FRI. SEPT. 23 - 5PM Real estate, antiques, household items & car. Property located approx. 1 mi. from Mifflintown in Licking Creek Valley But sale held at Juniata Markets, Jct. of Rts. 75 & Old 22, 1 mi N of Port Royal Estate of Ruth O. Beale Long's Auction Service.

FRI. SEPT. 23 - 1:30PM, State Graded Feeder Pig Sale. Located At Carlisle Livestock Market, Inc. Exit 12 South Off I-81. Left Onto

FRI. SEPT. 23 - 6PM, Miller Auction Center, Bethel, Pa. Auct. Dwight D. Miller.

FRI. SEPT. 23 - 7PM Disaster Relief heifer auction,

Lebanon Area Fairgrounds, Lebanon, Pa. Harry H. Bachman, auct.

FRI. SEPT. 23 - 5PM & SAT. SEPT. 24 - 9AM Real Estate, household goods, antiques, coins, tools & Winross trucks. Southeast side of Intercourse turn off Rt. 772 S. on Evergreen St. left on Holly Drive to sale at 3635 Holly Dr Leacock Twp, Lanc. Co., Pa. By Gideon S & Elizabeth L. Stoltzfus. Robert E. & Jeffrey R. Martin, aucts.

FRI. SEPT. 23 - 6PM, Valuable Hummel & Paperweight Collection. Located At Springetts Fire Co. Social Hall, 3013 East Market St., York, Pa. Gilbert & Gilbert, Aucts.

SAT. SEPT. 24 - 8:30AM Tractor, gas engine and farm toy consignment sale. Held at Rough & Tumble museum grounds, Kinzers, Pa. Sponsored by Waterloo Boys of Southeast Pa. and International Harvester collectors of Southeast Pa. Chapter #8.

SAT. SEPT. 24 - 8:30AM, Annual Quilt Buggy & Lumber Auction Located At Gordonville Fire Co. Ron Funk & Local Auct.

SAT. SEPT 24 - 8:30AM, Antiques, Household, Butcher Equip., Farm Machinery & Livestock. Located From Carlisle Travel South On Rt. 11 Approx. 6 Miles To Kerrsville Rd. Turn Right, Continue To 381 Kerrsville Rd. Owners, Edgar & Hazel Myers Kevin M. Wickard, Auct

SAT. SEPT 24 - 9AM Anna M Smith Estate, Real estate, JD "M" JD "B" tractors, farm equip, bel-saw machines, antique, household In Hamilton Twp., Adams Co. at 760 Berlin Rd., New Oxford, Pa. From Rt. 30 at Cross Keys, take Rt 94 N. 1 mile, turn left onto Berlin Rd., .2 mile to sale site Dennis J Plunkert, auct.



**MONDAY,**  
**OCTOBER 24, 1994**  
**6:30 P.M.**

**3-UNIT APARTMENT NICE INVESTMENT PROPERTY**  
 LOCATED AT 205 MAPLE STREET, GORDONVILLE, PA.

This large 3-unit apartment has brick walls with vinyl siding, all units have separate electric meters, separate paved parking on both sides, porches, all appliances new within last 2 years, storm windows, well, cable TV, on a large lot approximately 85 X 152 ft., sewer and 30 day leases. Property in good state of repairs. **THIS REAL ESTATE DESERVES YOUR ATTENTION**

COMPLETE DETAILS PHONE AUCTIONEERS

\* RE TERMS: 10% DOWN DAY OF AUCTION, BALANCE WITHIN 45 DAYS.  
 \* TRANSFER TAXES PAID BY BUYER - R.E. TAXES PRORATED.  
 \* ALL STATEMENTS MADE DAY OF AUCTION TAKE PRECEDENCE OVER ALL PREVIOUS ADVERTISING.

OPEN HOUSE MONDAY, SEPT 12 5.00-7.00 P.M. or phone auctioneers

**AUCTIONEERS**  
**APPRAISERS**

OWNER

**Levi A. Esh Jr.**

Ron Funk AU-314-L Gordon Ressler AU-1575-L  
 Paradise, 442-4279 Paradise, 687-7402

\* AUCTION SERVICE SINCE 1961 \*

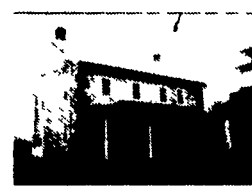
WE want to be your auctioneer!

For free confidential auction estimate call: 717/442-4279 or 687-7402

## PUBLIC AUCTION

OF REAL ESTATE

**SATURDAY, OCTOBER 8, 1994 12:00 Noon**



**3 HOMES, PENNA. GERMAN BANK BARN**  
**AND OUTBUILDINGS ON 9 ACRES**  
**410 SCHAEFFER ROAD, LEBANON, SOUTH LEBANON**  
**TOWNSHIP, LEBANON COUNTY, PA.**

**REAL ESTATE:** Consists of an original 19th Century limestone farmhouse with Sandstone corners, First floor has kitchen, dining rm. with fine early built in Dutch corner cupboard and living room. The second floor has 4 bedrooms and new bath, random width wood floors, oil heat, new windows.

**HOME #2 -** Consists of a 1 1/2 story sandstone home with dinner bell, 3 rooms and bath, fireplace, hardwood floors, oil heat.

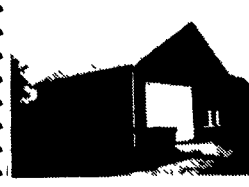
**HOME #3 -** 2 1/2 story frame home with 2 bedrooms, kitchen, living room and bath, coal heat.

**PENNA. GERMAN BANK BARN -** The upper level has 3 drive in bays and 2 hay mows. The lower level has 2 horse box stalls and 2 standing stalls and large cattle loose housing area for steers or heifers.

**HEATED 4 CAR GARAGE -** Block walls, cement floor, oil warm air furnace. **DRIVE THROUGH CORN BARN, IMPLEMENT STORAGE SHED, SANDSTONE SMOKE HOUSE, BUTCHER HOUSE -** With its own rest room & septic.

9 acres with stream and beautiful high producing limestone soil, liberal industrial zoning. Convenient location, great Potential.

**INSPECTION:** Open house, Sunday, September 11, 1994 from 2-4 PM, other times by calling auctioneer.



**DIRECTIONS:** Go 4 miles south of Lebanon on State Drive to Rt. 419 (The property is 1/2 block east of the intersection of Rt. 419 and State Drive) See auction sign.

**CONDITIONS BY: Kenneth & Shelia Fair**  
 Attorney: Loren Schrum, Esquire

AUCTION CONDUCTED BY:

**NELSON L. EBERSOLE, AUCTIONEER**

License # AU-001307-L

PHONE (717) 867-5221 FAX (717) 867-5606

30 WEST MAIN STREET, ANNVILLE, PA 17003