



RECONDITIONED COMBINES

**JD Financing Available - Interest Free Till Jan. 1, 1995
Or Low Rate Financing**

NEW JD 9500.....	In Stock
JD 9500, like new, low hrs.	
'85 JD 6620 Sidehill Titan II, excellent.....	\$46,500
'84 JD 6620 Sidehill, excellent.....	\$38,000
'75 JD 7700, 2,900 hrs., good.....	\$15,000
'78 JD 6600 Sidehill, good.....	\$18,500
'79 JD 4400, dsl., 2,163 hrs., air, good.....	\$16,500 \$15,500
'74 JD 4400, dsl., 2,025 hrs., good.....	\$12,500
'73 JD 4400, gas, good.....	\$ 7,500
Gleaner L, good w/platform.....	\$ 8,000 \$ 7,000
Gleaner K, good w/platform.....	\$ 4,500 \$ 4,000
NI 329 Sheller.....	\$ 2,500
NI 324 2 row picker.....	\$ 2,800
NI mounted picker.....	\$ 1,000

COMBINE HEADS

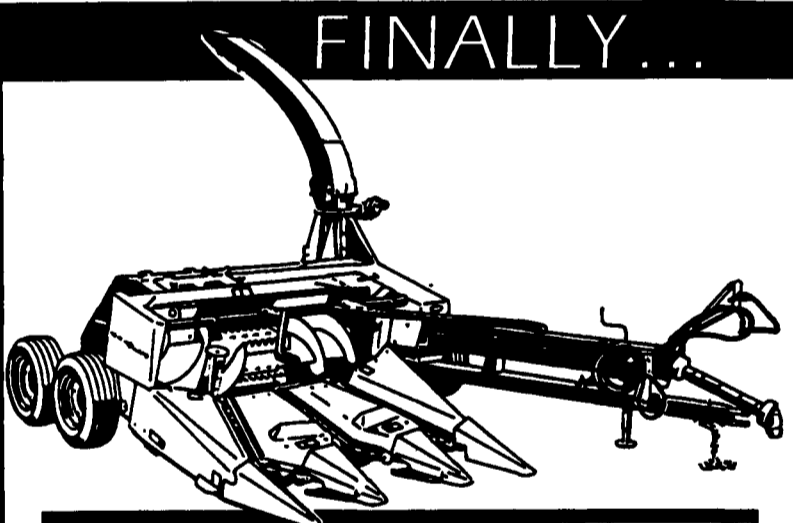
MF & AC Cornheads 4R & 6R	
NI 843N 3 row snapper head	
JD 244 corn head, good.....	\$ 1,800
JD 920 flex platform.....	Coming In
JD 643 corn head.....	Just In

NI 868 Harvester, grass head, 774N corn head, excellent condition for Uni System..... ~~\$12,000~~ \$11,000

1-800-241-2161

LOST CREEK IMPLEMENT

Rt. 35 Oakland Mills, PA 17076
Between Mifflintown & McAlisterville
717-463-2161



FINALLY...

YOU'RE IN CONTROL

The Model 900 forage harvester puts you in control of your harvest:

- Rugged 21-inch, 12-knife cutterhead for a uniform chop.
- Exclusive flip-up feedrolls provide convenient access to the shearbar and smooth roll scraper.
- Electromagnetic clutches provide instant response in controlling feedroll and attachment drives.
- Optional Metalert® 11 metal detector protects cutterhead and your valuable animals.

Let us show you how the Model 900 puts you in control.



QUALITY USED EQUIPMENT FOR SALE

- | | |
|---|-------------------------------------|
| • NH 1495 Haybine, Diesel Engine, Hydro, cab, Air Cond. | • IH 700 Plow Auto Reset Semi-Mount |
| • (2) NH 489 Haybines | • NH 488 Haybine |
| • NH 358 Grinder Mixer w/Hydraulic Drive & Scale | • NI 7 Ft. Cut-Ditioner |
| • NH 311 Baler w/75 Kicker | • Hesston PT7 Mower Conditioner |
| | • NH 315 Baler w/Thrower |

BHM FARM & LAWN EQUIP

**Madey Farms
Windber, PA (814)467-8839**



MF 2775 C/A,
181 HP, 24 Spd.,
\$10,800

IH 5488 C/A, 187 HP, New
20 Bx38 Rubber, 2800 Hrs.
\$23,500

Take Trade. Financing Available

- IH 1466 C/A, rebuilt eng, dual PTO, TA 20.8 radials
- IH 1066 Cab & Air, rebuilt engine, nice..... \$10,800
- Case 2590 w/Cab & rebuilt Engine..... \$16,500
- Case 2290 Cab, Air..... \$12,900
- Case 1070 fender tractor..... Coming In
- Case 1030 diesel..... \$4,800
- JD snow blower, front mount 5 1/2 ft, like new
- Mustang skid loader, 32 hp, Deutz diesel

KEITER'S FARM MACHINERY

Hallifax, PA 17032
(25 miles North of HBG)
717-362-9096

HAY EQUIP.

- JD 3800 harvester
- Ford 3pt. belt driven mower
- NH 54A bale thrower, very nice
- NH 477, 7' haybine, nice
- NH 495, 12' haybine, rolls like new
- JD 24T baler w/chute, field ready
- IH 1190 haybine

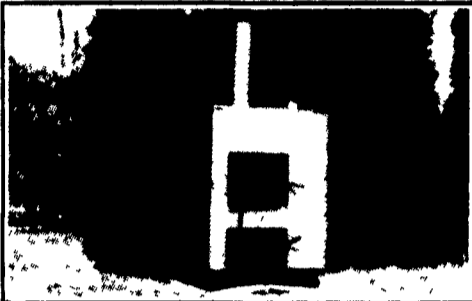
MISC.

- NH 771 1R corn head
- NH 36' elevator
- IH #10, 7x16 grain drill, DD w/grass
- IH 510, 3x16 semi-mount plow, field ready
- JD FBB, 7x15, SD grain drill w/grass
- JD 2NR corn head
- NH 155 30' elevator
- Gehl 99 forage blower for parts
- IH 56 forage blower for parts
- JD 2RW corn head w/slip clutch, good \$650
- IH 1150 grinder mixer, nice

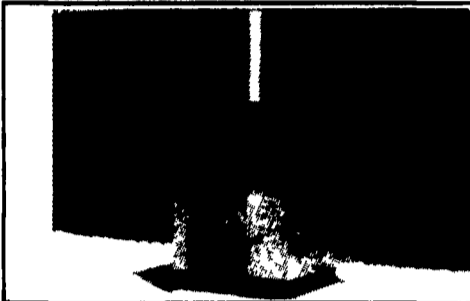
CALL FOR A LISTING OF AVAILABLE EQUIPMENT FOR FARMING

MAHONING OUTDOOR FURNACES

"The Natural Way to Heat Your Home"



Efficiency Rating 83% to 85% - Cut Emissions by 90%
3 Year Warranty Except Electrical Components (1 Year) — 35 Years Heating Experience



Cut Your Heating Costs With Our Outdoor Furnace!
PROUDLY BUILT IN CLEARFIELD COUNTY, PENNSYLVANIA

FUEL USED IN STANDARD UNIT:	SIX SIZES:
WOOD & COAL & WOOD BY-PRODUCTS (SAWDUST, PAPER, ETC.)	Model 100Sboth supply up to 100,000 BTU's per hour
FUEL USED IN MULTI-FUEL MODEL:	100MF 24 inch long fire box
SAME AS ABOVE	Model 200Sboth supply up to 200,000 BTU's per hour
INCLUDING OIL, PROPANE, NATURAL GAS	200MF 36 inch long fire box
	Model 300Sboth supply up to 300,000 BTU's per hour
	300MF 48 inch long fire box
	Model 400Sboth supply up to 400,000 BTU's per hour
	400MF 60 inch long fire box
	Model 500Sboth supply up to 500,000 BTU's per hour
	500MF 60 inch long fire box
	Model 1-millionSboth supply up to 1,000,000 BTU's per hour
	1-millionMF 60 inch long fire boxes

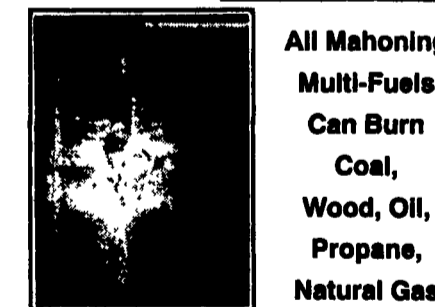
TODAY'S MAHONING OUTDOOR FURNACE WILL HEAT YOUR HOME, BARN, POOL, BUSINESS, GREENHOUSE, & DOMESTIC DRINKING WATER TOO!
WE CAN CUSTOMIZE A UNIT TO FIT YOUR PERSONAL NEEDS!

- Safe • Efficient • Durable
- Look at what makes the Mahoning Outdoor Furnace a great purchase...
CLEAN.All dirt, dust, fuel and fire is outside No chance of chimney fire or flue fire.
- ELIMINATES AIR POLLUTION IN THE HOME.**Smoke, fuel odors and other causes of allergies are outside the home
- SAFE FOR MOBILE HOMES.**Eliminates danger that other furnaces contained in a mobile home can cause.
- NO DANGER OR EXPLOSION.**This is a zero pressure furnace.
- ENCLOSED COMPONENTS.**The circulation pumps and electrical connections are enclosed in an insulated cabinet on the back of the Mahoning Outdoor Furnace.
- ADAPTABLE.**Install our furnace in any forced air heating or hot water system

All Mahoning Units Come Installed with Grates Including An External Shaker Handle

- ★ **The only outdoor furnace made with a Catalytic Combustor. ★**
- Mahoning Catalytic Combustor Will Help In the Following Ways:

 1. Burn one cord of wood which equals 166 gallons of oil.
 2. Your fuel source becomes enormous inexhaustible and poses few risks to public safety.
 3. Over all efficiency of 85%, which means the heat no longer goes up the chimney!
 4. You get more heat from a log compared to the non-cat furnace.
 5. More burn time - less reloading time!
 6. Zap 90% of pollutants, made from fire source.
 7. Saves you a lot of money!
 8. User friendly, emits no smoke!



Proudly Built in Clearfield County, Pennsylvania
MAHONING MANUFACTURING
Mahoning Outdoor Furnace Co.
RD 1, Box 250, Mahaffey, PA 15757
(814) 277-6675 - (814) 277-6675 Dealer Inquiries Welcome
- Call Your Local Dealer Today and Find Out How Mahoning Can Save You Dollars.-

Signor Bros Arnot, PA 717-636-2985	Douglas Finkel, Jr. Gettysburg, PA 717-334-2475	William Stahl Loyville, PA 17047 717-789-3244	Tim Stairs Somerset, PA 15501 814-443-4196
Stan Wensel Barre, PA 16615 814-669-4558	Dave Saunders Gillett, PA 16925 717-596-2353 New York Distributor	Whitney Plumbing & Heating Lucinda, PA 16235 814-226-4389	Merrill Stairs Three Springs, PA 17264 814-443-3647
Gary Schoenly Birdsboro, PA 610-689-6238	Roger Hartle Grove City, PA 16127 412-456-8645	McNamara Heating Meadville, PA 16335 814-724-6718	Tony Liller Cumberland, MD 21502 301-777-9686
Sleepyhead Power Equipment Brookville, PA 15825 814-849-3200	Kevin Hoffman Hadley, PA 16130 814-786-9362	George Duncan Millville, PA 17846 717-458-4837	Mark Nofs Berryville, VA 22611 703-956-2744
James Deitch Carlisle, PA 714-486-3806	Corle Heating Imier, PA 16655 814-276-3066	Clyde Alderfer Mt. Pleasant Mills 717-639-8456	Bill Lantz Aurora, West Virginia 26705 304-735-8836
Charles Heating Clearfield, PA 16830 814-765-8833	Vince Salvato Jeffersonville, NY 914-867-6377	Mike Hollenhead Needmore, PA 17238 717-486-4939	Walter Simmons Brandywine, WV 26802 304-249-6206
Clarks Plumbing & Heating Clearville, PA 15535 814-784-5718	Snow Garden Shop (Dean Snow) Karns City, PA 16041 412-446-2766	Henry Kinsinger Oakland, Maryland 21550 301-334-8510	Rodney Strader French Creek, WV 304-924-5884
Odin Tree Farm (Harry Fox) Coudersport, PA 16915 814-647-6764 New York Distributor	Charles Bowman Lebanon, PA 17046 717-273-8332	Dave Scott Orbisonia, PA 17243 814-447-5459	Randy's Repair Service Millcreek, WV 26280 304-336-8086
Gary's Inc. Falls Creek, PA 15840 814-371-4885	Clarks Heating Service Ligonier, PA 15658 412-238-5122	R & B Industries Shippensburg, PA 17254 814-762-3332	Frank Kurcalo Ohio Distributor 1-800-618-HEAT