

NEW EQUIPMENT

818 steel bale throw rack w/walvanized bed.....\$1,175
806 8-ton - 1086, 10-ton w/adjustable tongue and 11Lx15 tires

Also available
tedders • portable bunk feeders • scraper
blades • rotary cutters

New Country Boy 295 220 bu.....\$695
Gravity Boxes 295 w/extension 305 bu....\$875

New JD wide front ends.....\$1,250
New Schwartz HD wide front.....\$750
JD top link.....\$169

New Tractor, implement, combine replacement
parts, engine kits, rebuilt turbos and clutches,
seats, mufflers, concaves, rasp bars, guards,
teeth, bearings, etc.

Used JD 4020 diesel, WF, dual outlets, diff. lock,
new paint & engine rebuilt \$7,900

NEWSWANGER FARM SHOP
KUTZTOWN, PA (610) 683-5970

1988 MF 283 67 HP Perkins
Diesel, 540 PTO, 3 Pt. Hitch,
ROPS, 1000 Hrs. Foam Filled
Front Tires, 18.4-30 Rear Tires w/
Calcium, Front Weights, 8 Forward
8 Reverse, 2 Remote Hydraulic
Valves.

1988 Rousseau 470 SE Hydraulic
Arm Mower, Flail Head, 2 Rotors, 1
Never Used, 16' Reach, Self-
Contained 3 Pt. Hitch Unit, PTO
Operated. 200 Hours, Cutting Ca-
pacity 6" Diameter \$8000 For Each
Or \$1500 For Pair.

(410) 755-6019

**FARM
EQUIPMENT**

NEW FLAIL CHOPPER

**HEAVY
DUTY**

- 1, 2 and 3 row models • Hydraulic cylinders
- PTO or engine mounted
- Chain or clevis type hangers

10% DISCOUNT

On all orders paid
by August 30, 1994

2 row model
starting at \$1,900



Write or Call:
SUMMIT HILL WELDING
94 Summit Hill Dr., Strasburg, PA 17579 • 717-687-8266
8:00-8:15 AM

J & F EQUIPMENT

(717) 859-3283

No Reasonable Offer Refused
Custom Repairs On All Makes Industrial & Farm Equipment



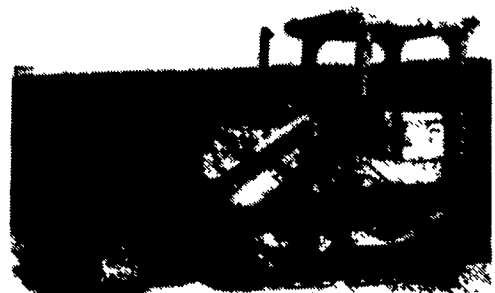
JD 510 \$7,500



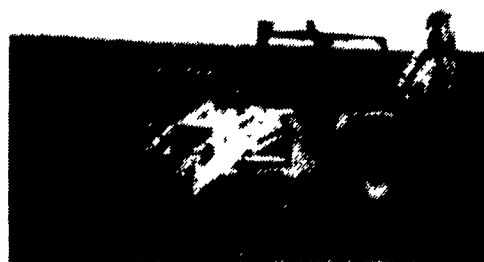
JD 350C 6-Way Blade \$11,500

WE ARE BUYERS FOR CONSTRUCTION EQUIPMENT NEEDING REPAIRS

- JD 350 or 450 ripper, good condition.....\$1,000
- JD 350 Crawler Loader.....\$8,000
- JD 350C Crawler Loader, good condition.....\$13,000
- '84 JD 455D, New Tracks.....\$18,500
- JD 9300 Backhoe Attachment.....\$3,200
- JD 9300 Backhoe Attachment.....\$2,800

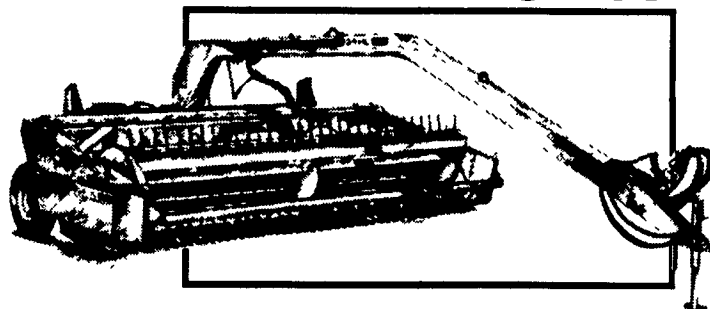


CA941B New Pin and Bushing
Sprockets \$12,500



'86 JCB 1400B Extend-A-Hoe
\$14,000

**END OF SEASON CLEARANCE
CUT 'N TURN**



- Gehl's swing-frame mower conditioners feature:
- Full-width conditioning rolls with intermittent ribs.
- Total hydraulic drive for smooth operation.
- Center-pivot design for excellent maneuverability
- Three-point flotation support protects the cutterbar.
- Easily adjustable for full-width swaths or high-standing windrows

Model 2240 Mower Conditioner

12 ft. 3 in. cut
in stock - Available for Delivery

CALL US NOW for our best YEAR END PRICE
Cash Rebates, Waiver or Low Rate Financing Available

Gehl
Force
The Force Behind Farming

GEHL

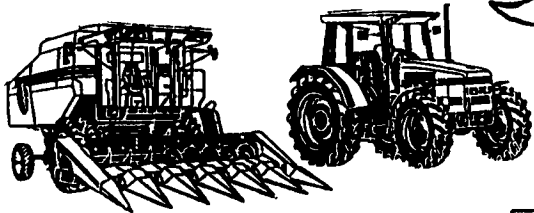
Lebanon Valley Implement Co., Inc.
700 E. Linden Street, Richland, PA 17087
717-866-7518



**AGCO
ALLIS**



**AGCO
ALLIS**



BRANCH

Rts. 309 & 100
New Tripoli, PA
(610) 767-7611
Mon.-Fri. 7:30 AM-5:00 PM
Sat. 7:30 AM-12:30 PM

**NEW IDEA
HESSTON**



* 3 LOCATIONS *
Trumbauersville to Finland Rd.
Quakertown, PA

(215) 536-1935 or 536-7523
Mon.-Fri. 7:30 AM-5:00 PM
6:00 PM-9 PM
Sat.-Parts 7:30 AM-1 PM
Sales 7:30 AM-4 PM



BRANCH

Lobachsville, Oley, PA
(610) 987-6221 or 987-6257
Mon.-Fri. 7:30 AM-5:00 PM
Sat. 7:30 AM-12:30 PM

TRACTORS

- AC 7050D w/Cab, Heat
- AC 7030 D w/Cab
- AC 7010D, PS, Excellent
- AC 6080D w/Roll Bar & Canopy
- AC 190XT D
- AC 180
- AC WD
- JD 60
- White 1855D
- Case 500B
- Ford 2000 w/Snow Plow
- White 4-150, 4WD
- MF 1155D
- MF 285D
- IH 454, excellent

COMBINES

- (1978) AC Gleaner M2 D w/Cab Air, 15' Grain & 630 Corn Heads
- AC Gleaner K w/10' Grain & 238 Corn Heads
- AC Gleaner E w/Cab, 10' Grain And 238 Corn Heads
- JD 6600 D w/Cab & Air, 13' Grain & 630 Corn Heads
- JD 4400 D Combine w/13' Grain And 438 Corn Head
- NI 323 1-Row Picker
- AC 630 Corn Head For N Or R Series Combines
- JD 334 3-Row Corn Head
- (2) JD 235 2-Row Corn Head
- IH 715 w/Cab, 13' Flex Head & 438 Corn Head

TILLAGE

- JD 12' Disc
- AC 2300 15' Disc
- White 253 17' Disc
- Oliver 563 4-B Plow
- (2) JD 5-B Plow
- AC 2000 6-B Plow
- AC 80 3 pt. 4-B Plow
- AC 50 Plow
- MF 3 pt. 4-B Plow
- Ford 5-B Plow
- Ford 4-B Plow

BALERS

- NH 273 w/thrower
- IH 445 w/thrower
- NH 269 w/thrower
- NH 320 wire
- Case 230 w/thrower
- JD 346 wire
- IH 27 w/thrower
- NH 69
- IH 46 w/thrower
- NH 268
- IH 46
- JD 14 w/thrower
- AC 443
- IH 47 w/thrower

FORAGE HARVESTERS

- Gehl 400 w/2 heads
- Gehl 600 w/2 heads
- Gehl 1200 w/2 heads
- NH 717 w/1-row head
- NH 717 w/2-row head
- JD 35 w/2 heads
- IH w/1-row cornhead
- Fox 625 Wagon
- Grove Wagon
- AC 2-row cornhead
- (2) Gehl 99 Blower
- (2) NH 28 Blower
- AC 60 Blower
- JD 65 Blower

HAY TOOLS

- Hesston 1091 Mower Cond.
- Hesston 1090 Mower Cond.
- IH 990 Mower Cond.
- (3) NH 489 Haybine
- NH 38 6' Harvester
- AC 490 Mower Cond.
- NH 460 Haybine
- (2) Hesston PTO 10 Mower Cond
- (3) NH 479 Haybine
- Hesston 1010 8' Mower Cond.
- Hesston 1014 14' Mower Cond.
- JD 1380 14' Mower Cond.
- JD 1209 Mower Cond.
- NH 1495 S.P. Haybine

SEE US AT THE FAIR

West End (Gilbert, PA - Rt. 209), Aug. 29-Sept. 3
Allentown, PA, Aug. 30-Sept. 5
Flemington, NJ, Aug. 30-Sept. 5

