



INTERNATIONAL 6x6 BRIDGE TRANSPORTING STAKE BODY TRUCKS

Front Winch, PS, Air Brake, 1400/20 Tires, 21 ft. Bed with removable steel racks. Continental 6 cyl. engine. LIKE NEW 600-2,500 Miles Excellent for off road heavy duty cargo transporting with their all wheel drive and ability to climb a maximum grade of 70 degrees. Double Frame. A must for every farmer.

\$2,500 to \$10,500
(814) 834-1018 St. Marys, Pa.

• 1979 C70 Chevy lime truck, Stoltzfus lime body, 427 engine, air brakes, MD Inspected. Call between 8 AM and 6 PM (410) 835-8812 (410) 543-9155 Evenings

MOTORS

New & Rebuilt 350, 366, 427, 454
6.2 Diesels Rebuilt & Used
Will Install Roll Back Service (at cost) 717-762-6415

Gooseneck Trailers



| Size | GVW | PA Inspected |
|--------|--------|--------------|
| 20 ft. | 12,000 | New \$3,695 |
| 24 ft. | 14,000 | New \$3,895 |

Features: Flip-Up Beavertail; I-Beam Frame; Stake Pockets & Rub Rails; Adjustable Gooseneck; Electric Brakes On All Wheels; Drop Leg Jack; Loading Ramps; L-23.5x16 Tires.

Ringo Hill Farms Equipment Co., Inc.

1624 Route 212 Pleasant Valley, Quakertown, PA 18951 (610) 346-7340 FAX: (610) 346-8041

CALL OR SEND FOR A FREE CATALOG



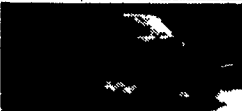
83 General GMC
Detroit V6 91 Engine w/wet line w/Budd wheel \$8,900 OBO
717-529-2512



COCKRELLS AUTO SALES

5270 East Trindle Rd. Mechanicsburg, PA 717-766-4227

TRUCK SPECIALS



90 Ford F250 4x4 XLT
Pick-up Gray & Silver, V8, Auto, AC, Power Windows, Locks, Tilt, Cruise, Cassette, 6 Month/6,000 Mile Warranty \$14,860



83 Ford F350 Crew Cab
Dually, Tan & Cream 400 V-8 84,000 Orig Miles, Centurian Conv \$9,660



90 GMC K1500 4x4 SLE
5 Speed, Power Windows, Locks, Cruise, AC, Cassette, 6 Month/6,000 Mile Warranty \$14,380



90 GMC C-1500 SLE
White, 350 V8, Auto, AC, Power Windows, Locks, Tilt, Cruise & Cassette, 35,000 Miles, 6 Month/6,000 Mile Warranty \$12,980



88 CHEV K-1500 EXT CAB 4x4
Silverado, V8, Auto, AC, Power Windows, Locks, Tilt, Cruise & Cassette, 6 Month/6,000 Mile Warranty \$12,740



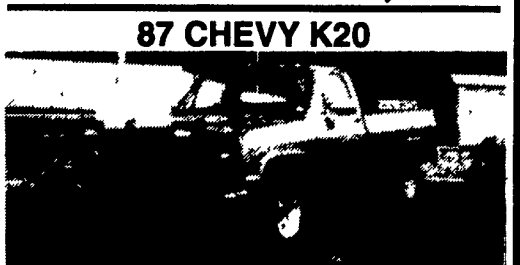
86 CHEV C-10 PICKUP SILVERADO
V8, Auto, AC, Power Windows, Locks, Tilt, Cruise & Cassette, 6 Month/6,000 Mile Warranty \$7,980

OVER 100 CARS & TRUCKS IN STOCK

HARD TO FIND TRUCKS!



82 GMC C7000
18' Box, 23,00 GVW, V-8 5 Speed, New Inspection \$4,600



87 CHEVY K20
8600 GVW, 4x4, w/7 1/2' Snow Plow, 54,000 Miles \$10,990



90 FORD XLT LARIAT
6 Cyl., 5 Speed, AC, Tilt, Cruise, 61,000 Miles \$9,700

"THE TRUCK PEOPLE"
Over 30 Pre-owned Trucks In Stock!
BOYER MOTOR CO.
1065 S. State Street Ephrata, PA 17522
717-738-1885 1-800-788-1835

EXCELLENT WORK TRUCKS



'94 FORD 350 STAKEBODY
Diesel, AT, XL Trim. #4962 Year End Closing Prices



'94 FORD F350 S.C.
4x2 - XLT - DRW Turbo Diesel - Automatic, Loaded. #4958 \$500 Commercial Rebate Avail.

SHEEHY LEBANON

FORD • MERCURY • LINCOLN
9-9 Daily 9-5 Saturday Sheehy Hotline (717) 272-7671 or 533-5293
20TH & CUMBERLAND STS. • RT. 422 WEST

WHY?

...is Your Competition Driving Isuzu Trucks?

Less Down Time & Increased Profits!

Isn't It Time For An Isuzu For Your Business?

1994 ISUZU NPR CAB & CHASSIS

5 speed transmission, diesel engine, 11,050 GVW, Ready for any 10-12 foot body! Much More! #3145



\$18,485
Tax & tags additional.

717-354-4901
New Holland
FORD • ISUZU TRUCK
Rte 23, New Holland, PA

PINE TREE MOTORS

Rt. 322 & Clearview Road, Clay Lancaster Co., PA 717-738-2242

Royal Truck & Equipment, Inc.

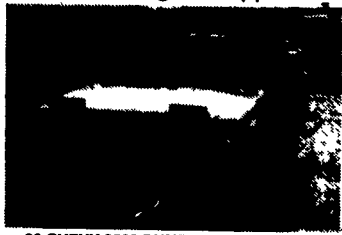
6910 Route 309 Coopersburg, PA 18036

(610) 282-4090
(800) 283-4090

Just Off I-78, Between Allentown & Quakertown Financing Pre-Approved



1986 CHEVY C30 Custom Deluxe Crew Cab
Utility 350-V8, AT, PS, PB, 10,000 G V W 59,000 Miles, Fleet Maintained, Owned & Operated From New



89 CHEVY 3500 DUMP 350 CID 4 Spd PS, PB, GVW West PA Plow Frame Power UP/DN 43,000 miles A REAL WORKER



88 FORD E-350 REEFER VAN 5.0 Liter V-8
AT, PS, PB Carrier Unit "Summer's Here"



1988 CHEVY 1 Ton Crew Cab Pickup
Single Axle, 8' Bed 350-V8, AT, PS, PB, New Blue Paint, Tires & State Insp Very Clean Inside & Out



82-88 IHC 1800 & 1700's 5 Spd., Diesels 14' Slt or Cab & Chassis, 22,500 G V W, No CDL Required, Fleet Maintained, Starting At \$4900 Many To Choose From While They Last



1989 MITSUBISHI FUSO FM 555 CAB OVER 24' MORGAN BOX-2500 lb. Anthony Truck Away liftgate 32,000 GVW-Full Air Brakes 5 SP 80,000

TWO ACRES OF ALL TYPES USED TRUCKS.
"IF WE DON'T HAVE IT, WE'LL GET IT"