

Public Auction Register

Closing Date Monday 5:00 P.M.
of each week's publication

SEPTEMBER

TUES. AUG 30 - 9AM Real estate, antiques, household goods 121 High Street, Manchester, Pa. Estate of Mary L. Good Rentzel's Auction Service.

TUES. AUG. 30 - 12Noon, farm equip., 109 acres & hosue 3 Greentown area farms & farm equip, 6 miles east of Kokomo IN on SR 35 & 22, to CR 700E, then south 1 mile to CR 100S, then east 1 mile to CR 800E, then 1/2 mile S. to the auction. Jim and Jane Sorrell. Schrader Auct. Co.

TUES. AUG. 30 - 4PM, Farm Machinery. Located Donley Rd., Bridgewater, N.Y. Plus 81 Acres w/ Mobile Home & Barns, Also Selling 23.6 Acres, Dye Hill Rd., West Edmeston, NY. Deppoliti Northeast Auction & Realty.

TUES. AUG. 30 - 7PM, 2 Story Dwelling Located At 217 Lancaster Ave., Terre Hill. Open House Sat., Aug. 6th From 1-3 P.M. Terms By, Blue Ball National Bank Horning Aucts.

TUES AUG 30 - 7:30PM Pa Dairy Classic. Herd Dispersal for a Lanc Co. Dairyman, a recent farm accident makes this sale necessary!! Herd has been in existence since 1948, has used the top sires in All The Cattle Exchange

WED AUG. 31 - 10AM Building Materials \$478,000 inventory on premises Millhurst Business Park, Manalapan, NJ NJ Tpke exit 8, Rte 33 E approx 9 miles to Millhurst Rd, make right turn & follow auction arrows Peter Costanzo, aucts.

WED AUG. 31 - 2PM Antiques, household goods, warehouse equip, tools, 1993 Oldsmobile car. Held at the Horst Auction Center, located at the corner of Rt 322 & Durlach Rd. (approx 2 1/2 miles W. of Ephrata), Ephrata, Lanc Co., Pa Horst Aucts

WED. AUG. 31 - 5:30PM Complete dispersal of the late Ed Hagenbuch on farm 3 miles W. of Washingtonville, Pa along Mexico Road, Montour Co Fraley Auction Co.

WED. AUG 31 - 6:30PM 200 year old colonial brick home, 4211 Lincoln Highway East - Rt 462 Between Stony Brook & Hellam) Ronald & Jody Heintzelman Rentzel's Auction Service.

WED AUG 31 & THURS SEPT 3 - 10AM 2 Day Public auction of holstein herd and full line of farm machinery. Located between Bedford, Pa and Cumberland, Md on Rt. 220 at the Village of Centerville in Bedford Co. on the Dwight Kaganise farm. Luce Aucts.

consignment. Belleville Livestock Mkt. 717-935-2146.

FRI. SEPT. 2 - 6PM, Miller Auction Center, Bethel, Pa. Auct. Dwight D. Miller.

FRI. SEPT. 2 - 6:45PM, Farm Machinery & Produce, Glick Farm Dispersal. Located Wayne (Schuyler Co.) New York. Pirrung Aucts. Inc. 716-728-2520.

FRI. SEPT. 2 - 7PM, Horse Sale. Located New Holland Sales Stables Inc., 101 W. Fulton St., New Holland, Pa. Norman Or David Kolb, Aucts.

FRI. SEPT. 2 - 7:30PM Dairy Herd Sale. Located in Franklin Co. off Rt. 30 in St. Thomas at Valley Bank, take St. Thomas-Edenville Rd., 1 1/2 miles to first farm on left. Dale E. and Anna Niswander, owners. Kling's Auctions, Inc.

SAT. SEPT. 3 - 8AM, Williams Grove Historical Steam Engine Assoc. 9th Annual Consignment Sale. Harold Scheib & Terry Scheib.

SAT. SEPT. 3 - 9AM Commercial property in Moore Twp and contents of Hardware Bldg. Supply. 3381 Pheasant Drive, Northampton, PA, Moore Twp, Northampton Co. 4 mi. west of Bath along Rt. 248. By Alle-na nd Ann Edelman. Wil Hahn Auction Co.

SAT. SEPT. 3 - 9AM For Robert W. (Bobby) Lawrence. 1 Mile Northwest of Augustaville, along Houser Rd., 6 miles S. of Sunbury, Pa. Personal Property, guns, farm related items, building supplies. Mark J. Jones, auct.

SAT. SEPT. 3 - 9AM, Household Goods, Tools, Antiques. Located At Main & Mill Sts., Lyons Station, Berks Co., Pa. Ordered By

John Shade & Edwin J. Shade, Executors. Ralph W. Zettlemoyer Auction Co., Inc.

SAT. SEPT. 3 - 9AM, 2-Cylinder Tractor Show. Located Dublin Firehouse Grounds, Rt. 313, Dublin, Pa. Midway Between Doy-lestown & Quakertown. Roy S. Landis Town & Country Realtor.

SAT. SEPT. 3 - 9AM 2 1/2 acres industrial real estate, household goods, tools, farm equip. 2469 Elias Ave., Leb., N. Leb. Twp., Leb. Co. From Rt. 72 N of Ebenezer past Heisey's Diner, left on Heilmendale Rd., left onto Elias Ave. to auction site at end of road. By Robert Meyer, Harry H. Bachman, auct.

SAT. SEPT. 3 - 9AM, Lg. Selection Of Garage Equipment & Tools. Located Mt. Pleasant Mills, Pa. Owner, Anna Haines. Hassinger/ Courtney, Aucts.

BEAUTIFUL FARMETTE AT AUCTION

Sat., October 1, 1994
12:30 P.M.



FOR SALE AT AUCTION WILL BE A 20 ACRE HISTORICAL FARMETTE LOCATED 1.4 MILES EAST OF BEECH CREEK, CLINTON COUNTY. THIS IS ONLY 45 MINUTES FROM STATE COLLEGE & 15 MINUTES FROM LOCK HAVEN. THE BEAUTIFUL 2 STORY MOUNTAIN STONE HOME WAS BUILT IN 1812. IT CONTAINS 4 BEDROOMS, 3 CORNER FIREPLACES, 3 YEAR OLD FURNACE, A NEW ROOF, & A CONCRETE BASEMENT. THE HOME IS HEATED WITH OIL HOT WATER. THIS PROPERTY CONTAINS 2 WELLS & ON SITE SEPTIC AT THE HOUSE. THE NICE BANK BARN ALSO CONTAINS A NEW SEPTIC SYSTEM. ALONG WITH THIS BEAUTIFUL MOUNTAIN STONE HOME AND 20 ACRES ARE 8 OUT BUILDINGS. THESE OUT BUILDINGS INCLUDE A LARGE BANK BARN, MILKHOUSE, GARAGE, & SEVERAL IMPLEMENT BUILDINGS.

HISTORICAL SURVEYS HAVE BEEN DONE TO THIS PROPERTY, AND COPIES HAVE BEEN RETAINED BY THE CLINTON COUNTY PLANNING DEPT., THE CLINTON COUNTY HISTORICAL SOCIETY, & THE ANNIE HALENBAKE ROSS LIBRARY. THIS INFORMATION IS PRIMARILY USED FOR PLANNING PURPOSES AND ENSURES THAT AN ARCHITECTURAL AND HISTORICAL RECORD HAS BEEN MADE OF THE COUNTY'S MOST IMPORTANT HISTORICAL RESOURCES.

There is also the possibility of renting more neighboring land, and owner financing is also a possibility. On Oct. 1, 1994 at 12:30 P.M. you will be awarded the opportunity to own this beautiful Farmette w/ an 1812 Mountain Stone House.

SHOWN BY APPOINTMENT ONLY - CALL RON GILLIGAN 814-237-0189

AUCTIONEERS: RON J. & RON S. GILLIGAN, PA. LICENSED & BONDED #AU339L & #AA2223L.

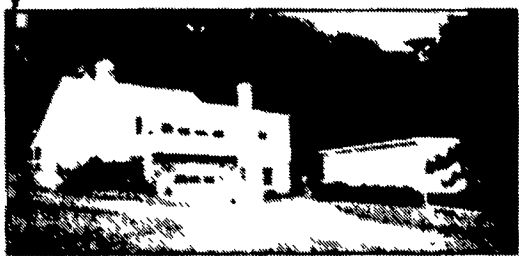
PUBLIC SALE

30 ACRES M/L FARMETTE, REAL ESTATE, FARM EQUIPMENT, HOUSEHOLD GOODS SCHOENECK

TUES., SEPT. 6, 1994 AT 4 P.M.

FARM ITEMS 5 P.M. REAL ESTATE AT 7 P.M.

Located at 225B North King St, Schoeneck, Lancaster Co, PA. (Directions: Rt. 272 N. of Ephrata, turn onto Schoeneck Rd at PP&L Service Center through Schoeneck, turn left at 6th house past Turnpike)



29.17 ACRES FARMETTE (Secluded) TILLABLE ACREAGE & WOODLAND

DWELLING 2 STORY ALUM. SIDED DWELLING w/daylight basement, CENTRAL AIR.

MAIN LEVEL: KITCHEN Jenn-Aire cook top & oven, dishwasher, microwave, DINING AREA, LIVING ROOM w/ fireplace, LARGE MASTER BEDROOM w/walk-in closet, FULL CERAMIC TILE BATH, LARGE LAUNDRY, SUN PORCH.

2nd FLOOR: 2 BEDROOMS w/CLOSETS, full bath. DAYLIGHT BASEMENT, garage w/automatic door, STORAGE AREA, WOOD BURNING STOVE, oil hot water heater & hot air furnace.



2 STORY FRAME BARN & HORSE STABLE

2 STORY FRAME CHICKEN HOUSE, 2 STORY FRAME BARN-STORAGE SHED, 16'x38' POOL (In-Ground).

This fine secluded property has many great features, open fields, woodland, central air, 3 bedrooms, large kitchen, 2 full baths, fireplace, pool, wood burning stove, barn w/horse stable.

Open House: Sat., Aug. 13 & Sat., Aug. 27 from 1 p.m. to 3 p.m. or call 717-336-6363 after 5 p.m.

HOUSEHOLD GOODS CHINA & GLASSWARE FARM EQUIPMENT & TOOLS

JOHN DEERE FARM TRACTOR MODEL 50; Plow; Cultivator, Disc; Harrow; Manure Spreader; Farm Wagon; Farmall Cub Plow & Cultivator; Mountville Sheller; Troughs; Radial Arm Saw, Hand Tools; Wooden Crates; Baskets, Ladders; Traps.

No out of state checks unless accompanied by a current bank letter or prior arrangement with auction service

Terms By:

G. ROGER GEHMAN DOLORES E. GEHMAN

HORST AUCTS.

T. Glenn (717) 859-1331 - (717) 739-3000
Timothy G. (717) 739-2132
Thomas A. "VOICES OF EXPERIENCE"

PUBLIC AUCTION

30 ACRE FARMETTE W/STONE HOUSE J.D. TRACTOR - HOUSEHOLD GOODS - ANTIQUES

MONDAY, SEPTEMBER 5, 1994 9:00 AM

LOCATED: Take Susquehanna Trail North of York to Copenhaffer Road, turn left, go to Mt. Washington Church and turn left on Butter Road to 2nd farm on right. Watch for signs.

12:00 NOON - REAL ESTATE - 12:00 NOON 30 Acre farmette with stone house, barn and equipment shed, approx. 1700' road frontage. The land is in full cultivation in Conewago Township, zoned Agricultural. House has large country kitchen, living room, setting room, full bath and closed-in rear porch. 4 Bedrooms on the 2nd floor. Signed in Clean & Green, very nice setting, only minutes from Interstate 83.

SHOWN BY APPOINTMENT PHONE 764-6412

TERMS: 10% DOWN, BALANCE IN 60 DAYS.

9:00 AM - PERSONAL PROPERTY - 9:00 AM J.D. MT Tractor w/Plow & Culti. (Purchased New), 1 Row Horse Corn Planter, 1 X Walking Plow, J.D. 999 Corn Planter, Circle Saw, Bolens Riding Tractor, Rotary Mowers, Butcher Kettles & Rings, Cross Cut Saw, Sausage Stuffer, Stirrer, Crocks, Lard Cans, Milk Can, Wooden Adv. Boxes, Butcher Ladles, Egg Baskets, Humpty Dumpty Egg Crate, Glass Butter Churn, Slaw Cutter, Cherry Seeder, Blue & Clear Jars, Meat Grinder, Meat Saw, Grind Stone, Pipe Vise, 2 Drag Discs, New Idea Hay Rake, Pipe Threader, Lantern, Electric Drill, Wooden Door w/Wooden Hinges, Lumber, Hand Tools & Hardware, 6' Dearborne Mower, Planter Jr. Garden Tractor, J.D. 6' 3 pt. Rotary Mower, 3 pt. Carry-all, 3 pt. Ground Scoop, Wagon, Massey Harris Semi Mtd. Mower, Bag Truck, Furr Plow, Block & Fall, Long Handle Farm Tools, Wooden Pulley, Scalding Trough, Harvest Handler Elevator, Pump Trough, Bone Grinder, 1 Hole Corn Sheller, Sled, Chicken Feeders, Wooden Barrel, Tractor Tire Chains. Rayo Lamp, Rockers, Cane Chairs, Camel & Flat Top Trunks, Victrola, Victorian Parlor Suite, Wooden Folding High Chair, Wood Box, 2 Pottery Milk Bottles, Graniteware, Wash Boiler, Treadle Sewing Machine, Maytag Washer & Electric Dryer, Waterfall Bedroom Suite, Wash Stands, Dresser Set, Sterling Flatware, Blonde Bedroom Suite, Dresser Lamps, Dressers, Chest of Drawers, Figurines, Fans, Pots & Pans, Kettles, Bench, Perfection Heater, Tin Toys, Doll, Flat Iron, Wash Board, Cookie Cutter, Old Christmas Decorations & Ornaments, Guitar, Living Room Furniture, Philco TV, Stands, Sakura China Set of Dishes, China Closet, Breakfast Set, Guardian Service, Cast Fry Pans & Other Misc. Items.

12:30 PM - CAR - 12:30 PM 1982 DODGE ARIES - 4 DOOR - AUTOMATIC TERMS: CASH OR GOOD CHECK

SELLER: Gladys V. Glassick P.O.A.: Martin L. Glassick

AUCTION CONDUCTED BY: Rentzel's Auction Service - 764-6412 Emigsville, PA PA Lic. #761

TUESDAY EVENING AUCTION

REAL ESTATE, ANTIQUES, FURNITURE, COLLECTIBLES, TOOLS, ETC. OF MRS. MARY E. BRENNEMAN, WIDOW OF THE LATE HENRY BRENNEMAN.

TUESDAY EVENING, AUGUST 23, 1994 - 4:00 P.M.

On the premises at 29 Fulton Ave., Stewartstown, York County, PA. Rt. 24, Main Street 1/2 mi. north from Stewartstown Square to left turn onto Fulton Ave. at the Rutters Store and continue to auction site on right.

REAL ESTATE

A corner lot, 80 ft. frontage by 150 ft. deep. Improved with a 3 BR frame and brick ranch-style dwelling. Oil-fired FWA heat. Fully insulated. New roof. New furnace. A desirable home in a very desirable neighborhood.

INSPECTION: For private showing, phone (717) 993-9424.

TERMS: A down-payment of 10% of the gavel price is required on day of auction. Balance due in-full on or before October 23, 1994 at final settlement.

ANTIQUES, HOUSEWARES, COLLECTIBLES, TOOLS, ETC.

BR suite w/ dbl. bed, dresser, chest of drawers & nightstand; single bed; lg. sq. homebuilt china hutch; birdseye maple washstand; pine drysink; ant. oak dinette table & 4 chairs; decorated egg stove; 1940s table radio; dressing table & wall mirror; baby crib; asst. chairs & lamps; braided rugs; small chest-safe; lg. set Johann Haviland Bavaria china; Gabby Hayes' horse "Cottontail" woodin rocking horse- needs reglued; tealeaf ironstone pcs; lg. agate roasters; two-gallon jug w/ design; Ig. Elgin pocket watch; man's cameo ring; silver dollars - 2 1883s and 20 from 1920s; "National Currency" ten-dollar bills from several different area banks; U.S. Notes and Silver Cert; pattern glass pcs; fleur de lis toothpick holder; Halls bowls; sad irons; nickel teakettle; doll crib; beautiful old postcards; unusual antique cigar box; hand-crocheted bedspread; afghans; and many other items. Table saw; sm. homebuilt air compressor; jigsaw; toolbox; sm. wood lathe; coaster sled; carpenter & mechanic tools; hardware; etc; etc.

TERMS: Cash from strangers and out-of-state buyers; Local checks with acceptable ID.

FAWN GROVE, PA. 717-382-4378
RED LION, PA. 717-741-4488
SECRET Auctioneers

Lic. Nos. 820 & 821

REFRESHMENTS BY RED LION AREA GUILD OF THE MEMORIAL HOSPITAL OF YORK.

PUBLIC AUCTION

OF VALUABLE FURNITURE - ANTIQUES - COLLECTIBLES - DUDLEY POCKETWATCH, ETC. ON: TUESDAY, AUGUST 23, 1994 AT 4 P.M.

At Commonwealth Fire Co. Social Hall, 2045 N. Sherman St., York, Pa. To be sold for Grace A. Myers & Others. INSPECTION: 1 Hr. prior to auction - Air Conditioned Hall. TERMS: Cash or personal check with auctioneer approval.

Brian L. Gilbert, Lic. #2256 - Jacob A. Gilbert, Lic. #336 Auctioneers