

Estimated Daily Livestock Slaughter

Under Federal Inspection
Aug. 17, 1994

	CATTLE	CALVES	HOGS	SHEEP
WEDNESDAY (EST)	123,000	5,000	330,000	18,000
WEEK AGO (EST)	121,000	4,000	347,000	18,000
YEAR AGO (EST)	124,000	4,000	343,000	19,000
WEEK TO DATE (EST)	371,000	13,000	978,000	48,000
SAME PD LT WK (EST)	368,000	14,000	985,000	49,000
SAME PD LT YR (ACT)	368,000	13,000	977,000	56,000

PREVIOUS DAY ESTIMATED TUESDAY STEER AND HEIFER 102,000, COW AND BULL 24,000.

Friend's Stockyard Inc.

Accident, Md. 21520
Report Supplied by Auction
Aug. 15, 1994
STOCK BULLS AND STEERS (200-500 LBS.) 60.00-97.00.
STOCK HEIFERS: 60.00-78.00.
SLAUGHTER STEERS: GOOD TO CHOICE 64.00-67.75, MEDIUM TO GOOD 57.00-63.00, HEAVY CHOICE OVER 1450 LB. 58.00-63.00.
HOLSTEIN STEERS: HEAVY

52.00-57.00, LIGHT 45.00-55.50.
SLAUGHTER HEIFERS: GOOD TO CHOICE 63.00-67.00, MEDIUM TO GOOD 50.00-62.00.
BULLS: HEAVY 55.00-63.75, LIGHT 46.00-61.00.
COWS: FEW HIGH DRESSING UP TO 48.75, UTILITY (HOLSTEIN) 44.00-46.00, COMMERCIAL TO GOOD 39.00-45.00, CULL COWS 38.00 AND DOWN.
VEALS: GOOD TO CHOICE 70.00-100.00, MEDIUM TO GOOD 50.00-69.00.

BOB CALVES: 60.00 AND DOWN.
HOLSTEIN BULL CALVES — RETURN TO FARM (90 TO 120 LB.)-100.00-141.00.
HOLSTEIN HEIFER CALVES — RETURN TO FARM (100 TO 120 LB.)-100.00-192.00.
BEEF CROSS CALVES — RETURN TO FARM UP TO 141.00.
HOGS: TOP QUALITY 42.00-43.35, HEAVY 40.00-43.00, LIGHT 35.00-42.00.
SOWS: 18.00-29.50.
MALB HOGS: 22.00-27.00.
LAMBS: 60.00-71.00; FEEDER LAMBS, NONE AVAILABLE.
SHEEP: UP TO 32.00.
LIVESTOCK PRICES ARE ALL GIVEN PER HUNDRED WEIGHT!

60.00-62.00, Select 55.00-59.75, Standard 50.00-54.75. HEIFERS: Choice 63.00-66.25, Select 55.00-58.75, Standard 50.00-55.00. COWS: Breaking Utility and Commercial 46.00-49.50, Cutter and Boning Utility 43.75-48.75, Canner and Low Cutter 38.00-43.50. Shells 30.00-37.00. BULLOCKS: Select 60.25-62.50. BULLS: Yield Grade No. 1 1100/1910 lbs. 56.00-61.50, No. 2 815/1200 lbs. 50.00-55.50, one 2610 lbs. 50.25. FEEDER CATTLE: Steers: 460/780 lbs. 61.00-76.00, few Holsteins 500/700 lbs. 65.00-73.00; Heifers: 400/775 lbs. 58.00-63.00.
CALVES 236...VEALERS: Standard and Good 60/100 lbs. 35.00-55.00. RETURNED TO FARM: No. 1 Holstein bulls 100/115 lbs. 120.00-147.50, few 152.50, No. 2 80/90 lbs. 65.00-117.50, few 137.50; No. 1 Holstein heifers 90/110 lbs. 175.00-215.00, No. 2 75/80 lbs. 155.00-192.50.
HOGS 586... (08/15 & 08/16/94)..Bulk of supply sold on Monday and reported by the auction. BARROWS AND GILTS: US No. 1 230/250 lbs. 45.00-46.00, 1-2 220/250 lbs. 42.75-44.75, US 1-3 210/260 lbs. 40.50-42.50, US 2-3 240/275 lbs. 38.00-40.50, US 1-3 280/310 lbs. 34.00-38.00. SOWS: US 1-3 325/590 lbs. 28.00-32.00, few 34.00, 300/500 lbs.

25.00-28.00. BOARS: 210/575 lbs. 24.00-30.00.
FEEDER PIGS 204...US 1-3 20/35 lbs. 15.00-30.00, 35/50 lbs. 32.00-38.00. -- per head.
SHEEP 16...Slaughter Lambs: Choice 80/100 lbs. 72.00-75.00, one 77.00. Slaughter sheep: 28.00-36.00.
GOATS 22...Large 75.00-122.50, Medium 40.00-65.00, Small 20.00-37.50. -- per head.

Marshall, Virginia Horse Sale

Report Supplied by Auction
July 13, 1994

182 HEAD.
RIDING HORSES, SERVICEABLE AGE: AVERAGE TO GOOD QUALITY 925-1175 LBS. 560.00-790.00; 800-900 LBS. 390.00-570.00; BETTER QUALITY 925-1175 LBS. 800.00-1150.00, 1 AT 1250.00; 800-900 LBS. 620.00-810.00; EXCELLENT QUALITY 1000-1175 LBS. 1270.00-1675.00; 800-900 LBS. 2 AT 1100.00-1280.00.
RIDING PONIES: SMALL 250.00-520.00; LARGE 200.00-600.00.
LOOSE HORSES: AVERAGE TO GOOD FLESH, 925-1175 LBS. 540.00-950.00; 800-900 LBS. FEW 465.00-475.00.

Keister's Middleburg Auction

Middleburg, Pa.
Tuesday, August 16, 1994
Report Supplied by Auction
CATTLE 506.. SUPPLIED BY THE AUCTION. STEERS: High Choice and Prime 68.00-69.50, Choice 65.00-68.75, Select 63.00-64.75. HOLSTEINS: High Choice and Prime 62.00-64.75, Choice

Farmers: Circle August 31!

Visit DEKALB's 90-acre Mid-Atlantic Corn Research Station in Lancaster County, Pennsylvania on Wednesday, August 31. The field day runs from 11 a.m. to 2 p.m.

- Tour this modern corn research station in your backyard
- Compare DEKALB's line-up of leader hybrids
- Review field trials of herbicide resistant hybrids
- Hear about DEKALB's use of biotechnology to improve farming
- Discuss crop management with other farmers
- Enjoy a pig roast luncheon

Directions:

The farm is located southwest of Manheim, PA. Follow Rt. 772 to Colebrook Road, then travel south through Sporting Hill. The farm is about 3/4 mile from town at 423 South Colebrook Road.



Are You Prepared . . .

For the Harvest Season?



At harvest time your farm and equipment need to be operating at full potential. Sudden weather changes, an equipment failure in the field, or delayed supplies can be costly and need an immediate response.



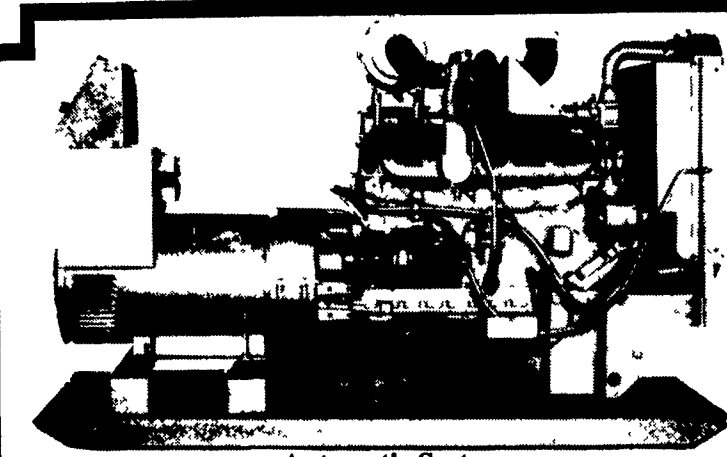
TRIANGLE COMMUNICATIONS INC.
New Holland Reading
(717) 856-2211 (610) 929-4211
1-800-828-7718

More and more farmers are discovering the efficiencies MOTOROLA two-way radio offers. Durable, compact, and clear communications are quickly at your control.

So, don't get caught in your busy season without the farmer's friend TWO-WAY Radio.

REAP YOUR COMMUNICATIONS SAVINGS. NOW.

We Keep Business Talking



Automatic Systems

USED		NEW	
12 KW Diesel	70 KW LP Gas	100 KW Diesel	30 KW LP Gas
45 KW Nat. Gas	100 KW Diesel		

24 HR SERVICE

MAXI-POWER

RADIO DISPATCH

330 Fonderwhite Rd. Lebanon, PA 17042
717-273-4544 1-800-272-MAXI

SAFE - FENCE

Poly-Stainless Steel Web Electric Fencing
"The Safest Most Effective Livestock Fence Available"



- Highly Visible • Easy To Install
- Easier To Maintain

Safety & Strength:

At 700 pound breaking strength, Safe-Fence is stronger than wood and most wire products. The high visibility reduces the potential for accidents and since 1982 there has not been one single reported injury.

Appearance and Price:

Safe-Fence offers a practical alternative combining electricity, good looks, low injury potential, easy installation and maintenance at a price three times less than wood and not much more than high tensile wire.

Low Maintenance:

If a person can lift 24 pounds, swing a hammer and turn a small wrench they can install Safe-Fence on any fence post. Considering the most severe accidents or weather, damage is seldom more than a broken insulator or stretched webbing, which can be easily retightened at the tensioner. If the webbing is ever torn it is quickly repaired with the stainless steel splicer.

Now Available At...

HUBER'S ANIMAL HEALTH SUPPLIES

810 Tulpehocken Rd., Myerstown, PA

717-866-2246

Hours: Mon., Thurs., Fri. - 7:30 to 8
Tues. & Wed. 7:30 to 5; Sat. 7:30 to Noon