

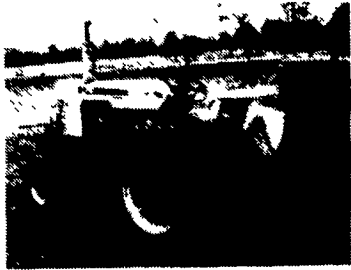
AG INDUSTRIAL INC.

Route 1 on MD PA LINE

410-658-5568 610-869-3549



1979 450B Case Crawler Loader, Pins & Bushings Excellent, New Sprockets, Clean Machine



Sharp 40 HP Case 530 Tractor, Cat 1 3 PT, Hitch, 540 PTO, Good Rubber, New Clutch

TRACTORS & LOADERS

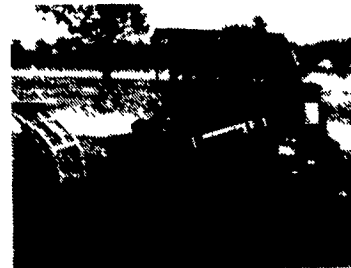
Deutz DX 120 Tractor
Ford 5610 w/Highway Mowers
Ford 1715 Compact Trac
Kubota G5200
Toyota 35DK4 Skid Ldr.
JCB 3CX Trac/Ldr. Bckhoe
Case 450B Ldr.
Case 530 Trac
Case 411B Trac

MISCELLANEOUS

Kvermland 7550 Sila Wrap Wrapper
Brillion 16 ft. Cultipacker
Int. 14 ft. Disc
IH Farm Truck
NH 519 Spreader



Clean 320 Baler w/70 Thrower, Hydraulic Directional on Thrower, Field Ready



Small Frame Toyota Skid Loader w/36" Bucket Yanmar Diesel, 3 Cylinder Engine, Runs Smooth, Real Workhorse

HAY & FORAGE

(2) NH 320 Baler w/58 Th
NH 425 Baler
Kuhn GRS-25N Tedder/Rake
Deutz KH500 Tedder
NH 488 Haybine
NH 489 Haybine
JD 1209 Haybine
BH 105 Mower
Vicon 321 Disc Mower
NH 411 Disc Mower
CTL Mower
NH 770 Chopper
NH Round Baler
NH 469 Haybine
NH 488 Haybine
Hesston 1014 Hydroswing Haybine
JD 1219 Haybine

EDWIN HORNING & SONS FARM MACHINERY

248 Meadow Valley Road, Ephrata, PA 17522



(717) 733-7408

FAX 738-4897

TRACTORS

JD 2630 Indpt. PTO\$8,500
IH 756 diesel, TA, 3 pt, 2 shafts.....\$6,800

CORN PICKER

NI 323 1 R steel rolls.....\$1,950
NI 324 2 RW 12 roll bed (late model).....\$3,000

TILLAGE EQUIPMENT

IH 720 plow 4x18 spring reset.....\$2,750
IH 710 plow 4x16 spring reset.....\$1,850
Brillion 14' packer side transport.....\$1,450
Case IH #14 V ripper 5 shank w/coulters, depth wheels.....\$3,950
IH 510 drill 1 ~~SOLD~~ ass attach. d.d.....\$1,950
JD 8300 drill 21x7 grass attach, d.d....\$2,650
IH 45 field cult., pull type 17', hyd. fold \$1,450
IH 45 field cult., pull type, 13'.....\$1,200
White 508 plow, 4x18 cushion trip.....\$1,050
JD #1450 plow, 4x16 trip.....\$950
JD 8300 drill, 18x7.....\$2,250
JD 8200 drill, 18x7 single disc grass/attach.....\$1,150
White 252 disc, 9', nice.....\$1,850
IH 510 drill, 16x7, single disc.....\$1,050
IH 56 4R corn planter w/dry fert....\$650-\$850
JD 494A planter 4RN, dry fert.....\$350
JD 8300 drill, 21x7 DD, grass attach.....\$2,950
Rhino 7T chisle plow, 3 pt.....\$675
JD 2700 plow, 5b, variable width, spring reset.....\$2,950
JD 535 trailer sprayer, 30' booms, 350 gal. tank, nice.....\$1500
Oliver 252 disc, 12'.....\$975
AC field cultivator, pull type, 11'.....\$1,050
IH 450 plow, 3x16 spring reset, 3 pt.....\$1,650
IH 56 corn planter, 2R, DD.....\$800
Brillion packer seeder 10', nice.....\$2,700
IH 720 plow, 5x16 spring reset.....\$2,500
IH 56 planter 4R, late model.....\$900

MISCELLANEOUS

NH #75 bale thrower.....\$550
NH 304 side delivery manure spreader.....\$2,250
NH 354 grinde ~~SOLD~~, hyd. drive w/scales.....\$3,500
(4) no till coulters for White 5100 corn planter.....\$450
Gehl 95 mix ~~SOLD~~ drive.....\$1,200

HAY EQUIPMENT

JD 1600 Hydra Swing, 12 Ft. Mo. Cond., Nice.....\$8,900
FNH144 Hay Invertor.....\$1,950

NH 853 round baler bale command.....\$6,200
NH 451 si ~~SOLD~~wer 9' bar.....\$950
NH 455 trailer sickle mower.....\$950
NH 477 haybine 7' nice.....\$2,950
Gehl 260 spin hay rake.....\$1,450
NH 316 baler w/#70 thrower.....\$6,900
NH 474 haybine 7'.....\$3,200
JD 1209 Moco 9'.....\$2,600
NH 311 baler.....\$4,800
NH 315 ~~SOLD~~/chute.....\$2,200
NH 276 baler w/thrower.....\$2,400
Kuhn GRS25 rake/tedder combo.....\$2,200
JD 1217 mower cond.....\$2,500
NH 311 baler w/75 ejector.....\$5,500
NH 477 haybine.....\$2,300
NH 456 trailer mower w/crimper hitch.....\$1,650
NH 402 crimper.....\$950
JD 1219 mower conditioner, (1990).....\$4,850
NH 565 baler w/hyd. belt #72 thrower, very nice.....\$8,200
FNH 489 h ~~SOLD~~.....\$4,200
JD 450 pull type sickle bar mower.....\$1,250
IH 1100 trailer mower, nice.....\$950
NH 455 mower, crimper attach.....\$850
Ford NH 489 haybine.....\$4,900

FORAGE EQUIPMENT

NH 900 Harvester w/Metal Alert, Nice....\$6,700
IH 56 Blower.....\$950
JD 3940 ha ~~SOLD~~. controls w/2 RN cornhd & 5 1/2 p.u.....\$6,850
Gehl 800 ~~SOLD~~ir. sharpener base unit..\$1,800
JD 716A wagon 3 btr roof w/1275 tandem gear.....\$4,500
Gehl 99 blower nice.....\$650
Gehl 1580 blower 1000 rpm.....\$950
Gehl 1060 hav. auto max. tandemaxle w/2 row 30-38 corn head & 1210 7 ft. PU..\$10,500
NH 892 ~~SOLD~~ase unit.....\$3,700
Gehl 91 ~~SOLD~~h 3 btr & roof.....\$1,800
NH 707 ~~SOLD~~ row harv.....\$550
NH 900 harv metalert tandem.....\$7,500
JD 716 3 BTR forage wagon.....\$2,500
JD 716 wagon 3 beater, roof, tandem gear.....\$3,200
NH 782 harvester, base unit, 1000 RPM.....\$3,900
Gehl 1560 blower, late model.....\$2,200
NH direct cut head for 717 to 782 harvester.....\$375
NH 30 ~~SOLD~~.....\$550
NH 28 ~~SOLD~~.....\$850
NH 892 ha ~~SOLD~~.....\$3,850

CORN HARV. HEADS

JD 1R for 38.....\$250
IH 720-830 2R adj. low profile.....\$850
NH 770R2 wide row.....\$500
Gehl 1R low profile for 700.....\$150
Gehl 30-38 2R adj low profiel.....\$1,400
NH 880N2 N.R.....\$600
JD 2R.N. hi hood w/clutch.....\$1,150

Best Buys in Used Equipment

COMBINES & HEADS

1994 Case IH 1644 Axial Flow, w/15' 1020 Head, 330 Hrs.
1994 Case IH 1644 Axial Flow DEMO w/15' 1020 Head, 190 Hours
1992 Case IH 1640 Axial Flow w/15' 1020 Head, 475 Hours
1991 Case IH 1660 Axial Flow w/16 1/4 ' 1020 Head, 1054 Hours
1990 Case IH 1660 Axial Flow w/15' 1020 Head, 1277 Hours
1982 Massey 850 w/18' Head w/U 2 Reel, 3400 Hours

TRACTORS

Case 830 Gas Tractor Case-~~SOLD~~ Transmission

MISCELLANEOUS

IH 468 Seed Bed Conditioner, 12'6"
White 252 Disc Harrow w/Dual Wheels, 13'10"
Set Of Dual Wheels & Tires, 20.8x38, Fair Condition
Moore Rain Irrigation Pipe, 5"x40' w/Couplings, Tees, Elbows, & Plugs
White 2-44 FL Forklift
IH 485, 19' Hyd. Fold Disc Harrow
JD 7b On-Land Plow
Case IH 5717 Chisel Plow, 17'
Lely- Roterra, 8'
IH 4 Bottom Rollover Plow, 16"
Farm-Hand Dump Wagon
Ford Chisel Plow, 10'
White 6b Semi-Mounted Plow
Unverferth Header Cart
Brittania Boom Sprayer

HAY & FORAGE

IH 440 Sq. Baler
NH 479 Haybine
Ford Square Baler
NH 271 Square Baler
NH 268 Square Baler
NH 680 Manure Spreader
NH 488 Haybine
NH 1495 Self-Propelled Haybine

Farm-Rite inc.

Agricultural Equipment, Supplies & Services
SHILOH, N.J.

1-800-752-6373

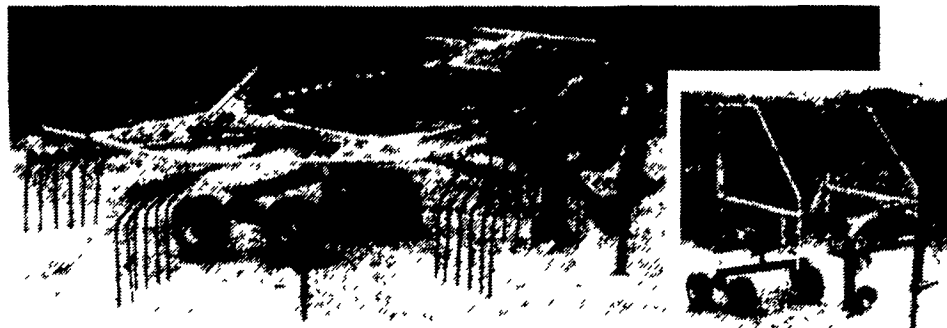


I & J MANUFACTURING



FEATURES: Forms a fluffy windrow without roping. Turns hay upside down. 10 ft. raking width or 12 ft. including windrow. Available in 3 pt. PTO or trailing ground drive or PTO. Lever operates from the cart which raises and lowers the rake also engages or disengages the gear.

OPTIONS: 20" Steel wheels or rubber tires or tandem axle.



Transport Position

I & J MANUFACTURING

Jacob & Alvin Blank • 5302 Amish Road • Gap, PA 17527
717/442-9451 (Please call between 8:45 & 9 AM)