

Kutztown Produce Auction

Fleetwood, PA
 Aug 12-Aug. 18
 Sat. Hay and Straw at 9:00 a.m. followed by produce
 Report Supplied by Auction
 APPLES: 1.50-6.50 ¼ BU., 3.00-3.75 BU.
 BEANS: GREEN 2.50-14.00 ¼ BU., .50-4.50 BU., YELLOW 4.00-14.00 ¼ BU., 6.00 BU.; LIMA 8.00-18.00 ¼ BU.
 BEETS: .30 BUNCH, CUT 4.00-6.00 ¼ BU.
 BLACKBERRIES: .75-1.20 ¼ PINT, 1.10-1.40 PINT.
 BROCCOLI: 4.50 BU.
 CABBAGE: .55-70 HEAD, 3.50-8.00 BAG.
 CANTALOPES: .05-.95 EACH.
 CHERRIES: GROUND 6.50 FLAT.
 CUCUMBERS: 1.50-6.25 ¼ BU., 2.50-8.00 BU.
 EGGPLANT: 1.30-9.00 ¼ BU., 2.75-10.00 BU.
 EGGS: 40-90 DOZ.
 ELDERBERRIES: 3.00 ¼ BU.
 GARLIC: .75-1.80 LB., BRAIDED

4.00.
 HERBS: 2.00-3.25 BUCKET.
 HONEYDEW MELONS: .35-1.90 EA.
 LETTUCE: HEAD 4.00-5.00 BOX.
 NECTARINES: 3.00-16.00 ¼ BU.
 ONIONS: 3.00-6.50 ¼ BU., 11.00 50 LB. BAG.
 PEACHES: 2.00-18.00 ¼ BU.
 PEARS: 1.50-11.00 ¼ BU., 4.00-14.00 BU.
 PEPPERS: 1.00-13.50 ¼ BU., 2.50-9.00 BU.; HOT 2.50-5.50 ¼ BU. AND 3.50-21.00 FLAT.
 PICKLES: 4.50-7.00 ¼ BU., 6.00-12.00 BU.
 PLUMS: 2.00-11.50 ¼ BU., 3.00-13.00 FLAT.
 POTATOES: WHITE 3.50-5.00 ¼ BU., 1.50-4.00 8 QT. FLAT; .50-.65 5 LB.; RED 5 LB. .30-.75; WHITE 50 LB. 6.00; 50-LB RED 1.50-10.00.
 SQUASH: WINTER 2.00-7.00 ¼ BU., 2.50 BU.; YELLOW 2.00-10.50 ¼ BU.
 SWEET CORN: .50-8.00 BAG.
 TOMATOES: .50-16.50 25 LB. BOX; CHERRY 1.00-8.50 12 PINT FLAT; YELLOW 5.50-19.00 ¼ BU.
 WATERMELON: .30-4.50 EACH; YELLOW DOLLS .55-3.00; SEEDLESS .50-3.20 EACH.

ZUCCHINI: GREEN 2.50-11.00 ¼ BU.
 FLOWERS: .65-3.25 POT.
 CUT FLOWERS: 1.00-2.00 BUCKET.
 GLADIOLAS: .10-.40 EACH.
 SHRUBS AND TREES: .50-6.00 EACH.
 MUMS: 1.00 POT.
 AUCTION DAYS WILL BE MONDAY THROUGH FRIDAY AT 9:30 A.M. HAY AND STRAW SATURDAY AT 9 A.M., FOLLOWED BY PRODUCE.

New Jersey Fruit

South New Jersey
 Wednesday, August 17, 1994
 SOUTH NEW JERSEY Sales F.O.B. Shipping Point Basis.
 NON-CITRUS FRUITS ---PEACHES:

DEMAND Moderate. MARKET About Steady. Various Yellow flesh varieties mostly Loring. U.S. ExONE & some no grade mark. Wide range in price. 3/4 buctns 2 1/2" up 14.00-16.00 few 13.00 one brand 20.00 2 1/4-2 1/2" 12.00-14.00 few 11.00 one brand 17.00 2 1/8-2 1/4" 8.00-10.00 one brand 13.00 2-2 1/4" few 4.00-6.00 one brand 7.00.

WE MOVED!
Evergreen Tractor
 41 S. Fairlane Ave. • Myerstown, PA 17067
 717-272-4641 • 717-866-2585 • 1-800-441-4450

To Harrisburg — Rt. 78 & 22 — To Allentown
 Lebanon — Rt. 422 — Evergreen Tractor's New Location — King St. — To Lancaster
 Myerstown
 Layers Flowers

TRACTORS:

JD 3020 G.SOLD Front
 Ford 9N\$2,275
 JD 300 Utility w/Fall Mower\$6,950
 JD 4020 Syncro, Narrow Front, Nice.....\$8,950
 JD 4230 Quad, Year-Round Cab, Fresh Engine.....\$13,700
 JD 7020 Cab SOLD 2, 3 Pt. PTO, Dual Remote\$11,500
 JD 1020 Gas w/37 Loader and Direction Reverser\$7,850
 Hyster Dual Wheel Pneumatic, 6,000 Lb. Fork Lift\$6,250

COMBINES & PICKERS:

White 8900 Combine 4WD w/15" Grain Head and 706N 6 Row Corn Head and Chopper.....\$23,500
 6620 Side Hill, turbo hydro, heater & air, monitor, spreader.
 JD #343 3 Row 30" Corn Head.....\$3,650
 JD 653 6 Row 30" Bean Head\$2,450
 JD 13' Quick Tach Rigid Grain Head.....\$1,850
 JD 444 4 Row Wide Corn Head.....\$3,650
 JD 213 Rigid Head For Side Hill\$2,650
 MF 410 Gas Combine w/Platform And 4 Row Wide, Nice
 JD 4400 Dal. Combine, New Engine
 6600 Straw Spreader..... \$275

HAY & FORAGE EQUIPMENT:

IH 51 Forage Wagon w/Gear.....\$1,650
 JD 1 Row, Row Crop Attachment, Nice.....\$550
 JD 5 ½' Pickup Attachment
 NH 1010 Bale Wagon\$4,350
 NH 268 Baler w/Ejector
 JD #30 Hydraulic Bale Ejector.....\$1,500
 Hesston 1091 Mower Conditioner\$2,950
 Owatonna 320 Stacker.....\$1,550
 NH 495 12' Haybine.....\$4,850
 JD 3 Row Row Crop Atch. 30" For Harvester.....\$4,450
 NH 770 Harvester With 2 Row Wide Corn Head And Pickup.....\$4,450
 IH 430 Baler w/Thrower
 JD 35 Harvester With Pickup
 Wheel Rake.....\$425
 Hesston PT 10 Haybine\$950
 JD 2 Row 30" Row Crop Atch. For Harvester
 JD 3950 Harvester, Sharp
 JD 348 Baler w/#30 Ejector.....\$5,850
 NI 402 Rake.....\$850
 Hesston 1014 12' Hydro Swing Mower Conditioner\$4,250
 Wooden Bale Body w/Gear\$855
 MC Fall Chopper, Like New.....\$1,575
 JD 35 Harvester, 540 PTO w/1 Row Row Crop\$1,550
 Hesston Stack Mover.....\$375
 JD 25A Fall Mower, Nice.....\$1,275
 NH 450 3 Point Mower.....\$950
 9' Grimm Hay Tedder

DISCS AND FIELD CULTIVATORS

Lely 15' Roterra Power Harrow\$3,950
 JD 210 14' Black Gang Disc.....\$3,850
 JD 18' Field Finisher.....\$1,450
 18' Wing Fold Field Cultivator S-Tines.....\$950
 JD 235 27' Wing Fold Disc.....\$6,500
 JD 4 Row RM Cultivator.....\$1,050
 Taylorway 20' Hyd. Fold (narrow) Field Cultivator, Tine Harrow.....\$2,450
 JD KBA 28 Disc Wheel Carrier\$625

ROLLER HARROWS AND CULTIMULCHERS

Coming In...
 4 Wheel Gas Golf Carts
 JD 7700 Hydro Turbo 78 Hyd Auger Latch Chopper D.A.M. Sharp
 JD 7720 Hydro D.A.M. Chopper 215 Flex
 JD 8630 30.5x32 12' Leon Blade 3 pt. PTO Low Hours

Store Hours

PARTS- Mon. Thru Fri. 7:30 A.M. To 4:30 P.M.
 Sat. 8:00 A.M. To Noon
 SERVICE- Mon. Thru Fri. 8:00 A.M. To 4:30 P.M.

CULTIPACKERS

Brillion 12' w/Big Shaft.....\$1,250
 Brillion 12' Packer w/Transport\$1,850
 JD 10' Packer.....\$ 750

PLOWS-MOLDBOARD AND CHISEL:

IH #55 11 Tooth Pull Type Chisel.....\$1,850
 IH 9 Tooth 3 Pt. Chisel.....\$1,850
 JD 7B 2500 Plow.....\$3,950
 JD 1450 6-16" Semi-Mtd. Plow.....\$2,250
 JD 1B Roll-Over Plow\$1,250
 IH 9 Tooth Pull Type Chisel\$1,850
 JD 3200 6x18" Pull Type Auto Reset Plow.....\$3,950
 Artsway 12 Ft. 3 Pt. Chisel.....\$1,650
 JD 5B Semi-Mtd. Roll-Over Plow\$4,850
 JD 2700 5x18" Auto Reset Plow.....\$4,850
 JD 2500 5x18" Auto Reset On-Land Plow.....\$2,950
 IH 710 4-16" Auto Reset Semi-Mtd. Plow.....\$ 2,450

PLANTERS & GRAIN DRILLS:

JD 8300 21x7 DD Drill.....\$3,450
 Oliver 13x7 Grain Drill SD w/Grass, Nice.....\$1,150
 MF #43 21x7 Plain Grain Drill\$1,050
 JD 7000 6 Row Planter, Dry Fertilizer\$7,450
 JD 23x7 DD Drill w/Press Atch.....\$4,850
 JD 11 Row 15" Bean Planter.....\$1,575
 JD 7000 6 Row Planter w/Dry Insect. And Monitor.....\$ 4,250
 6 Each 7000 Planter Units.....Each \$575
 IH 800 4 Row Plate Planter, Dry Fert. Monitor\$4,250

ROW CROP CULTIVATORS & ROTARY HOES

JD 8 Ft. 3 Pt. Rotary Hoe.....\$650
 JD 6 Row RM Cultivator.....\$1,250
 JD 4 Row RM Cultivator.....\$1,050
 JD Ft. Mtd. 4 Row Old Style Cultivator.....\$450

MISCELLANEOUS:

JD 146 Loader w/SOLD Dive.....\$2,450
 JD 16.9x34 Direct Axle Duals w/New Tires.....\$1,200
 Transcraft 42' Drop Deck Trailer, Air Ride, Nice\$8,500
 Several Electric Golf Carts With Chargers..... Each \$750
 8 H.P. Trash Pump\$550
 3 Pt. Box Scraper.....\$625
 7' Rhino Heavy Duty Blade.....\$975
 Century 200 Gal. Mtd. Sprayer, 40' Boom, Hyd. Pump.....\$1,250
 JD 37 Loader w/Hy SOLD Bucket.....\$1,250
 16' Tandem Axle Utility Trailer.....\$1,450

USED SKID STEER LOADERS & ATTACHMENTS

Gehl Skid Steer Forklift Attach\$375

USED PARTS FOR THE FOLLOWING MACHINES:
 1-800-441-4450

- 2500, 2600, 2700 & 2800 Plows
- F350 Hydraulic Reset Plows
- Cultivator Parts
- Grain Drills
- Trip Plows
- Disc Harrows
- Cultipackers and Roller Harrows (John Deere and Brillion)
- 35 and 3800 Harvesters
- Grain Platform
- Combine Corn Head

This is a partial listing. Please call for availability even if your machine is not listed.

DOEBLER'S hybrid alfalfa seed
 Doebler's Alfalfa Seed In Stock

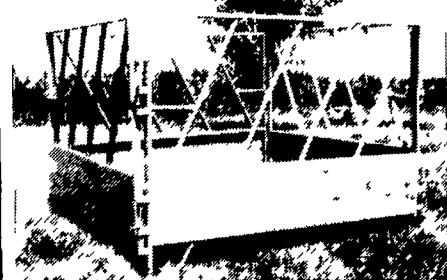


STEEL BARN EQUIPMENT

AUTOMATIC HEADGATE

- Double Linkage For Extra Stability
 - Fast, Easy Adjustment On Both Sides So Animal Size Can Be Adjusted Under Pressure
 - No Wrenches Needed To Adjust Back Set Open
 - Full Sheet Protection On Front
- Optional Chute

HAY BALE FEEDERS



- Feed big round & reg. bales or stacks
- ½" formed steel channel and 1" sch. 40 pipe, all welded construction
- 14 ga. sheet metal around bottom helps reduce hay loss

LAPP'S BARN EQUIPMENT

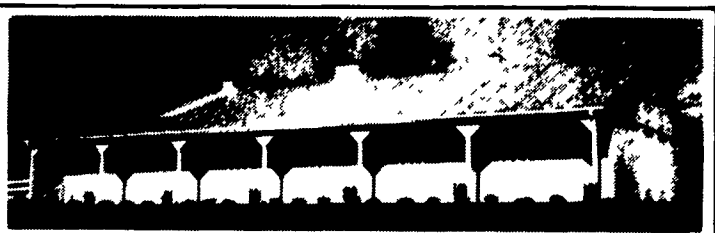
5935 OLD PHILADELPHIA PIKE, GAP, PA 17527
 PHONE: 717-442-8134
 WE SERVICE WHAT WE SELL
 — Radio Dispatched Trucks —

AGRI-INC.

Custom Built Farm Buildings
 Designed To Your Needs



HEIFER BARN & TIE STALL BARN



HORSE STALL BARN

Let Our Experience Work For You

- Dairy Complexes And Replacement Stock Facilities
- Horse Stall Barns And Riding Arenas
- Workshop And Machinery Storage Buildings
- Timber Column Buildings For Light Commercial



AGRI-INC. The Construction Professionals

151 E. Farmersville Rd., Ephrata, PA 17522
 • (717) 354-4271
 Serving The Agricultural Industry For Over 25 Years

