

Explore The Agricultural Roots Of The Big E

WEST SPRINGFIELD, Mass. — Eastern States Exposition remains true to its agricultural roots, which took hold in 1916 when Joshua L. Brooks founded the West Springfield facility as a showcase for New England farmers.

Decades later, The Big E proudly continues the tradition by presenting the finest agriculture and livestock contests as well as educational exhibits which help to take the mystery out of agriculture for fairgoers. The 73rd edition of "New England's Great State Fair" takes place Sept. 16 - Oct. 2.

The Big E boasts the largest livestock show in New England, traditional and modern farming demonstrations, plenty of agricultural exhibits and contests, and many interesting displays, all on the grounds of Eastern States Exposition.

• **Barn Tours, "The Original,"** sponsored by Freihofer's. Fairgoers may learn "fun facts" about agriculture and livestock by taking a free Barn Tour, sponsored by Freihofer's. Professional agricul-

tural experts show fairgoers around Mallory Complex, Young Building and Farm-A-Rama, giving them a unique look behind the scenes of livestock areas and agricultural exhibits. Tours leave several times a day from under the rotunda of Mallory Complex from 10 a.m. to 6 p.m.

• **The Big E Livestock Shows.** Continuous livestock shows and competitions will be held for beef and dairy cattle, sheep, goats, llamas and swine. The Draft Horse Show will be held Sept. 28 - 29 in the Coliseum; the 4-H Horse Show will take place Sept. 23 - 25; pulling contests include an oxen pull, Sept. 26 and a horse pull, Sept. 27. The newest livestock event at this year's Big E is the Simmental Beef Show, a breed of beef cattle, which takes place Friday, Sept. 16 at 2 p.m. Special livestock events include the Northeast Fall National Holstein Show, for the first time at The Big E, Sept. 22 at 9 a.m.; and the Eastern Regional Jersey Show, Sept. 27 at 8 a.m.

The Eastern States Exposition

Sheep Show will feature antique sheep shearing demonstrations, sheep dog herding and a sheep's wool spinning bee. Special events this year include the National Montadale Show, Sept. 17 at 1:30 p.m.; New England and Atlantic Coast Regional Columbia Show, Sept. 24 at 1 p.m.; National Tunis Show, Sept. 26, at 1 p.m.; and the Regional Cotswold Show, a new breed of sheep, Sept. 28 at 9 a.m.

The open Llama Show takes place Friday, Sept. 30 - Sunday, Oct. 2. Several events, including new additions of the Fashionable Camelid Fiber Show and Golden Lead Class, take place throughout the three-day show. There will also be an Egg and Spoon Race Sunday, Oct. 2 and the popular Llama Costume Class takes place the final day of the event.

• **The giant pumpkin and squash contests and best decorated pumpkin contest,** sponsored by New Milford Farms, will take place in Mallory Complex at 10 a.m. Sept. 16. Cash prizes for adults and savings bonds, bowls

and ribbons for children will be awarded for the largest pumpkins and squash and for the best decorated pumpkins. Pumpkins weighing more than 400 pounds may also win cash prizes in the "Really Big" Pumpkin Weigh-In, also sponsored by New Milford Farms, Sept. 23 in Mallory Complex at 10 a.m. The top ten entries from all contests will be displayed in the Farm-A-Rama building throughout the fair.

• **Farm-A-Rama - Entertainment for all ages is plentiful at Farm-A-Rama,** one of the most popular family attractions each year at The Big E. Fairgoers find prizewinning produce, demonstrations by area farmers and many horticulture and agriculture exhibits. One of the most popular attractions is the baby chick hatchery, where fairgoers can watch as baby chicks emerge from their shells and begin life every day. Members of FFA will demonstrate aquacul-

ture, the harvest of underwater animals and plants and display horticulture and landscaping exhibits. Fairgoers may also learn about ostriches, emus, and rheas at the brand-new ratite display in the popular building.

Farm-A-Rama is also home to the Hallamore Clydesdales, eight colossal draft horses which inspire jaw-dropping reactions as fairgoers line up to witness the long process of preparing these huge animals for their appearance in the Daily Parade. Interesting farm and exotic animals can also be seen in Farm-A-Rama.

• **The 1994 Christmas Tree Show and competition** will take place Friday, Sept. 16. Although the winter holidays seem far away, the show will provide information on how to pick a tree and give fairgoers a chance to "show what they know" in mock tree judging contests. Trees will remain on display for the remainder of the fair.

Burkholder Dairy Joins

ABS Program

DeFOREST, Wis. — David Burkholder, Shippensburg, Pa., recently joined the American Breeders Service (ABS) Progeny Test (PT) program.

The PT program enables test herds, such as the Burkholder herd, to use semen from young, unproven ABS sires. In return, these test herds provide ABS with information about the offspring from these young bulls.

After supplying ABS with this information, Burkholder will receive compensation for each ABS-PT calf born and for each ABS-PT daughter included on the sire's second USDA summary.

The program's goal is to have each progeny-tested young sire graduate the program with a highly-reliable sire summary,

while giving test herds the opportunity to use the genetics of tomorrow—today. This program is unique because it gives test herds the option to choose which bulls they would like to use from a large selection of young ABS-PT sires.

Since genetic evaluations rely on the data supplied by PT herds, ABS screens potential herds carefully before adding them to the program. The Burkholder herd was selected based on superior management practices, efficient record-keeping, and accurate animal identification.

Producers interested in more information about the ABS Progeny Test program should contact their local ABS Representative or call 800-ABS-STUD.

Carroll County Holds 4-H, FFA Fair

(Continued from Page D4)

Dairy Goat Department: Grand Champion Market Goat - John Mladjenovich, Grand Champion Alpine-Jason Ridinger, Grand Champion Nubian- Becky Alvarez, Grand Champion Recorded Grade- Bryan Harris, Grand Champion Other Purebred - Bryan Harris, Best Doe in Show- Becky Alvarez.

Sheep Department: Grand Champion Ram- Mike Utz, Grand Champion Ewe- Mike Utz, Grand Champion Fitting & Showing- Gabe Zepp, Champion Pair of Market Lambs- Jennifer Howard, Grand Champion Market Lamb- Jennifer Wildesen, Reserve Grand Champion Market Lamb- Brett Fogle.

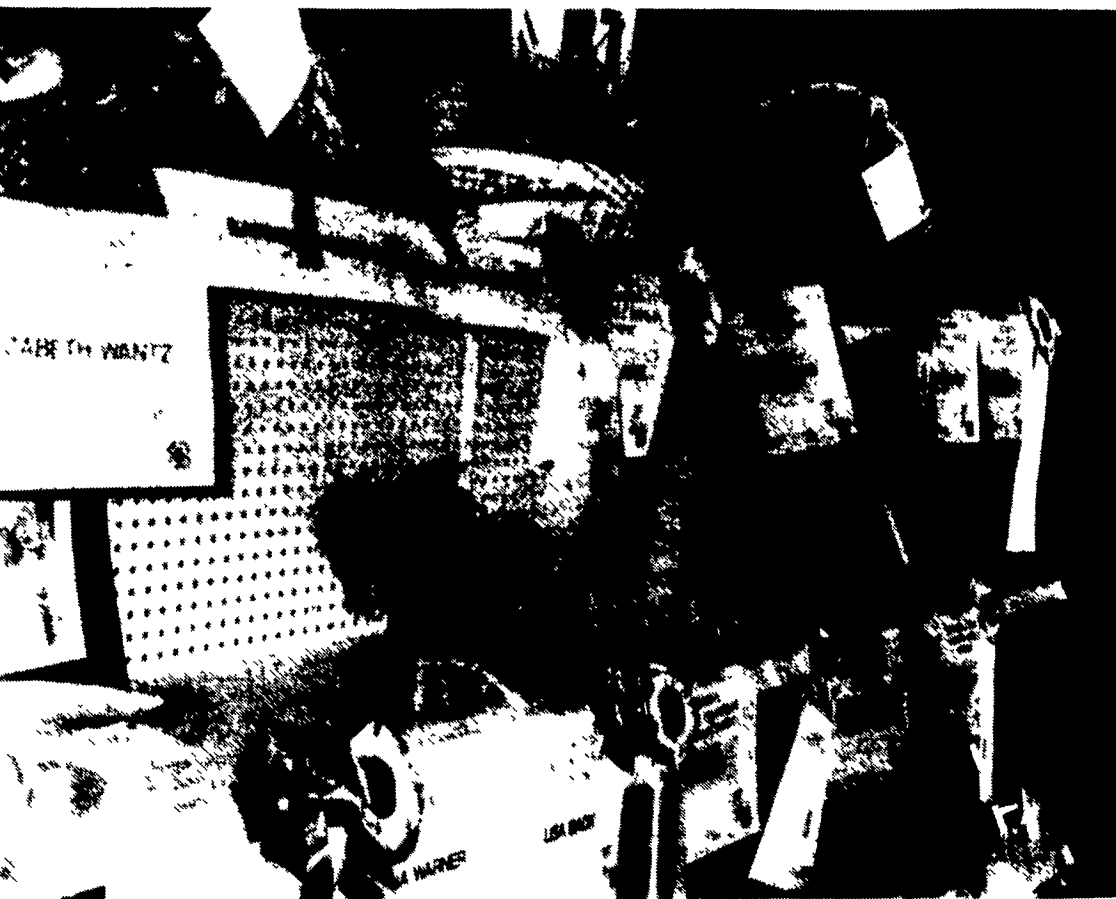
Swine Department: Grand Champion Market Swine-Monica Feaser, Reserve Grand Champion Market Swine- Brett Fogle, Grand Champion Pair of Market Swine- Aaron Geiman, Grand Champion Fitting & Showing- Eddie Harrison, Jr., Champion-Producer of Performance Class - Tracy Cleggett, Champion Producer - Ryan Seiler.

Rabbit Department: Grand Champion Rabbit - Jennifer Wade, Reserve Grand Champion Rabbit- Shannon Szymanski, Grand Champion Cavy- Cara Baummer, Reserve Grand Champion Cavy - Theresa Brown.

Poultry: Grand Champion Poultry Exhibit- Justin Barber, Reserve Grand Champion Poultry Exhibit- Kelly Haines, Grand Champion Eggs- Kelly Haines, Champion Waterfowl- Nicholas Thurston.



4-Her, Rachel Dyky shows the calf, Elvis to Ian Stambaugh in the petting zoo at the Carroll County 4-H & FFA Fair.



Garden basket exhibits line the shelves at the fair.

BUY, SELL, TRADE OR RENT THROUGH THE CLASSIFIED ADS

PHONE: 717-626-1164 or 717-394-3047
FAX 717-733-6058

Mon., Tues., Wed., Fri. 8 AM to 5 PM; Thurs. 7 AM to 5 PM

1 FARM EQUIPMENT

560 Long 4x4 tractor with loader. Ben Shirk, Ephrata, PA 717/354-7209.

#58 NH Thrower Complete. \$900 OBO. (717)922-4571.

600 Ford tractor, fresh engine and paint, excellent condition. WANTED: 3ph 7' snow blower. (717)724-2274.

6600 diesel, good, shedded, rotary screen, only \$8,950. Call Stephen 717-249-2317

6600 JD combine, w/13' flexhead, \$6000 OBO. 717-672-2047.

6 row Huggerhead late style for Gleaner M-3 combine, like new. 717-776-7692

702 Uni system, \$1,500. Husking bed \$850. 3R picker head \$500. Pickup head \$150. Combine \$100. Platform grain head \$350. Chopper unit \$500. NH chopper wagon #6, \$1,000. (814)763-4874.

708 Uni, 4WD, AC, good condition, \$11,900. (717)786-1458.

709 NI power unit, 839 husker, 844N corn head, 717 combine, good condition. Augusta Co. 703-828-2724.

709 Uni-System, 4WD, 2200 Hours, 4R Chopper and Combine, (814)632-8684.

709 Uni tractor, 4WD, 2,000 hours, good condition, \$12,500. (717)776-7725.

7720 diesel, heavy axle, dial-a-matic, chopper, very good, field ready, \$25,500. Call Stephen. 717-249-2317

7' Fox forage head, \$2,450.; 7' Deere, \$2,450.; Adapter to put picker head on Deere, \$1,250. Call Stephen. 717-249-2317

7' Rhino rotary mower; 252 Oliver disc, 10'. 610-469-9633.

9' IHC 28 disc harrow, transport, \$875. 10' transport disc harrow, \$575. 14-9-28 tire on rim, 6 lug, f/dish wheel, \$75. (610)488-0723.

AC 15' rigid header for L2 or M2, very good, \$3250. 717/249-2317.

AC 190XT CAB Duals, Rebuild Eng. Many New Parts. PTO Not Working. Good Condition. \$4000. (717)865-5719.

(3) grain wagons, \$450/ea. White Hall, Baltimore Co., MD. 410-357-4073 After 7PM.

3Pt. Flail Mower, 6'; 5'X8' Enclosed Trailer, \$550; 3Pt. 1 Bottom Plow. (717)442-4279.

3 Pt. Hitch Equipment: IHC sickle bar mower 7', Ford 5' rotary mower, MF 5' rotary mower, mechanical transplanter w/new tank. Thom Wheary, 717/687-0102.

46'-8" Cardinal transport auger, electric drive, rebuilt, like new, \$2,250 OBO. (717)792-9930.

4 HP engine w/6' blower for vacuuming up leaves and grass. Mounts on riding mowers, \$350 Phone 610-754-7366.

510 diesel, very nice, 1144 & grain head, \$10,450. Call Stephen 717-249-2317

52' Python grain auger, IHC 15D combine, new 1975; 4R cornhead, 13' grainhead. 717-649-6439 after 3PM

5400 Deere Chopper, low hrs., 4x4, most any heads, small knives. Larry Stalter "The Chopper Man" 1-800-248-2151