

# ARMSTRONG

## Rhino-Tough Tires

# SPECIAL!

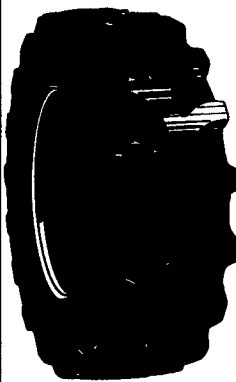
- 6.50-16 - 6 PLY - 3 RIB..... \$45<sup>00</sup>
- 7.50-16 - 6 PLY - 3 RIB Blen..... \$50<sup>00</sup>
- 11.00-16 - 8 PLY - 3 RIB Blen..... \$95<sup>00</sup>
- 14L 16.1 - 12 PLY - 3 RIB..... \$220<sup>00</sup>

**CALL FOR QUOTE  
ON TRUCK TIRES!**



### BACKHOE

★ TUBELESS ★



- 14.9x24, 8 Ply, Tubetype..... \$260.00
- 16.9x24, 8 Ply..... \$315.00
- 16.9x24, 10 Ply..... \$350.00
- 16.9x28, 8 Ply..... \$285.00
- 17.5x24, 8 Ply..... \$285.00
- 17.5Lx24, 10 Ply..... \$345.00
- 18.4x24, 8 Ply..... \$425.00
- 19.5Lx24, 10 Ply..... \$440.00
- 19.5Lx24, 12 Ply..... \$620.00
- 21Lx24, 12 Ply..... \$618.00

### LOADER DOZER

- 15.5x25, 12 Ply..... \$365.00
- 17.5Lx25, 12 Ply..... \$480.00
- 20.5x25, 12 Ply..... \$740.00
- 23.5x25, 12 Ply..... \$1,180.00
- 23.5x25, 16 Ply..... \$1,250.00
- 20.5x25, 16 Ply..... \$900.00

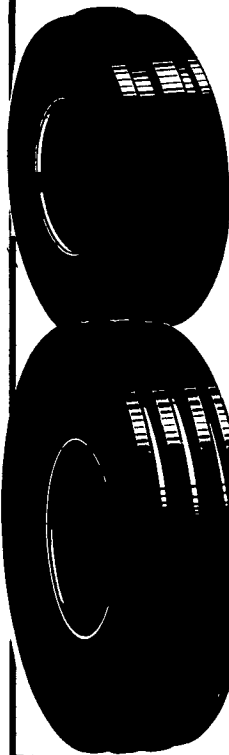


### GRADER

- 1300x24, 10 Ply..... \$270.00
- 1300x24, 12 Ply..... \$285.00
- 1400x24, 12 Ply..... \$325.00
- 1400x24, 12 Ply Tubeless..... \$410.00

### FRONT TRACTOR

★ 3-RIB ★



- 600-16, 6 Ply..... \$47.00
- 650-16, 6 Ply..... \$49.00
- 400-15..... \$32.50
- 400-19, 4 Ply..... \$36.00
- 500-15..... \$36.00
- 550-16, 4 Ply..... \$40.00
- 550-16, 6 Ply..... \$43.00
- 600-14, 6 Ply..... \$77.00
- 750L-15, 6 Ply..... \$53.00
- 750-16, 6 Ply..... \$60.00
- 750-16, 8 Ply..... \$72.00
- 750-18, 6 Ply..... \$69.00
- 750-20, 6 Ply..... \$94.00
- 9.5L-15, 6 Ply..... \$72.00
- 9.5L-15, 8 Ply..... \$78.00
- 10.00-16, 6 Ply..... \$94.00
- 11Lx15, 8 Ply..... \$95.00
- 1100-16, 8 Ply..... \$110.00
- 14L-16.1, 8 Ply..... \$242.00

★ 4-RIB ★

- 11L-15, 8 Ply..... \$91.00
- 10.00-16, 8 Ply..... \$88.00
- 11.00-16, 8 Ply..... \$105.00
- 14L-16.1, 8 Ply..... \$220.00
- 16.5L-16.1 (TL), 8 Ply..... \$265.00



### SUPER HI TRACTION LUG RADIALS

- 18.4R34 ★..... \$530.00
- 16.9R38 ★★..... \$590.00
- 18.4R38 ★..... \$535.00
- 20.8R38 ★★..... \$860.00
- 20.8R38 ★..... \$710.00
- 18.4R42 ★★..... \$690.00
- 20.8R42 ★★..... \$890.00



### RADIAL FRONT WHEEL ASSIST

- 16.9R26 ★★..... \$515
- 18.4R26 ★★..... \$640
- 14.9R28 ★★..... \$490
- 16.9R28 ★★..... \$510
- 14.9R30 ★★..... \$560
- 16.9R30 ★★..... \$585



### HI TRACTION LUG



**'SERVICE AVAILABLE...**

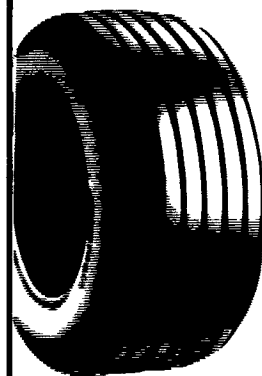
**CALL FOR QUOTE**

- 11.2X24, 4 Ply..... \$132.00
- 11.2X24, 6 Ply..... \$155.00
- 11.2X24, 8 Ply..... \$205.00
- 14.9X24, 4 Ply..... \$200.00
- 14.9X24, 6 Ply..... \$225.00
- 14.9x24, 8 Ply..... \$305.00
- 16.9x24, 6 Ply..... \$260.00
- 16.9x24, 8 Ply..... \$340.00
- 14.9x26, 6 Ply..... \$233.00
- 18.4x26, 6 Ply..... \$355.00
- 18.4x26, 10 Ply..... \$475.00
- 23.1x26, 8 Ply..... \$875.00
- 11.2x28, 4 Ply..... \$165.00
- 12.4x28, 4 Ply..... \$180.00
- 13.6x28, 4 Ply..... \$192.00
- 13.6x28, 6 Ply..... \$220.00
- 14.9x28, 4 Ply..... \$210.00
- 14.9x28, 6 Ply..... \$235.00
- 14.9x28, 10 Ply..... \$430.00
- 16.9x28, 6 Ply..... \$275.00
- 16.9x28, 8 Ply..... \$345.00
- 16.9x28, 10 Ply..... \$370.00
- 16.9x30, 6 Ply..... \$300.00
- 16.9x30, 8 Ply..... \$365.00
- 18.4x28, 6 Ply..... \$390.00
- 18.4x30, 6 Ply..... \$340.00
- 18.4x30, 8 Ply..... \$385.00
- 23.1x30, 8 Ply..... \$700.00
- 24.5x32, 10 Ply..... \$920.00
- 16.9x34, 6 Ply..... \$340.00
- 18.4x34, 6 Ply..... \$360.00
- 18.4x34, 8 Ply..... \$435.00
- 20.8x34, 8 Ply..... \$660.00
- 23.1x26, 10 Ply..... \$705.00
- 23.1x34, 8 Ply..... \$950.00
- 11.2x38, 4 Ply..... \$205.00
- 12.4x38, 4 Ply..... \$230.00
- 13.6x38, 4 Ply..... \$230.00
- 13.6x38, 6 Ply..... \$263.00
- 14.9x38, 6 Ply..... \$300.00
- 15.5x38, 6 Ply..... \$285.00
- 15.5x38, 8 Ply..... \$340.00
- 16.9x38, 6 Ply..... \$370.00
- 16.9x38, 8 Ply..... \$440.00
- 18.4x38, 6 Ply..... \$385.00
- 18.4x38, 8 Ply..... \$440.00
- 20.8x38, 8 Ply..... \$580.00
- 20.8x38, 10 Ply..... \$780.00

### SMALL REAR FARM TIRES

- 750x20, 4 Ply..... \$91.00
- 750x24, 4 Ply..... \$94.00
- 8.3x24, 4 Ply..... \$107.00
- 8.3x24, 6 Ply..... \$130.00
- 9.5x24, 4 Ply..... \$120.00
- 9.5x24, 6 Ply..... \$128.00
- 11.2x34, 4 Ply..... \$210.00
- 11.2x36, 4 Ply..... \$200.00
- 12.4x24, 4 Ply..... \$158.00
- 13.9x36, 6 Ply..... \$295.00

### WAGON TIRES



- 26.1200x12, 4 Ply..... \$55.00
- 8.5x14, 6 Ply..... \$55.00
- 9.5Lx14, 8 Ply..... \$65.00
- 9.5Lx15, 8 Ply..... \$48.00
- 11Lx14, 6 Ply Tubeless..... \$86.00
- 11Lx15, 8 Ply..... \$50.00
- 1000x15, 8 Ply..... \$73.00
- 11Lx15, 8 Ply Tubeless..... \$58.00
- 11Lx16, 8 Ply..... \$85.00
- 11Lx16, 10 Ply Tubeless..... \$82.00
- 12.5Lx15, 10 Ply..... \$72.00
- 12.5Lx16, 14 Ply..... \$102.00
- 12.5Lx15, 12 Ply..... \$110.00
- 14Lx16.1, 12 Ply..... \$200.00
- 16.5Lx16.1, 10 Ply Tubeless..... \$190.00
- 19Lx16.1, 10 Ply Tubeless..... \$250.00
- 21.5Lx16.1, 10 Ply Tubeless..... \$200.00
- 25x7.50x15, 4 Ply Tubeless..... \$57.00
- 25x7.50x15, 6 Ply Tubeless..... \$65.00
- 27x9.50x15, 4 Ply Tubeless..... \$68.00
- 27x9.50x15, 6 Ply Tubeless..... \$83.00
- 27x9.50x15, 8 Ply Tubeless..... \$80.00
- 31x13.50x15, 6 Ply Tubeless..... \$128.00
- 31x13.50x15, 8 Ply Tubeless..... \$140.00

### CONTRACTOR F-3

- 11Lx16, 10 Ply..... \$100.00
- 11Lx15, 8 Ply..... \$85.00
- 11Lx15, 10 Ply..... \$105.00
- 750 800x16, 10 Ply..... \$104.00
- 11Lx16, 12 Ply..... \$130.00
- 145 - 75 - 16.1, 10 Ply..... \$286.00
- 11.00-16 12 Ply TL..... \$160.00

### SKID LOADER TIRES



- 570x12, 4 Ply..... \$45.00
- 23.850x12, 4 Ply..... \$53.00
- 27.850x15, 4 Ply..... \$61.00
- 27.850x15, 6 Ply..... \$84.00
- 27.1050x15, 6 Ply..... \$88.00
- 700x15, 6 Ply..... \$78.00
- 10-16.5, 6 Ply..... \$80.00
- 10-16.5, 8 Ply..... \$88.00
- 12-16.5, 8 Ply..... \$125.00
- Steel Shield
- 10-16.5, 6 Ply..... \$110.00
- 12-16.5, 8 Ply..... \$180.00



Central Warehouse  
1916 W. Main Street  
Mt. Joy, Pa. 17552  
717-653-1260

Branch Warehouse  
Northumberland, Pa.  
717-473-3974  
1-800-257-5908

## MUMMAU TIRE SERVICE CENTER

In Pa., Call Toll Free: 1-800-222-1729  
NJ, DEL. & MD. - Call 1-800-638-3054