

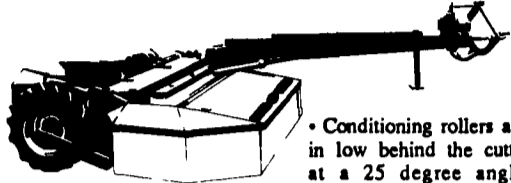
New from Vicon...  
 For high capacity performance,  
 nothing else can make the cut

Vicon's original KM mower conditioners set new standards for clean cutting, no plug productivity. Now, with introduction of the new GMR series, field performance has reached new levels of efficiency, with more strength, more stability and even better cutting and conditioning than before.

**Vicon engineers listened**

• Mainframes are stronger, with less weight. Completely redesigned with a lower profile and welded side panels to deliver the endurance and stability you need to keep harvesting on schedule.

• New FLAT, STRAIGHT Cutterbars have improved bearings and single, one piece skids to protect the full cutterbar length.



• Conditioning rollers are set in low behind the cutterbar at a 25 degree angle to streamline crop flow, leaving

high, fluffy swaths for fast curing and drying. A new V-belt drive protects the rollers against blockage.

• Noise levels have been drastically reduced with a re-designed front gearbox and mounting for quieter operation.

You can still cut square corners on the move with the new full swivel ball hitch engineered for maximum maneuverability. Plus there's a new computer designed mechanical suspension system that smooths the ride in the roughest conditions.

These machines are simple to operate with an advanced 3-bladed disc cutting and conditioning system that turns acres into miles of fast curing, nutrient-rich hay.

Choose from three reliable models with working widths of 7'8", 9'2" and 10'6".

Vicon's new GMR 2400/2800/3200 mower conditioners.  
 When average won't cut it.



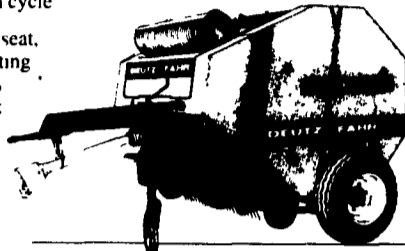
GREENLAND

**NEW** OptiCut  
 Deutz Fahr adds the cutting edge to round baling profitability

Fourteen razor-sharp cutting blades turn the OptiCut into a universal machine for baling hay, straw and silage.

High moisture forage is chopped as it goes into the baler, reducing full length stalks to four or five inch lengths. Proven ribbed profile rollers compress material into an extremely dense 4' x 4' bale, weighing up to 1500 lbs. on the GP 2.30OC, depending on the crop and moisture level. Bale density is 20-25% higher. More material gets into the bale eliminating oxygen and speeding and enhancing the fermentation cycle.

From the tractor seat, the complete cutting mechanism folds hydraulically out of the way so the OptiCut operates as a normal baler in hay and straw.



A fully automatic twin arm tying system gives you the speed and flexibility to wrap the bale securely with a minimum of twine and material loss. If you want more protection for your baled crop, add the netting attachment to wrap with net, twine, or a combination of both. All functions are monitored through the control box mounted in the tractor cab.

- GP 2.30 OC - For solid 4' x 4' bales.
- GP 2.50 OC - For a bigger 4' x 5' package.



The NEW Deutz-Fahr OptiCut. Your best choice for more profitable hay, straw and silage bale production.

GREENLAND



**TANCO AUTO-WRAP HAYLAGE WRAPPERS**



- ★ Designed for heavy use
- ★ Wraps bales of up to 2200#
- ★ Handles even mishapen bales
- ★ Exclusive design for optimum performance and capacity
- ★ 3 pt. or trailed models
- ★ Competitively priced

**MILLER PRO Model 5100 Forage Box**



- Unitized High Strength Steel Box
- 4-Speed Transmission Operates in a Sealed Oil Bath
- Independent Feathering Clutches for Metering Augers and Outfeed
- Best Warranty in the Industry



4-speed shift-under-load gear transmission

**MILLER ST. NAZIANZ**

**Miller Pro Running Gear**

- Choice of Models from 10-14 Tons
- Automotive-Type Steering
- C-Channel Design for Best Stability & Tracking

**Miller Pro Retail Financing**

Miller Pro has its own finance company to provide customers with great rates and broad payment options.

Quality Equipment for Farming in the 1990s

**Why Settle for Less Than A WESTENDORF**

- |                          |                                     |                                                                                            |
|--------------------------|-------------------------------------|--------------------------------------------------------------------------------------------|
| Others                   | Westendorf                          |                                                                                            |
| <input type="checkbox"/> | <input checked="" type="checkbox"/> | Patented Power Mount mounts itself while you stay on tractor.                              |
| <input type="checkbox"/> | <input checked="" type="checkbox"/> | Patented Custom Adjust Bracket System.                                                     |
| <input type="checkbox"/> | <input checked="" type="checkbox"/> | Low Profile provides greater visibility on both 2 w.d. & 4 w.d. from 10 to 325 HP.         |
| <input type="checkbox"/> | <input checked="" type="checkbox"/> | Patented Snap Attach Quick Coupler hook up attachment from the seat of your tractor.       |
| <input type="checkbox"/> | <input checked="" type="checkbox"/> | Low Price and Superior Quality on tractors from 10-325 HP                                  |
| <input type="checkbox"/> | <input checked="" type="checkbox"/> | Resale Value Westendorf quality often means \$1000 plus in resale value over other loaders |

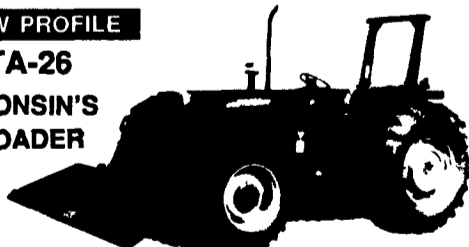
30 to 120 H.P.

Don't allow yourself to settle for less than the best. Only WESTENDORF Loaders offer all these "superior features" at a low cost.

**LOW PROFILE**

TA-26

WISCONSIN'S #1 LOADER

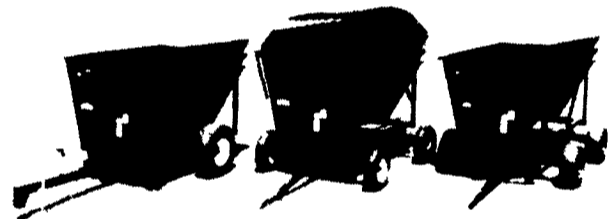


**WESTENDORF MANUFACTURING CO., INC.**

ONAWA, IOWA 51040 PH. 712-423-2762



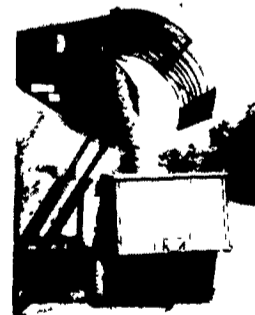
Building quality equipment for over 30 years!



U.F.T. HIGH DUMP WAGON OR CART  
 MULTI-CROP USE



BIG CAPACITY — LOW MAINTENANCE — NO UNHOOKING



NO LOSS OF TIME — DUMPS IN 60 SECONDS — AND YOU'RE ON YOUR WAY.

**SAVE:**

- ▼ LABOR
- ▼ DOWNTIME
- ▼ EQUIPMENT COST



DISTRIBUTED BY



100 Stover Drive  
 Carlisle, PA 17013  
 Phone (717) 249-6720

111 Cedar Street  
 P O Box 928  
 Batavia, NY 14020  
 Phone (716) 343-5411

**STOP & SEE US AT AG PROGRESS DAYS On W. 8th ST.**