

**MAILBOX MARKET
FOR SALE**

Corn crib 40 tin below wire above English Boxwood 18 24 717-741-1211 York Co.

AKC Cocker Spaniel 4 year old male 2 yr. old Pomeranian male, good breeders. Lanc. Co. 717-445-7113.

Black and white male and female fox terrier pups, seven weeks old. \$25-\$40. Lanc. Co. 717-445-7461.

Oliver 77 row crop WF gas Oliver 16 2 btm. plow, Woods M5 Dixie cutter. North Co. 610-767-3431.

JD 2RN corn head for chopper, Pennco barley certified last year, 16.9x30 tubes, tires free. Berks Co. 610-367-7256 no Sunday calls.

Ford Commodore 6,000 rebuilt starter, 20' engine, corn elevator, 2 row dis, 14' wagon, 61 Chevy station wagon, Bucks Co. 215-536-6814.

1985 Chevy cube van wide alum. 14' body, new inspection commercial produce cooler, 1 horse compressor with 3 fan cooler unit, 220V, Dauphin Co. 717-365-3294.

Horn front end loader for 135 Massey Ferguson \$100. 250 gal. fuel tank with hand pump Berks Co. \$100. 610-562-7741.

Vac-o-Way grain cleaner \$75. Woods corn picker, offer. D.M.C. 40 grain cleaner with auger \$1100. Adams Co. 717-359-4796.

Engine and automatic trans. from a low mileage 1983 SL Subaru \$650. 6' oak church pew \$120. Berks Co. 610-777-4579.

Dynavent straw chopper eight horse Honda sound cond. new knives. Leb. Co. 717-866-9093.

Gray Mammoth jack 57" 2 yr. Breeds mares, green broke, quiet. 57' bay work mule colt yearling, fancy. Perry Co. 717-582-4953.

JD MT tricycle S#18556, not running, needs restoration \$2000. JD 420-C eng. runs, needs restoration, 5 roller \$2000. JD 40-T S#63639 V.G. metal; Over-all good cond. Use as is or restore, Ferguson 3 Pt. 7' sickle bar mower \$150. Lehigh Co. 610-760-0248.

Used 20 ft. Van Dale silo unloader, also, 18 ft. Badger unloader, very good cond. Kreider Farms, Manheim, Pa. 717-665-4415 Lanc. Co.

NH 778 Ford diesel skid loader one hydrostatic needs repair \$3500, NH 323 like new picked 150A corn \$2995. NH 456 trailer mower very sharp \$1590. 717-354-9144.

81 Chevy pickup spoke wheels, PA inspected 8 cyl. automatic, reliable work truck, new battery 2,200 OBO. 717-733-6997 Lanc. Co.

Collie purebred with shots, male 10 weeks old, sable & white. Lanc. Co. 717-354-0584.

Kubota B-6100 diesel 3 pt. hitch, with mower \$4000. Kubota G-2200 diesel with mower \$2200 both in ex. cond. Chester Co. 610-358-0725.

2 mobile home oil furnaces 154000 BTU elec. furnace, also ear corn. Lanc. Co. 717-665-3393.

Pheasants blue eared swinhoe goldens, reeves silers, elliotts, most this years hatched, Ken Knowlader 607-692-3198 or 315-684-7920 Broome Co.

1936 Ahrens Fox firetruck rotary gear pump will send pictures, will deliver, ex. working order \$11,000. Suffolk NY 516-283-3408.

Jacob ram lambe, top quality, reg. ready for breeding, 2 horns \$200. ea. Jacob-X 4 horn \$75. friendly. Leb. Co. 717-866-4678.

Black walnut trees (6) ranging from 30 inches circumference to 120" cir. Fayette Co., 412-438-5761.

New Idea #323 one row corn picker, good cond. Lanc. Co. 717-653-4479.

White Cashmere doelings & wethers, style 3 parents, also Cashmere - Alpine kids, reasonably priced. North'ton Co. 610-253-8951.

Irrigation 64AG Gorman Rupp pump 570' 5x30, 2160' 3x30 300' 3x20 35 sprinklers, 2 103DH guns, \$3800. Cumb. Co. 717-486-7633.

1973 Chev triaxle 17' steel dump, 318 Detroit 13 speed, good tires, many new parts \$10,500. Schuylkill Co. 717-345-2827.

Two 8 inch augers 51 and 53 ft. long. Adams Co. 717-632-8619.

Papecsilo filler 14" feed - 6" pipe, extra knives 40' of pipe \$600. JD 430 \$2600. Somerset Co. 814-662-2417 evenings.

Lancaster Farming, Saturday, August 13 1994-F7

Truck camper 10 1/2' sleeps 6, shower, stove, oven, closet, lot of storage, refrig., toilet, like new inside. Berks Co. 610-670-1260.

Badger 16' silo unloader, John Deere 34 silage harvester, both items, ex. After 8 PM Somerset Co. 814-662-2232.

Llama male seven years old, used in Petting zoo, very quiet, don't spit. Berks Bucks Co. 215-244-9984.

For parts 2N Ford tractor as is Tioga Co. 717-662-7675.

NH 354 grinder mixer, nice \$2995. LH forage wagon #51 needs work. \$200. Cumb. Co. 717-776-4763.

NH 1496 12' SP haybine, diesel, cab, air, 1321 hrs., good cond. gooseneck stock trailer 6'3"x16' Huntingdon Co. 814-447-3713.

Farmall C with 1 row mounted corn picker \$1800 OBO. 1946 2WD stake body truck, make offer. 610-326-0156.

2 Diamond 70 case an hr. egg packers, 15-36" direct drive Coolair fans, Sq. D. breaker and curcuit boxes. John S. King, RD #2 Box 64-1 Honey Brook, Pa. 19344.

2 bulls Prelude sons out of 20,000 to 23,000, dams Ambition for breeding Chester Co. Ben Smucker, 610-593-2970.

25 in. planer, 14 HP, 18 in. jointer, blade grinder, 24 in. disc sander, 25 gal. steam kettle, 310 gal. milk tank, vacuum pump. Northumberland Co. 717-286-5306.

NI 717 combine, 740 throat, 713S head \$1,000 838 husker 744W corn head, needs some work \$2,000. Adams Co. 717-677-8789.

88 Chev van 8,500. 84 Mercedes 300D 9,000. 90 trailer 20 ft. 1800 lots 3 ac. Chester Co. 55,000. 610-347-0703.

4 stands for New Idea picker, sheller attachments, two stationary two adjustable 75.00 OBO. 717-546-5708 Locoming Co.

Michelin all weather radials, four 185/70R13 like new \$200. Also, premium radial with magnesium wheel. P225/70SR15 \$150. Hunt. Co. 908-996-2387.

Gray Percheron lead horse -17+ hands- \$1100. Feller chopper 2-row \$400. Alvin Ebersole, 120S New Holland Rd., Gordonville, Pa. 17529.

Cat 922 rubber tire loader, gas engine V, good cond. Mich. 85A rubber tire loader-bucket forks, gas engine. Berks Co. 610-926-9147.

1984 Crown Victoria exceptional cond. all power options, always garaged \$4,000 OBO. 6H Falcon Futura for restoration. Leb. Co. 717-865-7447.

App. nine acres of wooded land along Rt. 364 Clinton Co. 717-962-2286 evenings.

5 yr. old. S. bred 16 hands, traffic safe, family horse \$1475. Wanted banding tools for 1/2" metal banding. Lanc. Co. 717-445-7101.

12 yr. old grey Arabian mare, green broke, sweet disposition, asking \$1150 610-756-6583 Berks Co.

Homelite transfer pump, Briggs engine OK, pump needs work \$45. Shower stall, White 32"x30" \$55. Lanc. Co. 717-445-7422.

9 HP Briggs and Stratton engine with 12 volt starter \$150. Ephraim Zook, 999 Disston View Drive, Lititz, Pa. Near Rothsville.

MF #92 3 bottom 3 pt. plow \$400. Lanc. Co. 717-355-9557.

Ford 4 cyl. 268 C.I.D. turbo diesel engine, 900 Hrs, 86 HP fits from 5000 thru 710 ex. cond Lanc. Co. 717-445-5697

Tire and tube 15.5x38 good 60% call mornings or evenings. Carroll Co. Md. 410-848-3735 \$125.

4 cylinder Cummins diesel engine with twin disc forward, reverse trans. 105 HP good power unit. 410-658-2483 Cecil Co.

Ford TW20 1981 2500 hr CAH duals very good cond, also new 7155 Hesston chopper two heads. Steuben Co. 607-522-4477 or 607-776-3234.

White Mountain ice cream freezer 8 qt hand crank type, good cond. Lanc. Co. 717-336-7049.

2 Behlen round corn cnbs, ex. shape 50% of new price, 2 Mc Curdy 230 bin wagons on gears \$1100 each. Lanc. Co. 717-626-1467.

C.B. HOOBER & SON, INC.
Intercourse, PA
(717) 768-8231

HOOBER

HOOBER EQUIPMENT, INC.
Middletown, DE
(302) 378-9555

TWO LOCATIONS
The Saving Place

**GREAT VALUES
ON ORIGINAL
EQUIPMENT PARTS**

**Now you can save up to \$20 per row
and be ready for fall harvest
with a deluxe stalk roll kit!**

Part No. B92766 - 1 Row

Designed to fit both 900 series and 1000 series corn heads, the kit includes new heavy duty sealed bearings that are virtually problem free. The deluxe kit includes the knives, gatherer chains and sprockets, as well as the complete roll assembly and augers included in the standard kit. **Buy before August 31 and you'll save \$20 per row on the deluxe kit!**

Full List of Values

- Reduced maintenance time
- Longer bearing life
- Proven field performance
- No greasing required — EVER!

PRODUCT SUPPORT

COMMITTED TO EVERY PART

WE SHIP PARTS DAILY

Via FED. EXP. - UPS - PPSH - BUS - AIR FREIGHT, ETC.

HOURS

Mon.-Fri. 7 AM-5 PM; Sat. 7 AM-Noon



Authorized
UPS Station



YOU STAY PUT

Pick Up Your
Phone And
Place Your
Parts
Order
With
Us

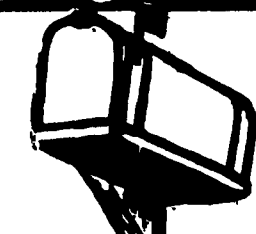
**MAILBOX MARKET
AD FORM**

Only ads submitted on this official form will be published in our mailbox markets.

Please NO PHONE CALLS

(Attach Your Mailing Label Here)

For Sale	Check One:			Wanted
	Notice			
1	2	3		4
5	6	7		8
9	10	11		12
13	14	15		16
17	18	19		20



**FREE TO
SUBSCRIBERS
ONLY**

**PLEASE READ ALL
REQUIREMENTS BEFORE
FILLING OUT FORM!**

- Requirements:
- 1) Subscribers allowed "one" free Mailbox Market per month only.
 - 2) Lancaster Farming Mailing Label must be attached.
 - 3) Limit: 20 words.
 - 4) Phone number must include area code.
 - 5) Your County must be included.
 - 6) Markets must be received in office by Monday or will be held until following week's issue.
 - 7) No Business Ads accepted.

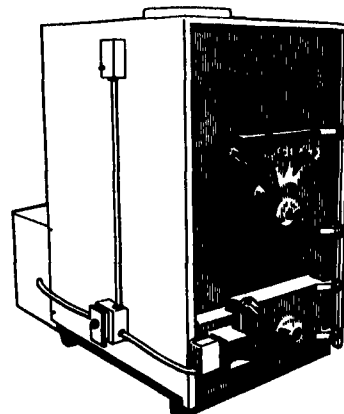
"The Lancaster Farming staff has the right to reject any Mailbox Markets that do not meet these requirements."

Mail To:
Lancaster Farming
Mailbox Markets
P.O. Box 609
1 E. Main St.
Ephrata, PA 17522
No Phone Call Please!

When Quality Counts...

Count on Energy King for today's most advanced wood and coal furnaces. Uncompromising quality throughout makes Energy King solid fuel furnaces today's hottest value in central home heating.

- Forced or Automatic Draft Control—For responsive heating on demand
- Wall Thermostat Control—Regulates Energy King's powerful three-speed blower system
- Unique "V" Shaped Firepit—For complete combustion, generous fuel capacity and burn times of up to 10 hours
- Standard Shaker Grates—Create an ideal combustion environment for wood or coal
- Durable Steel Construction—With full firebrick lining
- Factory Prewired—For easy installation
- A Model for Every Home Heating Need—With heating capacities from 1,500 to 3,000 square feet, and BTUs from 115,000 to 175,000 per hour
- Full Five Year Warranty—Not prorated!



Model 145 Solid Fuel Furnace

- Wood and Coal Boilers also available
- See your Energy King furnace dealer today. You'll see why—when quality counts, more homeowners count on Energy King!



Distributed By:
WALTZ
ENTERPRISES, INC.
280 Earland Drive
New Holland, PA 17557
(717) 355-2267

Stop By And See Us At
AG PROGRESS DAYS
On W. 10th St.