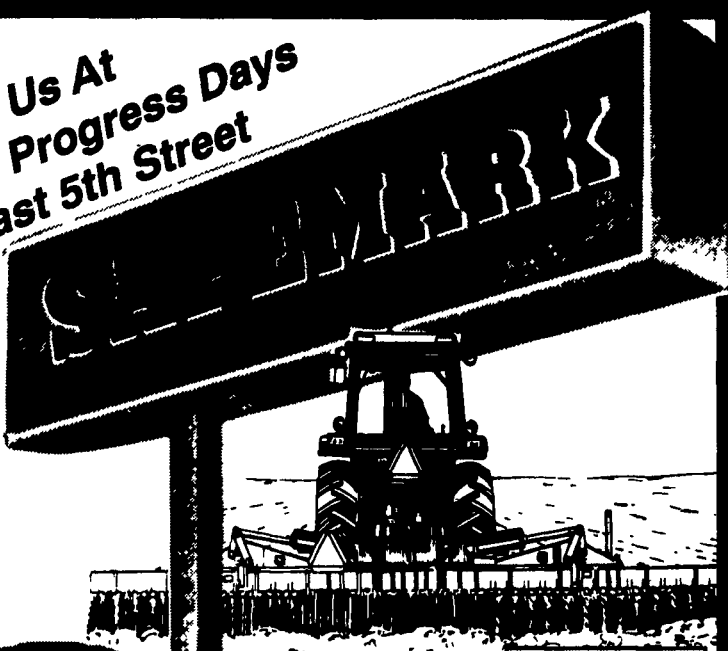




Prepare For HARVEST DAYS

See Us At
Ag Progress Days
East 5th Street



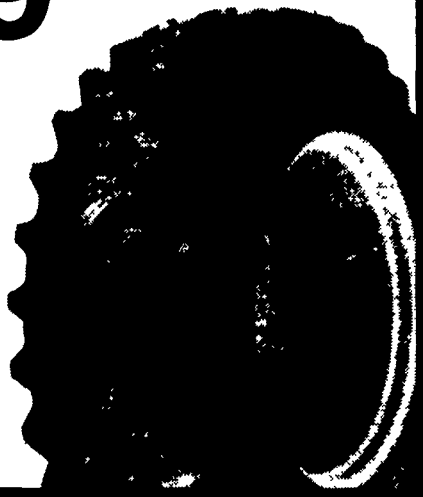
KELLY POWER MARK L/S RADIAL II

Radial performance at a significantly lower price.

\$349

15.5R38*
No Trade Needed

- New cavity shape for low carcass stress and long, narrow footprint.
- Belt package gives excellent bruise and puncture resistance.

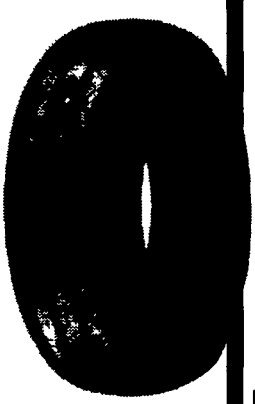


KELLY FRONT TRACTOR TIRES 4-RIB



| SIZE | PLY | PRICE |
|----------|----------|----------|
| 9.5L-15 | 8 Ply/TT | \$78.00 |
| 11L-15 | 8 Ply/TT | \$93.00 |
| 7.50x16 | 6 Ply/TT | \$69.00 |
| 10.00x16 | 8 Ply/TT | \$91.00 |
| 11.00x16 | 8 Ply/TT | \$105.00 |

FARM UTILITY WAGON TIRES



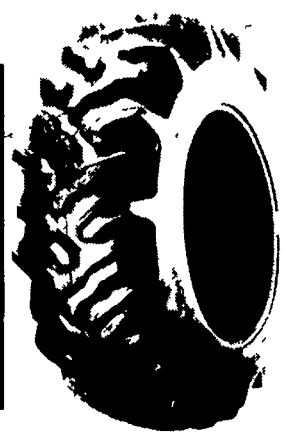
| SIZE | PLY | PRICE |
|---------|----------|---------|
| 9.5L14 | 8 Ply TT | \$47.00 |
| 7.60x15 | 6 Ply TT | \$44.00 |
| 9.5L15 | 8 Ply TT | \$48.00 |
| 11L15 | 8 Ply TT | \$49.00 |
| 12.5L15 | 8 Ply TT | \$65.00 |

SAFEMARK MULTI-ANGLE LB/SB

Long Bar/Short Bar Lug Design for Improved Drawbar Pull, Smoother Ride

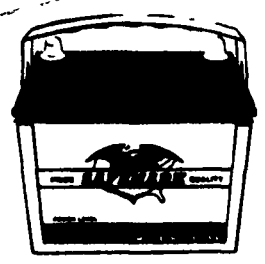
- Multi-Angle Lugs for Excellent Traction
- Full Size for Dual Mating with O.E. Tires
- Heavy Duty Rim Shield

| SIZE | PLY | PRICE |
|---------|-------|----------|
| 11.2-28 | 4 Ply | \$157.00 |
| 12.4-28 | 4 Ply | \$159.00 |
| 13.6-28 | 4 Ply | \$178.00 |
| 15.5-38 | 6 Ply | \$284.00 |
| 18.4-34 | 6 Ply | \$359.00 |
| 18.4-38 | 8 Ply | \$460.00 |



- | | |
|--|--|
| <p>Adams Mar-Bar Tire Service Hanover, PA 17331 (717) 633-6412</p> | <p>Lancaster Leola Tire Service Leola, PA 17540 (717) 656-2574</p> |
| <p>Biglerville Tire & Auto Biglerville, PA 17307 (717) 677-8338</p> | <p>Messick Farm Equip., Inc. Elizabethtown, PA 17022 (717) 387-1319</p> |
| <p>Blair Rhodes Farm Supply Williamsburg, PA 16893 (814) 632-2491</p> | <p>Rhodastar* Retreading Quarryville, PA 17566 (717) 786-2178</p> |
| <p>Bradford/Sullivan Histand's Farm & Home Service Rome PA 18837 (717) 744-2371</p> | <p>Lebanon Amtire Corp. Palmyra, PA 17078 (717) 838-5491</p> |
| <p>Bradford Isaac's Tire Sales Canton, PA 17724 (717) 673-8121</p> | <p>Farr Family Tire Palmyra, PA 17078 (717) 838-0151</p> |
| <p>Centre Dunkle & Grieb Centre Hall, PA 16828 (814) 384-1421</p> | <p>Lebanon Valley Implement Co., Inc. Richland, PA 17087 (717) 866-7518</p> |
| <p>Chester/Delaware Enfield Equipment Inc Oxford, PA 19350 (610) 932-8858</p> | <p>Lehigh Kermit K. Kistler Lynnport, PA 18066 (610) 298-2011</p> |
| <p>J&L Tire Service Chatham, PA 19318 (610) 869-0450</p> | <p>Joe's Battery & Tire Allentown, PA 18103 (610) 437-4961</p> |
| <p>S.G. Lewis & Sons West Grove, PA 19390 (610) 869-2214</p> | <p>Mifflin Miller-Lake, Inc. Belleville, PA 17004 (717) 935-2335</p> |
| <p>Stoltzfus Farm Service Cochranville, PA 19330 (610) 593-2407/2408</p> | <p>Northampton/Monroe Northampton farm Bureau Tatamy, PA 18085 (610) 759-3254</p> |
| <p>Clinton Dotterer Equipment, Inc. Mill-Hall, PA 17751 (717) 726-3471</p> | <p>Northumberland Rivendale Supply Watsontown, PA 17777 (717) 538-5521 (717) 742-7521</p> |
| <p>Columbia Steve Shannon Tire Co., Inc. Bloomsburg, PA 17815 (800) 343-TIRE</p> | <p>Schuylkill Charles Snyder, Inc. Tamaqua, PA 18252 (717) 386-5945</p> |
| <p>Rte. 487, Benton, PA 17814 (717) 925-2821</p> | <p>Somerset Maple City Tire Meyersdale, PA 15552 (814) 634-0545</p> |
| <p>Rt. 11 Danville, PA 17821 (717) 275-5506</p> | <p>Union Allen Hoover Repair Mifflinburg, PA 17844 (717) 966-3821</p> |
| <p>Cumberland Barrick Tire Sales Newville, PA 17241 (717) 776-5782</p> | <p>Mifflinburg Farm Supply, Inc. Mifflinburg, PA 17844 (717) 966-3114/3115</p> |
| <p>Dauphin Farr Family Tire Middletown, PA 17057 (717) 944-4001</p> | <p>Washington Canonsburg Supply Equipment Co., Inc. Canonsburg, PA 15317 (412) 748-2500</p> |
| <p>Franklin Forrester Farm Equip., LTD Chambersburg, PA 17201 (717) 263-0705</p> | <p>Wyoming J. Roberts & Son Tire Co. Meshoppen, PA 18630 (717) 833-5582</p> |
| <p>Stoneham's Waynesboro, PA 17268 (717) 782-3614</p> | <p>York Corn Hill Farm, Inc. Etters, PA 17319 (717) 938-2012</p> |
| <p>Bruce B. Gamble & Sons Concord, PA 17217 (717) 349-2670</p> | <p>NEW JERSEY Farmer's Brokerage & Supply, Inc. Allentown, NJ 08501 (609) 259-7324</p> |
| <p>Fulton Clugston Farm Equipment Needmore, PA 17238 (717) 573-2215</p> | |
| <p>Greene Burns Tire Service Waynesburg, PA 15370 (412) 627-8263</p> | |

BATTERY BARGAIN



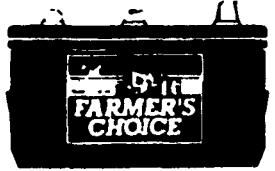
-Dependable performance in all weather conditions

\$47

5-24 650 CA

- Unique Bill board vent appearance
- Higher cranking than conventional batteries
- Sizes to fit most domestic and import cars and light trucks

FARM TRACTOR BATTERY



\$66

FC-30H 665 CA

- Rugged high impact case and cover for vibration resistance
- Increased starting power
- Built to last season after season
- Made in USA

A Proud Tradition of Quality, Value and Service

SAFEMARK

Division of Pennsylvania Farm Bureau

- QUALITY
- SERVICE

- DEPENDABILITY
- ECONOMY

CALL 1-800-PFB-TIRE For Dealer Nearest You

NOW SERVING NEW YORK, NEW JERSEY & CONNECTICUT