

**Estimated Daily Livestock Slaughter**

Under Federal Inspection

Aug. 10, 1994

	CATTLE	CALVES	HOGS	SHEEP
WEDNESDAY (EST)	121,000	4,000	347,000	18,000
WEEK AGO (EST)	120,000	5,000	330,000	17,000
YEAR AGO (EST)	124,000	5,000	325,000	19,000
WEEK TO DATE (EST)	368,000	14,000	985,000	49,000
SAME PD LT WK (EST)	359,000	15,000	911,000	47,000
SAME PD LT YR (ACT)	368,000	13,000	954,000	57,000

PREVIOUS DAY ESTIMATED TUESDAY STEER AND HEIFER 102,000, COW AND BULL 23,000.

**Four States Livestock**

Hagerstown, Md. Aug. 10, 1994

Report supplied by Auction

SLAUGHTER COWS: 60 HEAD, STEADY PRICES. UTILITY 43.00-47.50; HIGH DRESSING TO 48.75; CANNERS 40.00-44.00; SHELLY 40.00 DOWN.

BULLS: YG#2 1100-1400 LBS. 53.00-55.00; L CH. BULLOCKS 1000-1220 LB. TO 56.75.

FED STEERS: FEW CHOICE 1100-1300 LBS. 65.00-68.75; L CHOICE 1000-1150 LBS. 61.00-65.50; SELECT 58.00-62.50.

FED HEIFERS: NO CHOICE SELECT 900-1150 LBS. 58.00-59.25.

VEAL CALVES: 155 HEAD. CH-PR 200-300 LBS. 109.00-113.00; GOOD-CHOICE 77.00-90.00; CULLS 85-110 LBS. 55.00-63.00; 50-80 LBS. 45.00-58.00.

FARM CALVES: 15.00-20.00 HIGHER. HOLSTEIN BULLS #1 95-120 LBS. 115.00-140.00; 80-90 LBS. 75.00-110.00; HOLSTEIN HEIFERS #1 85-120 LBS. 190.00-215.00; #2 75-100 LBS. 140.00-180.00; BEEF X BULLS AND HEIFERS TO 137.00; 1 @ 152.00.

BUTCHER HOGS: US#1&3 215-260 LBS. TO 41.75; 265-280 LBS. TO 40.00.

SOWS: 300-400 LBS. 29.00-32.00.

BOARS: 350-600 LBS. TO 26.25.

STOCK CATTLE: 82 HEAD. STEERS MEDIUM AND LARGE FRAME 300-500 LBS. 80.00-89.00; 500-700 LBS. FEW TO 74.00; 700-900 LBS. 62.00-68.50; 900-1050 LBS. 63.00-68.00.

HEIFERS: 300-500 LBS. 67.00-77.00.

FEW TO 81.00; 500-700 LBS. 57.00-66.00.

BULLS: 300-500 LBS. 70.00-83.50; 800-1050 LBS. 54.00-63.00.

DAIRY REPLACEMENTS: LARGE SPRINGERS 1050-1075 LBS.; MEDIUM 725.00-900.00; FEW FRESH 700.00-900.00; 2 HOL. BULLS 675.00 & 825.00.

LAMBS: CHOICE 100-125 LBS. 71.00-76.00; 70-95 LBS. 73.00-76.00; GOOD 80-100 LBS. 66.00-69.00.

SHEEP: 24.00-32.00.

GOATS: 2 LG. NANNIES 79.00 & 84.00.

PIGS & SHOATS: BY THE HEAD FROM TESTED HERDS 20-35 LBS. 24.00-31.00.

NEXT WED., AUG. 18 -SPECIAL DAIRY CATTLE CONSIGNMENT SALE. SOME GOOD BIG SPRINGERS PROMISED ALREADY.

**New Holland Horses**

New Holland Sales Stables  
New Holland, PA

Monday, Aug. 8, 1994

Report Supplied By Auction

219 HEAD. STEADY STRONGER. DRIVING HORSES 485.00-800.00. RIDING HORSES 495.00-975.00. REGISTERED RIDING 700.00-1800.00.

KILLERS: 1 AT 1000.00; HEAVY WEIGHTS 675.00-810.00, LIGHT WEIGHTS 430.00-575.00.

PONIES: 135.00-375.00.

LARGE PONIES 430.00-475.00.

COLTS 150.00-340.00.

**Lebanon Valley Livestock**

Fredericksburg, PA

Tuesday, August 9, 1994

Report supplied by Auction

STEERS: 25. CHOICE STEERS: 1135-1210 LBS. 59.50-63.25; HOLSTEIN CHOICE STEERS: 1315-1630 LBS. 58.00-60.25; SELECT 1215-1370 LBS. 54.50-57.25; STANDARD 1110-1280 LBS. 50.25-52.50.

COWS: 99 HEAD. BREAKING UTILITY AND COMMERCIAL 46.75-49.25; CUTTER AND BONING UTILITY 44.00-46.75; CANNER AND LOW CUTTER 41.00-43.25; SHELLS 32.50 DOWN.

BULLS: 8 HEAD. YG#1 1420-1805 LBS. 56.75-59.25; YG#2 1535 LBS. 53.50.

CALVES: 172 HEAD. 75-105 LBS. 40.00-50.00; STANDARD 75-95 LBS.

30.00-35.00; UTILITIES 45-60 LBS. 25.00-35.00.

FARM CALVES: #1 HOLSTEIN BULLS 100-120 LBS. 110.00-132.00; #2 HOLSTEIN BULLS 85-90 LBS. 65.00-77.00; #1 HOLSTEIN HEIFERS 100-125 LBS. 152.00-165.00; #2 85-100 LBS. 100.00-147.00.

BEEF BULL X HEIFER CALVES: 85-100 LBS. 80.00-110.00.

HOGS: 64 HEAD. US#1&2 235-255 LBS. 41.35-42.50; US#2-3 237-277 LBS. 40.00-40.75.

SOWS: 44 HEAD. #1-3 480-555 LBS. 29.00-32.25; #2-3 350-445 LBS. 28.75-30.50; 295-320 LBS. 27.50-29.50.

BOARS: 4 HEAD. 720-885 LBS. 27.00-27.50; 370-460 LBS. 24.50-26.50.

LAMBS: 5 HEAD. 65-105 LBS. 64.00-68.00.

**Front Royal Horse Sale**

Front Royal, Va.

Saturday, August 6, 1994

111 HEAD. SOLD BY THE HEAD, ALL WEIGHTS ESTIMATED.

RIDING HORSES, SERVICEABLE AGE: AVERAGE TO GOOD QUALITY, 925-1175 LBS. 510.00-735.00; 800-900 LBS. 385.00-500.00.

BETTER QUALITY: 950-1175 LBS. 820.00-1150.00, 1 @ 1350.00; 800-900 LBS. FEW 570.00-660.00.

EXCELLENT QUALITY: 1175 LBS. 1 @ 2325.00.

RIDING PONIES: SMALL-260.00-400.00; LARGE- 415.00-530.00.

LOOSE HORSES: AVERAGE TO GOOD FLESH, 925-1175 LBS. 515.00-750.00; 800-900 LBS. 430.00-535.00; 1200-1300 LBS. 2 @ 815.00-940.00.

**POLE or STEEL**



**YOU NEED A BUILDING!**

Let's Talk About It! See Us At East 5th Street

During Ag Progress Days

- 20 YEARS EXPERIENCE
- FOUNDATION CREWS
- ERECTION CREWS

WE HAVE THE RIGHT BUILDING TO FIT YOUR NEEDS!

I can't see you at the Farm Show but I'd like to know more about buildings.

NAME \_\_\_\_\_  
ADDRESS \_\_\_\_\_  
CITY \_\_\_\_\_ ST. \_\_\_\_\_  
ZIP \_\_\_\_\_ PH \_\_\_\_\_

- Please send me literature  Please call me for an appointment



PHONE 717-432-9738  
FAX NO. 717-432-8389

1248 SOUTH MOUNTAIN RD., DILLSBURG, PA 17019

**WHEAT**

Tyler - Coker 916, 9803  
Cardinal - Wakefield - Freedom  
Dynasty - Early Agri 863 Bearded - Pontiac - Sawyer

SEEDS WILL COME FROM VARIOUS STATES

**SMALL GRAINS**

Wysor - Pennco

**TIMOTHY, TORO and CLIMAX TIMOTHY**

**ALFALFA**  
84 VWAP VERNAL  
Wetfoot 94MPR

BALER TWINE

DANCO RYE

FERTILIZER

BALBOA TYPE RYE

WHOLESALE & RETAIL

**BOYDELL FARMS**

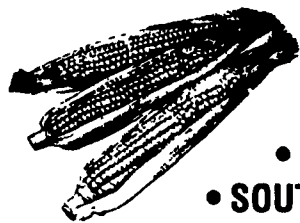
302 Iona Road, Lebanon, PA 17042  
Phone: 717-272-8943

**PRODUCE AUCTION**

MONDAY THRU SATURDAY

STARTING AT 10:00 AM

- SWEET CORN
- CANTALOUPE
- WATERMELONS • TOMATOES
- SOUTHERN PEACHES • NECTARINE



MUMS FLOWERS STARTING SOON!

FARMERS TAKE NOTICE

OUR COMMISSION IN THE DRIVE-IN LINE IS..... **5%**  
Large lot only during August 1994



*Lienbach Produce Auction*

1120 Ritner Hwy. Route 11  
Shippensburg, PA 17527

PAUL W. LEINBACH  
MANAGING DIRECTOR

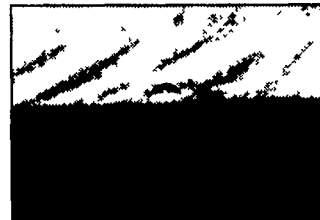
717-532-5511  
800-346-2334

**SUPER TARP™**

PATENTED SLEEVE STYLE TIE DOWN METHOD



A QUALITY PRODUCT AT A REASONABLE PRICE



See us at...  
AG PROGRESS DAYS  
on West 10th Street

SLEEVE GOES FULL WIDTH OF THE SUPER TARP™ SO PIPE CAN BE USED TO TIE DOWN TARP

- 5 to 7 seasons of service (when secured properly)
- Triple sewn seams
- Silver on outside to reflect sunlight
- Long life UV fabric
- One of the heaviest materials on the market
- Can be used for hay, straw & peanut bales

**ADVANCED SCIENTIFICS, INC.**

RD 2, Box 52, Millersburg, PA 17061

1-800-724-4158 • 1-717-692-2171

Dealers Wanted In Many Areas