

Pa. Grain

Monday, August 1, 1994
Report supplied by PDA
COMPARED TO LAST MONDAY'S MARKET FOR SOUTHEASTERN, CENTRAL, AND SOUTH CENTRAL PA: CORN STEADY TO .15 INSTANCES .25 LOWER, WHEAT STEADY TO .10 HIGHER, BARLEY MOSTLY STEADY, OATS STEADY TO .15 LOWER, SOYBEANS UNEVEN, MOSTLY STEADY TO WEAK, EAR CORN STEADY TO 5.00 LOWER.

SOUTHEASTERN PENNSYLVANIA
CORN NO. 2-Y RANGE 2.50-2.70, AVERAGE 2.61, CONTRACT FOR HARVEST 2.22-2.37; WHEAT NO. 2 RANGE 3.02-3.35, AVERAGE 3.21; BARLEY NO. 3 RANGE 1.60-1.95, AVERAGE 1.75; OATS NO. 2 RANGE 1.35-1.60, AVERAGE 1.49; SOYBEANS NO. 1 RANGE 5.70-6.14, AVERAGE 5.85, CONTRACT FOR HARVEST 2.07; EAR CORN RANGE 70.00-90.00, AVERAGE 79.50.

SOUTH CENTRAL PENNSYLVANIA
CORN NO. 2-Y RANGE 2.65-2.80, AVERAGE 2.71; WHEAT NO. 2 RANGE 2.85-3.10, AVERAGE 2.97; BARLEY NO. 3 RANGE 1.70-1.90, AVERAGE 1.78; OATS NO. 2 RANGE 1.40-1.50, AVERAGE 1.48; SOYBEANS NO. 1 RANGE 5.80-6.15, FEW REPORTED 5.53, AVERAGE 5.88; EAR CORN RANGE 70.00-84.00, AVERAGE 77.00.

SOUTHEASTERN, CENTRAL & SOUTH CENTRAL SUMMARY
CORN NO. 2-Y RANGE 2.50-2.80, AVERAGE 2.65; WHEAT NO. 2 RANGE 2.90-3.35, AVERAGE 3.11; BARLEY NO. 3 RANGE 1.60-1.95, AVERAGE 1.75; OATS NO. 2 RANGE 1.20-1.70, AVERAGE 1.45; SOYBEANS NO. 1 RANGE 5.60-6.15, AVERAGE 5.85; EAR CORN RANGE 66.00-90.00, AVERAGE 70.11.

OATS NO. 2 RANGE 1.20-1.70, FEW REPORTED .98, AVERAGE 1.36; SOYBEANS NO. 1 RANGE FEW REPORTED 5.75, AVERAGE 5.75; EAR CORN RANGE 60.00-67.00, AVERAGE 63.50. MONTH AGO

CORN NO. 2-Y 2.96; WHEAT NO. 2 3.09; BARLEY NO. 3 1.77; OATS NO. 2 1.57; SOYBEANS NO. 1 6.47; EAR CORN 84.00.

YEAR AGO
CORN NO. 2-Y 2.68; WHEAT NO. 2 2.99; BARLEY NO. 3 1.60; OATS NO. 2 1.46; SOYBEANS NO. 1 6.95; EAR CORN 70.00.

National Grain Market

St. Joseph, Mo.
Wednesday, August 3, 1994
DAILY NATIONAL GRAIN SUMMARY WHEAT PRICES FINISHED MIXED, LOWERED DUE TO DECLINING CORN PRICES BUT LIGHT SUPPORT WAS NOTED FROM OVERNIGHT EXPORT WHEAT SALES. GOOD WEATHER AND RAINFALL IN CORN BELT AREAS LOWERED CORN AND BEAN PRICES. WHEAT MIXED. CORN 2 TO 3 CENTS LOWER. SORGHUM 2 TO 4 CENTS LOWER. SOYBEANS 2 TO 4 CENTS LOWER. GOOD EXPORT DEMAND CONTINUED FOR WHEAT AND POSSIBLE CHINA BUSINESS STRENGTHENED WHEAT PRICES. LOWER CORN AND BEAN PRICES PUT SOME PRESSURE ON WHEAT TRADE. RAIN IN MIDWEST AREAS THIS WEEK AND CONTINUED EXPECTATIONS FOR RECORD YIELDS DROVE CORN AND SOYBEAN PRICES SLIGHTLY LOWER. SLOW EXPORT SALES ADDED TO WEAKNESS.

EXPORT NEWS: CCC FOR DONATION TO ARMENIA, 100,000 TONNES U.S. HARD RED WINTER WHEAT FOR AUG/SEP SHIPMENT.
DATE CHANGE YEAR AGO TRUCK BIDS: 08/03/94 08/02/94 08/04/93 WHEAT: KANSAS CITY 3.52-3.53 DN 1-2 3.21-3.23 MINNEAPOLIS 3.78 1/2 UP 7 3/4 4.15 3/4 PORTLAND 3.52-3.53 UP 2-1 3.40-3.43 ST. LOUIS 3.14-3.17 DN 1 3.00-3.03.

CORN, U.S. NO. 2 YELLOW: KANSAS CITY 2.23-2.25 DN 3 2.43-2.45 MINNEAPOLIS 2.10 1/4 DN 2 1/2 2.21 SO. IOWA 2.17-2.20 DN 2 2.26-2.30 OMAHA 2.13 DN 3 2.32-2.33.
SOYBEANS, NO. 1 YELLOW: KANSAS CITY 5.65-5.66 DN 3-4 7.01-7.06 MINNEAPOLIS 5.57 1/2 DN 2 1/2 6.73 1/4 SO. IOWA 5.71-5.74 NC-DN 2

6.84-6.85 C. ILL. PROCESSORS 5.68 1/2-5.76 1/2 DN 1/2-2 1/2 6.92 1/4-7.04 1/4.

*TRUCK BIDS FOR KANSAS CITY, US NO. 1 HARD RED WINTER WHEAT, ORDINARY PROTEIN. MINNEAPOLIS, US NO. 1 DARK NORTHERN SPRING WHEAT, 14% PROTEIN. PORTLAND, NO. 1 SOFT WHITE WHEAT, ST. LOUIS, NO. 2 SOFT RED WINTER WHEAT.

FUTURES CLOSE: KANSAS CITY (SEPT) WHEAT 3.43 3/4 DN 1 3.09 MINNEAPOLIS (SEPT) WHEAT 3.38 1/2 DN 2 1/4 3.15 3/4 CHICAGO (SEPT) WHEAT 3.34 DN 1 3/4 3.10 1/2 (SEPT) CORN 2.15 1/4 DN 2 1/2 2.41 (DEC) CORN 2.19 3/4 DN 2 2.46 1/4 (NOV) SOYBEANS 5.59 1/2 DN 1/2 6.96 1/4.

EXPORT: BARGE OR RAIL, PORT OF NEW ORLEANS OR NORTH TEXAS GULF. NO. 1 HARD RED WINTER WHEAT ORDINARY PROTEIN 3.81 3/4-3.82 3/4 DN 1-NC 3.51 NO. 2 SOFT RED WINTER WHEAT 3.38-3.40 DN 3/4-1 3.32 1/2-3.33 1/2 NO. 2 YELLOW CORN 2.40-2.40 1/4 DN 2 3/4 2.56-2.58 1/2 NO. 2 YELLOW SORGHUM RAIL 4.28 UP 3 BARGE 4.32 DN 3 4.42-4.63 NO. 2 YELLOW SOYBEANS 5.95 1/2-5.98 DN 3 1/2-4 1/2 7.20-7.21 BIRD.
THIS REPORT A SERVICE OF U.S. DEPARTMENT OF AGRICULTURE, LIVESTOCK AND GRAIN MARKET NEWS, ST. JOSEPH, MISSOURI.

Delmarva Broiler/Fryer Market

Wednesday, August 3, 1994
Movement of ready-to-cook whole birds varied, but was often noted as no better than moderate and generally below first-of-the-month expectations. Offerings were no more than adequate on under 3 pound sizes; fully adequate on the larger sizes. Live supplies were moderate; weights varied in a full range, but were more readily available on the heavier sizes. Processing schedules were very heavy. Some downtime was projected tomorrow due to light weights. Less than trucklot asking prices

were unchanged at 52 to 62 cents. Trade sentiment was about steady. Parts were fully adequate with leg quarters noted in best balance.

ESTIMATED SLAUGHTER OF BROILER/FRYERS IN DELMARVA (000)

ESTIMATED ACTUAL AVG. WEIGHT ACTUAL AVG. WEIGHT 08/03 08/01 08/01 07/27 07/25 2,492 2,199 4.70 2,344 4.64.

*BROILER/FRYER CURRENT NEGOTIATED PRICES FOR IMMEDIATE DELIVERY INCLUDES MOSTLY MULTIPLE-DROP SHIPMENTS OF BRANDED AND WING TAGGED TO NEW YORK CITY FROM DELMARVA BRANDED U.S. GRADE A RANGE 49-60 WEIGHTED AVERAGE 53.10 NO. OF BOXES 11,560 *9 of 9 plants reporting.

Northeast Broiler/Fryer Parts

Wednesday, August 3, 1994
Trucklot buying interest was about moderate. Several dealers were concerned that business was developing at a slower pace than they had hoped for. Offerings were usually in balance with the limited needs. The market tone was generally steady. PRICES PAID PER POUND, ICE PACKED AND CO2 PACKED BROILER/FRYER PARTS, DELIVERED TO FIRST RECEIVERS IN POOL TRUCKLOT AND TRUCKLOT QUANTITIES.

ITEM CURRENT NEGOTIATED TRADING* BREAST - B/S (W & W/O TENDERS) 195-200 BREAST - WITH RIBS 80-81 BREAST - LINE RUN 80 LEGS 44-46 LEG QUARTERS (BULK) 27-28 DRUMSTICKS 42-43 THIGHS 38-39 WINGS (WHOLE) 49-50 BACKS AND NECKS (STRIPPED) 10-12 LIVERS (5 POUND TUBS) 20-25 GIZZARDS (HEARTS) 30-35 INCLUDES NEW YORK CITY METROPOLITAN AREA, NORTHERN NEW JERSEY, MASSACHUSETTS, CONNECTICUT.

RHODE ISLAND, AND PENNSYLVANIA (NORTHEAST OF HARRISBURG). * TODAY'S NEGOTIATED SALES AS OF 11:30 A.M.

Hackettstown Poultry & Egg

Hackettstown, N.J.
Report Supplied by Auction Tuesday, Aug. 2, 1994
Report Supplied by Auction
HEAVY FOWL .40-1.60.
LEGHORN FOWL .40-.55.
MIXED FOWL .30.
ROASTERS .35-.55.
FRYERS .10-.40.
GEESE .20-.35.
BANTAMS .20-1.60.
ROOSTERS .60-.70.
BUNNIES EACH 1.25-3.25.
DUCKS .45-1.25.
RABBITS .15-.90.
PIGEONS 1.00-1.20.
GUINEAS 1.70.

WHITE EGGS: EXTRA LARGE & JUMBO .64-.80; LARGE .40-.70; MEDIUMS .36-.50.
BROWN EGGS: EXTRA LARGE & JUMBO .61-.80; LARGE .40-.64; MEDIUM .36-.41.



FOR SALE - MANURE

20-25 ton trailer loads
\$6 to \$8/per ton depending on distance

VINTAGE SALES STABLES, INC.
Paradise, PA 17562
215-458-5060 - 717-442-4181
L. Robert Frame, President

VINTAGE SALES STABLES, INC.

Paradise, PA
3 Possum belly tractors & trailers to haul cattle. From Virginia to Penna. Contact us before going down.
Call day or night
717/768-8204 Office
215/458-8518,
215/458-5060 Home
L. Robert Frame



Diffenbach Auction Inc.

100 West Jackson Street • Box 186 • New Holland, Pennsylvania 17557
Office: (717) 355-7253 • FAX: (717) 355-9547

HAY & GRAIN SALE EVERY MONDAY - 10:00 A.M.

FRI.	AUG. 12	FARM EQUIP., TRACTORS & SUPPLIES	9:00 A.M.
WED.	SEPT. 7	WINROSS TRUCKS & TOYS	6:30 P.M.
FRI.	SEPT. 9	FARM EQUIP., TRACTORS & SUPPLIES	9:00 A.M.
TUES.	SEPT. 20	QUILT, CRAFT & BUGGIES	9:00 A.M.
WED.	SEPT. 21	QUILT & CRAFT	9:00 A.M.

EQUIPPED FOR AN AUCTION AT YOUR PLACE OR OURS
ALAN DIFFENBACH AUCT. - AU2258-L

Agricultural Producers

Today's ag-markets are extremely volatile and likely will remain that way for the balance of this marketing year.

Let us help...

- Cash Grain Merchandising
- Cash Feed Stuff Sales (including cottonseed and hominy)
 - Grain Forward Pricing
 - Livestock Forward Pricing
- Full Service Futures Brokerage
- Market Consulting
- Rail-to-truck Facilities at Palmyra & Greencastle



IN USA - 1-800-722-6246
LOCAL - 1-717-838-7050

NEW HOLLAND SALES STABLES INC. THE ACTION AUCTION

LIVESTOCK IS OUR ONLY BUSINESS

MONDAY

SLAUGHTER HOGS
EARLY BIRD HOG SALE
7:30 A.M.



Sell Your Hogs At New Holland Sales Stables, Inc. See them weighed, sold and pickup your check.

10:00 A.M.
HORSES
MULES



1:30 P.M.
BEEF SALE
SHEEP
GOATS
CALVES



WEDNESDAY

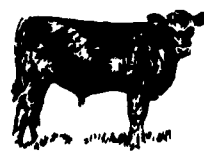
HEIFER SALE 11:00 A.M.
COW SALE 12:00 NOON



We have the usual run of 50 to 100 Heifers, all ages. Loads of fresh cows and springers from our regular shippers. Also some local fresh cows and springers.

THURSDAY

Beef Auction 10:00 A.M.



BULLS, STEERS, BEEF COWS

1:00 P.M.
STOCKERS & FEEDERS



11:30 A.M.

SHEEP
GOATS
CALVES



1:30 P.M.
FEEDER PIG SALE



Pigs are accepted after 6:30 A.M. Stalls graded from 8 to 12 Dairy Barn and Feeder Pig Barn are cleaned and disinfected weekly for your protection.

NEW HOLLAND SALES STABLES, INC.
12 Miles East of Lancaster Off Route 23, New Holland, Penna.

MANAGERS
Norman & David Kolb - 717-397-5538
Field Representatives
Luke Eberly - 215-267-8608 738-1865
Homer Eberly - 215-267-3047
Ron Ranck - 717-656-9849

Sale Barn Office Manager
Roger Floyd - 717-354-4341
FAX #717-355-0708

Order Buyer
Paul Good - 215-445-8662