



Ida's Notebook

Ida Risser

Some years we have a very dry summer but this year it has been quite wet in our area. This is fine for growing flowers and vegetables. But, you should see the fine specimens of weeds in our garden. The red root is so sturdy that it is difficult to pull and grass grew up through my one strawberry row. Oh boy, did I sweat to clean that

100-foot row.

Talking of strawberries, even in August we are picking some from a row of everbearing ones. It is a nice change from peaches and blueberries. We've eaten our own watermelon, but this year, I think there will be more cantaloupes than we can handle.

My husband planted about six

different kinds of sweet corn and so the season will be stretched out over a two-month period. The red raspberries are finished bearing for now but they will have a second crop this fall.

Some lilies that I planted in May have only now come up. In fact, I almost forgot where I put them along our rail fence. However, there were two kinds that I left in the ground over winter. One was an Easter lily that just bloomed now and another is called "Stargazer" and it has a very large, fragrant bright pink blossom.

This year my vegetable garden has several rows of flowers that are blooming just now. The cosmos are the tallest, next comes the big zinnias and the shortest are the asters and nasturtiums. The row of basil has such large plants that I've been able to share with sever-

al neighbors. In fact, when folks take their daily walk past our house, I'll often ask if they can use a head of cabbage. You see, when I planted seed, it all came up and

the transplanted cabbage is all ready for use at the same time. Most of our neighbors do not have gardens.

Auction Benefits Clinic For Special Children

LEOLA (Lancaster Co.) — Donations of saleable items are again requested for the benefit auction for the Clinic for Special Children. The auction will be Sept. 17 at the Leola Produce Auction site on Brethren Church Road, Leola. All proceeds will go to the clinic, a non-profit organization with Dr. Holmes Morton as the attending physician.

Dr. Morton has taken a special

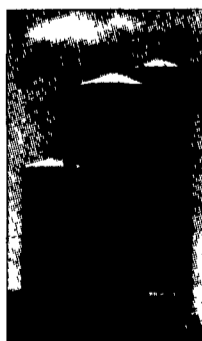
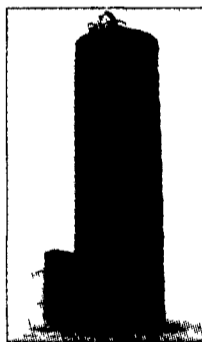
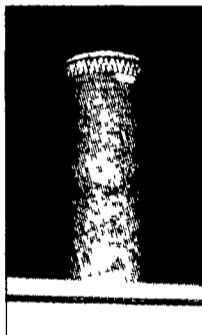
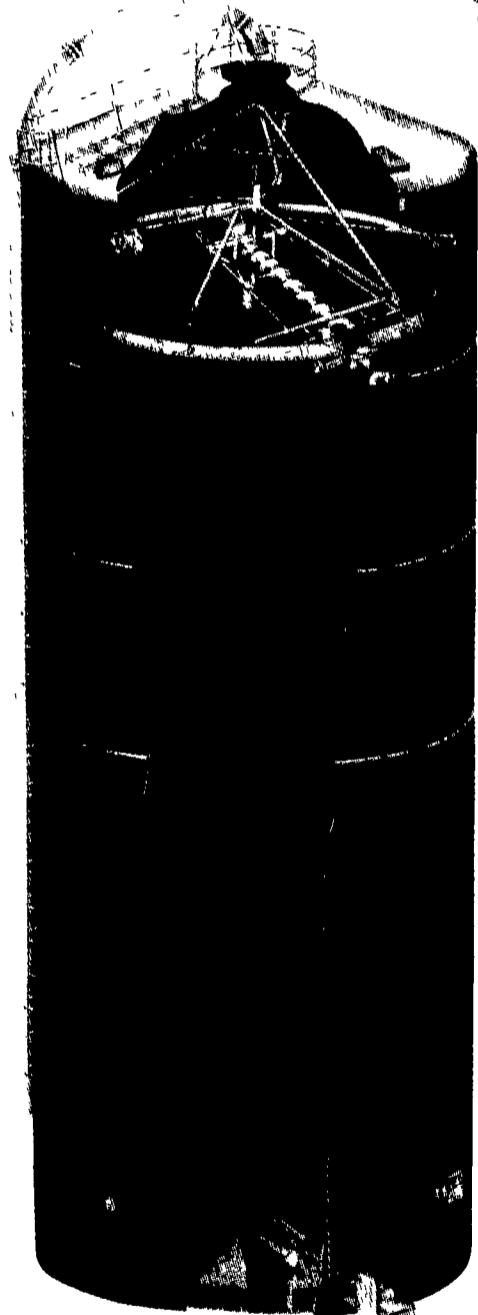
interest in several hereditary diseases, and by testing all newborn babies of high-risk parentage, he has been able to prevent irreversible brain damage of many of these young children. The same tests that are at the clinic for \$35.00 would cost \$350.00 to \$400.00 at major medical centers, making these tests too expensive for many parents. The costs of owning and operating this laboratory equipment are huge. But with the funds from this annual auction, the clinic has been able to offer this service to their clients at a price that is affordable to the average parent.

Donations can be made to the committee persons. If you have items that should be on the sale bill, you need to make contact by Wednesday, Aug. 12. For more information contact Leonard Hurst, Lititz. Phone: (717) 626-4863.

Big Jim[®] B.U.C.S.[™]



The Solution to Bottom Unloader Problems... from the Silo Unloader Expert



Your Jamesway Dealer has loads of information—including an in-depth video—about Big Jim B.U.C.S., the Bottom Unloader Conversion System by Jamesway. See how you can get faster unloading, increased capacity, better quality feed and reduced maintenance in your steel, poured concrete or concrete stave silo. You can even tour a farm with a B.U.C.S. installation at work. So call your Jamesway Dealer now and get the expert advice you need!



The Silo Unloader Experts

See These Dealers For Details Now...

HOOVER EQUIPMENT
Tyrone, PA 16686
814-684-1777

WALNUT BARN EQUIPMENT
Port Royal, PA
717-436-9429

MARYLAND GLADHILL TRACTOR MART
Frederick, MD 21701
301-663-6060

MD & VA MILK PRODUCERS ASSOC.
Frederick, MD 21701
301-663-6552

NEW JERSEY GEORGE COLEMAN
Elmer, NJ 08318
609-358-8528

ROVENDALE AG & BARN EQUIPMENT
Watson, PA 17777
717-538-9564
OR 717-742-4226

GNEGY SURGE SERVICE
Washington, PA 15301
412-222-0444

JAMES L. HOSTETTER
McVeytown, PA 17051
717-899-6386

HARRY TROOP
Cochranville, PA 19335
215-593-6731

STAR SILOS
Myerstown, PA 17067
717-866-5708

SOMERSET BARN EQUIPMENT
Somerset, PA 15501
814-445-5555

PENNSYLVANIA ERB & HENRY EQUIPMENT INC.
New Berlinville, PA 19545
215-367-2169

LAPP'S BARN EQUIPMENT SALES & SERVICE
Gap, PA 17527
717-442-8134

SOLLENBERGER SILOS CORP.
Chambersburg, PA 17201
717-264-9588
PRINGLES FEED STORE, INC.
Greenville, PA 16125
412-588-7950

ROPE IN SOME EXTRA CASH!

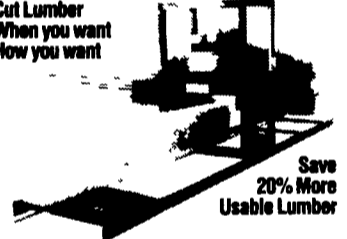
Advertise With A Lancaster Farming CLASSIFIED AD...

Phone: 717-394-3047 or 717-626-1164



Kasco Portable Band Saw Mill

Cut Lumber When you want How you want

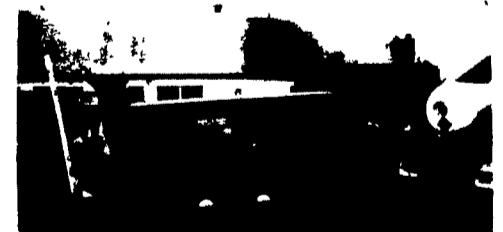


Save 20% More Usable Lumber

- 24" and 30" diameter capacities
- Power-thru cut or manual
- Market your own lumber
- Prices start at \$5550 plus freight

KASCO R. R. #3 · Box 393
Shelbyville, IN 46176 · (317) 398-7973

SOYBEAN ROASTING ON YOUR FARM



FULL-FAT ROASTED SOYBEANS For Maximum Feeding Value

- High energy, by-pass protein and palatability
- Toxic enzymes and molds destroyed
- Peak performance with retained oil and lecithin
- Improved Total Digestible Nutrients
- Ultimate rich peanutty flavor and aroma
- Dired as roasted
- Roast own grown beans - Avoid trucking and docking
- Economical and efficient for lower feed costs
- Ready for use or storage

Custom Roasting in PA and Surrounding States

David N. Groff
RD 3 Lewisburg, PA
(717) 568-1420

Schnupp's Grain Roasting, Inc.
RD 6 Lebanon, PA
1-800-452-4004
717-865-8611

Horst Grain Roasting
3040 Penns Grove Rd.
Lincoln Univ., PA 19352
(Chester Co.)
(610) 869-8834

Roast-M-Matic Grain Roasting Sales-Service Custom Work
Roast-Cool Unit Available