

FOCUS



Dixie L. Burris, Membership Development,
Call 1-800-1DHIA-TONIT for information.
Pennsylvania Dairy Herd Improvement Association
DHIA Service Center, Orchard Road, University Park, PA 16802

How Does Your Herd Compare?

STATE COLLEGE (Centre Co.) — These data are calculated using information pulled from Pennsylvania DHIA's mainframe computer each week. It is a one-week summary representing approximately one-fourth of the herds on test, as they are tested monthly.

These data are valuable from a business management standpoint and can be used for comparing your operations to the averages from about one-fourth of the herds across the state.

DHIA Averages for all herds processed between 7/16/94 and 7/23/94

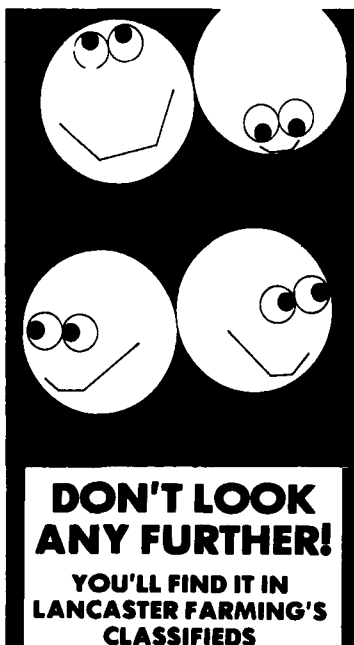
Number of Herds Processed	1,091
Number of Cows Processed	68,679
Number of Cows Per Herd	62.9
Milk Per Cow (Lbs)	18,689
%-Fat	3.69
Fat Per Cow (Lbs)	691
%-Protein	3.19
Protein Per Cow (Lbs)	597
Average Days in Milk Per Cow	319
*Value for CWT Milk(\$)	13.29
*Value for CWT Grain(\$)	7.94
*Value for CWT Hay(\$)	4.25
*Value for CWT Silage(\$)	1.55
*Value for Pasture Per Day(\$)	.30
*Value for Milk Per Cow Per Year(\$)	2,484
*Feed Consumed Per Cow Per Year(Lbs)	
A: Grain	7,303
B: Hay	2,197
C: Silage	14,764
D: Day Pasture	57
*Feed Cost Per Cow Per Year(\$)	
A: Grain	579
B: Hay	93
C: Silage	229
D: Pasture	17
*Total Feed Cost Per Cow Per Year(\$)	920
*Income Over Feed Costs Per Year(\$)	1,564
*Grain to Milk Ratio	1:2.5
*Feed Cost Per CWT Milk(\$)	4.92
Avg Level For 987 SCC Herds	425,415

*Member-generated figures

Average Farm Feed Costs For Handy Reference

To help farmers across the state to have handy reference of commodity input costs in their feeding operations for DHIA record sheets or to develop livestock feed cost data, here's this week's average costs of various ingredients as compiled from regional reports across the state of Pennsylvania. Remember these are averages so you will need to adjust your figures up or down according to your location and the quality of your crop.

Corn, No. 2y - 2.74 bu. 4.90 cwt.
Wheat, No. 2 - 2.98 bu. 4.97 cwt.
Barley, No. 3 - 1.72 bu. 3.68 cwt.
Oats, No. 2 - 1.48 bu. 4.60 cwt.
Soybeans, No. 1 - 5.89 bu. 9.84 cwt.
Ear Corn 74.65 ton 3.73 cwt.
Alfalfa Hay - 103.25 ton 5.16 cwt.
Mixed Hay - 100.00 ton 5.0 cwt.
Timothy Hay - 102.50 ton 5.13 cwt.



Walker Wins York 4-H

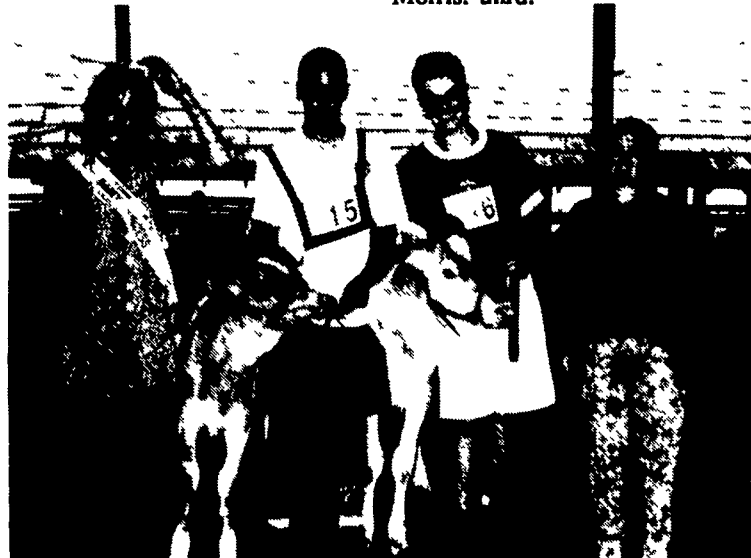
(Continued from Page A36)

was the uncontested winter yearling, Spruce Hill RC Bubbles, exhibited by Heather Crowl, Airville.

In the showmanship Cloverbud age division, for beginning exhibitors, Nicole Marks was first, Joseph Hushon, second, and Kimberly Pomraning, third. Top three

junior division winners were Angie Beshore, first, over Jacob Hushon in second, and third-place finisher Susan Richardson.

Jason Stambaugh topped the intermediate class, over Mark Lucabaugh in second and John Calp, third. Senior division honors went to first-placed Dixie Doll, Brad Walker, second, and Todd Morris, third.



Champion Guernsey from left, Kelly Jo Myers, dairy princess; Todd Morris with reserve junior and reserve grand champion; William Jenkins with junior and grand champion; and Stacey VanSant, judge.



Champion showman of the dairy roundup, from left, front row, Cloverbud, Nicole Marks and Junior, Angle Beshore. Back row, Intermediate, Jason Stambaugh, senior, Dixie Doll, and judge, Stacey VanSant.

Invitation to Our Customers and Farmers!

Reading Bone Fertilizer & Messick's Farm Equipment

In Cooperation with Milton Hershey School Ag Science Program

Demonstration Field Day and Plot Tour

August 10, 1994

First Tour of Plots 9:30am

Location:

Milton Hershey Farm, Hershey, PA

Intersection of Rt. 322 and Homestead Road

Demonstrations

Residue Tillage
Residue Management
Forage Making
Forage Preservation
Satellite Technology (GPS)
Farm Mapping

Pesticide Certification points 1-core
3-category

Refreshments available
Lunch provided (BBQ Chicken)

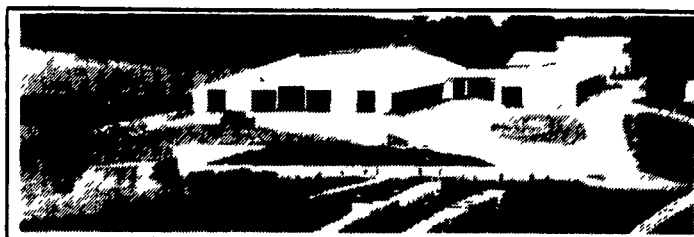
Plot-Tours

Corn and Soybean Varieties
STS Soybean
Population & Depth Study
Herbicide Demo Plots
Seed Treatment
Total Nutrition Mgt.

For Details Call
Reading Bone
1-800-535-7571 Millardsville
1-800-437-0188 Leesport
Or
Messick's Farm Equipment
1-800-222-3373

AGRI-INC.

Custom Built Farm Buildings
Designed To Your Needs



DAIRY COMPLEX



HORSE STALL BARN

Let Our Experience Work For You

- Dairy Complexes And Replacement Stock Facilities
- Horse Stall Barns And Riding Arenas
- Workshop And Machinery Storage Buildings
- Timber Column Buildings For Light Commercial



AGRI-INC. The Construction Professionals

151 E. Farmersville Rd., Ephrata, PA 17522
(717) 354-4271

Serving The Agricultural Industry For Over 25 Years

