

Cumberland Valley Produce Auction Begins Operations

ANDY ANDREWS
Lancaster Farming Staff
SHIPPENSBURG (Cumberland Co.) — A new produce auction has recently been established to handle the increasing demand for produce in the Cumberland Valley region.

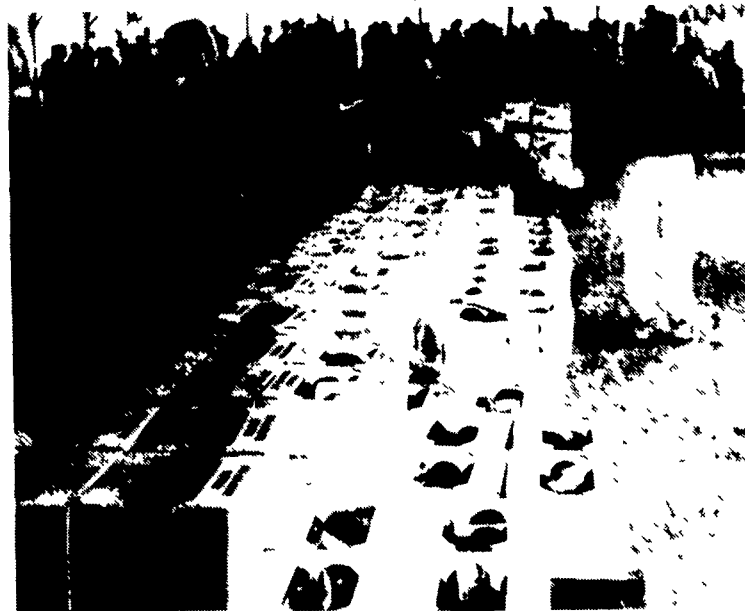
Called the Cumberland Valley Produce Auction, the first sale was held on Koser Road four miles north of Shippensburg on June 2. The auction facilities, begun in mid-May this year and finished in time for the auction, have been accommodating a growing list of

produce growers and buyers. As of presstime, there were 300 growers and about 500 buyers. Construction of the facility was finished within 20 days, according to Delmar Martin, manager of the auction. The facility measures nearly 11,000 square feet with an additional 720 feet of office space. The facilities are maintained on about four acres of land.

Many growers volunteered to establish the auction in time for the opening date by donating labor. "This attests to the support of the growers who provide a tremendous amount of assistance for the auction," said Martin.

At mid-season, the auction continues to take in more growers and buyers for the region. Buyers attend from Pennsylvania's south and central regions and from Maryland, Ohio, New York State, Virginia, and West Virginia, said Martin.

The auction was ready in time to begin at the heart of the season, according to Martin. The auction will continue until late November.



Locally grown tomatoes are in season at the newly formed Cumberland Valley Produce Auction. Here, a buyer inspects early season tomatoes packaged in half-bushel boxes.



Early season cantaloupes in bulk quantities are ready to sell at Cumberland Valley Produce Auction.

Plans next year are to begin the auction in mid- to late-March and operate through the Thanksgiving season.

The auction charges a flat rate of 8 percent to growers.

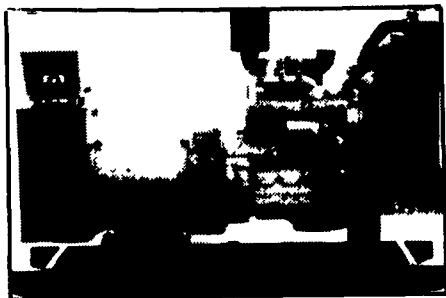
The business was formed as a partnership with 14 members. Some who helped with the development of the auction also worked with the Leola Produce Auction in Lancaster County.

Amos King, secretary of the Cumberland Valley Produce board, said the auction would like to install and operate a small vegetable plot test site much like the one at Leola.

"The purpose of the auction is to allow farmers to market their locally grown product at an auction that serves a broad range of customers (small and large) to include supermarkets, wholesale buyers, and fruit and vegetable stand operations," said Martin. "Locally grown produce is really our speciality." He indicated that growers are not restricted to product type or amount.

Sales are held six days a week, from Monday through Saturday, beginning at 10 a.m. For more information, contact Delmar Martin, Cumberland Valley Produce, 47 Mud Level Rd., Shippensburg, PA 17257, (717) 530-5007.

GENERATORS



AUTOMATIC and MANUAL SYSTEMS

DIESEL
L.P. GAS
NAT. GAS
NEW & USED

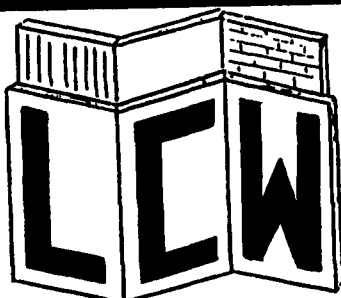


LEROY SOMER PTO ALTERNATORS

BRUSHLESS
INDUSTRIAL GRADE
11 to 60 KW

READY FOR THE NEXT STORM?

For Sales and Service Call The People Who Know Generators
MARTIN ELECTRIC PLANTS
280 Pleasant Valley Rd., Ephrata, PA 17522-8620
Tel: 717-733-7968 Fax: 717-733-1981



LANCO CONCRETE WALLS

Agricultural • Commercial • Residential

WE DO SCS WORK - ALL TYPES OF POURED WALLS

- Retaining Walls
- Manure Pits (circular or rectangular)
- Footers
- Bunker Silos
- Slatted Floor Deep Pits
- Flatwork

CONTACT: STEVE PETERSHEIM, JR.

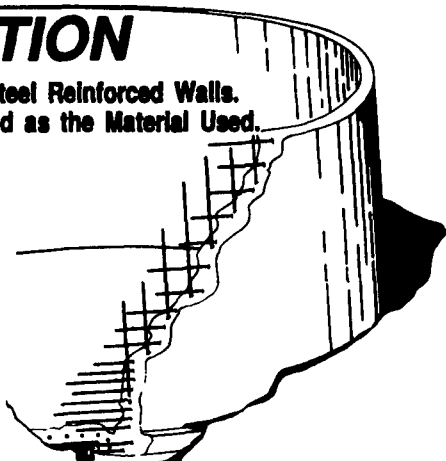
P.O. Box 256, Bird-In-Hand, PA 17505
717-291-4585 • (FAX) 717-291-4686

Since 1972...The Original & The Largest
POURED SOLID CONCRETE

THE STRENGTH IS IN THE CONSTRUCTION

- Poured Solid Concrete Steel Reinforced Walls.
- The Wall is Only as Good as the Material Used.

- Manure Pit Walls
- Hog House Walls
- Chicken House Walls
- Concrete Decks
- House Foundation Walls
- Cistern Walls
- Barnyard Walls
- Concrete Pit Tops
- Silage Pit Walls
- Retaining Walls



All sizes available - round or rectangular

Take the questions out of your new construction. Call Balmer Bros. for quality engineered walls.

Balmer Bros.

CONCRETE WORK, INC.
Invest in Quality - It will last a lifetime.

243 Miller Road
Akron, PA 17501
(717) 733-0353
8:30 AM - 3:30 PM
(717) 859-2074
After 8:00 PM



"Superior Products For the Agricultural Industry"

NATURAL ORANGE CITRUS HAND CLEANER & CONDITIONER
With PUMICE

Available in Both Pumice and Non-Pumice Formulas
CLEAN YOUR HANDS THE NATURAL WAY.

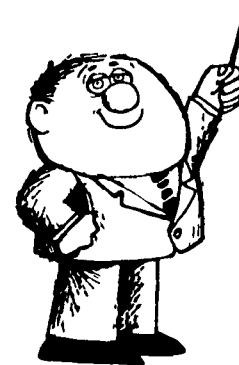
NATURAL ORANGE is a Citrus Hand Cleaner and Conditioner. It's Biodegradable, and it contains NO PETROLEUM SOLVENTS. It's a Fresh Smelling Citrus-Based Hand Cleaner and Conditioner that cleans and conditions your hands **THE NATURAL WAY.**

NATURAL ORANGE Quickly and Gently removes the toughest Dirt, Grease, Grime, Paint, Tar, Oil, Glue, Resins, Printer's Ink, Rubber Gasket and Tile Cement, Magic Marker, Grass Stains, Shoe Polish Adhesives and Much More!

NATURAL ORANGE is a Great Skin Conditioner. REGULAR USE HELPS KEEP HANDS FEELING GREAT!
DIRECTIONS: Rub Hand Cleaner into dry hands (use no water) until soil is loosened or dissolved. Wipe dry or rinse with water.
CONTENTS: Water, Citrus, Pumice, Glycerin, Biodegradable Surfactant, Lanolin, Aloe-Vera
KEEP OUT OF REACH OF CHILDREN - AVOID EYE CONTACT
Made in the USA

To Order Call Eastern Crown at 815-628-3505
EASTERN CROWN INC.
P.O. BOX 216, VERNON, NY 13476

Net 128 oz (1 US Gallon)
Distributed by



A LESSON WELL LEARNED... LANCASTER FARMING'S CLASSIFIED ADS GET RESULTS!