

# Champions Bring High Prices At Troy Fair Livestock Auction



Shown from the left, Neil Gilliland stands with his grand champion steer, Kenneth Potter represents buyer P&N Packing, and Rob Gilliland holds the halter of the reserve grand champion steer.



Kendra Moore holds the halter of her grand champion market lamb, while buyer representative, Lynn Chubbuck, of Farm Credit, holds the banner.

**CAROLYN N. MOYER**  
Bradford Co. Correspondent  
TROY (Bradford County) —  
Going once, going twice...sold,  
was the phrase that rang out over  
and over at the Bradford County  
Livestock Sale as 41 hogs, 25  
lambs and six steers crossed the  
auction block.

Bob Shaylor, of Shaylor Auctioneers  
pounded the gavel for each animal  
as he and his crew donated their  
time and talents to the kids.

"I've been doing this since the  
sale started in Bradford County,"  
he said. Prices topped the scale  
resulting in above market averages

of 81 cents per pound for the steers.  
\$1.45 for the lambs and \$1.57 for  
the hogs.

Grand champion animals consistently  
commanded the highest prices.

In the steer sale, P&N Packing  
purchased the grand champion,  
owned by Neil Gilliland, for  
\$1.125 per pound. The steer tipped  
the scales at 1,192 pounds. The  
reserve champion steer was also  
purchased by P&N Packing. Rob  
Gilliland received 90 cents per  
pound for his 1,206-pound winner.

In the lamb sale, Northeast Farm  
Credit of Towanda was the bidder,  
purchasing the 133-pound champ-

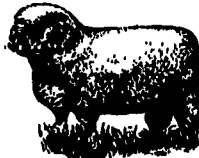
ion from Kendra Moore for \$3 per  
pound.

Tuscarora Wayne Insurance  
purchased the reserve champion  
lamb for \$1.60 per pound. Geoff  
Powell raised the 110-pound  
reserve champion.

In the hog sale, James Alderson  
sold his 238-pound champion to  
C&N Bank of Troy for \$2.20 per  
pound.

The reserve champion hog went

(Turn to Page A28)



## • Agricultural • Commercial • Residential



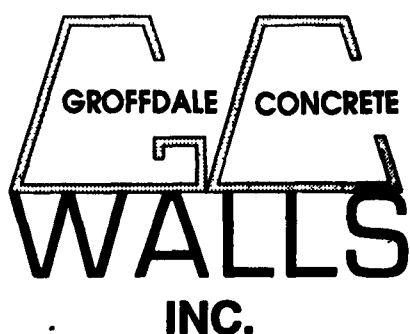
Partial In-Ground Tank Featuring Commercial Chain Link Fence  
(5' High - SCS approved)

- Retaining Walls • Bunker Silos
- Manure Storage, Etc.

LET OUR EXPERIENCE WORK FOR YOU-ESTABLISHED SINCE 1979!  
WE ORIGINATED THE CONCRETE SYSTEM!

Sizes And  
Layouts  
To Your  
Specifications

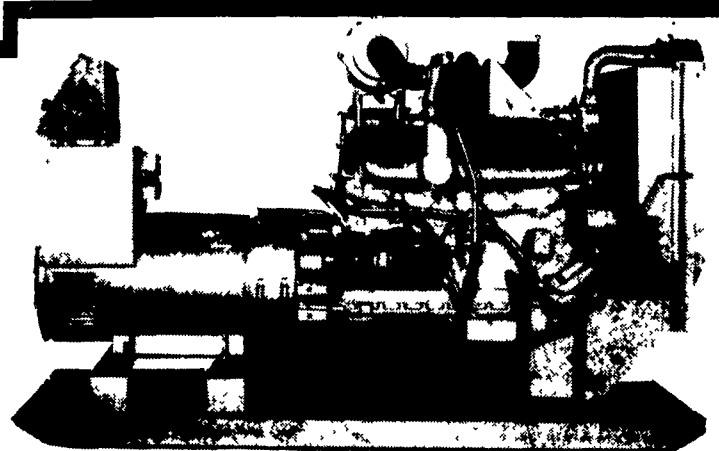
We Work  
Hard For  
Customer  
Satisfaction!



430 Concrete Ave., Leola, PA  
717-656-2016

Authorized  
Dealer For  
KEYSTONE  
CONCRETE  
PRODUCTS

- H-Bunks
- J-Bunks
- Trench  
Silo Walls
- Hog &  
Cattle Slats



Automatic Systems

USED  
1 - 15 KW GASOLINE  
1 - 15 KW DIESEL

NEW  
1 - 30 KW LP GAS  
1 - 60 KW PTO 540 INPUT  
1 - 60 KW PTO 1000 INPUT

24 HR  
SERVICE

**MAXI-POWER**

RADIO  
DISPATCH

330 Fonderwhite Rd.

Lebanon, PA 17042

717-273-4544

1-800-272-MAXI

You Must Stop at our  
Exhibit at...

## AG PROGRESS DAYS

on West 10th Street

Meet Westfalia users —  
Your neighbors!

