

St. Louis Cattle, Hogs

Springfield, Il.
Monday, August 1, 1994

NATIONAL STOCKYARDS, ILLINOIS CATTLE AND CALVES 600, COMPARED TO LAST MONDAY SLAUGHTER STEERS AND HEIFERS .50 TO 1.00 LOWER, EXCEPT HOLSTEIN STEERS STEADY TO 1.00 LOWER. COWS 1.00 LOWER. BULLS STEADY. SLAUGHTER SUPPLY MIANLY CHOICE AND MIXED SELECT AND CHOICE STEERS AND HEIFERS. LIGHT SUPPLY OF HOLSTEIN STEERS AND AROUND 10% COWS.

SLAUGHTER STEERS: CHOICE 2-4 1050-1325 LBS. 63.00-64.50, 2-3 1075-1350 LBS. 64.50-65.00, PART LOAD 65.50; MIXED SELECT AND CHOICE 2-3 950-1325 LBS. 60.00-63.00. SELECT 2-3 900-1275 LBS. 57.00-60.00. HOLSTEIN STEERS: FEW CHOICE 2-3 1250-1400 LBS. 56.00-57.00, COUPLE PACKAGES AT 73.00; MIXED SELECT AND CHOICE 2-3 1075-1450 LBS. 52.00-56.00.

SLAUGHTER HEIFERS: CHOICE 2-4 900-1275 LBS. 62.00-63.50; 2-3 950-1300 LBS. 64.50-64.00, SEVERAL AT 64.00; MIXED SELECT AND CHOICE 2-3 850-1150 LBS. 59.00-62.00. SELECT 2-3 825-1150 LBS. 56.00-59.00.

SLAUGHTER COWS: BREAKING UTILITY AND COMMERCIAL 2-4 40.00-42.00; HIGH YIELDING BREAKING UTILITY 42.00-43.00. CUTTER AND BONING UTILITY 1-2 42.00-43.00; HIGH YIELDING CUTTER AND BONING UTILITY 1-2 43.00-44.00; CANNER AND LOW CUTTER 1-2 37.00-40.00; SHELLY CANNER 1-2 33.00-37.00.

BULLS: YIELD GRADE 1-2

1150-2100 LBS. 52.00-58.00; FEW YIELD GRADE 1 AT 59.00.

THIS REPORT IS A SERVICE OF THE ILLINOIS DEPARTMENT OF AGRICULTURE LIVESTOCK AND GRAIN MARKET NEWS SERVICE, SPRINGFIELD, IL. (217) 782-4925.

New Holland Horses

New Holland Sales Stables
New Holland, PA
Monday, Aug. 1, 1994

Report Supplied By Auction

251 HEAD. STEADY TREND. BETTER RIDING HORSES 1050.00-1625.00.

DRIVING HORSES 490.00-1025.00, FEW 1500.00-1600.00.

RIDING HORSES 460.00-950.00.

REGISTERED RIDING 545.00-1260.00, 1 AT 3200.00.

KILLERS: FEW 810.00-875.00;

LIGHTWEIGHTS 460.00-585.00, HEAVY WEIGHTS 640.00-745.00.

PONIES: 130.00-300.00.

LARGE PONIES 375.00-460.00, 1 AT 585.00.

COLTS 145.00-310.00.

Lebanon Valley Livestock

Fredericksburg, PA

Tuesday, August 2, 1994

Report supplied by Auction

STEERS: 12 CHOICE HOLSTEINS 1290-1475 LBS. 58.25-59.50; SELECT 1175-1305 LBS. 54.75-56.50; STANDARD 1175-1520 LBS. 54.00-54.75.

HOLSTEIN HEIFERS: CHOICE 1150 LBS. 63.75; SELECTS 1150-1395 LBS. 56.50-59.25.

COWS: 79 HEAD. BREAKING UTILITY AND COMMERCIAL 45.00-48.25; HIGH YIELDS UP TO 49.25; CUTTER AND BONING UTILITY 42.00-45.50;

CANNER AND LOW CUTTER 38.00-42.50; SHELLS 33.00 DOWN.

BULLS: 8 HEAD. YG#1 1280-1740 LBS. 56.00-58.25; YG#2 1240 LBS. 53.75.

CALVES: 148 HEAD. 85-95 LBS. 50.00-55.00; STANDARD AND GOOD 75-90 LBS. 40.00-50.00; UTILITIES 75-100 LBS. 30.00-45.00.

FARM CALVES: #1 HOLSTEIN BULLS 100-125 LBS. 80.00-112.00; #2 HOLSTEIN BULLS 95-100 LBS. 100.00-110.00; #1 HOLSTEIN HEIFERS 100-115 LBS. 120.00-175.00; #2 80-90 LBS. 130.00-170.00.

BEEF BULL X HEIFER CALVES: 70-90 LBS. 127.00-150.00.

HOGS: 65 HEAD. US#1&2 230-241 LBS. 40.75-41.50; US#2-3 217-227 LBS. 39.35-40.50; 196 LBS. 37.00.

SOWS: 39 HEAD. #1-3 460-545 LBS. 28.50-31.10; #2-3 350-445 LBS. 25.50-28.75.

BOARS: 3 HEAD. 550-565 LBS. 27.25-27.75; 315 LBS. 27.50.

Valley Stockyards

Athens, Pa.

Monday, July 1, 1994

Report supplied by auction

HOLSTEIN HEIFER CALVES TO 215.00.

VEAL CALVES, NONE.

VEALER BULL CALVES TO 135.00.

SLAUGHTER CALVES 65.00 AND DOWN.

GRASSERS & FEEDERS 45.00-75.00.

LAMBS 65.00-77.00.

SHEEP 21.00-33.00.

HOGS 200-250, NO TOP ONES.

SOWS TO 32.00.

BOARS TO 25.00.

PIGS TO 36.00.

HEIFERS 38.00-45.00.

STEERS, NO TOP STEERS.

FEEDER STEERS TO 87.00.
BULLS TO 55.00.
GOOD COWS 43.00-45.00.
COWS MEDIUM 38.00-43.00.
COWS POOR OR SMALL 38.00 AND DOWN.

CATTLE MARKET STEADY.
CALF MARKET STEADY.
HORSES TO 620.00.
PONIES TO 215.00.
GOATS: TO 47.50.
LAMB MARKET REAL GOOD.

Indiana Livestock

Homer City, PA

Thursday, August 11, 1994

Report supplied by Auction

BEEF: HEIFERS GOOD 66.00-68.25, MEDIUM 64.00-66.00, COMMON 60.00-63.50. STEERS: GOOD 69.50, MEDIUM 66.00-68.50, COMMON 63.00-64.40. COWS: GOOD 40.00-44.50, MEDIUM 35.00-42.50, COMMON 25.00-34.00.

BULLS: BUTCHER 55.50, BOLOGNA 50.00-53.50.

FEEDERS: GOOD 70.00-72.50, MEDIUM 60.00-68.50, COMMON 60.00 DOWN.

CALVES: 85-115 LB. (BULLS) 100.00-120.00, BEEF CROSS 120.00-160.00; 85-115 LBS. (HFRS) 135.00-195.00, 80 LB. UNDER 70.00 DOWN, 120 LBS. OVER VEAL 225 91.00.

LAMBS: GOOD 74.50, MEDIUM 69.00-72.00, COMMON SHEEP 22.00-30.00.

HOGS: NO. 1 200-240 LBS. 41.30; 245 LBS UP 38.00-40.50.

SOWS 26.00-32.50, BOARS: 25.50.

Pennsylvania Livestock Auction

Waynesburg, Pa.

Thurs., August 4, 1994

Report Supplied by Auction

CATTLE: SL. COWS: UTILITY & COMMERCIAL 41.00-48.00; CUTTER & BONING UTILITY 40.00-44.00; CANNER & LOW CUTTER 35.00-43.00; SHELLS 38.00 & DOWN. BULLS: YIELD GRADE 1 1500#-1870# 53.00-67.00; YIELD GRADE 2 1000#-1400# 45.00-54.00.

FEEDER STEERS: M&L-1 300-500# 70.00-90.00; 250-280# 75.00-101.00, M 600-900 55.00-70.00. HEIFERS M 1&L-1 300-500# 65.00-90.00; L-1 400-650# 60.00-75.00. BULLS M&L-1 300-620# 58.00-101.00.

CALVES: VEAL.. PRIME 90.00-105.00; CHOICE 80.00-88.00; GOOD 60.00-77.00.

FARM CALVES: #1 HOLSTEIN BULLS 90-120# FEW 85.00-100.00; #2 HOLSTEIN BULLS 80-100# FEW 75.00-100.00; BEEF X BULL&HFRS./HD. 60.00-110.00.

HOGS: BARROWS & GILTS #1-2 210-255# 40.00-42.50; #2-3 255-280# 35.00-40.50; SOWS #1-3 300-500# 28.00-35.00.

FEEDER PIGS: 1-3 25-35# 15.00-35.00/HD.

LAMBS: HIGH CHOICE 55-75 LBS. 58.00-80.00; CHOICE 90-105# 55.00-78.00; FEEDER LAMBS GOOD 54.00-67.00; SHEEP 15.00-38.00.

GOATS: LARGE 40.00-60.00/HD.; MEDIUM 25.00-40.00/HD.; SMALL 15.00-40.00/HD.

HORSES: 40.00-70.00, PONIES 20.00-45.00.

Make your investment count:

Increase your wheat yield by **\$26.38 an acre, with Hoffman 89**

Penn State Small Grain Trials
Three-Year Performance Summary, 1991-1993

Centre County

	Grain Yield	Bushel Weight	Test Wt. Loss (per acre)	Yield Loss (per acre)	Total Loss (per acre)
Hoffman 89	83 Bu/A	61.9 lb/Bu	-	-	-
Average	74 Bu/A	60.2 lb/Bu	-	\$27.00	\$27.00
% Advantage	12%	3%			

Lancaster County

	Grain Yield	Bushel Weight	Test Wt. Loss (per acre)	Yield Loss (per acre)	Total Loss (per acre)
Hoffman 89	103 Bu/A	59.8 lb/Bu	-	-	-
Average	97 Bu/A	56.6 lb/Bu	\$7.76	\$18.00	\$25.76
% Advantage	6%	6%			

A lot of effort and resources go into your growing investment. There's the labor to plant, monitor and harvest your crop. The tremendous investment in land and equipment. And the knowledge and experience you've accumulated over the years.

With all that's riding on your choice, you'll want a wheat variety that will produce for you in the field. And none surpass Hoffman 89.

Superior Test Weights. In three-year trials conducted by Penn State and the University of Maryland, Hoffman 89 registered the top test weight across all locations, in some cases approaching 62 lb/Bu. In Lancaster County

trials, its 59.8 lb/Bu performance produced test weight savings of \$7.76.

Yield. Superior test weight isn't the only advantage offered by Hoffman 89. In Centre County, it delivered 83 Bu/A—12% above the average. So you'd save \$27 per acre using Hoffman 89.

Averaging the results of both trials, you'd earn \$26.38 more per acre with Hoffman 89.

Make sure you get the most out of your investment by planting a proven winner — Hoffman 89. Just another way we add value to your seed investment.

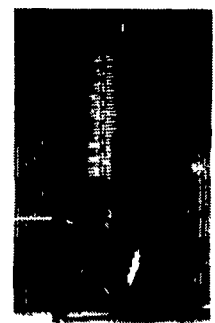


Hoffman Seeds, Inc., Landisville, PA 17538
Call Toll Free: 1-800-776-7929
Adding Value to your Seed Investment
© 1994 Hoffman Seeds, Inc



QUALITY BINS

We assemble, deliver & set-up bins on your farm



Models Available: Your Choice Of 6, 7, 9, 12 and 15 Ft. All Galvanized Hopper-Bottom Bins

We Ship UPS

Check Our Warehouse Prices 24-Hour Service

Swine & Poultry Systems Specialists
FARMER BOY AG.
410 E. LINCOLN AVE., MYERSTOWN, PA 17067

Hours: Mon.-Fri. 7:00 to 5:00; Saturday 7:30 to 11:30

PH 717-866-7565

QUALITY MIXER AT A QUANTITY PRICE

BUY A REAL



Reel Auggie 2000 Series Mixer

Blender/Feeders

Specializing In TMR Mixer Set-Ups. Call Us Today!



Just what makes the "Reel Auggie" better? You can finally mix and feed all of your ration ingredients including long stem dry hay and other tough roughages that previously could not be included in your mixed ration

Used Knight 2250 Mixer Feeder Excellent Cond., 1 Yr. Old
SPECIAL \$11,900

- Rissler 190 Cu. Ft. Mixer - Part or Stationary
- 5-600 Bale Processor - Demo \$1,950
- Weightronic Scales, Model 700E, Fits Any Brand Mixer, 5 Yr. Warranty
- VD 3000 Gal. Manure Tank, For Sale Or Rent

We Will Service All Brands Of Electronic Scales & Most Brands Of Mixers

MILLCREEK FENCE & FARM SYSTEMS
2285 Old Philadelphia Pike
Lancaster, PA 17602 — (717) 396-8987