

# GARRETT IS BIG ON AG TURBOS



## PLOW BIG SAVINGS ON GENUINE GARRETT TURBOS

Don't miss this opportunity to plow some big savings on Genuine Garrett Factory Remanufactured turbochargers. Your Authorized Garrett Distributor Penn Diesel Service should have a turbocharger or cartridge that fits your tractor, combine, or other farm equipment. If it's a turbocharged Ag engine, there's most likely a Garrett turbo on it. Look at the following list of OE's. There's a reason why they specify Garrett turbochargers for their engines.

- Allis Chalmers
- Deutz Allis
- Fiat Allis
- Ford
- International Harvester
- J.I. Case
- John Deere
- Massey Ferguson
- Navistar
- Perkins

For those same reasons, when it's time for a replacement turbo, it's time for Genuine Garrett. All Genuine Garrett turbochargers are remanufactured to original equipment specifications at the Garrett factory. It's your assurance of original equipment quality and performance with a warranty that matches the new turbo. Genuine Garrett turbochargers are remanufactured with the same high quality parts as new and reengineered for the most recent upgrades and refinements to maintain the exact performance characteristics into the original turbo. For more information on Genuine Garrett Factory Reman Turbos, see your local Garrett Distributor or call or write:

### PENN DIESEL SERVICE CO.

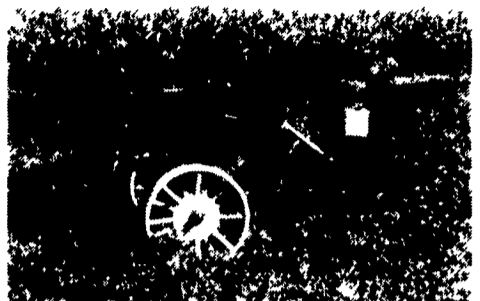
337 North Fairville Ave., 1-81 Exit 27, Harrisburg, PA 17112  
(717) 545-4207 (800) 535-2913

## The I & J Cultivator



Great For The Grazing Areas

**MOWERS:** 3 point or trailing features: guards & blade, move back and forth cuts like a scissors, virtually no plugging.



**DEEP TILL SLITTER:** Available in 1 or 2 shanks, optional hydraulics. On Sale Now

### I & J MANUFACTURING

Dept. LF, 5302 Amish Road • Gap, PA 17527

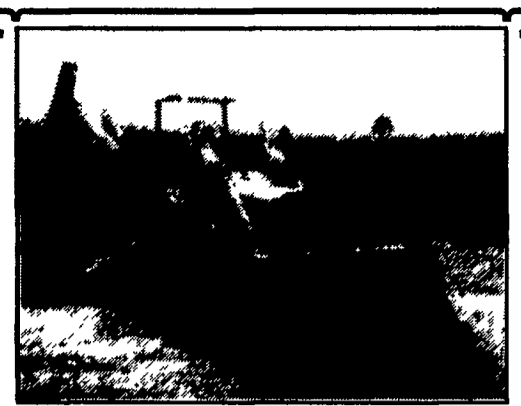
717-442-9451

(Call Between 8:45-9:00 A.M. Weekday Ask For Jake)

### WANT

Deutz DX 120 or DX 6.30  
4x4 cab and air  
VG to EX condition  
**(610) 298-2443**

JD 5010.....\$6,500  
JD 5020.....\$8,500  
JD 4240,  
3600 hrs.....\$21,500  
1977 Ford LNT9000  
truck tractor, rebuilt  
motor, everything  
fixed, ready to  
work.....\$10,000  
40' storage trailer,  
3 side doors....\$1,200  
**Ed VOGT & SONS**  
Millington, MD  
Call evenings  
**410-928-3276**



**John Deere 350 Crawler Loader Backhoe with a 4 in 1 Bucket, Good Under Carriage, Ready To Work \$8,900**

**LTM Equipment Co.**  
**717/949-3582**

## Best Buys in Used Equipment

### TRACTORS

IH 3588	JD 4640	CIH 7110, 2WD
IH 4568	JD 4840	(2) CIH 7120, MFD
IH 1586	JD 8630	CIH 9270
(2) IH 4366	JD 4240	Oliver 88
IH 2424	JD 4640 MFD	Farmall C w/Cult.
(2) IH 966	JD 4450	Ford 4600
IH 1466	JD 2550 w/Loader	Ford 3000
IH 1486	Case 2290	AC 6080 w/Loader

### DISCS

KR 2440 29'	KR 4924	IH 496, 22'
KR 1577 16'8"	KD 4907 25'	IH 496, 24'7"
KR 1927 25'	KR 4927A	IH 490
KR 4918 27'	SF 32'	Ford 16'
KR 1580	IH 480, 20'	Case K23B
KR 2413 25'	AC 2300D, 20'	JD 220

### COMBINES

(2) Case IH 1480	IH 915	JD 8820
(3) Case IH 1680	JD 4400	NH TR86
(3) IH 1480	(2) JD 6620	AC L-2
IH 1460	JD 9500	AC M
CIH 1460		

### PLOWS

JD 2800	Case 400 8'18"	IH 720, 5 Btm.
JD 2700 7x18 OL	IH 720, 5x18,	
JD 2500	Auto Reset	

### CHISEL PLOWS

DMI Tiger II Sub-Soiler 7 Shank	Steiger 2211, slicer chisel, 14'
JD 910 Sub-Soiler, 13 Shank	SF HB 30 Chisel Plow
Sunflower 21' Chisel Plow	BR 18' Chisel Plow
IH 55 Chisel Plow, 10 Shank	Athens Chisel Plow, 3 Pt. 10' & 12'
Landoll Soilmaster Chisel Plow 11 Shank	KR 4513 Chisel Plow

### MISC. TILLAGE

DL 26 CF Packer	IH 45 Fld.-Cult.
KR 3127 Landsman	BR 25' X-Fold Packer
KR 3121 Landsman	BR 6 Row Cult
KR 4129 38' fld. cult.	CIH 365 Fld. Cult.
	Landoll Tillall 875 Landsman Perfecta II fld. cult. 15'

### DRILLS

GP 24'	JD 8300 21x7.	IH 5100 21x7
GP 13' w/Cultiplanter	26x6, 23x7	w/cultiplanter
GP 14'	JD 750, 15 Ft.	Case IH 5100 21x7
(2) GP 15'	JD 530 30'	w/cultiplanter
GP 20'	(3) IH 5100 Drill	Vermeer 10' Drill
JD 8300	IH 510, 16x7	
w/Cultiplanter	21x7, 24x6	

### MISCELLANEOUS

AC 333 No-Till Planter	NH 30 Blower
AC 600 Planter	Schulte 5026 Rotary Cutter 26'
JD 7200 16x30 Planter	NI 323 Corn Picker, 1 Row
JD 1065A Header Cart	Badger TA54 Blower
JD 71 Corn Planter	Wic 08/85 Blower
Hesston 4800 Baler	
IH 56 Blower	

**HOOBER**  
HOOBER EQUIPMENT INC  
MIDDLETOWN, DE

(302) 378-9555 1-800-341-4028



## JOHN DEERE

### TRACTORS

JD 401-B, 2 Post Canopy, Reverser, 1340 Hrs.,  
1979, 2 Remotes, 148 Loader w/ 72"  
Bucket.....\$14,000  
JD 4650, 2WD, Power Shift, 3500 Hrs.....\$36,000  
JD 720 2 Cyl., Diesel, NF Pony Motor, 3pt.,  
1 Rem.....\$3,250  
JD 70 2 Cyl. Diesel, NF Pony Motor,  
1 Rem.....\$3,500  
JD 80 Two Cylinder, PTO, 1 Remote  
Good Tin.....\$5,500  
JD 40 Crawler.....\$3,500  
JD 4440 cab, QR, axle duals, 7900 hrs....\$17,500

### COMBINES

JD 643 Corn Head.....\$7,500  
9500 Combine 1800 hrs.....\$79,500

### HAY EQUIPMENT

JD 336 Baler, Kicker, Excellent.....\$5,000  
JD 335 Round Baler, Rental Return.....\$10,000  
JD 530 Round Baler.....\$12,000

### FORAGE EQUIPMENT

JD 714A Forage Wagon, Roof.....\$4,500  
JD 3RN Corn Head.....\$4,000  
JD 716A Forage Wagons, Tandem Axle.....\$2,500  
JD 3970 Chopper Less Heads.....\$10,000  
JD 3970 Chopper Less Heads w/  
Spout-trak, iron-gard, NICE.....\$21,000  
JD 714 Forage Wagon, Tandem Axle.....\$3,500

### PLANTERS

JD 750 10' Drill, Caster Wheel Hitch.....\$12,500  
Haybuster 1206, DD opener, press wheel,  
24x6.....\$3,250  
JD 750 Less Caster Wheel Hitch,  
10' Grass.....\$13,000  
JD 7000 6RN Liq Fert. & Frame  
mtd. Coulters, Recond.....\$8,500  
JD 7000 6RN Dry Fert., Frame Mounted  
Coulters Insec.....\$7,500  
JD FBB Grain Drill 17x7, Grass.....\$1,000  
JD 8100 Single Disk Grain Drill 18x7, Grass.....\$1,500  
JD 8300 Single Disk Grain Drill 18x7, Grass.....\$2,250  
Lilliston No-Till 9680 Grain Drill.....\$8,500  
JD 8300 Double Disc Openers, Soybean  
Gauge Wheels, 21x7.....\$2,750

### SPRAYING EQUIPMENT

JD 550 Pull Type Sprayer, as is.....\$1,200

### TILLAGE EQUIPMENT

JD 950 Roller Harrow 12'.....\$3,750  
JD BWA Disc Harrow, Manual Fold Wing,  
24'.....\$1,000  
JD 950 Roller Harrow 15'.....\$2,500  
JD BWA Disc Harrow, Manual Fold  
Wings 24'.....\$2,750  
JD 714 Mulch Tiller, 14'.....\$5,000  
JD F125 4x16 Plow, Excellent.....\$1,650  
JD 960 21' Field Cultivator with  
Tine Attachment NEW.....\$7,200

### MISCELLANEOUS

Oswalt 530 Mixer Wagon.....\$19,000  
McKee 7' 3pt Snow Blower.....\$2,500  
JD AMT 600.....\$2,200  
JD AMT 626.....\$4,700  
JD 450 Hydra-Push Manure Spreader.....\$4,500  
Oswalt 230 Mixer Wagon.....\$6,500

### GLADHILL TRACTOR MART, INC.

900 East Patrick St.

P. O. Box 777

Frederick, Maryland 21701

Phone: (301) 663-6060 Jon Sewell

1-800-245-0691



## DEERFIELD

Ag & Turf Center, Inc.

Watsonstown Exit of I-180

Watsonstown, PA

717-538-3557

1-800-553-3370



Demo-Special  
JD 7800 MFWD Tractor  
Call For Price

### COMBINE CLEARANCE

JD 643 Corn Head	\$7,500
JD 9500 Combine 1800 hrs	\$79,500
JD 336 Baler, Kicker, Excellent	\$5,000
JD 335 Round Baler, Rental Return	\$10,000
JD 530 Round Baler	\$12,000
JD 714A Forage Wagon, Roof	\$4,500
JD 3RN Corn Head	\$4,000
JD 716A Forage Wagons, Tandem Axle	\$2,500
JD 3970 Chopper Less Heads	\$10,000
JD 3970 Chopper Less Heads w/ Spout-trak, iron-gard, NICE	\$21,000
JD 714 Forage Wagon, Tandem Axle	\$3,500
JD 750 10' Drill, Caster Wheel Hitch	\$12,500
Haybuster 1206, DD opener, press wheel, 24x6	\$3,250
JD 750 Less Caster Wheel Hitch, 10' Grass	\$13,000
JD 7000 6RN Liq Fert. & Frame mtd. Coulters, Recond	\$8,500
JD 7000 6RN Dry Fert., Frame Mounted Coulters Insec	\$7,500
JD FBB Grain Drill 17x7, Grass	\$1,000
JD 8100 Single Disk Grain Drill 18x7, Grass	\$1,500
JD 8300 Single Disk Grain Drill 18x7, Grass	\$2,250
Lilliston No-Till 9680 Grain Drill	\$8,500
JD 8300 Double Disc Openers, Soybean Gauge Wheels, 21x7	\$2,750
JD 550 Pull Type Sprayer, as is	\$1,200
JD 950 Roller Harrow 12'	\$3,750
JD BWA Disc Harrow, Manual Fold Wing, 24'	\$1,000
JD 950 Roller Harrow 15'	\$2,500
JD BWA Disc Harrow, Manual Fold Wings 24'	\$2,750
JD 714 Mulch Tiller, 14'	\$5,000
JD F125 4x16 Plow, Excellent	\$1,650
JD 960 21' Field Cultivator with Tine Attachment NEW	\$7,200

### GRAIN DRILLS

JD 750 10' Drill, Caster Wheel Hitch	\$12,500
Haybuster 1206, DD opener, press wheel, 24x6	\$3,250
JD 750 Less Caster Wheel Hitch, 10' Grass	\$13,000
JD 7000 6RN Liq Fert. & Frame mtd. Coulters, Recond	\$8,500
JD 7000 6RN Dry Fert., Frame Mounted Coulters Insec	\$7,500
JD FBB Grain Drill 17x7, Grass	\$1,000
JD 8100 Single Disk Grain Drill 18x7, Grass	\$1,500
JD 8300 Single Disk Grain Drill 18x7, Grass	\$2,250
Lilliston No-Till 9680 Grain Drill	\$8,500
JD 8300 Double Disc Openers, Soybean Gauge Wheels, 21x7	\$2,750

### TRACTORS

JD 401-B, 2 Post Canopy, Reverser, 1340 Hrs., 1979, 2 Remotes, 148 Loader w/ 72" Bucket	\$14,000
JD 4650, 2WD, Power Shift, 3500 Hrs	\$36,000
JD 720 2 Cyl., Diesel, NF Pony Motor, 3pt., 1 Rem	\$3,250
JD 70 2 Cyl. Diesel, NF Pony Motor, 1 Rem	\$3,500
JD 80 Two Cylinder, PTO, 1 Remote Good Tin	\$5,500
JD 40 Crawler	\$3,500
JD 4440 cab, QR, axle duals, 7900 hrs	\$17,500

### FORAGE HARVESTERS

JD 714A Forage Wagon, Roof	\$4,500
JD 3RN Corn Head	\$4,000
JD 716A Forage Wagons, Tandem Axle	\$2,500
JD 3970 Chopper Less Heads	\$10,000
JD 3970 Chopper Less Heads w/ Spout-trak, iron-gard, NICE	\$21,000
JD 714 Forage Wagon, Tandem Axle	\$3,500

### TILLAGE EQUIP.

JD 950 Roller Harrow 12'	\$3,750
JD BWA Disc Harrow, Manual Fold Wing, 24'	\$1,000
JD 950 Roller Harrow 15'	\$2,500
JD BWA Disc Harrow, Manual Fold Wings 24'	\$2,750
JD 714 Mulch Tiller, 14'	\$5,000
JD F125 4x16 Plow, Excellent	\$1,650
JD 960 21' Field Cultivator with Tine Attachment NEW	\$7,200

