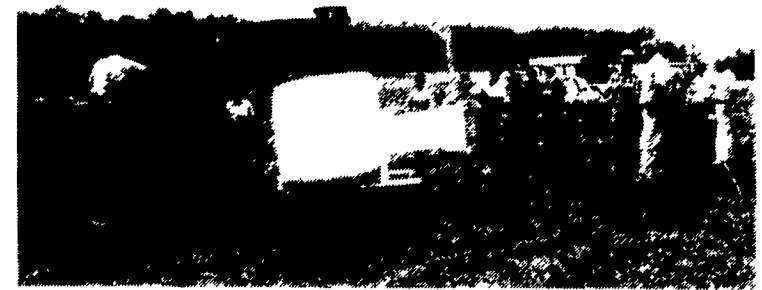




Above, the the crowd watches the square-bale and raking equipment at work. Below, the round-balers work.



Two different ways to wrap large round bales were demonstrated.

## Ag Showcase Day

EVERETT NEWSWANGER  
Managing Editor

FAIR HILL, MD — The Ag Showcase Day at the Cecil County Fair again offered farmers the chance to see some of the displayed farming equipment in action. Even with poor haymaking weather, a good number of farmers attended, and the enthusiasm of the participants was evident.

"The event is always popular," said Amy Russell, Cecil County ag agent. "This is the 13th Ag Showcase Day, and we have a wonderful volunteer group. The event is a success because of all the good people who work with it.

"Rather than just see equipment on display at the fair, it is terrific to see the latest equipment and technology in action. If you have questions, you can find answers in the working examples."

Al Miller, fair vice president in charge of the grounds, said they like to keep things moving in the field at Ag Showcase because that is what the farmers seem to enjoy.

At last year's 40th anniversary of the fair, a number of antique tractors and pieces of equipment were worked in the field. This year a few pieces of antique farm machinery were displayed but not worked. But Miller said that because of the popularity of that event last year, he thought they may try to get antique equipment working in the fields again in future years.

The theme of Ag Showcase this year was forage quality. And most of the equipment in action related to forage. Activities included seed selection, planting, harvesting and storing. The event is held at Fair Hill Horse Farm adjacent to the fair grounds.

Dealers involved in showing equipment included: Ag Industrial; C. B. Hooper; Biggs, Inc.; W. N. Cooper, and Ben Haines. DTN showed a satellite link to obtain crop and weather reports. The Cecil County Ag Extension and Soil Conservation Service sponsored the event along with Farm Credit; Agway; Southern States; Hoffman Seeds, and Ethel Murray.

## Young Farmers Meet

EPHRATA (Lancaster Co.) — The Ephrata Area Young Farmers met at 7 p.m. on July 21 at the Zimmerman farm along Stevens Road. Doris and John Zimmerman served a tasty picnic supper enhanced by fresh corn on the cob and cantaloupe provided by the Clark Stauffer farm.

Jay Hows, manager of agricultural services for the Lancaster Chamber of Commerce, presented information on the current situation of water use regulation and fees as proposed by the Susquehanna River Basin Commission.

The commission was formed on January 23, 1971 by the Susquehanna River Basin Compact, an agreement between the States of New York, Pennsylvania, and Maryland, and the U.S. government. The commission consists of one representative from each of the entities.

The SRBC extended the comment period until September 1, 1994, and directed staff to actively work with the ag community to develop alternatives to a fee structure.

President Philip E. Risser conducted a short business session, and advisor Michael W. Brubaker gave the information that the Cocalico School Board will give the association support.

## BUY, SELL, TRADE OR RENT THROUGH THE CLASSIFIED ADS

PHONE: 717-626-1164 or 717-394-3047

FAX 717-733-6058

Mon., Tues., Wed., Fri. 8 AM to 5 PM; Thurs. 7 AM to 5 PM

### 1 FARM EQUIPMENT

12½' Brillion cultimulcher packer, very good condition, \$1,500. (2) Rainbow S/P irrigation travelers, \$5,500 OBO. (609)299-3540.

(1)3000 & (1)9000 Gal. SS nitrogen storage tanks. 703/639-2262, after 8pm 703/382-0570.

1469 NH self-propelled haybine, Wisconsin motor, runs good, \$2000 OBO. 717/445-4602.

1947 John Deere A; Ford 8N. 717-336-2497 after 4PM.

1949 Ferguson T-25 tractor w/Bushog, motor recently overhauled, \$2,000. (610)593-7045.

1967 U-model Mack tam. dump truck, will trade for small dozer or backhoe; Int. 10' disc transport; JD 60 tractor; WAP 3-phase steam genny; Int. 300 utility tractor; 2 big incubators. 717/726-6641 before 9:30pm.

1977 4400, diesel, only 1,359 hrs., super sharp, \$9,850. Finance. Larry Stalter "The Combine Man" 1-800-248-2151

1980 7720 JD combine, like new, flex head, new corn head. Take over payments! 1755 Oliver, real nice, 3500 hours, asking \$7,000. (717)837-2395.

1990 JD 9500, 620 sep. hrs., sharp, \$69,500. Trade & Finance. Call Stephen 717-249-2317

1 Row Cultivating Tractor, 140 International High Wheeler, Fully Equipped, Fully Hydraulic, Fertilizer Tank on Each Side Plus Cultivator. (609)723-3633.

20 Bushel Bulk Bins: 42"x42"x36"h, \$7 each. (717)382-4878.

(2) 20.8x38 Armstrong tractor tires, 85-90% tread. 717/222-4432.

24' Farmco Feeder Wagon. (717)933-4893.

255 White disc, 11' wide in good condition, \$1,600 OBO. (717)637-4887.

(2) Bager forage wagons, tandem axle, \$5000/ea., good condition. & 717-524-2673.

(2) JD models W&D, engines run, also parts. Sam Hostetter, RD1, Box-44, Reedsville, PA 17084.

3 Pt. Hitch Equipment: IHC sickle bar mower 7', Ford 5' rotary mower, MF 5' rotary mower, mechanical transplanter w/new tank. Thom Wheary, 717/687-0102.

3pt 1B plow; 3pt 6' flail mower; 6'x10' enclosed trailer; Farmall Cub sickle bar mower; 11' aluminum boat. 717-442-4279.

40KW Gen. set 453 Detroit, Phase-I, Phase-III, good, \$4500; 100KW Cat 3304, 3-phase, good, \$8500. NO Sunday calls 717-922-1135.

4 HP engine w/6" blower for vacuuming up leaves and grass. Mounts on riding mowers, \$350. Phone 610-754-7366.

510 diesel, very nice, 1144 & grain head, \$10,450. Call Stephen. 717-249-2317

5400 Deere Chopper, low hrs., 4x4, most any heads, small knives. Larry Stalter "The Chopper Man" 1-800-248-2151

#58 NH Thrower Complete. \$900 OBO. (717)922-4571.

630 Case D tractor, 48hp, JFE-LPTow/JD3 bottom mtd. plow, \$3,100. Van Brunt grain drill, 12 disc w/ wood wheels, \$150. NI #7 cornpicker \$375. NH manure spreader w/PTO \$400. MH ensilage cutter w/ pulley and pipe, \$250. Montgomery County. (610)489-9552.

65KW genset CAT D330A, 4 cyl. diesel, 220/440/60/3 phase. Complete w/ electrical control boxes \$4850. 717-859-3168.

6600 diesel, good, shedded, rotary screen, only \$8,950. Call Stephen 717-249-2317

699 MF 4WD tractor w/ quick attach loader, good condition; 5209 NI discbine, \$5200 OBO; 5 trailer axles, \$100/each or \$400/all; 149 Cub Cadet hydrostatic mower, good condition, \$1600 OBO. 717/539-8508.

6 foot JD 606 rotary mower, 3 point hitch, slip clutch. (717)445-5359.

6 row Hugerhead late style for Gleaner M-3 combine, like new. 717-776-7692

702 Uni system, \$1,500. Husking bed \$850. 3R picker head \$500. Pickup head \$150. Combine \$100. Platform grain head \$350. Chopper unit \$500. NH chopper wagon #6, \$1,000. (814)763-4874

705 Uni tractor, 717 combine, 740 throat, 713S flex head, \$5500 717-677-8789.

HELP FOR A BUDGET HEADACHE



IN THE  
WANT ADS