

# Dairy and Livestock Sales

## Public Auction Register

Closing Date Monday 5:00 P.M.  
of each week's publication

FRI. OCT. 14 - 1:30PM, State Graded Feeder Pig Sale. Located At Carlisle Livestock Market, Inc. Exit 12 South Off I-81 Left Onto Alexander Spring Road. (717) 249-4511.

FRI. OCT. 14 - 7PM, Feeder Cattle. Located New Holland Sales Stables Inc., 101 W. Fulton St., New Holland, Pa. Norman Or David Kolb, Aucts.

FRI OCT 14 - 6PM & SAT. OCT 15 - 9AM Real Estate, household goods, antiques, coins, tools & storage shed East end of Leola at 366 E. Main St. in Village of Bareville along Rt. 23. Upper Leacock Twp Lanc. Co., Pa. By Mary Usner, Amos M. Evans, Robert E & Jeffrey R Martin, aucts.

SAT. OCT. 15 - Located at RR 2 Newport, Pa 40 Acre Farm, farm machinery, butchering equip, old antiques & collectibles. Ralph & Jessie Was, owners. Bryan D Imes, Auct.

SAT. OCT. 15 - Arnold Hog Production Sale, Lebanon Area Fairgrounds, Lebanon, Pa. Harry H. Bachman, auct.

SAT. OCT. 15 - 1.00PM 57 Acre Dairy Farm, Located 1283 Sheep Hill Rd., East Earl, 1 1/2 mile E. of Blue Ball. Owner: Ivan S. & Ruth Zimmerman. Nevin Martin

& Sons, Aucts.

WED. OCT. 19 & THURS. OCT. 20 - Large Two Day Sale Of Farm Equipment, Etc. Located 6 Miles South Of Chambersburg, Pa., One Mile East Of Marion Along Rte. 914, 1/2 East Off Rte. 81, Exit 4. Owners, Jerrold & Gloria Oaks. Marion Auction Service.

THURS. OCT. 20 - 9AM Real estate, 39 1/2 acre farm, farm machinery & personal property Luke Landis, 1276 Landis Rd., Ephrata, E Cocalico Twp. Take Rt. 272N. to traffic light at Reamstown turn right onto Church St. thru town to Red Run Rd. turn

left to Landis Rd. turn right. Kline, Kreider & Good Aucts.

FRI. OCT. 21 - Annual consignment gun auction, held at the Port Royal Community Bldg. 4th st. Port Royal, Pa. Bryan D. Imes, auct.

FRI. OCT. 21 - Farm Machinery, Tools, Crops, Butcher Equipment. Located At 1453 Bedford Rd., Shippensburg, Pa. Owners, Mr. & Mrs. James A. Seibert. Nevin & Andrew Martin Aucts.

FRI. OCT. 21 & SAT. OCT. 22 - 9AM-Sat Annual Support For Prison Ministry Auction To Be Held At The Farmersville Auction Grounds Local Aucts.

FRI OCT. 21 - 5PM, Annual Fall Gun, Hunting & Sporting Equip Sale, Consignment Located At Miller Auct. Center, Bethel, Pa. Call To Consign. Dwight D. Miller, Auct.



**10 HEAD STANDARD BRED TROTTERS**

Will be hitched at 8:30 A.M.  
To Be Sold At Approx 12:00 NOON  
**MON., AUGUST 1, 1994**

New Holland Sales Stables, Inc.  
Horse sale, New Holland, PA  
Consigned by  
**ELAM B. STOLTZFUS**

# PUBLIC AUCTION

**2 DAY CONSIGNMENT THURS., AUG. 4, FRI., AUG. 5**

At 9:00 A.M. Both Days

**Of HORSE, COLLAR EQUIPMENT, SEWING MACHINES, SADDLES, HARNESS SHOP EQUIPMENT AND TACK**

Located 1 mile east of Gap, on Rt. 30, turn left on Umbletown Rd. First place on right, Lanc. Co., Pa.

**ANTIQUE HORSE COLLARS, EQUIP.**

**FULL LINE OF EQUIP. TO MANF. HORSE COLLARS**

To Be Sold Fri., Aug. 5

**Balance of Sale Thurs., Aug. 4 - Fri., Aug. 5 9:00 AM**

Buritan sewing machine, Rim Press, International Lacer, J.D. Randall long straw rim stuffer with boxes, J.D. Randall long straw collar stuffer with boxes, short straw stuffer, Brownson collar blocking machine, J.D. Randall collar end fuser, collar end cutter, George McKay Co. Collar sizer, all belts, line shaft and bulleys.

Ferdinand Sewing machine bull 900-B walking foot with air motor; Suki sewing machine LU-562 with air motor; Singer automatic feed professional 20U, Penn Riveter, Stimpson riveter, Landis leather stripper, leather shaver, straw cutter, long rye straw, collar pattern, clock pattern, leather, rivet, thread lacer for parts, lots of rey straw for collars, new collars, new clock collars, bale straw chopper, collar caps, sweat pads, saddlers bench, some hardware, etc.

**ALSO LOTS OF CONSIGNMENT ITEMS OF SEWING MACHINES ENGLISH & WESTERN SADDLES SADDLERS TOOLS - TACK & LEATHER SEWING MACHINES**

2 Landis #16 wide neck Champion, Nakopima 441 walking foot, Singer 97-10, Singer patch machine, Singer port. mach.

**SADDLES**

Western & English saddles, riding bridles, rings, bits, etc.

**TOOLS**

Electric gang punch foot operated punch press, skiver, bell skivers, crupper molds, tapered trace punch, Randall crown splitter, staves best whip hanger, Osborne rounder, hand edgers, hand creaser, twist handle draw gauge, third hand, saddlers bench, counting scales, chicken dryer.

**TRUCK LOAD LEATHER**

Lots hardware, snaps, buckles, LOTS LOTS MORE TO COME  
To consign to this acct, call Stoltzfus Horse Collars, 717-442-4145, Address 5466 Umbletown Rd, Gap, Pa.

Sale in Tent

Terms Cash, or good PA check, NO OUT OF STATE CHECKS

Sale to start 9:00 A.M. Both Days

Terms by

**STOLTZFUS HORSE COLLARS**

**CW SHIRK AUCTION SERVICE**

Lic. AU2750 Ph. 717-656-8793

Not Responsible For Accidents

Food at Auction

# PUBLIC AUCTION OF LIONEL TRAINS & ACCESSORIES

Saturday, August 6, 1994  
10:00 A.M.

Near Oakland, Md.

Ca. 1950 Lionel trains and accessories all w/boxes. Some "mint in the box".

For additional information contact:  
Custer's Auction Service

Deer Park, MD  
301-334-3141

## MT. ROCK FARM MID-SUMMER DAIRY SALE Thursday Eve., August 4, 1994

7:30 P.M.

Located south of Carlisle, Pa., off I-81 at Plainfield Exit to Rt. 11, south 2 miles to Cumberland Golf Course, turn right, go 1 mile to Clay Rd., left to stop sign, left to 2nd farm on left.

**Selling...80 HEAD HOLSTEINS**

Approx. 50 Head Fresh; 30 Springers  
15 Short-bred Heifers; A Few Open Heifers; 2 Stock Bulls;

All Heifer Calves

ALL ANIMALS VACCINATED FOR BVD  
Also selling will be a few Local Consignments - All Consignors must have animals vaccinated for BVD.

"Good Typey Animals - Ready to go to work for you!" "DON'T MISS THIS SALE!!!"

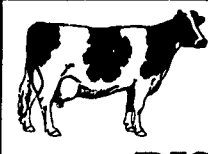
Trucking Available - Lunch - Health Charts

**BILL & CYNTHIA McKEEHAN**  
Owners

235 Springview Rd.  
Carlisle, Pa. 17013  
717-243-7651

Rick Foreman, Auctioneer  
Lic. #AU-1163-L

# MILK. IT DOES A BODY GOOD.™



## BLUE-CLAY COMPLETE HERD DISPERSAL

Located just off Route 14 in Columbia Crossroads, PA between Elmira, NY and Troy, PA. Turn at caution light, 1st farm past Judson's Feed Mill.

**Tuesday, August 16th**  
10:30 am

140 - Registered Holsteins - 140  
90 Milk cows, 35 bred or exposed heifers, 26 calves to yearlings.

**EXCELLENT HERD HEALTH STATUS**

\*\*\* Herd is double vacc. for BVD, IBR!!!\*\*\*  
Blood tested- Shots for Shipping Fever - Charts  
Day of Sale

**DHIA RHA 20,357m 3.8%f 770f 3.2%p 648p**

Super herd of cattle- young, mostly 1st thru 3rd calf, with popular sires, Milking Eltons, Cleitus, Belltones and Berlins with Blackstar, Elton, Cleitus, Dazzler, Belltone and Leadman in the young stock!

Sales Manager's Note: Due to personal health reasons, the Munro's have decided to disperse this outstanding group of cattle.

Watch papers next 2 weeks for additional information on this incredible herd!

**OWNERS:**

**Lyle and Linda Munro**  
Columbia Crossroads, PA  
717-297-2738

Sale Managed By:  
**WOOD'S AUCTION SERVICE**  
Gordon Wood & Sons  
Mansfield, PA  
717-549-4901 or 717-835-5857

## IMPORTANT NY-WINDRIDGE HOLSTEINS DISPERSAL 100 LOTS SHORT NOTICE MONDAY, AUGUST 8, \* 11 A.M. INTERCOURSE, PA.

**\*\*One Of The Absolute Finest Herds We Have Ever Sold Anywhere, Anytime\*\***  
**\*Only Due To The Fact That The Owner, Tom Poss Is In Need Of Immediate Heart Surgery, Are These Cattle Being Offered! BAA 106%!**

**\*3 Excellent, 11 Very Good, 23 Good Plus, 7 Good & A Young Herd!\***

**\*\*Herd Average 19,608M 3.5% 680 Fat 3.2% 636 Protein\*\***

**\*Herd Average Is Climbing Fast! Cows Are Averaging 75 Lbs. Now! No BST\***

**\*\*Milking Sires Include: Blackstar, Leadman, Cleitus, Leader, Jethro, Chairman Valiant, Trendy, Steady, Prompt, Symbol & More!**

**\*\*Service Sires Include: Southwind, Mark Pappy, Elton, Leader, Mountain, Benchmark, Momentum, Linjet, Hardtac!**

### A FEW OF THE MANY HIGHLIGHTS

\* A VG-86 Leadman Sells With PTA +83F +78P & CTPI +1232! Her Mountain Son, Just Born, Goes To All! She Just Finished With 2-00 365D 28,936M 3.6% 1055F 3.2% 916P! Dam Is VG-88 With 29,180M 3.9% 1138F 3.3% 951P & Next Dam Is VG-88-GMD-Dom With 35,480M 4.2% 1497F! Next 3 Dams All VG Or Ex! Mun-Cre Breeding In The Bottom Side!

\* VG-87 2nd Calf Steady Sells With 2-11 Me At 25,827M 962F 826P! Due In Jan To Chairman Valiant.

\* VG-85 2nd Calf Prompt Due October To Mark Pappy With 225D 17,624M 3.7%F 3.4%P!

\* An Awesome VG-87 Symbol Dtr Sells Milking 120 Lbs! She Will Go Excellent & Making 30,000M!

\* A Tremendous VG-86 Jethro Dtr Sells Due In Dec To Linjet & Me At 29,142M 869F 886P!

\* The Sweetest Uddered Herd That Has Been Sold In Years!

### \*\*FANTASTIC YOUNGSTOCK WITH GREAT SIRES!

\* A Very Fancy Jed Dtr Sells Born 12/93 With PTPI +1144! Built In At +70P!

\* An Adan Dtr Sells Born 5/93 With PTPI +1134! Another Adan Dtr Sells With PTA +1025! Many P9 Heifers Sell!

### SEMEN SELLING & EMBRYO'S

Blackstar, Raider, Adan, Mark, Ell, Southwind, Leader, Benchmark, Cubby, Curious, Elton Winken, Welwood, Jed & More!

\*\* 4 Merrill Embryo's Sell From One Of Melwoods Greatest Dtrs, Making 35,000M This Year & +65P! Also 4 Embryos By Momentum Sell From A VG-88 Red Witness Dtr With EX-MS!

**Sale Held At The Ben K. Stoltzfus Farm Located On PA 340, 1st Farm East Of Intercourse, PA.**

**\*\* We Emphasize, This Is A Fantastic Herd & The Great Buys Of The Year Will Be Here! Many Sell Milking Over 100 Lbs. Day & Up To 134 Lbs! No BST! Only Due To The Need Of Immediate Surgery, Are These Cows Being Moved & Sold! A Very Short Notice Sale! Don't Miss This Fantastic Herd Dispersal!**

**\*Herd Has Been On A Regular Vaccination Program & All Cattle Are Tested For Immediate Interstate Shipment & Inoculated Against Shipping Fever!\***

OWNERS  
**TOM & BEV POSS**  
Madison, NY  
315-893-7720

**The CATTLE EXCHANGE**  
Dave Rama RD 2 Box 79 Delhi NY 13753  
Ph 607/746 2226 Fax 607/746 2911  
AU-001463-L

**Stonehurst Farm**  
1841 Lime Valley Road  
Shippensburg, PA 17879  
Telephone: Des Walk- 717/687-7475  
FAX 717/687-8824