

Public Auction Register

Closing Date Monday 5:00 P.M.
of each week's publication

SAT. JULY 30 - 9AM,
Household Items, Antiques
Collectibles, Tractor-
Auto- Tools & Guns.

Located 2 Miles East Of
Gratz, Upper Dauphin Co.,
Pa. (Watch For Auction

Sign Along Route 25 The
Day Of Sale). Owner,
Annie M. Klinger. Mike &
George Deibert, Aucts.

SAT. JULY 30 - 9AM,
Household & Personal
Items. Located RD#1,
Orwigsburg, Pa. Owner,
Helen Long. Dwight D. Mill-
er, Auct.

SAT. JULY 30 - 9AM
Horse, Wagons & Tools. 72
Baker Rd. Cochranville,
Chester Co., Pa. Off Rt. 41
take 796 S. turn right onto

Baker Rd. or off Rt. 1
bypass take 796 N. turn left
onto Baker Rd. & follow to
sale. Kenneth Griest, John
Stoltzfus, aucts.

SAT. JULY 30 - 9AM,
Pheasant Pride Farm
Machinery. Located RD 2,
Box 68, Martinsburg, Pa.
Blair Co. (Between Freder-
icksburg & Williamsburg
On Clover Creek Road).
Ralph R. Sheffy, Auct.

SAT. JULY 30 - 9AM, Shop
& Hand Tools, Antiques.

HH Goods, 1986 Coach-
man Chevy Motor Home,
1984 Ford Pick-Up, 1983
Mustang, Ford 3000 Trac-
tor, Hobart Welder 1800
Amp. Located 402 Spring
Valley Rd., Quarryville, Pa.
Take Rt. 222 So. Of Quar-
ryville App. 3 Mi. Turn Right
Onto Spring Valley Rd. To
3rd Place. Terms By, Mel-
vin V. Shenk Estate & Ruth
Musser Shenk, Estate.
Kreider, Kline & Good,
Aucts.

SAT. JULY 30 - 9AM Anti-
ques, carved carousel
horse, ant. autos incl. 32
Chev, oak, great smalls,
18th cen. still. Located in
the Schnecksville Fire co.

Lancaster Farming, Saturday, July 30, 1994-825

Pavilion, rt. 309, just N. of
Allentown, Pa. Tim Wothr-
ing, auct.

SAT. JULY 30 - 9:30AM
Real estate, Personal
Property, 849 Erb's Quarry
Rd., Litz, Pa. for Martin H.
Bucher, E.M. Murry Assoc.,
Aucts.

SAT. JULY 30 - 9:30AM
Door and Sash Manuf. and
Assembly Machinery, shop
equip & tools. Located
Turn Off Rt. 183 At Summit
Station At Blinking Light &
Travel West Onto Rt. 895
For Approx. 7 Mi. Toward
Pine Grove & Left Onto
Covered Bridge Rd. At
Race Track & Right At "Y"
Onto Camp Rd. For 1 Mi.
To Auction, Washington
Twp., Schuylkill Co., Pa.
Watch For Signs. Sale For,
Charles & Diane Goheen.
Kenneth P. Leiby, Auct.

SAT. JULY 30 - 10AM,
Antiques/Furniture,
Glassware/Collectibles &
Auto. Located 3608 North

Second St. Harrisburg, Pa.
From I-81 Take Front St.
South, Go 1 Block Turn Left
To Second St. Turn Left To
Auction. Owner, Winifred
Shirk. Kerry Pae Aucts.

SAT. JULY 30 - 10AM, 48
Acre Farm, Ford 8N Trac-
tor, Farm Equipment, Pick-
Up Trucks, Ariens Riding
Mower, Suzuki 230
4-Wheeler, Household
Goods & Tools. Located
Turn Off Rt. 183 At Summit
Station At Blinking Light &
Travel West Onto Rt. 895
For Approx. 7 Mi. Toward
Pine Grove & Left Onto
Covered Bridge Rd. At
Race Track & Right At "Y"
Onto Camp Rd. For 1 Mi.
To Auction, Washington
Twp., Schuylkill Co., Pa.
Watch For Signs. Sale For,
Charles & Diane Goheen.
Kenneth P. Leiby, Auct.

SAT. JULY 30 - 10AM
Complete liquidation of
Robert S. Heiser Plumbing,
Heating & Air Cond., Inc.
Selling from the former
Robert S. Heiser, Inc. 330
Walnut St., Williamsport,
Pa. Watch for auction signs
off of West 3rd st. at Anchor
Nissan. For Robert S.
Heiser. Scott Younkin &
Assoc. aucts.

SAT. JULY 30 - 10:01AM
Stoneylick Farm Farm
equip, shop tools, HH furn-
ishings, antiques & collect-
ibles, guns, garage equip,
horse & tack supplies, Lor-
rain shovel, Baxter 35' al
dump, Lawn & garden
equip & more. 1/2 mile E
of Sinnemahoning, Pa
along Hwy. Rt. 120 24 mi.
W. of Renou, Pa. 45 mile
S. of Coudersport, Pa.
Reed aucts.

SAT. JULY 30 - 11AM,
Real Estate, Antique &
Farm Machinery Auction.
Located At 3552 Truesdell
Road, 1/2 Mile South Of
Village Of Warsaw, Follow
Auction Arrows Off Rt. 19
At Curtis Road. Owner,
Estate Of Harold Hum-
phrey. Harris Wilcox, Inc.
Auct.

PUBLIC AUCTION

22 1/2 ACRES INDUSTRIAL REAL ESTATE HOUSEHOLD GOODS TOOLS FARM EQUIPMENT

LOCATION: 2469 Elias Avenue, Lebanon, N. Lebanon Twp., Lebanon Co., Pa. from Rt. 72 N. of Ebenezer past Heisey's Diner - left onto Heilmandale Rd. - left onto Elias Ave. to auction site at end of road.

REAL ESTATE 22 1/2 acres of land zoned industrial w/the following improvements. 2 1/2 story frame sided house w/1st floor having a kitchen/dining room combination w/modern cupboards & built in appliances, large living room, laundry room w/toilet facilities & enclosed porch. 2nd floor has 3 bedrooms & full bath. Other particulars include drilled well and on site septic system - full basement & attic - slate roof - Thermopane & storm windows - 2 porches - baseboard hot water heat with s/w hookup.

2 story frame barn w/attached concrete block 1 car garage. 1 1/2 story frame storage shed. Large mature trees - private setting at end of road - appx. 20 acres tillable ground an many other unlisted features. Real estate to be offered at 12:00. 10% down payment auction day w/balance due at settlement within 60 days. Inspection by calling 273-0657 (auction site) or 273-5129 (residence). Financing available to qualified buyers by calling LVNB - Rick Boudier 1-800-251-8403.

HARRY H. BACHMAN
AU-00003-L AUCTIONEER
138 College Avenue-Annville, PA 17003
(717) 867-1809

Auction By:
ROBERT MEYER

GEORGE CHRISTIANSON
Attorney 273-1651

**SATURDAY
SEPTEMBER 3, 1994
9:00 A.M.**

PUBLIC AUCTION

TWO APPROX. 10 AC. LOTS W/CREEK
FRONTAGE

**Friday Eve., AUGUST 5
7:00 P.M.**

Located approx. 3 mi S of East Waterford, along Rt. 75,
BUT WILL BE OFFERED FOR SALE at Juniata Markets,
Jct. of Rts 75 & old 22, at the blinking lights, 1 mi N of Port
Royal.

The 2 approx 10 ac lots, in Lack Twp., Juniata
Co. are ideal for building your dream home or
weekend retreat. With the Tuscarora Creek
running thru both lots and State Game Lands
only minutes away, these parcels are ideal for
the sportsman or good old country living. Each
parcel offers 297 ft of road frontage.

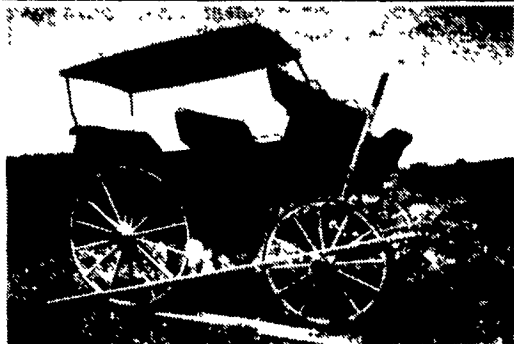
SHOW DATES: July 16 & 23 from 1 - 4 P.M.
or Ph. 717-527-2405 for an appt.

TERMS: 10% down at time of sale, bal in 30
days. Other terms at sale. No out of state
checks.

JOHN S. LANDIS,
Owner
Andrew L. Winder, Atty.

Long's Auction Service
Ph. 717-527-2405 or 4458
Fax 717-527-2941
AU001702L

NOT RESPONSIBLE FOR ACCIDENTS



Yellowstone Coach - Restored

LEBANON, PENNSYLVANIA

Martins Summer Auction

of approx. 250 Carriages, Sleighs & Antiques

**Thursday, August 11 &
Friday, August 12, 1994**

LEBANON AREA FAIRGROUNDS, Lebanon, PA



Milk Delivery Wagon - Original Condition

Directions: From Pennsylvania Turnpike to Exit 20 (Lebanon-Lancaster), (5.4 miles to auction site). After exiting turnpike, go North on Rte. 72 at 2nd traffic light turn right onto Rocherty Road and proceed to Fairgrounds. From the South: Take Rte. 72 North and proceed as described above. From Lebanon: Proceed on 10th Street (Rte. 72 South) until it intersects with Cornwall Road. (At Quality Inn) go South on Cornwall Road for about 2 miles, turn left at 1st traffic light and proceed to fairgrounds.

TENTATIVE AUCTION SCHEDULE

★ Thursday, Aug. 11th at 9 a.m. ★

Field Session H.D. farm machinery; farm wagons; orig., new & restored carriages & sleighs; carriage & wagon parts, including running gears, wagon wheels, poles, shafts, etc.; harness & parts; saddles; new & used tack; primitives & blacksmith tools & many other horse related items. Trailer load of new & used leather products from Smuckers Harness Shop, including riding & driving equipment, collars, harness, hames, English & western saddles and equine equipment.

Immediately following the field session, the auction will continue inside the sales pavilion.

★ Thursday, August 11th at 7 p.m. ★

Inside the Sales Pavilion Coaching appointments; new & used harness & parts; English & western saddles; riding & driving equipment; carriage lamps; whips & much more.

★ Friday, August 12th at 9 a.m. ★

Inside Sales Pavilion Child's hand pulled sleds & wagons; baby carriages; miniature horse, goat & dog sleighs, carts & wagons; flat bed utility & carriage trailers; Horse trailers and trucks.

Friday - Approx. 10:30 A.M. - Approx. 125 cataloged horse drawn coaches, carriages & sleighs including: hitch wagons; assorted styles of runabouts, top buggys, 4 & 6 pass. surreys; commercial vehicles; competition vehicles; pleasure driving carts & carriages; racing sulkys; show carriages; etc. These include pony, horse & draft horse sizes in varying conditions from

good restorable, original to restored museum quality & ready to use.

CATALOGS AVAILABLE FOR FRIDAY'S SESSION of horse drawn vehicles for \$15.00 (USA & Canada); \$20.00 (Overseas). Send payment now & the catalog will be mailed first class. Price lists also available approx. 4 weeks after the auction for \$5.00 each.

DOUBLE AXLE, 27' CARRIAGE TRAILER This carriage trailer is equipped with shocks for smooth ride; tie down storage boxes; 4 wheels have all new brakes including backer plates, spare tire. This trailer hauled many a load to and from Martins Auction.

Phillips 5-horse trailer, custom built with moveable horse partitions and area for large coach transport plus top side hay rack and inside dry storage for feed, harness, tools. Equipped with interior lights, mounting steps, locks, electric winch for loading coach. Fifth wheel and air brakes, all clearance lights, etc. Can be pulled by truck tractor or adapted for gooseneck hook-up.

SPECIAL INTEREST ITEMS

Printers wood cabinet with 39 wood trays. Printers cabinet with 12 trays. Large amount of printers letters in wood & lead & leaded print type. Floor model paper cutter, maker Advance. Printers cabinet with metal trays. Lady's side saddle, all orig., good useable condition. Collection of fine quality framed coaching prints. Training device for 4-in-hand driving; Assortment of bits (Buxton, liverpool, elbow, etc.) Crosby Wembley 17" Dressage saddle w/fittings. Many other good quality coaching accessories, driving & riding equipment.

TERMS: CASH, TRAVELERS CHECKS OR CERTIFIED CHECKS, US FUNDS ONLY. PERSONAL OR BUSINESS CHECKS ACCEPTED ONLY WITH A CURRENT BANK LETTER OF GUARANTEED PAYMENT TO MARTIN AUCTIONEERS, INC. and presented at time of registering for a buyers number. PRE-REGISTER BY CALLING OUR OFFICE ANY WEEKDAY (717) 768-8108. All items must be paid before or immediately following the auction on AUGUST 12, 1994. ALL ITEMS MUST BE REMOVED FROM LEBANON AREA FAIRGROUNDS BY 3 PM ON SATURDAY, AUGUST 13, 1994. NO EXCEPTIONS.

AUCTION SITE PHONE WEEK
OF SALE ONLY (717) 273-3795

RECEIVING TIMES WEEK OF SALE ONLY

Monday, Aug. 8th..... 12 noon - 5 pm

Tuesday, Aug. 9th..... 9 am - 6 pm

Wednesday, Aug. 10th..... 9 am - 8 pm

Thurs., Aug. 11th..... 8 am till start of auction

No Junk, Please - Your Consignments Are Welcome!

**NO BUYER'S PREMIUM
NO PRIVATE SALES ON
AUCTION GROUNDS!**

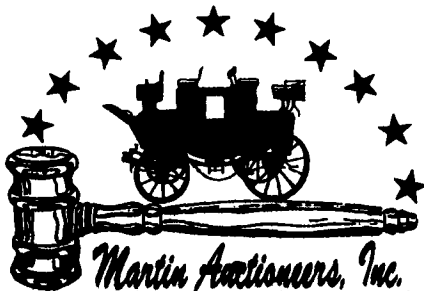
Larry L. & Paul Z. Martin, Jr.

P.O. BOX 477 • INTERCOURSE, PENNSYLVANIA 17543

PHONE: (717) 768-8108 • FAX: (717) 768-7714

RH-000048-L

CA-C-879



Framework of a landau; new wheels on rubber (not painted); slanted dashboard w/front wheel brake