

# Lancaster 4-H Horse, Pony Clubs Hold Round-Up

LITITZ (Lancaster Co.) — Saturday, July 16, 1994 was the Lancaster County 4-H Horse and Pony Clubs Round-Up. There are seven different Horse and Pony Clubs in Lancaster County containing 213 members in all. 101 of

these 213 members participated in the Round-Up show held at the Lower Hopewell Farm. The first three placing at the Round-Up show will go on to the District show in Lebanon on August 27, 1994 at 8:00 a.m. The first two

placing at the District show will go on to the State show held at the Farm Show Complex in Harrisburg, October 28-30. The results are as follows:

Grooming & Showmanship 12 yrs. & Under- 1. Sara Harris, 2. Desiree Cisney, 3. Jennifer Talbot.



The Lancaster County 4-H team winners are from left, Samara Shuster-Edelson, Boots & Saddles; Jennifer Goodman, Boots & Saddles; and Holly Sanderson, Broken Bit.

Grooming & Showmanship 13-15- 1. Allison Eberly, 2. Holly Sanderson, 3. Nathan Stoltzfus.

Grooming & Showmanship 16 yrs. & Older- 1. Megan East, 2. Karl Moyer, 3. Priscilla Weber.

Open Trail Pony- 1. Jennifer Talbot, 2. Emily Just, 3. John Snyder

Open Trail Horse- 1. Holly Sanderson, 2. Jennifer Goodman, 3. Allison Eberly.

County Team- 1. Samara Shuster-Edelson, Jennifer Goodman & Holly Sanderson, 2. Erin Rife, Tye Gantz & Allison Longenecker, 3. Christin Cavanaugh, Stephanie Smith & Stacey Cavanaugh

Pleasure Pairs- 1. Abbey Hershey & Kar Moyer, 2. Jennifer Goodman & Holly Sanderson, 3. Erin Rife & Tye Gantz.

Stock Seat Equitation Jr.- 1. Jennifer Goodman, 2. Abbey Hershey, 3. Sara Harris.

Stock Seat Equitation Sr.- 1. Samara Shuster-Edelson, 2. Daniel Talbot, 3. Allison Eberly.

Western Pleasure Ponies (12.2 hands & under)- 1. John Snyder, 2. Melissa Anspach

Western Pleasure Ponies (12.2 & not over 14.0 hands)- 1. Jennifer Talbot, 2. Kristen Kauffman, 3. Julie Anspach.

Western Pleasure Horses (Over 14.0 hands) Jr. Rider- 1. Jennifer Goodman, 2. Sara Harris, 3. Abbey Hershey

Western Pleasure Horse (Over 14.0 hands) Sr. Rider- 1. Allison Eberly, 2. Daniel Talbot, 3. Samara Shuster-Edelson

Western Riding- 1. Abbey Hershey, 2. Jennifer Goodman, 3. Jodell Stahl

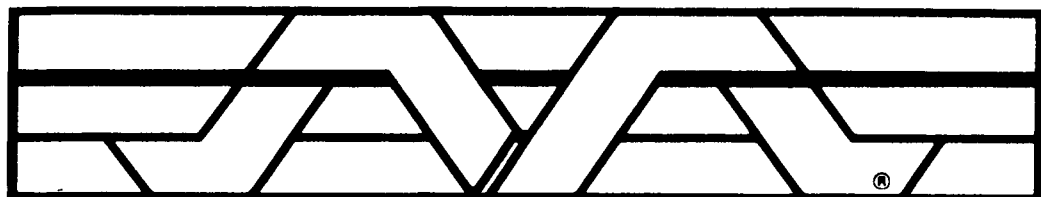
Reining- 1. Jennifer Goodman, 2. John Kroener.

Pole Bending Pony- 1. John Snyder, 2. Tim Goodman, 3. Evan Vold

Pole Bending Horse- 1. Keith Miller, 2. Kristen Miller, 3. Barry Gochnauer

Clover Leaf Barrel Race Pony- 1. John Snyder, 2. Tim Goodman, 3. Evan Vold

(Turn to Page A32)



## Mi-T-M® CORPORATION

PLUS  
Binkley & Hurst Bros. Inc.  
Equals

**Toughest  
cleaning jobs  
made  
easy!**



\*Mi-T-M will provide you with a pressure washer designed for your unique pressure washer needs.

\* Binkley and Hurst Bros. Inc. will provide you with the prompt and courteous service you deserve.

*Call us today and let us help you get the right machine for your job!*

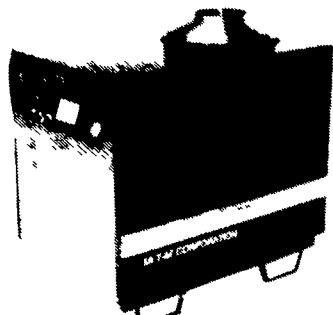
Large inventory giving you quick delivery  
**CALL US FOR A FREE DEMO.**



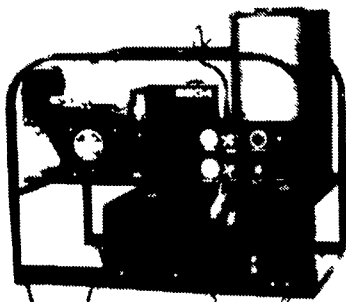
Cold water gas powered up to 4000 psi, Also electric



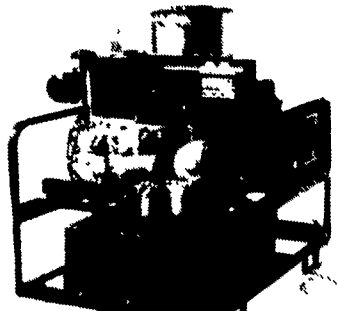
Hot water electric up to 3000 psi



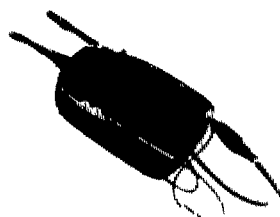
Stationary LP, or Natural Gas Hotwater electric



Gas powered skid hot water units (wheel kits are available)



Diesel powered skid hot water units (wheel kits are available)



1200 PSI Electric Handy Homeowners unit only \$395<sup>00</sup>

**BINKLEY & HURST  
BROS. INC.**

133 Rothsville Station Rd.  
Lititz, PA 17543  
(717) 626-4705

1-800-IT-PAYS U



After Hours Emergency Call: (717) 626-0885 (717) 626-5159 (717) 859-8768  
Machinery Sales: M-F 7 to 5 Sat. 7 to 11:30 Sun. Closed - Lord's Day

Farm Plan  
A Service of FPC Financial

**Summer Clearance  
'95 Are Coming!**



**The Suzuki QuadRunner F250**

Roll away your workday on the dependable Suzuki QuadRunner® F250.

- User-friendly features include electric start and an automatic clutch
- Rugged 246cc 4-stroke engine pumps out plenty of low-end torque
- Operator comfort provided by four-wheel independent suspension system.
- Ready for work with full-size cargo racks and trailer hitch

Suzuki QuadRunner ATVs may be used only by those aged 16 and older. Suzuki highly recommends that all ATV riders take a training course. We'll even pay for it! For safety and training course information, see your dealer or call the SVIA at 1-800-852-5344. ATVs can be hazardous to operate. For your safety, always wear a helmet, eye protection and protective clothing. Never ride on paved surfaces or public roads. Never carry passengers or engage in stunt riding. Riding and alcohol or other drugs don't mix. Avoid excessive speeds. Be extra careful on difficult terrain. Along with concerned conservationists everywhere, Suzuki urges you to "TREAD LIGHTLY" on public and private land. Preserve your future riding opportunities by showing respect for the environment, local laws and the rights of others when you ride. Professional rider pictured.

**M & S SALES & SERVICE, INC.**

R.D. 1, NEW HOLLAND, PA 17557

(1 1/2 Miles West of Blue Ball on Rt. 322)

717-354-4726

Mon., Wed., Thurs., Fri. 8-5

Tues. 8-5, Sat. 9-3



**SUZUKI.**

The ride you've been waiting for™