

# Farm Photographs Of 1994 Dairy Of Distinction Winners

## SNYDER



LEE AND SANDRA SHAFFER

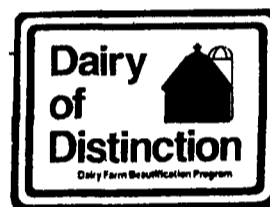
The Homestead farm of Lee and Sandra Shaffer has been in the family since 1868. They farm 700 acres and milk 140 Holstein cows that average over 17,000 lbs. of milk and 700 lbs. of butterfat. And Lee has several Brown Swiss cows as pets. In addition, they raise all the young stock, including the bulls. Since the farm is located in a developing area near Sellingsgrove, they try to be good neighbors with the urban community by plowing in the manure as soon as it is applied. Good hired help is essential on the farm, and office work continues to increase with government regulations.

## SOMERSET



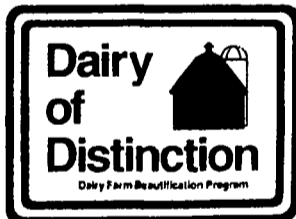
NEVIN AND DOLORES MITCHELL

Nevin and Dolores Mitchell started on this new Dairy of Distinction 29 years ago. Located near Berlin in Somerset County, it is known as Crossroads Farm. With their son Jamle, they milk 50 Holsteins and have 30 young stock they are raising as replacements. The herd average is 20,380lbs. They have a stantion barn with pipeline milkers.



# H&S BI-FOLD WHEEL RAKE

FOUR MODELS TO CHOOSE FROM— A SIZE FOR EVERY OPERATION



**Congratulations  
To The 1994 Dairy Of  
Distinction Award Winners!**



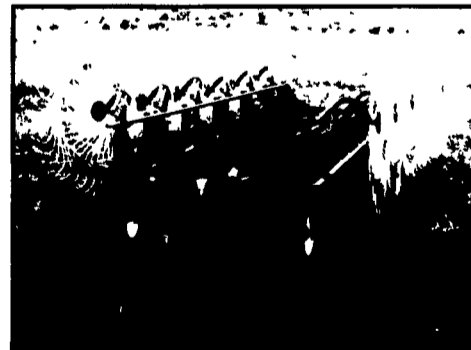
The H&S 12 WHEEL HYDRAULIC OPENING IS PICTURED.

GAUGE WHEELS AND JACK ARE STANDARD EQUIPMENT. RAKE WHEELS ARE INDIVIDUALLY MOUNTED TO ALLOW THEM TO FOLLOW THE CONTOURS IN THE GROUND. PROVIDES SMOOTH CLEAN RAKING. OPTIONAL CENTER KICKER WHEEL AVAILABLE—USED WHEN RAKING 3 ROWS TOGETHER.

### SPECIFICATIONS

OVERALL DIAMETER OF FINGER WHEELS 55"  
 NUMBER OF TEETH PER WHEEL 40  
 7MM DIAMETER IN THE RAKE TEETH  
 RAKE WHEELS—HUBS WITH TAPERED ROLLER BEARINGS AND DUST COVERS  
 TIRE SIZE 15"

MODEL	ADJUSTABLE RAKING WIDTHS	TRANSPORT WIDTH
8 WHEEL MANUAL	12'6" - 17'2"	9'6"
12 WHEEL MANUAL	19' - 24'	9'8"
12 WHEEL HYDRAULIC	18' - 24'	9'8"
16 WHEEL HYDRAULIC	24'6" - 31'6"	9'10"



EASY TO TRANSPORT

- ADDISON FARM & INDUSTRIAL  
Addison, PA
- BANGOR IMPLEMENT  
Bangor, PA
- BARTOSEK AGRI S&S  
West Springfield, PA
- BARRETT EQUIPMENT  
Smicksburg, PA
- BENEDICT'S FORD TRACTOR  
Wellsboro, PA
- JOHN BROWN EQUIP.  
Perryopolis, PA
- D&E EQUIPMENT  
Bloomsburg, PA

- DEERFIELD AG & TURF INC.  
Watertown, PA
- DOTTERER EQUIP.  
Mill Hill, PA
- ECKROTH BROS. FARM EQUIP.  
New Ringgold, PA
- FINCH IMP.  
Hanover, PA
- FLINNER EQUIP.  
Prospect, PA

- GALLUP & TENHAKEN  
Clymer, NY
- HARTS FARM EQUIP.  
Cochranston, PA
- HESS FARM EQUIP.  
Canton, PA
- HETRICK FARM SUPPLY  
New Bethlehem, PA

- HOOVER EQPT.  
Tyrone, PA
- LOST CREEK IMP.  
Oaklands Mills, PA
- MCDOWELL FARM & IMP.  
Grove City, PA
- MARSHALL MACHINERY  
Honesdale, PA

- NEW ALEXANDRIA FARM SUPPLY  
New Alexandria, PA
- SMITH IMP. INC.  
Mercersburg, PA
- SOMERSET BARN SUPPLY  
Somerset, PA
- TRIPLE H TRACTOR  
Peach Bottom, PA
- WATSON INC.  
Sharon, PA
- ROBERT WILKINS  
Saxton, PA
- YILLAT FARM SUPPLY  
Washington, PA

For More Information, Contact Your Local Dealer Or

## H & S Manufacturing, Co.

Ripley, NY (716) 736-7595

