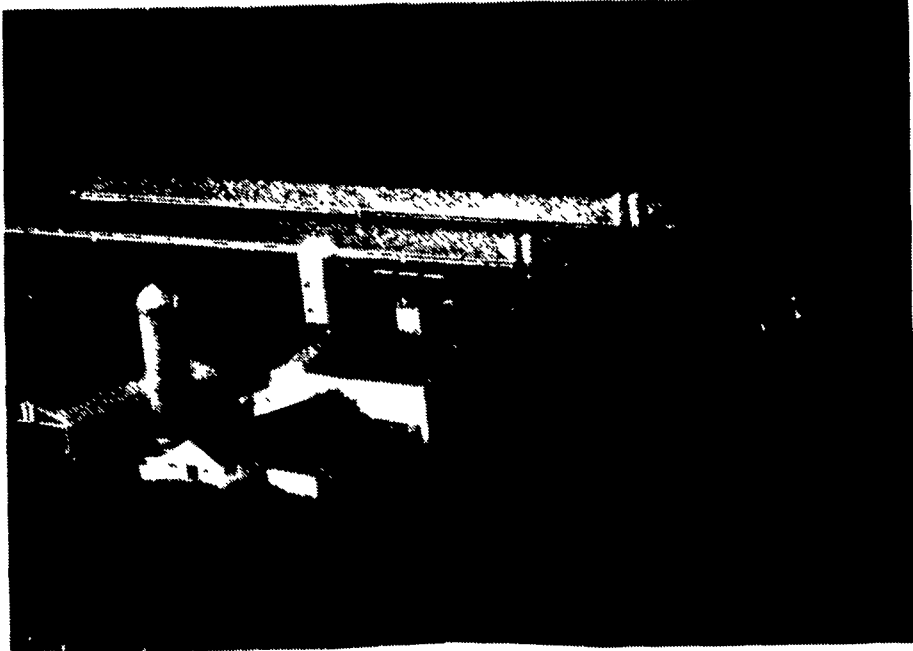


Farm Photographs Of 1994 Dairy Of Distinction Winners

LANCASTER



RAY AND REBA RANCK

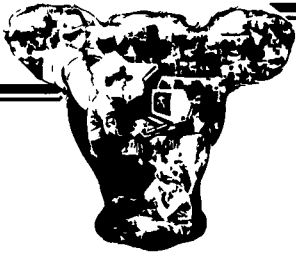
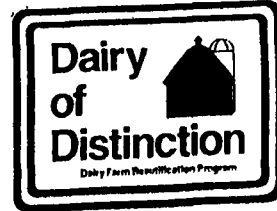
Before "B&B" became widely recognized as a short term for "bed and breakfast," J. Ray and Reba Ranch were hosting guests at their large, red brick farmhouse that J. Ray's great grandfather built in 1863. The Paradise location was ideal for such a venture because of the heavy tourist trade of the Amish-curious and those seeking the serenity of backroad production agriculture and its crafts, food, and the amiable nature of many of the people. Many things have changed since the couple started taking in tourists in 1971. Today, they average 1,400 guests per year to the dairy farm with its big white farm barn. The attractive farming site has a large lawn, big shade maples around the house, a gazebo, lots of flower beds, landscaping, and a guest house. The farmhouse itself has 19 rooms with six bedrooms for tourists. It is a working farm and they milk about 60 Holstein cows, registered and grade, that averaged in June 22,715 pounds of milk, 811 pounds of fat and 733 pounds of protein. The oldest of the couple's three children, Rob, works at the home farm full time. They have a daughter Rhonda who is a teacher at Locust Grove Mennonite School, and a son Ryan, who just finished college, was just married and who works as a broiler supervisor in the poultry division of Pennfield Corporation. J. Ray has lived on the farm his entire life and has farmed its 100 acres since 1962. He rents an additional 40 acres.

LEBANON



GEORGE AND MARY TROUTMAN

The 200-acre farm of George and Mary Troutman is located near Myerstown in Lebanon County. They have registered Holstein cows, 94 in milk and about that many more young stock. The herd average is 21,107m. The farm has been in the family at least three generations, and the Troutmans believe it's important to keep efficient and work together. They give credit to their hired help, Dan and Norma Bausher, for a job well-done with the cows.



Water Quality An IMPORTANT Ingredient In Livestock Management

It's a fact! Contaminated water can have a costly effect on your livestock and poultry performance. Our years of experience plus hundreds of farm related treatment systems has proven the validity and practicality of correcting contaminated water.

Call us today for treatment of:

- * Nitrates * Bacteria * Iron * Sulfates
- * pH - Acidity/Alkalinity

**Martin Water
Conditioning Co.**

SPECIALISTS IN FARM WATER TREATMENT

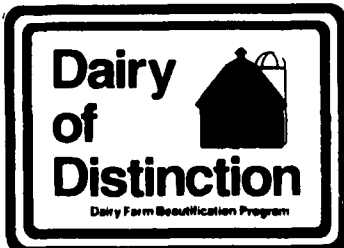
548 New Holland Ave.
Lancaster, PA 17602
(717) 393-3612
Along Rte. 23



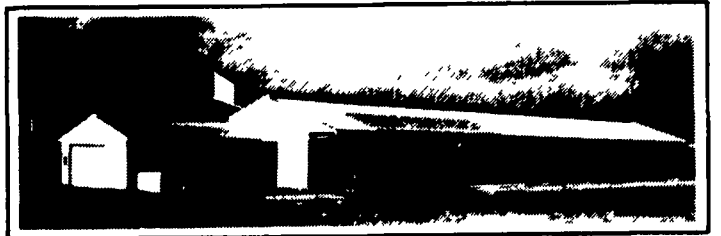
740 E. Lincoln Ave.
Myerstown, PA 17067
(717) 866-7555
Along Rte. 422

MARTIN WATER CONDITIONING CO.

CONGRATULATES
ALL
DAIRY OF DISTINCTION
WINNERS



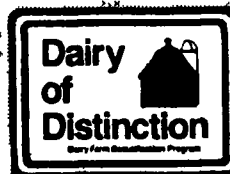
AGRI-INC. Custom Built Farm Buildings Designed To Your Needs



HEIFER AND CALF RAISING FACILITY

Let Our Experience Work For You

- Dairy Complexes And Replacement Stock Facilities
- Workshop And Machinery Storage Buildings
- Horse Stall Barns And Riding Arenas
- Timber Column Buildings For Light Commercial



We Proudly Salute
The Dairy Of Distinction
Farm Award Winners



AGRI-INC. The Construction Professionals

151 E. Farmersville Road, Ephrata, PA 17522 • (717) 354-4271

Serving The Agricultural
Industry For Over 25 Years

