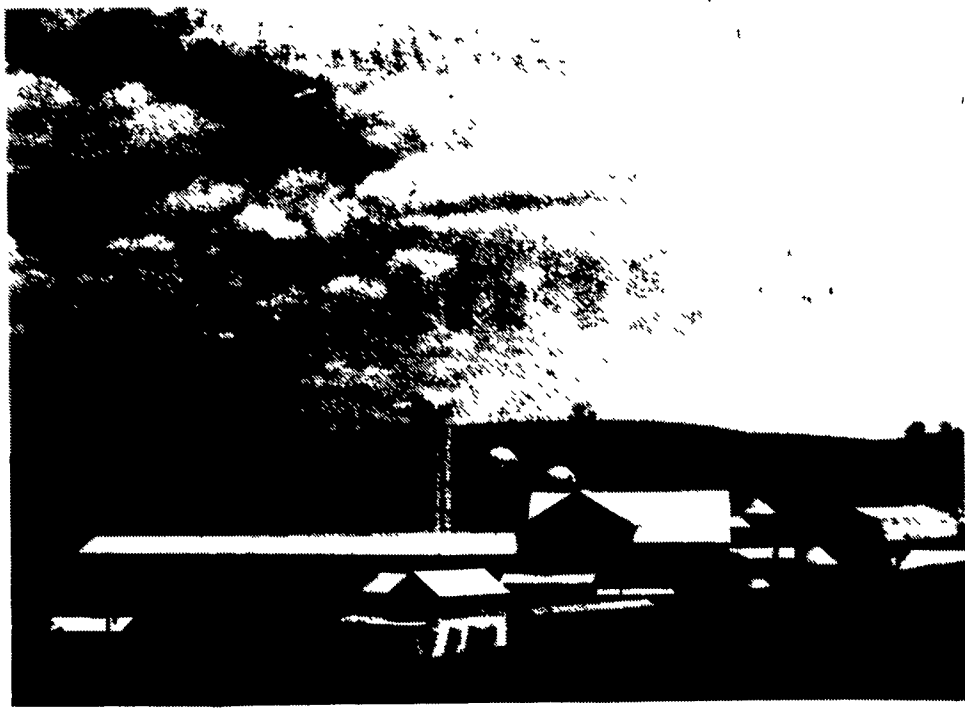


Farm Photographs Of 1994 Dairy Of Distinction Winners



BEDFORD

RALPH A. AND REBA CHAMBERLAIN AND SONS

Recently, the Chamberlain Dairy of Distinction Farm installed a 50-capacity, 44-foot by 180-foot freestall barn. Plans in the future may include a milking parlor, according to Ralph Chamberlain, an operator with the Ralph A. and Reba Chamberlain and Sons Farm in Clearville, Bedford County. The farm operates a 346-acre (tillable) farm, including mostly grade Holsteins (72), Guernseys (3), Ayrshires (4), Jerseys (11), with about 168 replacement and bull stock. The farm, more than 100 years old, has been in the family since about 1959. Ralph and Reba farm with sons Lynn, 37 and Barry, 30, together with Lynn's sons Brandon, 16 and Derrick, 12.

Dairies Of Distinction Listed

(Continued from Page 1)

excellence set by the program.

For further information on the Dairy of Distinction program, contact the American Dairy Association and Dairy Council Inc. at (717) 283-2204.

The list of winners is as follows:

District 11 Charles Farley, McKean; Richard C. Payne, Springboro.

District 12 Denton Powell, Criders Corners

District 13 James and Pam Berry Jr., Brookville; Richard & Judy Trinca, Rebersburg.

District 14 Carl C. and Carol

Barnett, Todd; Mark E. and Raymond R. Yoder, Imler; Nevin and Dolores Mitchell, Berlin; Paul D. and Karen Turner, New Enterprise; Ralph A. Chamberlain Family, Clearville; Randy and Karen Huntsman, Martinsburg; Samuel E. Yoder, Mapleton Depot; Terry Hawn, Huntingdon; Tim R. and Marlene Peachey, Petersburg; Willard Yoder Jr., Huntingdon.

District 15 Glenn and Bernice Myers, Newburg.

District 16 Harold B. and Janet M. Shearer, East Waterford; Lester E. and Hazel Fleisher, Newport; Ronald and Desi Mummah, Port Royal; R. Dale Groff, Dalmatia; Lee and Sandra Shaffer,

Selinsgrove.

District 17 Henry and Dorothy Abma, Troy.

District 18 Louis and Natalie Hawley, Montrose; James A. Rogers Family, Springville; Arthur H. and Kelly Wolfe, Springville.

District 19 David R. Wenger, Manheim; J. Ray and Reba Ranck, Paradise; Philip G. Crouse, Stevens; Samel F. and Marian B. Long, Peach Bottom; Dave and Joe Garber, Lancaster.

District 20 George and Mary Troutman, Myerstown; Joseph Greggo, Pen Argyl; Norman and Audrey Koehler, Bangor.

Trincas Combine

(Continued from Page 1)

cover the work here right now. So we are tied down. But during crop time we wouldn't go anyway.

I'm still looking for the secret to farming. It's a lot of work. Not every crop or cow turns out the way you plan. We try to keep the cows comfortable with extra bedding and good ventilation. We try to breed better cows, and we are consistent in our milking times.

Johnstonbaugh agrees. "Herd health is our major concern," he said. "A healthy animal is a working animal. They take dairy care. We watch feed rations several times a week and spend a lot of time in heat detection. We have

pregnancy checks every two weeks. But generally you must know your cows."

The Trincas cover 260 acres and raise soybeans, corn, and alfalfa. The soybeans are roasted on the farm, and little or no protein is bought. They sell hay and corn on the side.

As you travel along Route 192 east of Rebersburg, you will notice the well-manicured lawn and the clean-looking white farm buildings. And when you do, you will see why this is one of the new 1994 Dairy of Distinction farms in Pennsylvania. It's certainly a good representative example to consumers of "where milk comes from."

LANCASTER FORD TRACTOR

UNDER THE

SIGN OF QUALITY



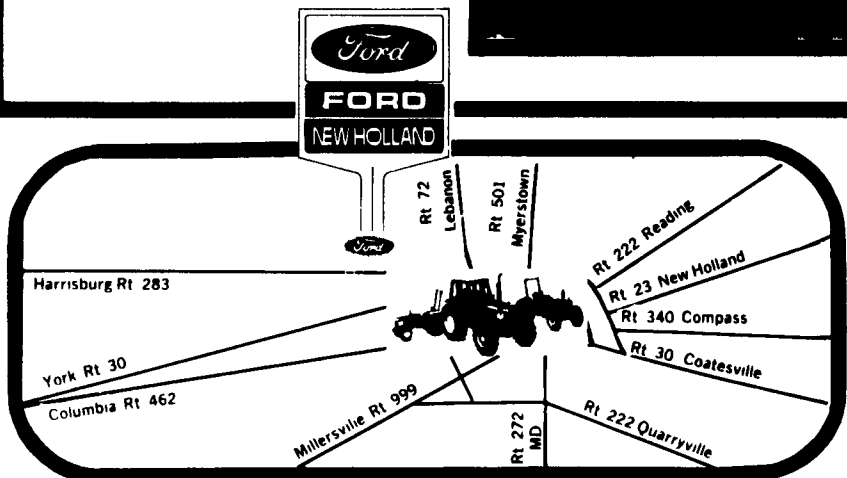
**Quality
Genuine
Replacement
Parts**

**Quality
Factory Trained
Mechanics.
Means Quality
Service For You.**



**Quality
Ford New Holland
Equipment**

- Lawn & Garden
- Farm
- Industrial
- Skid Loaders
- Mowing Equip.
- Landscaping Equip.



LANCASTER FORD TRACTOR, INC.

YOUR LANCASTER COUNTY RELIABLES

1655 Rohrerstown Rd. Just Off Route 283

Lancaster, PA 17601

Phone (717) 569-7063

