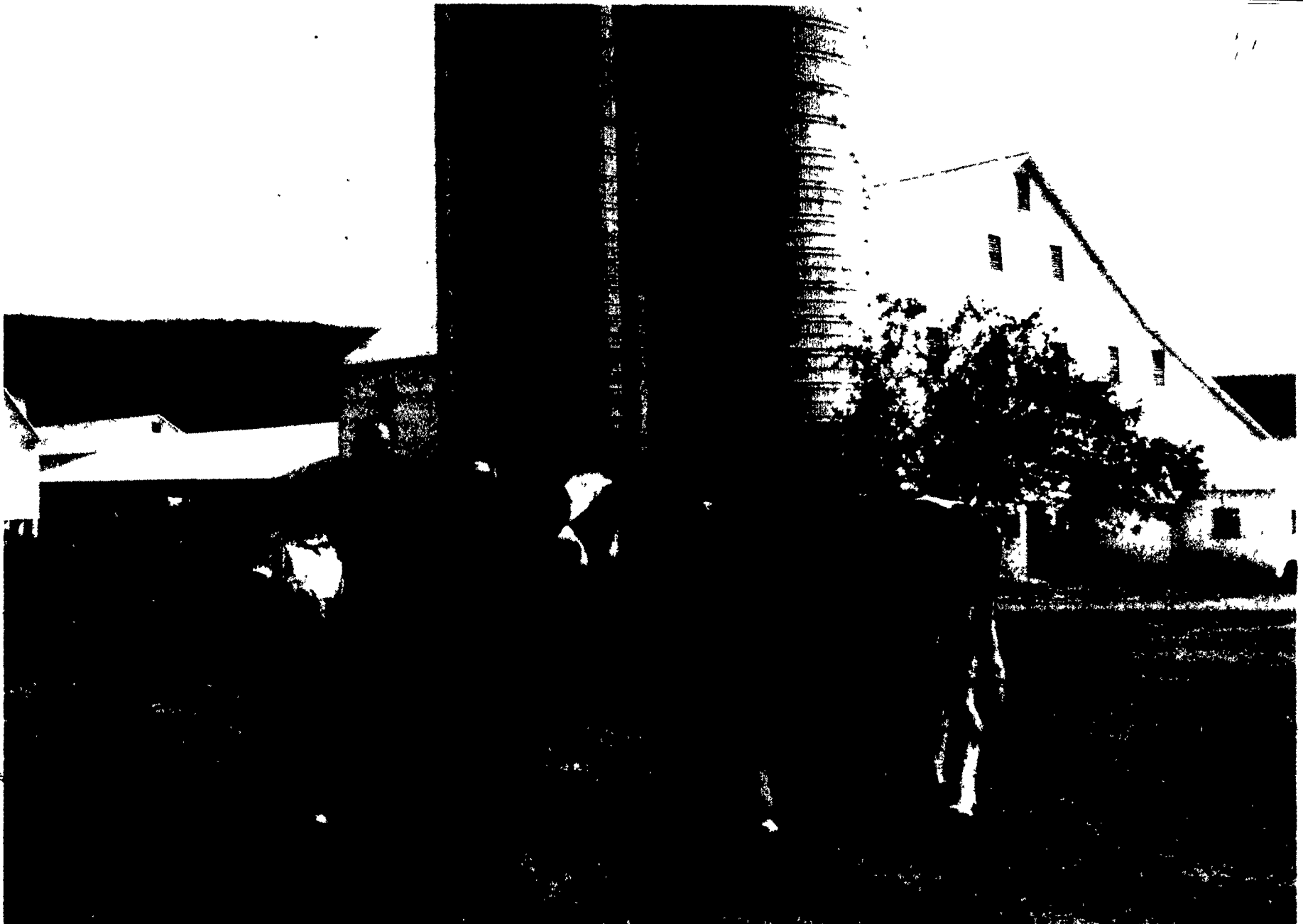


# Lancaster Farming

Dairy of Distinction Supplement to Lancaster Farming, Saturday, July 30, 1994



Judy and Richard Trinca and herdsman Darl Johnstonbaugh are shown on the lawn of their new Dairy of Distinction farm, located east of Rebersburg in Centre County. Pulled out to represent the beautiful Trinca registered Holstein herd is Trinca's Royalty Crystal, VG-87 with milk records to

4y 29,223m 916f 891p and now has milked 142 lbs. per day. The herd includes several excellent and many very good cows, all homebred. Photo by Everett Newswanger, managing editor.

## Trincas Combine Beautiful Cows, Lovely Setting To Show Source Of Milk To Consumers

**EVERETT NEWSWANGER**  
Managing Editor

REBERSBURG (Centre Co.) — When you walk into Richard and Judy Trinca's registered Holstein dairy barn, you can easily see why this has been the top-producing herd in the county for the past two years. The cows are big and strong with dairy character and fancy udders. And several excellent, and a lot of very good, classified cows are stabled in the long tie-stall barn, too.

Milk production averages over 25,000 lbs., and the BAA classification score is 104.3. In the June issue of *Profiles* "Trincas' Trio" advertisement includes three excellent cows all with over 1,032f, and records that average 30,000m. Trinca's Tempo Tulip peaked at 158 lbs. for the second year and was still milking 140 lbs. seven months later. Needless to say, Tulip is projected to reach nearly 40,000 lbs. of milk and 1,200f by the end of this lactation. Richard and Judy both grew up

on dairy farms and remember when rotational grazing was the recommended way to feed cows. "We went through that 40 years ago," Judy said. "We had three or four pastures and rotated the cows every few days. Now they are back to recommending this again with some new innovations."

"For us, we have the equipment and need to store feed for the winter," Richard added. "So we haven't gone back to rotational grazing at this time. We did switch to TMR several years ago, but we didn't see as much increase in milk production as some people said we would get. We were feeding very well before we changed so I guess that is why it didn't make as much difference for us. TMR did allow us to use more silage, so our work load baling hay was reduced."

Richard's father was a "better than average" dairyman in New Jersey and milked 100 cows. This was considered a very large herd at the time. But the farm was sold, and Richard began life as a dairy

farmer by renting local farms around his home.

In 1973 the Trincas had the opportunity to buy this farm in Centre Co., Pennsylvania, and have since bought some additional acres as they became available. The

soil is limestone with some sandstone mixed in.

"We can grow good alfalfa here, and our corn yields are from 150 to 180 bu.," Richard said. "I kinda like to farm. But sometimes I have second thoughts. My brothers are

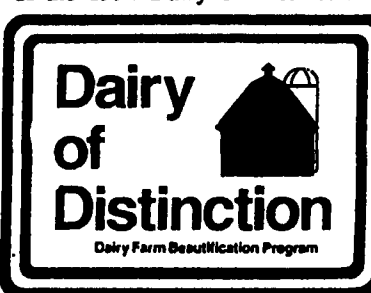
builders in New Jersey, and they take long vacations.

"I must say, we have taken vacations, too, when we had extra hired help. But it takes both our herdsman, Darl Johnstonbaugh, and I to

(Turn to Page 2)

## 1994 Pennsylvania Dairies Of Distinction Listed

KINGSTOWN (LUZERN CO.) — The Northeast Dairy Farm Beautification Program announced Pennsylvania winners of the 1994 Dairy of Distinction



award this week. Thirty-three farms in Pennsylvania have been selected as new recipients of this honored award.

The Dairy of Distinction program has been operating in Pennsylvania since 1986. Including this year's winners, a total of 555 Pennsylvania dairy farms have been recognized through this program.

The program was established in New York State in 1983, and has since spread to Pennsylvania and New Jersey. The program was developed to recognize farms

which maintain a high quality farm appearance.

Farms that apply are judged on the roadside appearance of buildings, grounds and surroundings. The winning farms receive attractive 18x24-inch signs which are placed on the roadside. In addition, Lancaster Farming gives each winner an 11x14 photograph of the farm.

Winning entries are judged annually to insure that they continue to meet the standards of

(Turn to Page 2)