

Kutztown Produce Auction

Fleetwood, PA
July 22-28

Sat. Hay and Straw at 9:00 a.m. followed by produce

Report Supplied by Auction

APPLES: 1.25-4.00 ¼ BU., 4.00-5.50 BU.
APRICOTS: 4.50-13.50 ¼ BU., 8.50 FLAT.
BEANS: GREEN 2.00-12.50 ¼ BU., 8.00-15.00 BU., YELLOW 3.00-14.00 ¼ BU., 6.00-12.00 BU.
BEETS: .25-.75 BUNCH, 4.00-6.50 ¼ BU., 12.50 BU.
BLUEBERRIES: 5.00-12.00 12 PINT FLAT.
CABBAGE: .80 HEAD, 3.00-6.00 BAG, 4.50 BOX.
CANTALOPES: .08-1.65 EACH.
CHERRIES: SOUR 3.00-4.50 8 QT. FLAT.
CUCUMBERS: .50-5.00 ¼ BU., 2.00-5.00 BU.
EGGPLANT: 3.00-9.00 ¼ BU., 11.00 BU.
EGGS: 30-.85 DOZ.
GARLIC: .70-1.30 LB.
HONEYDEW MELONS: 1.50-2.50 BOX.
LIMA BEANS: 8.00-16.00 ¼ BU.
NECTARINES: 8.00 FLAT.
ONIONS: 1.00-4.00 ¼ BU.
PARSLEY: 2.50 ¼ BU., 5.00 BU.
PEACHES: 2.50-19.00 ¼ BU.
PEPPERS: 2.50-5.75 ¼ BU., 5.50-11.00 BU.; HOT 2.50-17.50 ¼ BU.
PICKLES: 3.00-10.00 ¼ BU.
PLUMS: 4.00-13.00 ¼ BU.
POTATOES: WHITE 3.00-6.50 ¼ BU., 2.50-7.00 8 QT. FLAT, 40-70 5 LBS., 70 10 LBS., .85-.95 50 LBS.; RED .80 5 LBS., 80 10 LBS., .85-.95 50 LBS.
RASPBERRIES: RED .95-1.70 ¼ PINT.
RHUBARB: 4.50 20 LBS.
SQUASH: YELLOW 1.00-3.75 ¼ BU.; WINTER 1.00-2.00 ¼ BU.
STRAWBERRIES: 1.25-1.75 PINT.
SWEET CORN: .50-12.00 BAG.
TOMATOES: 3.00-6.00 10 LB. BOX, 5.00-25.00 25 LB. BOX; CHERRY 3.75-8.00 12 PINT FLAT.
WATERMELON: .40-3.30 EACH; YELLOW DOLLS 2.50-3.50; SEEDLESS 2.00-4.50 EACH.
ZUCCHINI: GREEN .50-5.00 ¼ BU.
CUT FLOWERS: .70-.85 BUNCH, 2.50-4.50 BUCKET.

GLADIOLAS: .10-.36 EACH.
SHRUBS AND TREES: .75-3.00 EACH.
HERBS: 2.00-4.00 BUCKET.
AUCTION DAYS WILL BE MONDAY THROUGH FRIDAY AT 9:30 A.M. HAY AND STRAW SATURDAY AT 9 A.M., FOLLOWED BY PRODUCE.

Leola Produce Auction

Leola, PA
July 26, 1994

Report Supplied by Auction

APPLES: 2.25-4.50 ¼ BU.
BEANS: GREEN 14.00-24.00 1 1/9 BU., YELLOW 10.00-18.00 1 1/9 BU., ROMA 5.75-9.50 1 1/9 BU., LIMA 20.00-35.00 1 1/9 BU.
BEETS: 2.75-4.25 15 COUNT BUNCH, LOOSE 4.25-6.25 1 1/9 BU.
BLUEBERRIES: 12.00-16.00 12 PINT FLAT.
CABBAGE: GREEN .15-.35 HEAD, 2.75-3.50 CRATE; RED 2.75-4.50 CRATE.
CANTALOPES: SMALL TO MED. .10-.35 EACH, LARGE TO EXTRA LARGE .40-70 EACH.
CUCUMBERS: 3.25-5.75 1 1/9 BU. #1, 2.00-4.00 1 1/9 #2.
EGGPLANT: 4.75-7.50 1 1/9 BU.
HONEYDEW AND HONEYLOPES: SMALL TO MEDIUM .60-.85 EACH, LARGE TO EX. LARGE .85-1.50 EACH.
PEPPERS: SMALL TO MEDIUM GREEN 2.00-3.75 1 1/9 BU., LARGE TO EXTRA LARGE 4.00-6.50 1 1/9 BU., SUNTAN 3.00-5.75 1 1/9 BU.; SWEET FRIAR AND HOT 1.75-4.25 ¼ BU.
PICKLES: SMALL TO MED. 5.25-8.25 ¼ BU., LARGE TO EX. LARGE 3.25-5.00 ¼ BU.
PLUMS: 3.25-6.50 8 QT. FLAT.
POTATOES: RED AND WHITE 2.75-5.75 25 LBS., 6.00-11.50 50 LBS.
SQUASH: YELLOW STRAIGHT-NECK 2.25-4.50 ¼ BU., PATTYPAN EXTRA SMALL 8.00-12.00 10 LBS.
SWEET CORN: WHITE .60-1.20 DOZ., YELLOW AND BI-COLOR .60-1.20 DOZ.
TOMATOES: SMALL TO MEDIUM 4.00-7.50 25 LBS. #1, LARGE TO EX. LARGE 7.25-14.50 25 LBS. #1; CHERRY 4.25-7.50 12 PINT FLAT; PLUM 3.00-5.50 25 LBS.
WATERMELON: YELLOW BABIES SMALL TO MEDIUM .30-.60 EACH, LARGE TO EXTRA LARGE .60-1.10

EACH; SEEDLESS SMALL TO MED. 1.50-2.25 EACH, LARGE TO EX. LARGE 2.25-3.75 EACH; SANGRIA SMALL TO MEDIUM 1.25-2.45 EACH, LARGE TO EX. LARGE 2.50-3.75 EACH; CRIMSON SMALL TO MEDIUM .85-1.50 EACH, LARGE TO EXTRA LARGE 1.50-3.25 EACH.
ZUCCHINI: GREEN SMALL TO MEDIUM 3.75-5.75 ¼ BU., LARGE TO EXTRA LARGE 2.00-3.75 ¼ BU., SMALL TO MEDIUM YELLOW 3.25-4.25 ¼ BU., LARGE TO EXTRA LARGE 2.75-3.00.
SALE DAYS NEXT WEEK ARE MONDAY THROUGH SATURDAY AT 9 A.M.

Philadelphia Potato & Onion

Philadelphia, Pa.

Wednesday, July 27, 1994

ONIONS AND POTATOES
---ONIONS DRY: MARKET YELLOW LOWER, OTHERS ABOUT STEADY US#1 OR GENERALLY GOOD QUAL AND COND UNLESS OTHERWISE STATED. Yellow Granex GA 50 lb ctns jbo 26.00-28.00 NEW CROP Yellow Grano Type CA 50 lb sks jbo 9.00-10.00 fair cond 8.00 NC 50 lb sks jbo fair qual & cond 6.00-7.00 med fair qual 8.00 NM 50 lb sks jbo 9.00-10.00 TX 50 lb sks jbo 9.00-10.00 rpk sz 9.50-10.50 mstr cntr 20 2-lb mahaks rpk sz 11.00 WA 50 lb sks jbo 9.00-10.00 fair cond 8.00 Walla Walla Sweets WA 50 lb ctns jbo fair cond few 10.00-12.00 White TX 50 lb sks jbo 22.00-23.00 Red CA 25 lb sks jbo 12.00 med few 11.00 TX 25 lb sks jbo 10.00 med 8.00 ---POTATOES: MARKET ABOUT STEADY US#1 SZ A WASHED OR BRUSHED UNLESS OTHERWISE STATED Russet Burbank ID bid 10 5-lb flmbgs non sz A few 8.00 50 lb ctns 70s 19.00 80s 17.50-19.00 90s 13.00-14.00 few 15.00 100s 10.00-11.00 mostly 10.00 U.S. Two 50 lb sks 10 oz min 6.50 NV 50 lb ctns 70s 17.50 80s 17.50 90s 12.50-13.00 100s 9.50 70s 15.00-17.00 80s 15.00-16.50 90s 11.00-12.00 mostly 11.00 100s 9.00 WA 50 lb ctns 90s 11.0 100s 9.00 Round Red AL 50 lb sks 9.00-10.00 sz B fair cond 14.00 AZ 50 lb ctns 12.00-15.00 sz B 22.00 creamers few 32.00 CA 50 lb ctns 13.00-15.00 NJ 50 lb sks few 9.00-10.00 sz b few 10.00 TX 50 lb ctns 10.00-11.00 mostly 11.00 sz B 16.00-19.00 50 lb sks creamers few 28.00 Round White DE bid 5 10-lb sks 9.50-10.00 bid 10 5-lb sks 10.50-11.00 50 lb sks 8.00-8.50 lge 13.00 NJ 50 lb sks 8.00 Long White CA 50 lb ctns 14.00-15.00.

Westminster Livestock

Hagerstown, Md.

July 26, 1994

Report supplied by auction

SLAUGHTER COWS: 85 HEAD, .50-1.00 LOWER. UTILITY 43.00-47.50; HIGH DRESSING, 1 AT 51.75; CANNERS 39.00-43.00, FEW TO 45.00; SHELLY 39.00 DOWN.
BULLS: 9 HEAD. YG#1 1200 LBS. TO 60.50; YG#2 1200-1900 LBS. 53.50-57.50.
FED STEERS: 30 HEAD, 2.00 LOWER. HIGH CHOICE TO PRIME 1150-1400 LBS. 64.00-68.25; CHOICE 62.00-64.00; LOW CHOICE HOLSTEINS 1100-1400 LBS. 55.00-55.75.
FED HEIFERS: FEW OFFERED; CHOICE 900-1100 LBS. TO 62.50; SELECT 850-1050 LBS. 57.50-59.50.
VEAL CALVES: 176 HEAD. LOW CHOICE 180-300 LBS. 78.00-87.00; GOOD 70.00-80.00; CULLS 5.00-8.00 LOWER. 85-110 LBS. 45.00-55.00; 60-80 LBS. 40.00-50.00; WEAK/ROUGH 35.00 DOWN.
FARM CALVES: HOLSTEIN BULLS 10.00 LOWER. #1 95-120 LBS. 100.00-130.00; #2 80.00-95.00; 80-90 LBS. 55.00-75.00; HOLSTEIN HEIFERS, STRONG DEMAND. #1 85-120 LBS. 200.00-250.00; #2 75-100 LBS. 125.00-175.00; BEEF X BULLS OVER 95 LBS. TO 150.00; HEIFERS TO 122.00.
BOARS: 400-700 LBS. 26.50; 220-250 LBS. 29.00.
STOCK CATTLE: 129 HEAD, PRICES HIGHER. STEERS 200-400 LBS., FEW OFFERED; 400-650 LBS. FEW 68.00-78.00; 650-800 LBS. 65.00-70.00; HOLSTEINS 400-600 LBS. 53.00-62.00; 800-950 LBS. 51.00-54.00.
HEIFERS: 300-500 LBS. 65.00-77.00; 500-700 LBS. 60.00-67.00; 700-900 LBS. 55.00-61.00; HOL 300-500 LBS. 75.00-97.00.
BULLS: FEW 150-300 LBS. 80.00-99.00; 300-500 LBS. 70.00-86.00; 500-700 LBS. 60.00-70.00.
LAMBS: 25 HEAD, PRICES HIGHER. CHOICE 110-125 LBS. 76.00-81.00; 80-100 LBS. 83.00-88.00; 60-80 LBS. 87.00-94.00; GOOD 50-80 LBS. 80.00-85.00.
SHEEP: 26.00-35.00; FEW 37.00-43.00.
GOATS: LARGE 68.00-85.00; MEDIUM 40.00-60.00; SMALL FLESHY 30.00-45.00.
PIGS AND SHOATS: 50 HEAD, PRICES HIGHER. BY THE HEAD FROM TESTED HERDS, 25-40 LBS. 20.00-30.00; 40-60 LBS. 2 LOTS 3.00-37.00; 60-70 LBS. 1 LOT AT 40.00.
STOCK BOARS: 200-240 LBS. 29.50.
BUTCHER HOGS: 50 HEAD. US#1&3 215-260 LBS. 41.25-42.00; 8 HEAD 266 LBS. AT 39.25; 6 HEAD 205 LBS. AT 39.00.
SOWS: 25 HEAD. 300-500 LBS. 26.00-28.25; 500-700 LBS. 30.00-32.00.

St. Louis Cattle, Hog Report

Springfield, Il.

Monday, July 25, 1994

NATIONAL STOCKYARDS, ILLINOIS CATTLE AND CALVES 500. COMPARED TO LAST MONDAY SLAUGHTER STEERS 1.00 TO MOSTLY 1.50 LOWER, EXCEPT HOLSTEIN STEERS MOSTLY 2.00 LOWER. SLAUGHTER HEIFERS 1.50-2.00 LOWER. COWS 1.00 LOWER. BULLS STEADY.
SLAUGHTER STEERS: CHOICE 2-4 1050-1300 LBS. 63.50-65.00, 2-3 1075-1350 LBS. 65.00-66.00. MIXED SELECT AND CHOICE 2-3 950-1250 LBS. 60.50-63.50. SELECT 2-3 925-1250 LBS. 57.50-60.50. HOLSTEIN STEERS: FEW CHOICE 2-3 1275-1400 LBS. 56.00-58.00. LOAD EARLY AT 59.00. MIXED SELECT AND CHOICE 2-3 1075-1400 LBS. 52.00-56.00.
SLAUGHTER HEIFERS: CHOICE 2-4 900-1275 LBS. 62.50-64.00; 2-3 950-1250 LBS. 64.00-65.00; MIXED SELECT AND CHOICE 2-3 850-1175 LBS. 59.00-62.50. SELECT 2-3 825-1125 LBS. 56.00-59.00.
MIXED STEERS AND HEIFERS: CHOICE 2-4 1050-1250 LBS. 65.50-66.00.
SLAUGHTER COWS: BREAKING UTILITY AND COMMERCIAL 2-4 40.00-42.00; HIGH YIELDING BREAKING UTILITY 42.00-44.00. CUTTER AND BONING UTILITY 1-2 42.00-44.00; HIGH YIELDING CUTTER AND BONING UTILITY 1-2 44.00-45.00; CANNER AND LOW CUTTER 1-2 38.00-41.00; SHELLY CANNER 1-2 34.00-38.00.
BULLS: FEW YIELD GRADE 1-2 1200-1700 LBS. 52.00-58.00; INDIVIDUAL YIELD GRADE 1 AT 60.00.
THIS REPORT IS A SERVICE OF THE ILLINOIS DEPARTMENT OF AGRICULTURE LIVESTOCK AND GRAIN MARKET NEWS SERVICE, SPRINGFIELD, IL. (217) 782-4925.

New Holland Horses

New Holland Sales Stables
New Holland, PA

Monday, July 25, 1994

Report Supplied By Auction

261 HEAD. RIDING HORSES STRONGER; KILLERS STEADY.
LOAD OF DRIVING HORSES FROM OHIO 800.00-1700.00.
DRIVING HORSES 460.00-1150.00.
RIDING HORSES 485.00-975.00.
BETTER RIDING 1085.00-1525.00.
REGISTERED RIDING 710.00-1650.00.
KILLERS: FEW 840.00-875.00; LIGHTWEIGHTS 335.00-500.00.
HEAVY WEIGHTS 585.00-740.00.
PONIES: 100.00-325.00.
LARGE PONIES 390.00-450.00, FEW 510.00-585.00.
COLTS 145.00-315.00.

NOW OPEN

FOR OUR 54th SEASON

LAUREL FARMERS AUCTION MARKET

P.O. Box 633
Laurel, DE 19956



Marketing Fresh Produce Through Mid-September
Watermelons, Cantaloupes, Sugar Babies, Tomatoes and More

Opening July 12 9 AM

"No buyer too big or small- Pickup loads to tractor trailer loads sold- Buy your own - No fee for buying No broker needed"

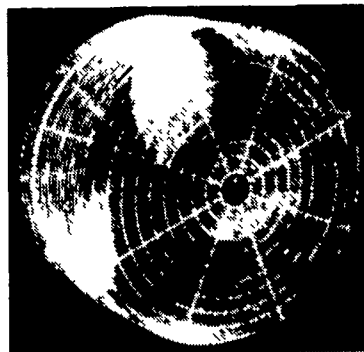
Please call for more information
302-875-3147 302-875-5136

TRUCKLOAD SALE



BARN COOLER FANS

20", 24", & 36" IN STOCK
COOL DOWN WITH A COOL PRICE



WILL SHIP ANYWHERE

Receive Year-Round Benefits For You And Your Livestock w/ a Schaefer Barn Cooler



Cedar Crest Equipment

Two Convenient Locations

608 Evergreen Rd.
Lebanon, PA 17042
(717)270-8600
1-800-646-8601

RD 2 Box 271
East Earl, Pa 17519
(717)354-0584

WE CUSTOM DESIGN SYSTEMS FOR YOU