

32 MISCELLANEOUS

WANTED: Original floor, grainery boards, 2" flooring, barn beams, tobacco sheds, siding. (717)229-2806. mobile 717/880-4549.

WANTED: Used tools and machinery. Buy, Sell, Trade, Consign or Finder. B.J. TOOL & SUPPLY, RT 422W, Myerstown, PA. 1-800-772-9845.

32a ANTIQUES

1965 Corvair convertible Monza 110, red w/black top, \$6500. 717-524-9633.

6hp Fairbanks Morris, good running condition. Galloway 1 1/2 hp, complete. United 1 1/2 hp complete. (2)Whit engines, 1 1/2 hp each, 1 good running, (1) 3/4 complete.

McCormick Derring 1 1/2 hp running. Economy 1 1/2 hp on wagon, running.

Ideal V model complete. Ideal R model running. Associate Hiredhand 1 1/2 hp engines, restored, on wagon.

Maytag twin restored and Maytag single restored. Upright Nova running. Several other small engines.

Stove pipe domestic restored on wagon in excellent condition. Will accept sealed bids.

2040 Potomac River Estates, Martinsburg, WV 25401 (304)274-9327.

33 RECREATIONAL VEHICLES

1973 Concord 28' motor home w/generator, air, new radials, new trans., 69,000 miles, \$4800 OBO. 717/529-2512.

1987 Ford E-350 customized van w/trailer hitch, fully loaded, 53,000 miles, \$10,250. 717-524-9633.

1989 Yamaha DT50, 50cc, 6 speed, liquid cooled, 3000 mi. \$650, offer. 717-852-7852.

For Sale: 19 ft. fiberglass 120hp inboard boat, \$3500, includes cover, ski's, jackets, trailer, tube. 717/725-2312 leave message.

34 AUTOS

1986 Ford Aerostar XLT in good condition. (717)249-0280.

1994 Chev. 9 passenger 4x4 Suburban, everything is power, leather seats, 3 heaters, deer guard, running boards, roof rack, 5000# hitch, phone, tinted glass, black and silver, fuel injected 350 eng. Cost \$32,101.05, asking \$27,000. Low miles. 717/588-6350.

'93 Mark VIII, white w/ beige interior, loaded, w/ sunroof, approx 30,000 miles, warranty, \$28,000. (610)754-6298.

'92 Ford Tempo Red, 4 Door, V6, Auto, Loaded, 11,000 Miles. \$7,900
'86 Buick Century Dark Blue, V6, Auto, A/C, 53,000 Miles, \$2,900
'93 Plymouth Sundance Black, 4 Door, Bucket Seats, 4 Cyl, Automatic, A/C, 25,000 Miles, \$7,400
Burkholders Auto Danville, PA (717) 437-3848

35 TRUCKS & TRAILERS

16x8' all steel Stake Body Dump Bed, 10-ton lift, hyd. incl., good condition, \$1200. 717/284-3797.

18' grain body w/hoist, removable 60" sides, very good condition, \$1500. 717/664-4577 after 6pm.

1954 Dodge dump truck, good condition, 14' box, 5x2, 21,000 GVW, 2000K on overhaul, need minor work, \$650 OBO. 717-529-2723.

1971 Mack R model tractor, tandem axle, 237 engine, 1st \$3500. 908-879-5851.

1975 Int. Paystar 5000, \$6000; 1974 Int. 4300 w/ Ravens 30' aluminum dump trailer, \$10,000. 814/443-4039.

1976 International flatbed truck, 23,000 GVW, Cat diesel engine, runs good, \$2250. Call 717/548-2435.

1977 Mercedes 18' stake body truck, 6 cyl. diesel, 5 speed trans., 25,000 GVW, 278K, \$1500. 215-679-6726.

1981 GMC 7000, 16'42" sides, dump grain box, 2-spd. rear, needs some body work, \$4500. 410/357-8111.

1982 GMC, 366 engine, 29,900 GVW, new inspection, 5&2, PTO included, low mileage, air brakes, \$5500. Lancaster Co. 717-786-4450

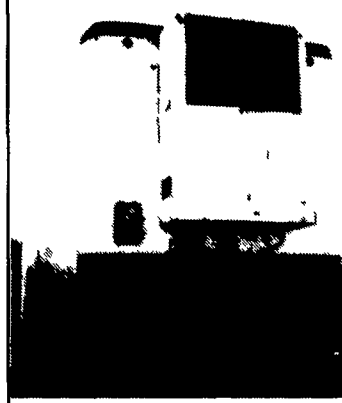
1982 Int. 9L diesel, 16' flat dump, 5+2, runs excellent, \$5,000. 1980 F700 Ford 14' grain dump, 320 engine, \$3,800. (914)564-1208.

1983 F-150, 4WD, w/Stahl utility body. 1985 F-250 w/ Reading utility body. (717)862-3723.

1986 Dodge 4x4, D250, 3/4 ton w/towing package, 360 auto, P/S, P/B, cap & bed liner, 79,000 miles, excellent work truck, \$5,900. 215/536-4190.

DON'T LOOK ANY FURTHER!
YOU'LL FIND IT IN LANCASTER FARMING'S CLASSIFIEDS

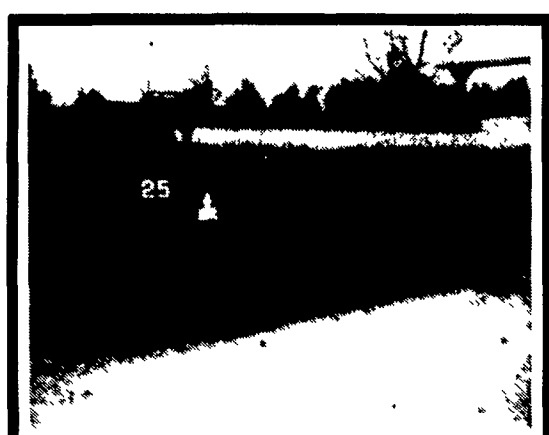
FOR SALE - 1978 FRUEHAUF ELECTRIC REEFER TRAILER



Refrigerated 42 Ft. With Overhead Doors. \$7,500

For More Information Please Call

1-800-327-4406 • 610-273-3776



1986 ALMAC 3200 Gallon Single Compartment Tank, Steel, Meter. \$1,500.00
CALL 1-800-345-2829
Curry Supply Co.

1986 Ford F350, 6.9 Liter diesel, 4 speed, recent inspection, new tires, w/or w/o 12' van body, \$4,995 OBO. (717)367-9044.

1986 GMC truck, dual wheeled, crew cab, 454 motor, standard shift, 80,149 miles, nice condition, \$7700; 1991 Eby 20' aluminum Wrangler gooseneck trailer, new condition, removeable deck, \$8900. Montour Co. 717-437-2290.

1986 Great Dane potato trailer, 45', spread on air, flat wood floor, new bushings, new air bags, new shocks, \$10,600 OBO. 717-582-8174.

1988 Ford Super Duty, 7.3 diesel, 5 speed trans., long wheel base, very good condition, \$8500; 1980 Ford L7000, new 3208 CAT engine, 12 months warranty, 5+2 speed, 220" wheel base; (3) Eby aluminum livestock bodies, 10', 12', 20' w/deck. 717-942-6108

1989 Chevy S10 Blazer Tahoe 4X4, 4.3 V6, Automatic Transmission, A/C, Cruise and Tilt, Stereo, Black w/Red, Inspected til 6/95, Excellent Condition. \$9900. (717)445-5480.

1989 Ford F350 truck, Eby cattle body, good condition. (610)286-0368.

22' flatbed dump, \$4300. 717/354-3105.

Chevy 1974 C30 w/12' aluminum box, new tires, inspected thru 12/94, \$1750. 717-838-4610 after 6PM.

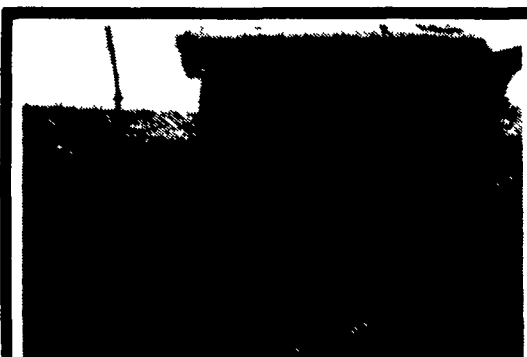
Diesel Engines: Detroit, 318, 16V71, 12V71, 671, V-653, 6V92, 8.2; Chev. diesel 6.2. Other engines and truck parts. Reasonable prices. Call after 6PM, (610)944-9871.

1990 Trans Equipment 42' walking floor trailer, roll tarp, sliding tandems, aluminum wheels, 11x24-5 tires. 717/871-9177 No Sunday Calls

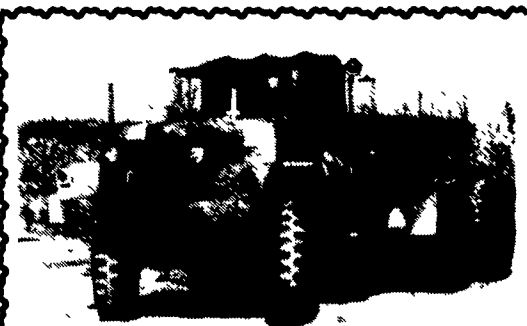
'86 Dodge 150 Royal, 8 passenger, short whl. base, 318 auto, PB, PS, air, AM-FM cassette, privacy glass, 53,000 local 1 owner miles, two tone brown, excellent condition, \$7,900. 717-733-2873

'84 Iveco 11,600 GVW flatbed, needs minor work. base, 318 auto, PB, PS, No Sunday calls. (717)672-9890.

'87 Chev, 30CD chassis, dual wheels, excellent condition, good rubber. 610/287-8349.



11' Steel Dump Bed, 24" Sides. \$750.00
Also 16' Galion Steel Bed 42" Sides \$1,750.00
CALL 1-800-345-2829
Curry Supply Co. Curryville, PA.



MACK 6x6 TRUCKS
Cummins V8 Diesel Jake and full Air Brakes P.S. 1400/24 Tires Double Frame Rear Drag Winch (50,000 lbs.). Differential Locks. (60 Tons) Hauling Capacity. Like New Only 800-17,000 Miles. A must for every Farmer. \$12,500
(814) 834-1018 St. Marys, PA

R & R CAR AND TRUCK CENTER
1657 Rohrerstown Road, Lancaster, PA

1984 FORD 700 22' Cab & Chassis, Cat 3208, 5 & 2, Hyd. Brakes, PS, 29,000 GVW
Call For More Details

1986 IVECO Z110 6 Cyl, Diesel, 5 Spd., PS, Hyd. Brakes, 11,600 GVW, 14' Cab & Chas. \$4,500

1986 & 1988 IHC S1954, DT466, 5&2, P/S, A/B, 32,000 GVW Good Miles Also 1979 IHC w/Same Specs, But Hydraulic. Call for Details



Also Vans, Flats & Reefer Body For Sale, Many Sizes
Call Ray Leed 717-560-4901



1983 GMC Automatic 8.2 Detroit Diesel 16,864 Original Miles, 24,500 GVW No CDL Trailer Hook-up. Delaware County. Call After 3:30. 485-5174 \$10,500.00



1976 D.M. Mack manure spreader, 237 motor, 6 speed, 18F, 44R good 11R20 rubber, hydra. drive spreader, good condition. \$19,900 (717) 733-8528



1993 Timpete Walking Floor, Keith 7/32 Floor, Roll Tarp, 42' 10'8" High S/S Front & Back, White with Brown Tarp. \$40,000 Negotiable
(717) 738-1312 Days 738-2072 Evenings



INTERNATIONAL 6x6 BRIDGE TRANSPORTING STAKE BODY TRUCKS
Front Winch, PS, Air Brake, 1400/20 Tires, 21 ft Bed with removeable steel racks. Continental 6 cyl engine. LIKE NEW 600-2,500 Miles. Excellent for off road heavy duty cargo transporting with their all wheel drive and ability to climb a maximum grade of 70 degrees. Double Frame. A must for every farmer \$9,950
(814) 834-1018 St. Marys, Pa.

LOUVERED TAILGATE



- Fast-Easy Installation
- Improves Vision
- Rugged Construction
- Increases Mileage
- Enhances Appearance

GAS MILEAGE INCREASED 15%
Not All Sizes In Stock - Call Ahead For Details

QUALITY AUTO PARTS **Ruhl's** MACHINE SHOP SERVICE
Automotive
83 East Main St., Mt. Joy, PA 717-653-8057
Hours: Monday-Friday 9 AM to 6 PM; Sat. 9 AM - 3 PM

EQUIPMENT FOR SALE

- Used Western 7 1/2' Plow.....\$1,050
- Used 20' 6" Platform with Winch.....\$850
- Used Turner QAHP Lift Axles with Controls.....\$1,250
- Used 9' Dump Body, As Is.....\$200
- Used 9'x88" Platform Body.....\$200
- Used 9'2" Box "V" Plow, Fits Ford.....\$2,250
- Used 84 Ford Thunderbird, As Is.....\$2,000
- Used Aluminum 14' Dump Body, As Is...\$500
- Used 1980 Ford C900 with Diesel & Automatic with New Omaha Grain Body & Hoist, As Is.....\$9,950
- Used 65 Ford F750 with 1985 14' Platform Dump & Hoist, As Is.....\$2,450
- New Ford Dual Wheel Pickup Bed, Red.....\$775
- New Valley E-Z Dumpers, Unmounted.....\$1,775
- New Pickup Truck Tailgate Mini-Spreaders, Unmounted.....\$995
- Large Selection of Take-Off Truck Bumpers & Seats
- Large Selection of Bodies In Stock - Dumps, Stake, Grain, Holsts, Snow Plows, Tool Boxes & Service Bodies
- E. M. KUTZ, INC:
READING, PA 19607 610-775-3528