

Records Set At National Corriedale Sale

WOOSTER, Ohio — Corriedale breeders from 20 states assembled at the Wayne County Fairgrounds in Wooster, Ohio for the annual meeting of the American Corriedale Association, Inc. and the National Sale.

A record average price of \$416.73 was achieved on the 136 head sold, and grossed \$56,675. This average was up approximately \$10 per head over the previous record-setting sale held at the Midwest Stud Ram Sale in Sedalia, Mo. last year.

Corriedale breeders from coast to coast consigned their best, and it was evident that a good sale was in the making. Record attendance at the annual meeting held the previous evening, Corriedale enthusiasm and new interest running at a high level proved to be a good combination for a record sale.

The sale started on a hot pace as the grand champion ram from

Phillippi Corriedales of Hammond, Mont. quickly sold to Dayle and Donna Waddington of Ukiah, Calif. for \$5,000. This was the second all-time record price for a Corriedale ever sold at auction in the United States and was only exceeded in price a number of years ago as a Harley Martin ram from Wyoming sold in the Midwest Stud Ram Sale for \$6,500.

The reserve champion ram was a Bruce Hoffman ram from South Dakota and sold to Carolyn Tolman of Massachusetts for \$1,100. This price was outdone, however, by the fourth place yearling from Dayle and Donna Waddington and sold jointly for \$1,400 to Dan and Dave Hampton and Louis Zimmer of Indiana. Five yearling rams brought over \$1,000 each as the 22 yearlings averaged \$672.73.

Bruce Hoffman had the first senior ram lamb. He topped the

class at \$500, selling to Vesper Valley Farm, Billie Andrews, of Pennsylvania, as 12 senior lambs averaged \$285.42.

The first place intermediate ram lamb consigned by Ed Craig of Illinois topped the class at \$700 and sold to Fred Palmer of Indiana. This class averaged \$359.09.

Phillippi Corriedales were class winners once again in the junior ram lamb class, winning both first and second. Both lambs brought \$400 each going to Wayne Kemler of Ohio and Laura Martin of Pennsylvania.

The yearling ewes once again proved to be a very interesting and record-setting class. The grand champion ewe consigned by Dayle and Donna Waddington sold to Valley Lamb and Wool Company of Maryland for \$1,100. The second place yearling consigned by Merlau Farms of Indiana quickly sold to Bill Lowry of Indiana for

\$1,750. However, after several ewes brought in the \$400 to \$600 range, bidding got quite intense on a My-Bar Farms entry from Illinois. When the bidding was over, an all-time record selling Corriedale ewe at auction was attained. This ewe brought \$3,100 from Ben and Mary Bow of Pennsylvania. This exceeded the previous record of \$2,700 set at the East Central Sale a number of years ago. The 21 regular yearling ewes set a record average of \$642.86.

A new class called "Natural Yearling Ewes" was initiated this year. This consists of yearling ewes sheared at the show, the ewes were then judged by the show judge, Tom Crane, and were allowed up to 65 points according to the new scorecard. The fleeces were then judged by Keenan Mitchell and allowed up to 35 points according to the scorecard. The combined scores were tabulated and placed accordingly. Phillippi Corriedales were the winners of this class and sold to Tom Crane of California for \$800. These 10

natural yearling ewes averaged \$372.50.

The reserve grand champion ewe was a Kin Brothers senior lamb from Ohio and sold to Susan and David Cummings of New York for \$1,000. Dayle and Donna Waddington had a good lamb bring \$600 to Wolf Brothers of Ohio as the 16 fall ewe lambs averaged \$385.94.

The intermediate ewe lamb class was won by Ed Craig of Illinois and sold to Merlau Farm of Indiana for \$275. The top selling ewe in this class, however, was another My-Bar entry and sold to Laura Martin of Pennsylvania for \$650. This group of ewe lambs averaged \$315.48.

The junior ewe lamb class was won by Henry Shultz and Family of Missouri and sold to Bill Allen of Ohio for \$300. The top-selling lamb in this class was a Suzanne VanNatter entry from Michigan and sold to Pikes Peak Woolies/Herbold of Colorado for \$350. The 13 junior ewe lambs averaged \$192.31.



HEAVY DUTY ROUND BALE MOVERS

FEATURING: Kverneland forged steel spear electrically heat treated

3 POINT HITCH BALE MOVERS

3 PT 2502 DOUBLE SPEAR

• Small diameter spear for easy penetration

• 1500 lb. capacity



The Same Unit Can Be Used With One Spear For Center Of Bale Or Two Spears For Under Bale.

COMBINATION BALE MOVER

• Heavy duty structure designed to fit any 3 pt hitch or loader boom with one or two cylinders

• Small diameter spear for easy penetration

• 2500 lb capacity

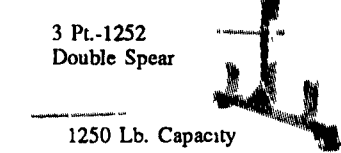
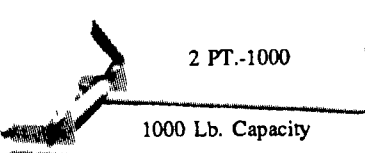


The Same Unit Can Be Used With One Spear For Center Of Bale Or Two Spears For Under Bale.

COM 2502

STANDARD DUTY BALE MOVERS

3 POINT HITCH BALE MOVERS



The Same Unit Can Be Used With One Spear For Center Of Bale Or Two Spears For Under Bale.

LOADER BUCKET MOUNTED BALE MOVERS

PLF-4000 FRONT END LOADER FORKS

• Mounts to loader bucket in minutes

• 1500 lb capacity

• 24" high load guard

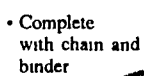


SSL-2500 SINGLE SPEAR BALE MOVER

• Mounts to loader bucket in minutes

• Complete with chain and binder

• 1500 lb capacity

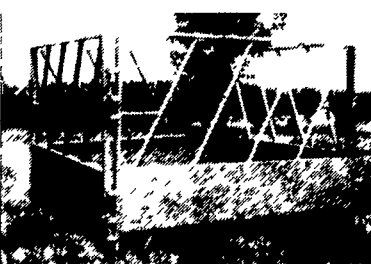


HAY BALE FEEDERS

• Feed big round & red. bales or stacks

• 1/2" formed steel channel and 1" sch. 40 pipe, all welded construction

• 14 ga. sheet metal around bottom helps reduce hay loss



PAUL B. ZIMMERMAN, INC.

Call or Write For Additional Information And Your Nearest Dealer

Hours Mon. Thru Fri. 7 to 5 Sat. 7 to 11

295 Woodcorner Rd. Lititz, PA 17543 1 Mile West of Ephrata 717-738-7365



KEN CLUGSTON (717) 665-6775

CRAFT-BILT CONSTRUCTION INC.

FARM-HOME BUILDING
1242 Breneman Road
MANHEIM, PA 17545
PH: (717) 665-4372

BUILDING & REMODELING FOR—
DAIRY SWINE BEEF RESIDENTIAL POLE BUILDINGS STORAGE

NEED YOUR FARM BUILDINGS PAINTED?

Let us give you a price!

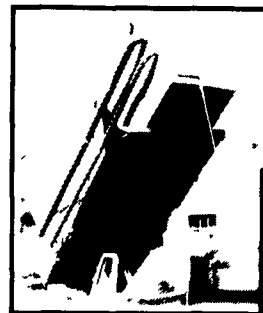
Write:

Daniel's Painting
637-A Georgetown Rd.
Ronks, PA 17572
(or leave message)

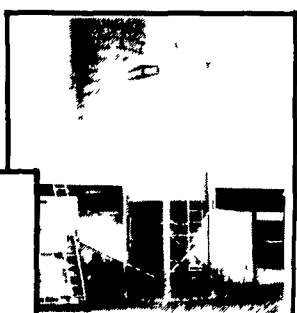
— (717) 687-8262 —

Spray on and Brush in Painting

CHORE-TIME BINS AND AUGERS



We Stock Truckloads Of Chore-Time Bins & Miles Of Chore-Time FLEX-AUGER



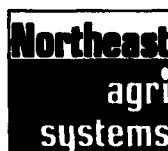
We Will Assemble & Deliver Bins To Your Farm

Bins... Large Or Small



Custom Applications

Authorized master distributor since 1982



Northeast Agri Systems, Inc.

Flyway Business Park
139A West Airport Road
Lititz, PA 17543
Ph (717) 569-2702

Store hours Mon-Fri 7:30 to 4:30 Sat 8:00 to Noon 24 Hr 7 Day Repair Service

1-800-673-2580



NOW OPEN IN FEDERALSBURG, MD. 305 UNIVERSITY AVE. (Formerly Long Lumber) 410-754-9434 STORE HOURS: 7:30 A.M. - 4 P.M. Monday - Friday