

Public Auction Register

Closing Date Monday 5:00 P.M.
of each week's publication

SAT. AUG. 20 - 9AM Antiques, household goods, antiques, coins, tools & riding mower, coins. Between Kinzer & Paradise turn N. at Vintage Sales Stables on Vintage Rd. at bottom of hill turn left on Haristown Rd. first Rd. on right on Osceola Rd. first st. left to 8 Acola Dr. By Alice E. Crouse. Robert E. & Jeffrey R. Martin, auct.

SAT. AUG. 20 - 9AM, Farm Real Estate, Farm Equip., HH Goods, Car. Located From E-Town Square Take E. High St., Continue Approx. 3.5 Miles On Elizabethtown Rd. To Herford Rd., Turn Right And Continue To Third Farm. Selling For, Estate Of Allen E Gantz. Long & Long, Aucts.

SAT. AUG. 20 - 9AM, Estate Auction Of Antiques, Collectibles & Household. Located Oak Grove Rd., Pine Grove, Pa Estate Of Theo Strausser. Auct. Dwight D. Miller.

SAT AUG 20 - 9AM, Semi-Detached Dwelling - Real Estate, Antiques & Household Goods. Located At 271 Church Ave., Ephrata, Lancaster Co., Pa. Terms By, Kathryn W Styer Horst Aucts

SAT AUG 20 - 9:30AM Real estate, antiques, household goods, 502 S Walnut St., Lititz, Pa For Mr & Mrs J Warren Snavelly E M Murry Assoc, aucts.

SAT., AUG 20 -9:30AM Estate auction, period Queen Anne armchair, Chippendale Wingback chairs, Sheraton wall mirror, Grier-Mt. Jordan blue dec. stoneware, antiques, furniture, collectibles, etc. 6100 Bait. Pike, Oxford, Pa. Estate of Ralph J. Grier, II. Jeffrey E. White-side, auct.

SAT., AUG. 20 - 10AM, Mel's Stable Selected Con-

signment Horse Sale. Located At 834 Wallace Rd., New Holland, Pa. From Rt. 23 in New Holland, Go South On Brimmer Ave. Go 2 Miles South On New Holland Road To Hill Rd. Turn Left On Hill Rd. Proceed 1.2 Miles To Sale On The Left. From Rt. 340 East Of Intercourse Take New Holland Rt. 2.5 Miles to Hill Rd., Right On Hill Rd. to Sale On Left. Mel Hoover, Auctioneer.

MON. AUG. 22 - 12 Noon Bob's Big Boy Restaurant, Memory Lane, York, Pa. Complete Liquidation of all equip. and furniture. Mark Baranowski, auct.

TUES., AUG. 23 - 4 PM Furniture, antiques, collectibles, Dudley Pocket-watch, etc. At Commonwealth Fire Co. Social Hall, 2045 N. Sherman St., York, pa. Sold for Grace A. Myers & Others. Brian L. Gilbert, Jacob A. Gilbert, aucts.

TUES. AUG. 23 - 5PM, Brick & Aluminum Sided Rancher, Real Estate, Fine Household Goods & Appliances Located At 502 N Elm St (Corner Of N. Elm & Humming Bird), Lititz, Lancaster Co., Pa Terms By, Sharon M Dawbar Horst Aucts

WED AUG 24 - 6PM Real estate near Hancock, Md. Sell for Mel and Carrie Mills located at 14415 Heavenly Acres Ridge J G Cochran, aucts.

THURS. AUG 25 - 5:30PM, Ben Streaker, Jr. Night Auction Selling Farm Machinery Located Addison (Steuben Co.) New York. Pirrung Aucts. Inc. 716-728-2520.

FRI. AUG. 26 - 1:30PM, State Graded Feeder Pig Sale. Located At Carlisle Livestock Market, Inc. Exit 12 South Off I-81. Left Onto Alexander Spring Road. (717) 249-4511.

FRI. AUG. 26 - 6PM, Real Estate, 1 Story House On Lg. Lot, Located Exit #8 Of 2-78 Old 22. Dwight D. Miller, Auct.

FRI., AUG. 26 - 7PM Lebanon County Holstein Club sale, Lebanon Area Fairgrounds, Lebanon, Pa. Harry H. Bachman, auct.

SAT. AUG. 27 - 46 Acre Farm, Personal Prop, Antiques, Farm Machinery. Ray S. Lorah, 700 Lauchtown Rd., Denver, Brecknock Twp, Kline, Kreider & Good Aucts.

SAT. AUG. 27 - 8:30AM Groceries, glassware, furniture, quilts by the Bareville Fire Co. 211 E. Main St., Leola, Pa. Local Aucts.

SAT. AUG. 27 - 9AM Real estate, antiques & household items. Located at 17 N. Third St., Millfintown. Offered for sale at Juniata Markets, Jct. of Rts. 75 & old 22, at the blinking lights, 1 mi N of Port Royal. Audrey G and Clair "Ted" Watts, owner. Long's Auction Service.

SAT. AUG. 27 - 9AM, Valuable Real Estate, Antiques & Personal Property. Located At 1108 North George St., York, Pa. Executrix, Phyllis D. Brenne-man. Jacob A. Gilbert & Brian L. Gilbert, Aucts.

SAT. AUG. 27 - 10AM, Public Consignment Sale. Consignments Wanted. Call Us Early To Receive On Items And Prime Sale Time Advertising. To Consign Call 717-275-2880, Ask For Mel, Todd Or Kirk Located Danville Auction, Danville, Pa. Old 11 Between Bloomsburg & Danville, Next To SPCA Alan Diefenbach, Auct

SAT AUG 27 - 1PM From Akron take 272 N turn left on Locust Bend St. to left on Colonial St. to left on Manor Ridge Dr. to property on left. Akron Boro, Lanc. Co By Eugene G & Goldie Stauffer. Aaron E Martin aucts.

TUES. AUG. 30 - 7PM, 2 Story Dwelling Located At 217 Lancaster Ave., Terre Hill. Open House Sat., Aug. 6th From 1-3 P.M. Terms By, Blue Ball National Bank. Horning Aucts.

PUBLIC AUCTION

REAL ESTATE - PERSONAL PROPERTY
WOOD WORKING - INDUSTRIAL
POWER TOOLS & EQ.

FRI. AUG. 12 & SAT. AUG 13
9 am.

Loc: 142 Main St. New Providence, Pa. Take Rt. 222 So. of Lancaster 11 miles. West onto Main St.

RE & Personal Property on Fri. Tools on Sat. Catalogs available at Open House July 23 and Aug. 6 from 1 to 3, or call Aucts. 717-786-3394.

Complete full line of Ind. Power tools on all Brand Names. 5 hp. Air Compressor; Air Hammer; Biscuit cutter; Boring Machine; 1 T Chain Hoist; Cutters; Dovetail Jig; 5 hp Drill Bit Sharpener; Hand Drills; Drill Presses; Duplicator; Dust Collectors; Wet Tool Grinder; Heat Gun; Horizontal Boring Machine; Impact; Indexing Table; Jointers; Variable Speed Wood Lathe; Mold Matcher; Chain & Chisel Mortiser; Air Nailers & Staplers; Pallet Jack; Hand Planers; Routers; Router Tables & Planer; Hand & Table sanders; Tables Saws; Band Saws; Miter Saws; Radial Saws; Sharps; stapler; Super pillow Block; Single End Tenoners; Hand hyd Rol Lift. App. 300 Lots. No Out Of State Checks.

Terms By Christian H. Haverstick, Estate
Frank R Rohrer, Executor
717-786-2206
Kreider, Kline & Good Auctioneers: Lic. #513L



PUBLIC AUCTION 2 BIG SESSIONS

* Vehicles * Coins * Toys *
Equipment * Tools * Antiques *
Baseball Cards * Collectibles *
Firearms
JULY 29 9:30 A.M.
JULY 29 6:00 P.M.

TWO AUCTIONEERS ALL DAY LONG

Join the Buying and Selling Auction at Lebanon County's largest auction facility! This is the fastest growing auction in a 3-county area! 10% Commission - Same Day Cash Payment Location: 2 Miles North of Lebanon via Rt. #72. Just Minutes from Routes #81, 78 and 22. Auction Begins with Box Lots and Furniture, Progressing to the tables of Glassware & Collectibles Inside!

BRING YOUR GOODS TO SELL FOR SAME DAY CASH ONLY 10% COMMISSION
1983 Iveco Cube Van 1985 F150 Ford Pickup Included in Session I At Approx. 12 Noon.
SESSION #1: 9:30 A.M. Oak Extension Table, Fancy Heavy Oak Morris Chair, Bedroom and Dining Room Suites, China, Glassware, 200-300 Box Lots, Sander, Lathe, Craftsman Tools, Bench Grinder, Roper 1991 Refrigerator, Crocks, Table Saw-Joiner, 1 1/2 Ton Jack, Metal Toys, Cherry Dresser, Skil Saw, Chain Saw, Loads & Loads of Unlisted Merchandise & Collectibles. Lone Ranger and Other Lunch Boxes, Fabrics, 2 Very Nice Princess Dressers, Country Cupboards, Jelly Cupboard, Flat and Dome Top Trunks, Hanging Cupboard...AND MORE!
SESSION #2: 6:00 P.M. Coins, Baseball Cards, Toys, Hess, Ertl and other Gas Station Toys.
FIREARMS: Winchester Mod. 67-22 Short Long. Ithaca Mod. 37-12 Gauge Pump, Stevens Mod. 77F-410 Pump. Two H&R 12 Gauge Single Shot. Daisy BB Gun. H&R 22 Hand Gun (as per Fed Regs). Marlin Mod 80-22 Short Long. Marlin Mod 336-R3-35 Caliber Rifle.

CONSIGNMENT HOURS
July 25-27 11:00 A.M.-5:30 P.M.;
July 28 7:30 A.M.-9:00 P.M.;
July 29 7:30 A.M.-8:45 A.M.
TABLE PROVIDED
YOU SET UP YOUR OWN GOODS.
AUCTION LAST FRIDAY EVERY MONTH.
NOTE! THIS SHOULD BE OUR LARGEST AUCTION EVER!!

E.M. Murry Associates

Professional Auctioneers,
Appraisers and Advisors
Since 1953
10 S. Broad St.
Lititz, PA 17543
E.M. Murry 626-2636
Richard Murry 626-8175
Ken Miller
AU-00648-L

PUBLIC SALE

New & Used Inventory

Saturday, August 13, 1994

9:00 AM

Located in Lancaster County, PA, 2 miles west of Rockvale Square at 2110 Rockvale Road.

Used Inventory

Buffalo half iron worker with notcher - copper - punch - angle - flat; bar shear; Monarch lathe 24" swing x 78" bed with chucks - collets - face plate, real nice; Kerry tool room lathe 11" swing x 24" bed, hyd. or electric, lots of tooling, real nice; Rototec spray weld system; 40 ton punch press; Wisc. and Allis Chalmers engine parts; 200 HP VM diesel; HI pressure washer pump; chain saw sharpener; bonoh vises; lots of drill bits; chucks, reamers; collete; lathe tooling; work tables; grinders; drills; portable air compressor; belts, pulleys; hyd. hose; valves; fittings; 1 3/8 cold roll bar stock; crimper jacks; lots of NH mower knives; welding helmets; Miller welder with engine; lots of steel plates & bar stock; many other items; we don't know what we might all find.

New Inventory

Most Items Top quality Merchandise

Victor torch sets; Speedway express wagons; engine driven water pump; 1/2" B&D electric drills; air tools; air motors; complete inventory of Stanley hinges and hardware; complete inventory of all kinds of USA made hand tools; horse drawn mower parts; electric fencers; chain hoists; trolleys; jacks; barn tools; casters; wheels; fans; hand trucks; wheel barrows; buggy jacks; stove pipe inventory fence reels; air hose, many more items for farmers, contractors, woodworkers, etc. We are completely selling some sections of our store.

Note: Come early and enjoy the day with us. You name it, we might be selling it.

Terms: Cash or good check day of sale. All items sold as is - where is. Not responsible for accidents.

Sale By: Smucker Welding Shop

Auctioneer

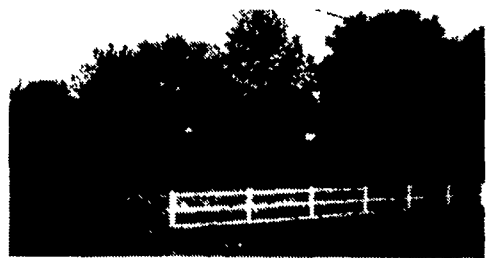
Steve Jr. Petersheim

610-593-AUCT
AU 001349L



Plenty of homemade food proceeds benefit needy families.

TWO DAY
PUBLIC AUCTION
REAL ESTATE - COMMERCIAL.
LOT - ANTIQUES - GLASSWARE
- TOOLS - FURNITURE
FRI., AUG. 5, 1994
SAT., AUG. 6, 1994
Auction Time 9:00 A.M. Each Day
Real Estate: Sat., 12:00 Noon
LOCATION: From Ephrata take Rt. 322 West, turn right on Weidmansville Road at Ephrata Auto Parts, Clay Twp.



105 Weldmansville Road LARGE BRICK RANCHER

With 3 large bedrooms (1 - 25'x35' with outside entrance), living room, large kitchen with modern wooden cabinets and G.E. side-by-side refrigerator and range, formal dining room, full bathroom. Basement has very large family room with built-in cabinets, woodstove, glass sliding doors, laundry, full bathroom, cold cellar.

- 2-car garage
- Oil H.A. heat
- Plaster walls
- 200 amp service
- Well water
- Water softener
- Central air conditioning
- Full attic storage
- Mature shade
- Pella tilt-in windows

NOTE: An exceptionally well-built home with many extras such as ceiling fans, gold plated hardware, electronic air cleaner, new attic fans, Seentrol system, many closets and built-in cabinets. Don't miss this beauty.

LARGE COMMERCIAL LOT

Adjoins the above selling property. This lot will be sold separately immediately after house is sold. Many possibilities for this lot near Ephrata and Rt. 322. Contact Clay Township with any zoning questions at (717) 733-9675

TERMS: 10% down day of auction, balance at final settlement on or before Sept 15, 1994. In need of assistance to obtain financing, or appointment for private showing contact Aaron E. Martin Auct. at (717) 733-3511

FRIDAY, AUG. 5 AT 9:00 A.M.

TOOLS & EQUIPMENT: Winco 10 HP 5000 Watt Gas Generator, Sears 1750 Watt Gas Generator, 2-4-6 ft Levels, Bolt Cutters, Crow Bars, Log Chain, Quilts, Bow Saw, Shovels, Metal Shelving, Hand Saws, Pipe Wrenches, Workbenches, Electrical Tools, Aluminum Step & Extension Ladders, Electric Bug Killer, Lots of Woodworking Tools, Lath Tools, Hammers, Drawknives, Vise Grips, Drill Bit Sets, Electric Drills, Socket Sets, Wrenches, Oil Pump, Gas Cans, Craftsman 5-Drawer Base Tool Cabinet, 4-Drawer Tool Cabinet, Battery Charger, Floor Jack, Craftsman Electric Grinder, Lathe, Drill Press, Band Saw, Radial Arm Saw, 3 HP Posthole Digger, Homelite & Stihl Gas Weed Eaters, Shopmaster Scroll Saw, Craftsman Locking Tool Chest and many, many more items.

LAWN & GARDEN EQUIPMENT: Hedge Trimmer, Fertilizer Spreader, Craftsman Snowblower, Gravely Push Mower, Lawn-Boy Edger, 36" Lawn Roller, Bolens Tiller, Echo Blower, Honda 3011 Rider Mower w/Catcher & 30" Deck, Gas Grill.

Note: Exceptionally large amount of quality tools, and misc. items. Many quality items not mentioned, come see what we have!

SATURDAY, AUG. 6 At 9:00 A.M.

Real Estate 12:00 Noon

FURNITURE: Birds-eye Maple 8 pc. Bedroom Suite, 5 pc. Single Bedroom Suite, Round Wooden Table w/Inlaid Leather Top, Several TVs, Small Marble Top Table, Enclosed Glass Front Bookcases, Duncan Phyfe 8 pc. Dining Room Set - includes Buffet & Hutch, Small Hutch, Chest of Drawers, Box Spring & Mattress, Corner Desk, Electric Typewriters, 2-Drawer Filing Cabinet, Rock Maple Windsor Style Chairs, Floor Lamps, Living Room Suite, Estey Electric Organ, Gutbransen Console Piano, Orgasonic Organ, Rocking Chairs, 3 pc. Section Bookcase, Brass Fireplace Hardware, Maple End Tables, Wood Box, Maytag Wringer Washer (like new), Whirlpool Washer & Dryer, Apt. Size Washer & Dryer, 15 Cu. Ft. Upright Freezer.

ANTIQUES: Picture by Geo. Wohling, Numerous Other Pictures, Beam Bottles, 2 Seth Thomas Mantel Clocks, Ingraham Mantel Clock, 1 Seth Thomas Wall Clock, 2 Cuckoo Clocks, Musical Wine Bottles, Old Violin w/Wood Case (needs restored), Cast-iron Toys & Figurines, 70% Silver School Bell, Concrete Statues of Dog, Boy, Horse, Turkey, Lions, Deer, His & Her's Soda Pop Dolls, Iron Wagon Wheels, Sun Dial, Terra Matic Wagon, Kerosene Lamps, Crocks, Glass 5 Gal. Water Bottles: Cloister, Rockwood and Glen Summit, Cast-iron Nut Crackers, Cast-iron Eight-Hitch Horse Team, Chase Horse Blanket.

GLASSWARE - 1:00 P.M.

Blue Sponge Pitcher, R.S. Prussia Pitcher & Wash Bowl, Johnson Bros. Ironstone, Shakespeare Ironstone, Shafords Ironstone, Bone China Figurines & Animals, Occupied Japan Figurines, Ruby Glass, Amethyst, Cobalt Blue, Planters Peanut S&P, Cobalt Glass Sleepers, Hen on a Nest, Glass Baskets, Czechoslovakia Glass, Glass Fish & Bird Figurines, Hobnail Glass, lead Crystal Vases, Rickes Chalet Glass, West Morland Candles, Salts.

MISC. & HOUSEHOLD: Microwave, Electric Oven, Kitchenware, Corning Ware, Hoover Floor Vac Power Driven, Milk Can, Lighted Magnifying Glass, Double Galvanized Tubs, G.E. & Oasis Dehumidifiers, Day Bed, New Hammock, Metal Cabinet, Bedding & Linens, Huffey Exercise Bike, New Beetle Traps, Lots of Other Supplies, 3 Patio Umbrellas, Picnic Table, Lots of Games, Amish Dolls, Miniature Windmill.

NOTE: Don't miss this nice country property or the quality small items to be offered at this auction. In case of bad weather auction will be held in a tent.

Attorney: Michael P. Kane

Auction By

Kathryn M. Wingenroth

(Mrs. Richard Wingenroth)



Aaron E. Martin Richard L. Stauffer
(717) 738-4168 (717) 738-0296

Food At Auction