

Phila. Fruit Market
PHILADELPHIA Terminal
 Prices as of 20-JUL-94
 CLOUDY 78-93

CITRUS FRUITS --GRAPEFRUIT:
 OFFERINGS LIGHT ctns AZ Red 27s 13.00 fair qual 11.00 32s 13.00 fair qual 11.00 36s 13.00 fair qual 11.00 40s 13.00 fair qual 11.00 48s 13.00 fair qual 11.50 CA Red 32s 12.00 36s fair qual 10.50 40s fair qual 10.50 ---LEMONS: MARKET STEADY ctns CA .00 165s 30.00 fair qual 25.00-26.00 ord qual 18.00 few 19.00-20.00 200s 30.00 fair qual & ord cond 6.00-8.00 ---LIMES: MARKET ABOUT STEADY 10 lb ctns FL Seedless Type 48s few 3.00-5.00 54s few 3.00-4.50 MX Seedless Type 48s 3.50 54s 3.50 63s 3.50 ---MISC CITRUS: OFFERINGS INSUFFICIENT TO QUOTE ---ORANGES: MARKET CA STEADY, FL OFFERINGS LIGHT ctns CA Valencia 56s 18.00 fair qual 11.00-11.50 few 12.00 72s 14.50-16.00 fair qual 11.00-11.50 few 12.00 88s 13.00-15.00 mostly 13.00-13.50 fair qual 11.00-11.50 few 12.00 113s 11.00-14.00 fair qual 11.50 138s 11.00-12.00 4/5 buctns FL Valencia 80s 13.00 100s 13.00 Pope Summer 125s 13.00 ---TANGELINES: OFFERINGS NONE ---TANGERINES: OFFERINGS NONE ---TEMPLES: OFFERINGS NONE

BERRIES --BLUEBERRIES: MARK-
 ET ABOUT STEADY fits 12 1-pt flmwrpd bkts NJ med 6.00-7.00 few 5.50 med-lge 8.00-9.00 mostly 8.00 fits 12 1-pt cups with lids NJ med-lge 8.00 ---

CRANBERRIES: OFFERINGS NONE ---
MISC BERRIES: fits 12 1/2-pt bkts with
 lids OR AIR Blackberries 18.00 ---
RASPBERRIES: MARKET LOWER fits
 12 6-oz cups with lids CA Red 10.00-15.00
 mostly 10.00-12.00 ---**STRAWBERRIES:**
 MARKET ABOUT STEADY fits 12 1-pt
 bkts CA lge preferred labels 11.00-12.00
 mostly 11.00 med-lge 7.00-8.00 few 6.00
 one label high as 9.00 fair cond low as 5.00
MELONS ---CANTALOUPS: MARKET
 LOWER 1/2 ctns/crts CA 12s few 13.00
 15s 10.00-12.00 mostly 11.00-12.00 few
 13.00 18s 10.00-12.00 23s 10.00-11.00
 bins MD 110-130 count 125.00 ---
HONEYDEWS: MARKET ABOUT
 STEADY 2/3 ctns CA 4s 6.00 few higher
 5s 6.00 few higher 6s 6.00 few higher MX
 5s 6.00 6s 6.00 8s 6.00 TX 5s 6.00 6s 6.00
 ---**MISC MELONS: MARKET ABOUT**
 STEADY 2/3 ctns CA Casaba 6s
 10.00-11.00 Juan Canary 6s 10.00-11.00
 Santa Claus 6s 10.00-11.00 ---
WATERMELONS: MARKET ABOUT
 STEADY ctns per ctn TX Red Seedless 4s
 19.00 bulk per melon MD Crimson Sweet
 14-16 lb avg 1.75 Jubilee 33 lb lgr 4.50
NON-CITRUS FRUITS ---APPLES:
 MARKET STEADY ctns trypk SF Granny
 Smith 100s 22.00 CONTROLLED
 ATMOSPHERE STORAGE ctns trypk
 WA WAExFcy Red Delicious 88s
 15.00-16.50 100s 15.00-15.50 113s
 14.50-15.00 125s 12.50-15.00 Granny
 Smith 100s 15.00-18.00 113s 15.00 U.S.
 ExFcy Red Delicious 100s 13.00 125s
 13.00 Golden Delicious 100s 22.00 Gran-
 ny Smith 88s fair cond 12.00-14.00 100s
 fair cond 10.00-12.00 113s fair cond

10.00-12.00 WAFcy Red Delicious 100s
 12.50 113s 12.50 138s 12.50 ---
APRICOTS: MARKET SLIGHTLY
 LOWER 24 lb ctns CA Patterson #10 fair
 cond 10.00 poor cond .50 #12 fair cond
 8.00-9.00 Tilton 6 1/2 row sz 15.00-16.00
 7 row sz 12.00-14.50 7 1/2 row sz
 10.00-12.50 ---**AVOCADOS: MARKET**
 ABOUT STEADY ctns 2 lyr CA Hass 48s
 45.00 ---**BANANAS: 40 lb ctns IMPORT**
 12.50-13.00 fair qual 11.50 40 lb ctns
 bagged IMPORT 12.50 ctns institutional
 pk IMPORT petite' 12.50 ---**CHERRIES:**
 MARKET LOWER 20 lb ctns/lugs OR
 U.S. One Bing 12 row sz & lgr 25.00-26.00
 Lambert 12 row sz & lgr 25.00-26.00 WA
 WAOne Bing 12 row sz & lgr 23.00-25.00
 ---**FRUITS OTHER: ctns 1 lyr CA Apple**
 Pears Ichiban 18s 8.00 ctns 12 1/2-pt bkts
 AZ AIR Figs Black Mission 24.00 ---
GRAPES: MARKET ABOUT STEADY
 23 lb ctns/lugs CA Perlette 17.50-19.00
 mostly 18.00-19.00 some low as 16.00
 preferred labels 21.00-22.00 mostly 21.00
 medium 14.00-15.00 ord cond 6.00-8.00
 Thompson Seedless 21.00 Flame Seedless
 16.00-19.00 mostly 16.00-18.00 some
 15.00 preferred labels 20.00-21.00 few 22.
 00 poor cond .50 White Seedless Type one
 label 23.00-23.50 Black Beauty Seedless
 one label few 22.00 Cardinal one label
 18.00 22 lb ctns/lugs AZ Thompson Seed-
 less 18.00 fair cond 10.00 Exotic 18.00
 MX Thompson Seedless med ord-fair cond
 6.00-12.00 White Seedless Type ord cond
 5.00-6.00 20-21 lb lugs bgd AZ Thompson
 Seedless 18.00 Flame Seedless 16.00 CA
 Perlette 17.00 Flame Seedless 14.00 White
 Seedless Type 20.00 Black Beauty Seed-

less 20.00 ---**KIWIFRUIT: MARKET**
 STEADY fits 1 lyr CL BOAT Hayward
 36s 6.00-7.00 39s 6.00-7.00 42s 6.00 10 kg
 ctns CL BOAT Hayward 36 sz 11.00 39 sz
 few 12.00 46 sz 9.00 ---**MANGOES:**
 MARKET ABOUT STEADY ctns 1 lyr
 MX Haden 10s 5.00-5.50 12s 5.00-5.50
 14s 5.00-5.50 16s 4.50-5.00 Tommy Atk-
 ins 9s 4.50-5.50 10s 5.00-5.50 fair cond
 4.50 12s 5.00-5.50 fair cond 4.00-4.50 14s
 5.00-5.50 fair cond 4.00 16s 4.50-5.00 ---
NECTARINES: MARKET ABOUT
 STEADY ctns 2 lyr trypk CA California
 Well Matured Summer Diamond 48-50s
 15.00 25 lb ctns lse CA California Well
 Matured Fantasia 64 sz 13.50-15.00 Fla-
 vortop 72 sz 13.00 84 sz 12.00 Summer
 Grand 56 sz 15.00-17.00 64 sz 15.00-16.00
 72 sz 12.00-14.00 few 11.00 84 sz
 10.00-12.00 Summer Brite 56 sz 17.00 64
 sz 16.00 72 sz 14.00 84 sz 12.00 ---
PAPAYA: 10 lb ctns HI AIR 10s
 11.00-12.00 ---**PEACHES: MARKET**
 SLIGHTLY LOWER ctns 2 lyr trypk CA
 California Well Matured Elegant Lady 42s
 13.00 56s 11.00 diamond princess 50s
 12.50 48-50s 12.00 25 lb ctns CA Califor-
 nia Well Matured Elegant Lady 56 sz
 11.00-12.00 64 sz few 13.00 Flame Crest
 64 sz 10.00 3/4 buctns SC No Grade Marks
 Crest Haven 2 1/2"up 14.00 2 1/4"up 12.00
 Redglobe 2 3/4"up 16.00 2 1/2"up 15.00 --
PEARS: MARKET STEADY 36 lb ctns
 CA U.S. One Bartlett 120 sz 18.50 1/2 ctns
 OR U.S. One Red D'Anjou 60s 10.00 40 lb
 boxes AG BOAT Packham Triumph 70s
 few 12.00-14.00 CL BOAT Bosc 80s
 18.00 100s 16.00 120s 14.00 ---
PERSIMMONS: OFFERINGS NONE ---
PINEAPPLES: ctns 1 lyr HI AIR 6s 12.00
 ---**PLANTAINS: 50 lb ctns CB 16.00 CR**
 14.50 ---**PLUMS: MARKET LOWER**
 28 lb ctns lse CA Ace 2x3x3 sz 15.00 2x3x4
 sz 13.00 Black Amber 2x3 sz 15.00 2x3x4
 sz few 13.50 3x4 sz 8.00-10.00 few higher
 El Dorado 3x3 sz 15.00 2x3x4 sz 13.00
 3x4 sz 12.00 3x4x4 sz 10.00-11.00 Friar
 2x2 sz 17.00-18.00 2x2x3 sz 15.00-16.00
 3x3 sz fair appear 12.00-13.00 Laroda
 2x3x3 sz 15.00-16.00 3x3 sz 14.50 2x3x4
 sz 13.00-14.00 3x4 sz 13.00 3x4x4 sz
 12.00-14.00 4x4 sz 12.00-13.00 3x4x5 sz
 9.00-10.00 Mariposa 2x3x3 sz 14.00-15.00
 3x3 sz 14.00 Nubiana 2x3 sz 15.00-16.00
 Santa Rosa 3x4 sz few 15.00 3x4x4 sz few
 12.00 4x4 sz few 12.00 Simka 3x3 sz few
 18.50 Wickson 4x4 sz 10.00 Catalina
 2x3x3 sz 17.00-18.00 2x3x4 sz
 14.00-15.00 3x4x4 sz 14.00 ---
POMEGRANATES: OFFERINGS NONE
 ---**PRUNES: OFFERINGS NONE**

Kutztown Produce

Auction

Fleetwood, PA
 July 15-21

Sat. Hay and Straw at 9:00 a.m. followed
 by produce

Report Supplied by Auction

APPLES: 1.00-5.00 1/4 BU., 2.25-6.50
 BU.
 APRICOTS: 8.00-20.00 1/4 BU.
 BEANS: GREEN 3.00-12.00 1/4 BU.,
 14.00-15.00 BU., YELLOW 7.00-12.50 1/4
 BU., 15.00 BU.
 BEETS: .20-.60 BUNCH, 4.00-5.00 1/4
 BU.
 BLUEBERRIES: 6.00-16.00 FLAT.
 CABBAGE: .20-.30 HEAD, 5.25-6.50
 BAG.
 CANTALOPES: .50-2.70 EACH.
 CHERRIES: SOUR 4.00-10.50 8 QT.
 FLAT; SWEET 8.00-9.00 8 QT. FLAT.
 CUCUMBERS: .50-6.00 1/4 BU.,
 1.50-8.50 BU.
 EGGPLANT: 3.00-7.25 BU.
 EGGS: .35-.75 DOZ.
 GARLIC: .90-1.60 LB.
 NECTARINES: 8.50 1/4 BU.
 ONIONS: 2.00-3.00 1/4 BU.
 PARLEY: 2.00 BOX.
 PEACHES: 13.50-25.00 1/4 BU.
 PEPPERS: 1.00-8.00 1/4 BU.; HOT
 12.00-15.00 FLAT.
 PICKLES: 4.00-7.00 1/4 BU.
 PLUMS: 5.50-15.00 1/4 BU.
 POTATOES: WHITE 1.00-4.50 5 LBS.,
 8.50 50 LBS.; RED 4.00-7.50 5 LBS.,
 12.00 50 LBS.
 RASPBERRIES: RED .60-1.40 1/4
 PINT.
 RHUBARB: 9.00 20 LBS.
 SQUASH: YELLOW .50-4.00 1/4 BU.
 SWEET CORN: 1.50-13.50 BAG.
 TOMATOES: .50-1.90 LB., 4.00-57.50
 BOX; CHERRY 3.00-9.00 12 PINT FLAT;
 HYDROPONIC .45-60 LB.
 WATERMELON: 1.40-3.20 EACH;
 YELLOW DOLLS 2.30 EACH.
 ZUCCHINI: .50-4.50 1/4 BU., 2.00-3.00
 BU.
 BEDDING PLANTS: .50-5.00 LOT.
 CUT FLOWERS: .80 BUNCH, 90-7.00
 BUCKET
 GLADIOLAS: .15-.40 EACH.
 HANGING BASKETS: 70-3.00
 EACH
 PERENNIALS 25-1.90 FLAT
 SHRUBS AND TREES 50-1.50
 EACH
 HOUSEPLANTS: 35-1.10 EACH.
 VEGETABLE PLANTS: 2.00 FLAT
 AUCTION DAYS WILL BE MON-
 DAY THROUGH FRIDAY AT 9:30 A.M.
 HAY AND STRAW SATURDAY AT 9
 A.M., FOLLOWED BY PRODUCE.

HAY, STRAW & GRAIN SALE
 Every Thursday at 1 p.m.
 Auction will continue
 all year long
Vintage Sales
Stables, Inc.
 (Rt. 30, 10 miles east of Lancaster
 in Paradise, PA)
 For info. L. Robert Frame, Sr.
 717-442-4181 business president
 215-458-8518 home

WE PAY CASH
 for seller financed
 Real Estate Notes and Mortgages.
 Are you receiving payments?
 Would you like cash now? Why wait?
 Explore your options with
Robert Tobey
CASH FUNDING
 1-800-670-2274
 Moriah Farm, Kleinfeltersville, PA 17039-0198

NOW OPEN
FOR OUR 54th SEASON

LAUREL FARMERS AUCTION MARKET

P.O. Box 633
 Laurel, DE 19956

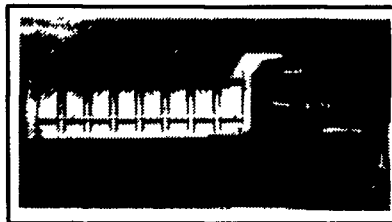
Marketing Fresh Produce
 Through Mid-September
 Watermelons, Cantaloupes, Sugar Babies,
 Tomatoes and More

Opening July 12 9 AM

"No buyer too big or small-
 Pickup loads to tractor trailer loads sold-
 Buy your own - No fee for buying
 No broker needed"

Please call for more information
302-875-3147 302-875-5136

ASPHALT PAVING SPECIALISTS



- Streets • Farm Lanes
- Parking Lots • Roads
- Recreation Areas
- Driveways

- FREE ESTIMATES -

Call Now For Prompt Courteous Service

800-422-8107

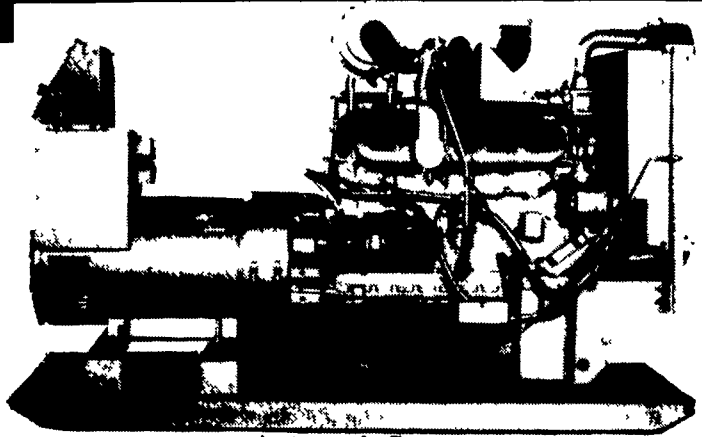
OR

717-336-7591



74 Kurtz Rd., Denver, PA

Crushed Stone - Asphalt Paving - Ready Mixed Concrete



Automatic Systems

- USED**
- 1 - 15 KW GASOLINE
 - 1 - 15 KW DIESEL

- NEW**
- 1 - 30 KW LP GAS
 - 1 - 60 KW PTO 540 INPUT
 - 1 - 60 KW PTO 1000 INPUT

24 HR SERVICE

MAXI-POWER

RADIO DISPATCH

330 Fonderwhite Rd.

Lebanon, PA 17042

717-273-4544

1-800-272-MAXI