

**ENDLESS MOUNTAIN**

**REAL ESTATE**

Rt. 15, Covington, PA 16917  
717-659-5684

**TIOGA COUNTY**

#528 5 BR, 2 bath ranch, 11+ acres, views for miles, top of hill location.

#533 60 cow operating dairy, (2) 20x60 cement silos, (1) Harvester HMC unit. Land in very good state of cultivation, single story dairy barn, very good condition, ranch home completely remodeled.

Call for more details.



**BRUSH VALLEY**

Amish equipped dairy farm on 88 acres. Good stream, dairy barn, 2 silos, 26x76 shop for chain saw business, 6 BDR house.



**BRUSH VALLEY**

Amish equipped farm with 4 greenhouses on 78 acres. Pond and 2 springs, 6 BDR house, good greenhouse business.

**SUGAR VALLEY**

Amish equipped house on 2 acres.

**NITTANY VALLEY**

13 acres with large house and barn. Excellent place for produce and store.

Call

Hiram Hershey, Broker  
Thomas Hershey, Realtor associate  
HERSHEY FARM AGENCY, INC.  
REALTORS  
1-800-880-3831 (new number)

**FINGER LAKES FARMS FOR SALE**

Benton area - 106 acres. Approx. 75 tillable. Excellent soils, level land. Exceptional four bedroom home and excellent barns.

Rushville-162 acres, 145 tillable, 48 tie stall barn, 1000 gal bulk tank, 18 x 50 silo, good four bedroom home.

Penn Yan-190 acres, 70 tie stall barn, four bedroom home.

212 acres, 200 tillable, 145 free stall barn with double-four parlor, two excellent homes.

285 acres, 75 tie stall barn, gewer ranch home, large, level fields.

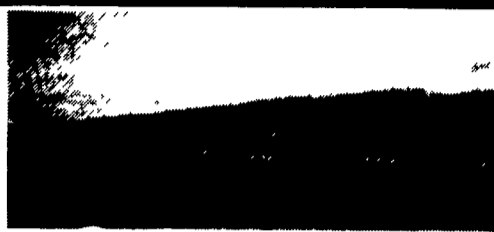
420 acres, two newer homes, 100 stall barn.

560 acres, 120 free stalls, three homes, river-bottom land.

**FOR ADDITIONAL INFORMATION CONTACT:**

William Botcher, Assoc. Broker  
5634 Teller Road  
Newark, New York 14513  
315-331-5868

HARRIS WILCOX, INC. BROKER



**PERRY COUNTY FARM FOR SALE BY OWNER**

- \* 307 Acre Farm Includes:
  - 180 Acres Of Flat Tillable High Yield Land (Ideal For Horses)
  - 80 Acres Of Woodland
  - 35 Acres of Additional Tillable Land Or Pasture
  - 12 Acre Pasture
- \* 2 Springs
- \* 5,000 Sq. Ft. Bank Barn & Other Out Buildings
- \* Trout Stocked Creek
- \* 4 Bedroom, 2 Bath Farmhouse

Note: Acreage amounts are approximate

CALL FOR MORE INFORMATION  
PHYLLIS RITTEL, Realtor  
(717) 898-6389

**FARM DELAWARE**

224 ACRES with Center Pivot Irrigation and underground piping for Traveling Gun. High Evesboro Sandy Loam Soils. Over 7000 feet of frontage. Large pond, beautiful area just over the DEMD Line 7 miles west of Laurel \$565,000 L-288

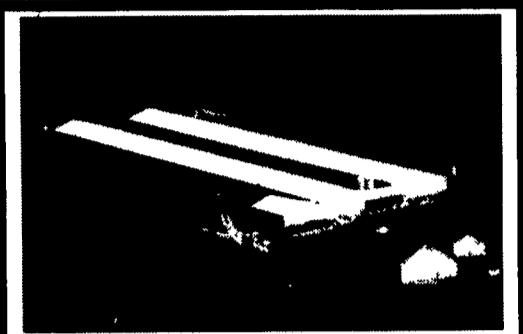
**OWNER FINANCING!** The Brittingham Farm: 295 ACRES in Gumboro with Center Pivot Irrigation. This farm has deep black top soil that assures high yield potential, 200 bushel corn not uncommon. 10,500 Feet frontage. \$2,195 per acre in entirety. Offers on lesser acreage will be considered G-427.

Also In Maryland...

Ghost Lights Farm 385 ACRES clear ground on U.S. Rt. 50 in Hebron, MD. Extensive highway road frontage and access. Potential galore!

Call LAUREL REALTY  
302-875-3000 or 1-800-887-3001  
We're Your Downstate Delaware Connection

BOONVILLE, N.Y.  
NORTHERN LEWIS COUNTY  
Death in family makes this 140 acre barn, dairy farm for sale immaculate five bedroom home Milking equipment and gutter cleaners stay Barn room enough for 70 milkers and 70 replacement heifers.  
**MUST SACRIFICE - ONLY \$259,000**  
For details - 315-346-1265  
RIVER TRAIL REAL ESTATE  
Floyd E. Zehr - Salesperson  
Or write: Box 351 RD 1, Castorland, NY 13620



**200,000 LAYER OPERATION**

Located in southern Lancaster County. Financial information available to qualified buyers. Modern facility with up-to-date equipment & back-up generator system. Agricultural zoning. 5 Bedroom home included.  
Call 1-800-325-2131. Q11522

AMERICAN HERITAGE

Willow Street 717/484-4700  
Quarryville 717/786-2131  
Strasburg 717/687-0599

Beautiful level 145 acre Dairy Farm in Amish Country. 2 Homes, 120 tillable, nice pond, lots of nice buildings, no fooling around \$100,000  
Ph 717-656-8793

**FRANKLIN CO., PA**

8.5A farmette, 4 miles south of Roxbury. Large real nice farmhouse 100+ years old, barn fixed for 275 veal calves, excellent veal calf contract available. Would also make excellent horse/ beef/ hog farm. Beautiful Blue Mountain 1/2 mile in background.

\$150,000 OBO  
No Sunday Calls  
717-264-8301

**SOUTHERN NEW YORK DAIRY FARMS**

End of road, 200A, pond, free stalls, parlor, 2 silos, heifer barn, shop, machinery barn, 5BR farmhouse, all good condition \$295,000, Owner terms.

175 A, tie stall barn, silo, pole barn, 4BR farmhouse, \$160,000

153A, Bank barn, 2 large sheds, river frontage, 4BR farmhouse, all in good condition, \$150,000

LEW REAL ESTATE INC.  
141 Chestnut St  
Corning, NY 14830  
607-937-5637

**ERA® ALEXANDER REALTY, INC.**  
443 East Baltimore Street  
Taneytown, Maryland 21787  
1-800-206-1221  
Each Office Independently owned and operated

220 AC FARM - Can be dairy or cattle feeding farm, includes silos w/unloaders auto bulk feeders, computerized feeders auto take off milkers and 3 farm houses For more info call Henry Alexander 1-800-206-1221. MLS#FR1240.

HORSE LOVERS DELIGHT- 96x150 barn w/26 box stalls and wash area, tack room and open training and show arena accessible for vans & trailers Beautiful Tri-Level home. Call Henry Alexander MLS#25364

Both of these farms are a must see. Call today for a complete itemized list.

**LAND WANTED**

**ATTENTION FARMERS AND LANDOWNERS**

DEAL DIRECTLY WITH DEVELOPER. LAND MUST BE IN CHESTER OR DELAWARE COUNTY.

REPLY TO:  
P. O. BOX 902  
THORNDALE  
PA 19372

**POTTER COUNTY, PA**

HUNTERS & SPORTSMEN'S GROUPS TAKE NOTICE! 811 Acres of the great outdoors. Very secluded with a recent survey with boundaries marked. Deeded access on private, gated road assures remoteness yet accessibility. Splendid views plus plenty of trails. Escape the crowds of the city! A truly superior property. Sale price \$365,000 (#AF-811.2)

A PIECE OF HEAVEN. Four wooded parcels, maintained Township road frontage and access to State Forest along the back of the properties via the Cow Hill Trail. Electric close by, surveyed, approved conventional sewage test. It's not how much you own, it's where and this has the where! ie; Lot 1B-8.4 Acres, \$16,000 (#TH-1A-D)

SOLITUDE, PRIMITIVE, PEACE & SERENITY - all spell out the valuable assets obtained by owning this 402 acres not far from Lyman Run Lake. This parcel of woods most certainly would meet all the needs of the outdoor sportsman. A rare jewel at \$141,000 (#PL-402)

Red Lodge Real Estate  
1-800-342-5025

**LANCASTER COUNTY FARM**



Beef farm on 84 acres, which was originally part of Robert Fulton Birthplace

- \*Farmbuildings (50x50 Beef Barn, 25x50 Corn Barn, 20x56 barn & 30x100 Feed Barn, 40x72 Implement Shed \*20x40 Utility Barn)
- \*3 Add'l building lots\*
- \*Sloped/Level Terrain w/ Loam Soils\*
- \*Beautifully Restored 3 Story Colonial Style Millers Home Overlooking Conowingo Creek \*5-6 Bedrooms & Over 2700 Sq. FT Of Living Area\*
- \*Tenant House\* 2 Silos

Call Earle Hershey, Jr, (717)786-1300 (O) or (717)786-2440 (Home)

CENTURY 21 WANGER-HATTON REALTORS  
QUARRYVILLE, PA (717)786-1300

**WIMPLE ASSOCIATES**

450 ACRE DAIRY: has handled 200 head. 300 acres tillable, limed and fertilized to specs. Miles of good fencing. 2-3000 maples to tap. 2 1/2 miles frontage. 78 stall pipeline barn, Badger cleaner, 2 silos. 4 other large barns in good shape. 2500 & 3000 bu. Butler grain bins. Nice 5 BR home set under large maples. Near Pennsylvania border. JUST LISTED! \$240,000

TROPHY DEER COUNTY: 12 acres; all woods. Near Cooperstown. \$4,800 JUST LISTED!

86 COW FARM.. \$50,000 DOWN and owners will hold mortgage on this 258 acre farm near Richfield Springs. 150+ tillable high lime soil. Barn has 86 stalls with 67 on pipeline, 2 unloading silos, 36x60 machine shed. Nice 8 room Colonial \$250,000

**Mort Wimple Associates**  
Real Estate Sales - Management

"ESTABLISHED 1953" U.S. ROUTE 20  
SLOANSVILLE N.Y. 12160  
FREE FARM CATALOGUES (518) 875-8355  
FAX: (518) 875-6749

Excellent Commercial Location, 2+ acres with older 2 sty home, great future potential, \$150,000 #1306

Just Reduced, 107± acre farm, wooded, open w/nice trout stream, frame bank barn, det garage + 2 sty dwelling, 6 bdrms, bath, kit, lr, family rm, hobby farm in a recreation area, now only \$129,000 #1294

Opportunity abounds on this 189 acre Tioga County farm, could be dairy or general farm, many purchase options available. Call for details. #1274

Views are absolutely gorgeous from this very elite horse farm, 34± acres w/beautiful 4400 sq ft ranch style home, horse barn w/stalls, many extras too numerous to mention, quality thru-out \$271,900 #1283

Koch REAL ESTATE AND INSURANCE  
9 Cone Street  
Wellsboro, PA 16901  
717-724-3500

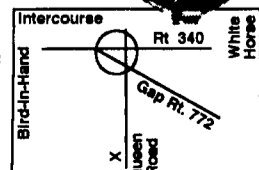
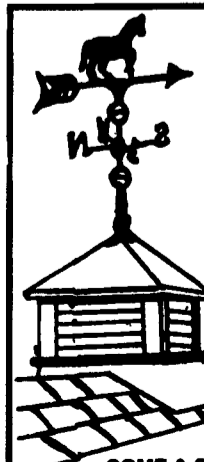
**FOR GARAGES, HORSE BARN, GAZEBOS, STORAGE BARN, COMMERCIAL BUILDINGS, ETC.**

**Cupolas and Weather Vanes**

REDWOOD BIRD FEEDERS  
**MANNIE'S WOOD SHOP**

58 Queen Rd (1/4 mile S. of Intercourse)  
Gordonville, PA 17529

Ventilate and Decorate  
Cupolas Manufactured & Custom Built



COME & SEE OUR INVENTORY ON DISPLAY