



(717) 768-8225
(800) 223-KEIM

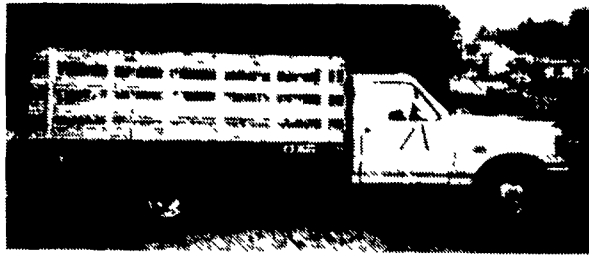
RT. 30 Lincoln Highway East
Paradise, PA 17562

YOUR TRUCK, VAN & 4x4
HEADQUARTERS
1-800-223-KEIM

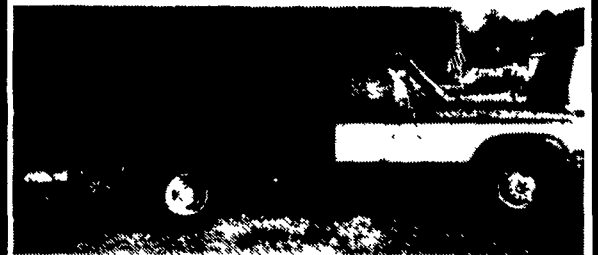


1986 CHEV. CREW CAB DUALLY
454 V-8, Auto, Air, Tilt, CC,
PDL, PW with sleeper, only
59,000 miles-Near perfect condition

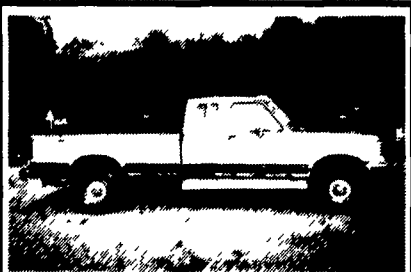
**Find a Friend - Buy Both and We Will Take an Additional \$500.00
OFF EACH TRUCK - YOU SAVE - THEY SAVE!!**



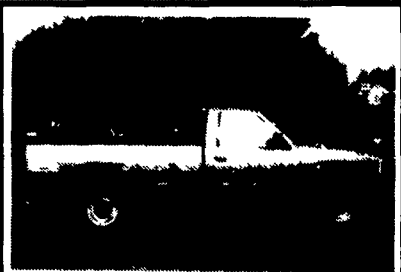
1988 FORD F-350 STAKE
Only 19,000 Original miles
V-8, Auto, Absolutely Spotless



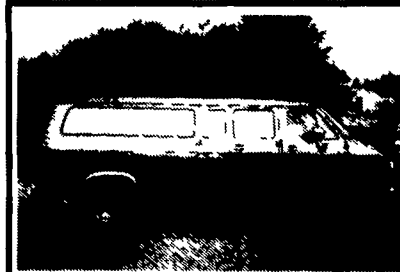
1986 FORD F-350 STAKE
8' Bed-Great for the Smaller Jobs
Good Good miles, V-8, Auto-Clean



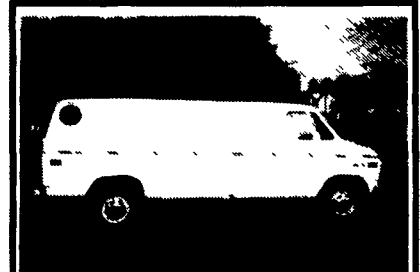
1987 FORD F-250 EXT CAB 4X4
This XLT Lariat only has 64,000
miles, V-8, Auto, Air, Tilt, CC, PW,
PDL, Green & Tan Real Sharp



1991 CHEVY 3/4 TON 4X4
8600 GVW V-8, Auto, Air,
Clean As New- Only 47,000
Miles



1994 CHEVY 15 PASS VAN
V-8, Auto, Air, Tilt, CC,
Only 87,000 Miles - Ready to
Be a People Mover

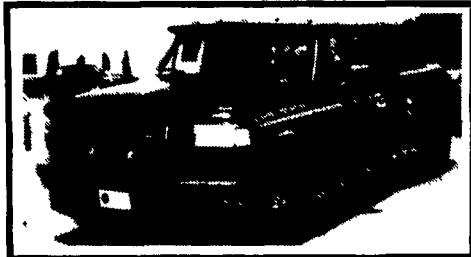


1991 GMC 1 TON WORK VAN
V-8, Auto, Air,
Only 46,000 Miles
Ready to GO!

Mark VII's • Pickups • Broncos • Stake Body • Crew Cabs • Crew Cabs

LYNXS • TOPAZ • Diesel Pickups • Mustangs • Thunderbirds

Marquis • Grand Marquis • XLTS • Custom Vans



**Large Selection
New & Used
F-350 - Duallys**

Diesel & Gas



'93 FORD RANGER XLT
Super Cab, 4x4, 6 Cyl., 5 Spd.,
A/C, #4795B
\$17,999



'92 FORD AEROSTAR XL
Extended, 6 Cyl., AT, Dual A/C,
#P1961
\$16,599



**'92 FORD E150 MARK III
CONVERSION VAN**
V8, Dual A/C, TV, #P1960
\$19,999



**'93 FORD EXPLORER
SPORT**
6 Cyl., 5-Spd., A/C, #P1938
\$19,699



'93 FORD F150
Lighting, 8 Cyl., AT, AC, Loaded
12,000 Mi. #4278B
\$16,999



'93 FORD EXPLORER
2 Dr., Sport, 6 Cyl., 5-Spd., A/C
#P1932
\$21,999



**'93 FORD RANGER
XLT**
4 Cyl., 5-Spd., 9,000 Mi.,
#P1927
\$12,399



**'92 FORD
EXPLORER XLT**
AT, Trailer Tow, Loaded #4738B
\$20,999



**'92 FORD AEROSTAR
XL**
6 Cyl., AT, A/C, #P1958
14,999



**'90 FORD
CLUBWAGON XLT**
9 Passenger, 5.8 V8, AT,
Loaded w/Trailer Tow #4832A
\$12,999



**'92 CHEV. SID
TAHOE**
6 Cyl., AT, Low Miles, #P4641A
\$10,999



'90 FORD F150 XLT
302 V8, 5-Spd., Cassette,
#4734A
\$11,799



'90 FORD F150 XLT
4x4, V8, 5-Spd., Loaded,
#4793A
\$14,999



**'90 FORD
AEROSTAR XL**
AWD, 8-Cyl., AT-Cassette,
Only 18,000 Miles, #P1968
\$13,999

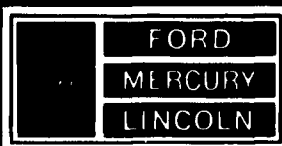


**'90 CHEV. G20
CONVERSION VAN**
V8, AT, TV, VCP, 22,000 Mi.,
#6011A
\$16,999



**'93 FORD BRONCO
XLT**
4x4, Black w/Silver, 5.8 V8,
Loaded #P1967
\$22,499

Unless the Sheehy Emblem is on Your Car or Truck...You Probably Paid too Much!



LEBANON

PARTS DEPT. OPEN
DAILY 8-5
SAT. 8-12
717-273-8168

-20th & CUMBERLAND STS. - RT. 422 WEST

9-9 DAILY; 9-5 SATURDAY • SHEEHY HOTLINE : (717) 272-7671 OR 533-5293

Tempos • Cougars • Continentals • Town Cars • 4x4s • Box Vans • Rangers