



Freightliner COE
FLA966AT Cummins NTF350
 RTX12609A Dual 130 Gal. Tanks,
 11R22.5LP., A/C, P/S, Wheelbase
 154"
8 UNITS TO CHOOSE FROM



Ford 9000 Cummins NTC
 350, Fuller RTO-9508LL Henderick-
 son Susp., Wet Line, Steering Tires
 M-844, Rear Tires 11R22.5 A/C, P/S,
 Tri-Axle

\$10,500



1983 Ford LTL 9000 NTC
 400 Cummins RTO 14613 Jake
 Brake, Wet Line, Wheel Base 210"
 36" Sleeper.

\$9,900



DUTCHMAN'S
TRUCK SERVICE, INC.

2355 N. READING ROAD, P.O. BOX 325
 PA TURNPIKE EXIT 21
 DENVER, PENNSYLVANIA 17517

"A GOOD DEALER IS A GOOD INVESTMENT"

PHONE 717-336-2867

PA 1-800-769-9887

FAX 717-336-2774

HOME 717-656-9943

PHIL HIGGINS
NEW TRUCK SALES



AUTO BODY & SALES

1701 B DIVISION HWY
 New Holland, PA • 717-355-0611

Specializing in Rebuilt Collision Damage Vehicles



'91 Ford F-250 XLT Lariat
 7.3L Diesel, AT, PS, PB,
 AC, Tilt, Cruise, PW, PDL,
 PA, Salvage
\$8,500



90 Ford F-250 Custom
 300 FI, 5 Spd., 20,000
 Mi., Roof Damage,
 PA Salvage
\$5,400



92 Ford F-150
 XLT Lariat 4x4
 302 AT PS PB AC
 Tilt, Cruise, PW, PDL Cass.
 50,000 Mi. PA Salvage
\$8,700

USED TRUCKS



'93 Chev. Dual Wheel 3500
 Utility Body, 350 EFI, Auto.,
 PS, PB, 27,000 Miles
\$17,400



94 Chev. Ext. Cab, Dually, Silverado 6.5
 Turbo Diesel, 5 Spd., PS, PB, AC, Cruise,
 Tilt, PW, PDL, Bucket Seats, Console,
 AM & FM Stereo Cass., 600 Miles
\$29,600

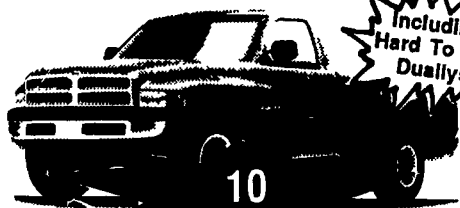
Financing
 Available

MARTIN'S AUTO SALES

1025 W. Main St., New Holland, PA 17557
(717) 656-6621

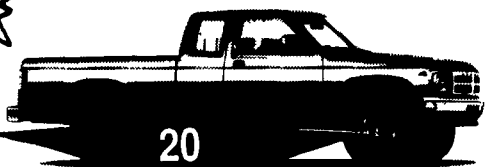
\$\$ SAVE \$\$ SAVE \$\$ SAVE \$\$ SAVE \$\$ SAVE \$\$ SAVE

1994 DODGE RAM
T-300 PICKUP



10
 AVAILABLE

1994 DODGE DAKOTA
CLUB CABS 2WD &
4WD CLUB CABS



20
 AVAILABLE

Including
 Hard To Get
 Duallys

We Are One Of The Largest Volume Dodge Truck
 Dealers East Of The Mississippi

Volume Stocking Permits Volume Discounts!

Huge Inventory of Pick-Ups & Utilities
 All Local Trade-Ins — No Auction Units



Joe Dell's

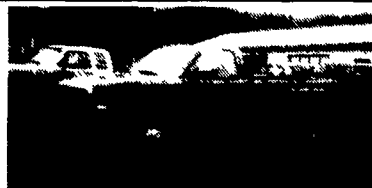
DODGE
CHRYSLER
PLYMOUTH

ROUTE 422, ROBESONIA, PA. (215) 693-5855

"National
 Award-Winning
 Dealer"

"Ask A Friend About Us"

1-800-800-2623



1994 Dodge RAM 3500 Laramie S.L.T.
 Dualie, Cummins Turbo Diesel, Auto, PS,
 PB, PW, PDL, Cruise, Tilt, Air, Trailing
 Tow Package, 410 Ratio, 7-Year 100,000
 Mile Engine Warranty, Black & Red
\$28,500



1993 Chev Beauville 8 Pass. 6.2 Litre
 Diesel, All Options, Incl Trailing
 Package, Two-Tone Tan, 16,000 Miles
 With Bal of Factory Warranty, Like New
\$19,500



1994 Dodge 3500 1 Ton, 9 Ft Stake Bed,
 Cummins Turbo Diesel, 5-Speed, PS, PB,
 AM-FM, 11,000 GVW, 14,000 Miles, Will
 Sell With or Without Bed With Bal of
 Factory Warranty, Red, Ex Cond
\$22,500

A&J Auto Sales

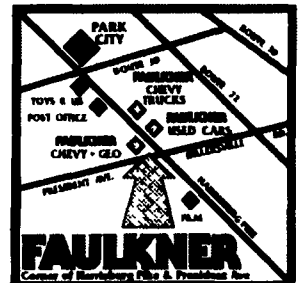
798 E. Main St. Rt. 322 East
 Ephrata, PA 17522

717-733-2873

GUARANTEED
LOWEST PRICES
ON NEW
CHEVROLET
TRUCKS, BLAZERS,
VANS &
SUBURBANS

FAULKNER

LANCASTER'S LARGEST EXCLUSIVE TRUCK CENTER



87 Heavy Duty 3/4
Ton 4x4
 350 V-8, Air Cond.,
 Low Miles
\$8,495



88 Aerostar XL
 7 Passenger, Auto, Loaded
 Was \$7,495
\$6,895



92 Chevy Silverado
 350 V8, Auto, AC, Loaded
 Was \$15,995
NOW \$15,495



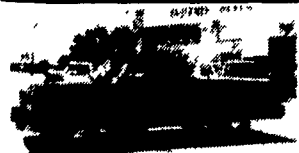
91 Chevy S-10 Blazer
 4.3 V-6; AC, Loaded
 Was \$15,995
\$15,295



91 Dodge D-150
 23,000 Miles, 8 Cyl., Auto
 Was \$10,995
NOW \$9,995



89 GMC Sierra 4x4
 Sport Side; Sherrod
 Conversion, 350, Loaded
 Was \$14,995
\$14,395



93 Dodge 3/4 Ton
Cummins Turbo Diesel
 Auto Trans, "LE" Package,
 All Power Options
\$19,495



93 Dodge Caravan
 20,000 Miles, 7 Pass, AC,
 Was \$16,795
\$16,295



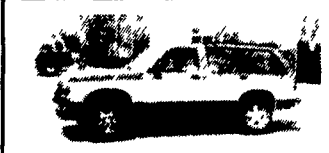
90 Chevy K-1500 4x4
 Sports Side, Loaded
 Was \$12,995
\$12,395



92 GMC Sierra 4x4
 Loaded, 26,000 Miles, 350
 Was \$17,995
\$17,395



93 Astro CL
 8 Passenger, 2 Tone Teal &
 Silver, All Power Equipment,
 13,000 Miles
\$18,495



91 Chevy S-10
Blazer 4 Dr.
 Loaded, 4-Spd., Auto, 4.3 V6
 Was \$16,495
\$15,500

HARRISBURG PIKE, LANCASTER • 397-0601