

35 TRUCKS & TRAILERS

91 Dodge D-350 w/Dual Wheels, Cummins Engine, 11' Mechanic Bed, Loaded, 28K Miles, \$16,500. (717)225-7150

9 Ton General Trailer, 3 Axle, Complete Rebuild, Paint, Brakes, Wires, Lights, Oak Deck. (215)234-8278.

1986 Ford F350, 6.9 Liter diesel, 4 speed, recent inspection, new tires, w/o 12' van body, \$4,995 OBO. (717)367-9044.

Truck Boom, folds up behind cab, 25', 4000lb., IM-TCO. \$8500. 717/354-3105.

KEYSTONE TARPS
Is A Manufacturer Of Custom Tarps

- Truck Tarps
- Cargo Straps
- Tarps Straps
- Gloves
- Custom Covers
- Used Railroad Ties
- Storage Covers
- Boat Covers



Service and Sales
R.D. #1, Box 329A Sturgart
Cogan Station, PA 17728 (717) 435-0752

Huntingdon Equipment

Rentals Available **GOOD USED EQUIPMENT**

Huntingdon Valley, PA • 215-672-9667 • 1-800-543-3833 • Eddle



1985 F-600 8 2 Diesel, Auto, 5 Man Cab, Utility With Rollup Door On Rear, Clean, Low Mileage, 1 of 3.



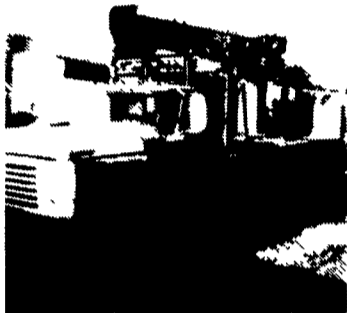
1970 Ford 800 V8 5 Speed with Aux. Trans, 39,000 GVW, VAC Brakes 13'4" Fran Fleet Maintained, 73,000 Miles.



International Presser Digger This Unit Is Ready To Work, Priced For Quick Sale \$9,500 \$8,500



Holan 70' Double Bucket 75' working height mounted on 1981 Western Standard, 6x6 Flatbed, CAT 3208, Auto



Need a Lift? We Have A Large Selection Of Boom Trucks Up To 14,000 lbs. Cap. Some With Post Diggers.



Bucket Trucks 28' to 65' Gas and Diesel. Call For Details.

DIGGER DERRICKS/AERIAL BUCKETS/UTILITY EQUIPMENT

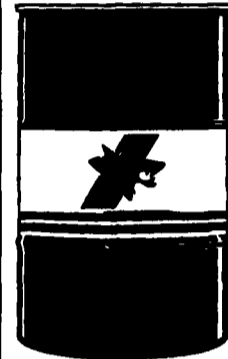
EPHRATA AUTO PARTS

1775 W. Main St. Ephrata, PA 17522 717-733-2880
1109 Division Hwy Blue Ball, PA 17506 717-354-0717



BATTERIES

- Tractors ▪ Generators
- Trucks ▪ Cars & More



15W-40 \$195.95
Hydraulic Tractor Fluid \$184.95
Hydraulic Oil \$149.95

ALSO AVAILABLE



Nicest Pre Owned Trucks Anywhere!

RTE. 422 WEST LEBANON, PA

(Across From Lebanon Valley Mall)



PHONE 717-274-2000

Business Hours Mon -Thurs 9-9 Fri & Sat 9-4

SPECIALIZING IN HEAVY DUTY TRUCKS

<p>18 Ft. Box 87 Ford F-700 NO C.D.L. Needed, 23,100 GVW, 370 gas, 5 Spd. Trans., 2 Speed Axle, 34,800 Miles</p>	<p>1 Ton Chassis 4x4 94 Ford F-350 XL Short 137 W.B. Like new, 5,000 Miles, 460 I.I. 5 Spd., O/D, Limited Slip, 4:10 Axle, 11,000 GVW</p>	<p>Big & Long 93 Ford F-Super Duty Chassis 7.3 Diesel, 5 Sp., O/D, A/C 15,000 GVW, 185" W.B. Only 6,400 Miles</p>	<p>Diesel 4 Door 4x4 88 Ford F-350 Big & Strong, Waiting To Work, 7.3 H.D., 5 Spd., O.D., A/C, Dual Tanks</p>	<p>Diesel 4 Door Dually 93 Ford F-350 XLT 7.3 Diesel, 5 sp. o/d, A/C, All options, Custom Wheels & Running Boards, 28,000 Miles</p>	<p>Diesel 4 Door Dually 93 Ford F-350 XLT Lariat Perfect, 30,600 miles, 460 f.l., AT, A/C, Limited Slip, 4:10, New Truck Warranty</p>
<p>F-250 Super Cab 89 Ford XLT Lariat Fuel inj., 460, AT, A/C, Very Strong Truck, 8800 GVW, Ready For Work</p>	<p>F-250 4x4 92 FORD XL New Truck Warranty, 33,000 Miles, 351 F.I., AT, H.D., 8600 GVW</p>	<p>Diesel Super Cab 4x4 93 Ford F-250 XL Only 18,000 Miles 7.3 Diesel 5 Sp., O/D Air Conditioning, Heavy 8300 GVW, Real Nice</p>	<p>Club Cab Dually 93 Dodge 1 Ton Cummins Turbo Diesel, intercooler, 5 Sp., A/C, Chrome Wheels, Tow Pkg., Only 10,000 Miles, Bal. Factory Warranty</p>	<p>Diesel 4 Door Dually 93 Ford F-350 XLT Lariat Perfect, 30,600 miles, 460 f.l., AT, A/C, Limited Slip, 4:10, New Truck Warranty</p>	<p>Cummins Turbo Diesel Dually 91 Dodge D350 LE Real Powerhouse, Auto, A/C, 44,000 Miles, Perfect \$18,900</p>
<p>Dump Truck 90 Ford Super Duty Heavy 14,500 GVW, 10 Ft., Dump Body Cab Protector, 460, AT, A/C, 23,000 Miles</p>	<p>Dodge 4x4 91 Dodge LE Good Looker, 360 V8, AT, A/C, 24,000 Miles, Factory Warranty</p>	<p>Diesel 4 Door Dually 93 Ford F-350 XLT 7.3 Diesel, 5 sp. o/d, A/C, All options, Custom Wheels & Running Boards, 28,000 Miles</p>	<p>4 Door 4x4 93 Ford F-350 XLT Lariat Perfect, 30,600 miles, 460 f.l., AT, A/C, Limited Slip, 4:10, New Truck Warranty</p>	<p>Dump Truck 90 Ford Super Duty 460 F.I., 5 Sp O/D, A/C, Fold Down Side, 48,000 Miles</p>	<p>Cummins Turbo Diesel Dually 91 Dodge D350 LE Real Powerhouse, Auto, A/C, 44,000 Miles, Perfect \$18,900</p>
<p>3 Ton Big Shot 89 Ford F-700 Cabriolet Ford Turbo Diesel, 2-50 Gallon Fuel Tanks, 5th Wheel Plate, Rear Sleeper, The Ultimate Hauling Machine, 13,000 Miles</p>	<p>4x4 Utility 87 GMC 2500 350 V8, Auto, 8 Ft. Body Meyers Power Angle Plow</p>	<p>Enclosed Utility 89 Ford F-350 351 f.l AT, A/C, 9 1/2 ft. Reading Box, 82,000 Miles.</p>	<p>Crew Cab Dually 89 Ford F-350 XLT Lariat Excellent Tow Machine, 27,600 Original Miles, 460 I.I. AT, A/C, Running Boards, Swing Out Mirrors, Ready To Tow</p>	<p>Diesel Cargo Van 85 Ford E-350 A/T Air Conditioning, Tow Pkg., Class 3 Hitch, 8300 GVW</p>	<p>Super Cab Dually 88 GMC 3500 All Dressed up, 454 F.I., A/C, Gooseneck Hitch, Running Boards, Nice Truck</p>
<p>Mechanic's Special 86 Ford E-350 Cube Van 14 1/2 foot Aluminum Body 6.9 Diesel Automatic Very Clean, Very Straight 56,000 Miles Needs Engine Work \$5,500</p>	<p>Diesel 3/4 Ton 4x4 93 Chevy Real Nice, 6.5 Turbo Diesel, AT, A/C, Tow Pkg., Remainder, 5 Yr. Warranty, Heavy 8600 GVW</p>	<p>Diesel 1 Ton 87 Ford F-350 Strong Diesel, AT, A/C, 64,000 Miles, Dual Tanks, Excellent Body</p>	<p>Diesel 3/4 Ton 4x4 93 Chevy Real Nice, 6.5 Turbo Diesel, AT, A/C, Tow Pkg., Remainder, 5 Yr. Warranty, Heavy 8600 GVW</p>		