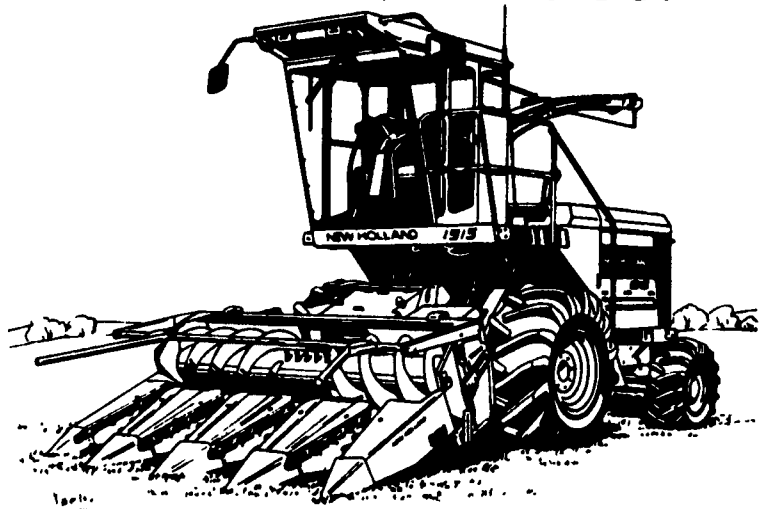


1915

In Stock - READY TO GO!

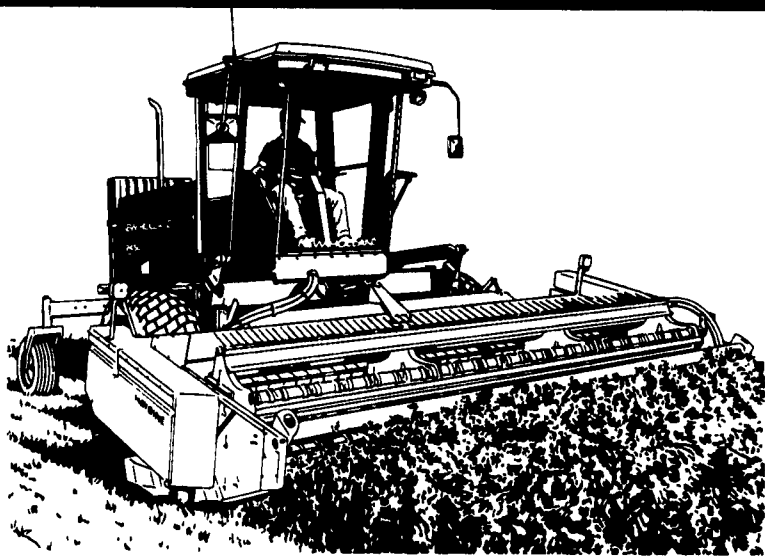


PRECISION HARVESTING

The Model 1915 self-propelled forage harvester makes it easy to make high-quality forage. The rugged 26-inch-wide cutterhead uses 12 full-width knives to deliver a fine, uniform chop for the best quality feed. And, the Accucut™ knife sharpening system makes it easy to chop at peak efficiency. Stop in and get the details.



SPEEDROWER PERFORMANCE



COMFORTABLE AND CONVENIENT

The Model 2450 windrower provides legendary Speedrower® performance and it's extra-comfortable and easy to operate. You'll like the:

- Unmatched header visibility
 - Fuel-efficient 87-hp Genesis™ diesel engine
 - Wide 102-inch chevron-design rolls
 - Easy access to service points
- See the Model 2450 Speedrower today.



QUALITY USED EQUIPMENT FOR SALE

SPECIAL MENTION

NH 1495 HAYBINE • Diesel Engine • Hydro • cab • Air Cond.

- (2) NH 489 Haybines
- AC D17 Tractor w/Loader
- IH 700 Plow Auto Reset Semi-Mount
- IH 1086 Tractor
- NH 488 Haybine
- Deutz Allis 6260 Tractor
- NI 7 Ft. Cut-Ditioner
- Hesston PT7 Mower Conditioner

BHM FARM & LAWN EQUIP.

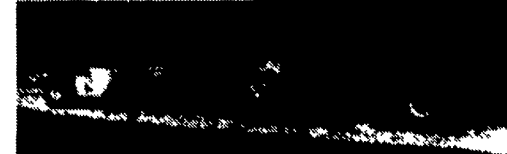
SALES - PARTS - SERVICE
Route 934 - 2 Miles North of Annville, PA
Telephone 717-867-2211

Complete Irrigation System

- 1 - 6x6 pump with 110 H.P. Deutz
- 1 - 6x6 PTO pump 1000 R.P.M.
- 6000 ft of 5 to 8 inch pipe
- 24 valved stations with 4 Rain Bird guns
- Misc. Fittings • Pipe Wagon
- Will cover 20 acres in 1 setting

Willow Dell Farm
Lebanon County
717-866-7543

Take Exit 20B
Off Of 83, 5 1/2 Mi. West
To Belmont Farm.



JD 4040
90 HP, Good Rubber, Rebuilt
Engine, Ready To Work
\$14,000
410-833-9091

FORRESTER FARM EQUIPMENT LTD.

1475 Orchard Rd. Chambersburg, PA 17201
Phone: 717-263-0705
Sales - Parts - Service

BEST BUYS IN USED TRACTORS

- | | |
|--------------------------------------|--|
| Ford 8N | Grove 14' Forage Wagon |
| Ford 4000, 1964 Diesel | NH 479 9' Haybine |
| Ford 7610 4WD w/L.SOLD | NH 479 Haybine |
| Ford 6640S, 4WD | (3) NH 489 Haybine |
| JD 4010 | IH 990 9' Haybine |
| IH Super C w/Plow, Disc & Cultivator | IH 1190 9' Haybine |
| IH Farmall C | NH 770 Chopper w/Hay Head & 2 Row Corn |
| | NH 770 Chopper & Grass Head |
| | NH 357 Grinder Mixer |
| | NH 350 Grinder Mixer |
| | (2) Gehl Forage Boxes |
| | JD 14T Baler w/Thrower |

- USED FARM EQUIP.**
- S45 Dion Silage Blower
 - New 6 Row White Cultivator
 - 10' Ford Field Cultivator
 - 10' Brillion Culti-mulcher

Located: 1 Mile Off Exit 8, On 696 North To Orchard Rd.

Hours: 8:30-5:00 Mon. Thru Fri.
8:30-12:00 Saturday

USED EQUIPMENT

- Ready For Delivery -

- Belarus 310, 36 HP, 4 WD
- Farmall H, Runs Good
- MF 510 Combine w/4 Row Corn Head and 13 ft. Grain Head
- JD 300 36 ft. Grain Auger w/elec. motor
- Croni 5 Ft. Finishing Mower w/3 Pt. Hitch
- Dyna Vent 7 HP Bedding Chopper, New Rotor (Rebuilt)
- WIC, 11 HP Chopper, 3 yrs. old
- Jamesway 20 Ft. V-3 Unloader
- Jamesway 14 Ft. V-3 Unloader
- Jamesway V-1 & V-2 for Parts
- Badger 20 Ft. Ring Drive Unloader
- Badger Free Stall Drive Unit
- Ford 5-Bottom Semi-Mount, Automatic Reset Plow
- JD 5-Bottom Semi Mount Plow
- MF 4/16 4 Bottom Plow
- Case 3-Bottom Plow
- Uebler 790 Feed Cart
- New International Corp. Mowers, Blades & Rock Rakes
- 10 Ton Roller-Works Good
- 2 Replacement Buckets for Front End Loader
- Speed King 2 Bag Belt Gear Driven Mortar Mixer

CALL NOW First Come, First Served

ROVENDALE AG & BARN EQUIP.

WATSONTOWN, PA 17777
717-538-9564 OR 717-742-4226
Exit 31, I-80 to I-180 Watsonstown Exit
Hours Mon-Fri 8 to 5 Sat 8 to 12

EDWIN HORNING & SONS FARM MACHINERY

248 Meadow Valley Road, Ephrata, PA 17522

(717) 733-7408

FAX 738-4897

TRACTORS

- JD 2630 Indpt. PTO.....\$8,500
- JD 2640 Indpt. PTO.....\$8,900
- JD 655 riding mower, hydro, diesel.....\$6,200
- IH 756 diesel, TA, 3 pt, 2 shafts.....\$6,800
- Same Saturno 80 4x4 w/Handy Loader..\$8,000
- Farmall Super C w/Fast Hitch.....\$1,500

CORN PICKER

- NI 325 2 RN 12 roll bed (late model) nice \$4,800
- NI 323 1 R steel rolls.....\$1,950
- NI 324 2 RN 12 roll bed (late model).....\$3,000

TILLAGE EQUIPMENT

- Case IH #14 V ripper 5 shank w/coulters, depth wheels.....\$3,950
- IH 510 drill 18x7 grass attach. d.d.....\$1,950
- JD 8300 drill 21x7 grass attach. d.d....\$2,650
- IH 45 field cult., pull type 17', hyd. fold \$1,450
- IH 45 field cult., pull type, 13'.....\$1,200
- White 508 plow, 4x18 cushion trip.....\$1,050
- JD #1450 plow, 4x16 trip.....\$950
- JD 8300 drill, 18x7.....\$2,250
- JD 8200 drill, 18x7 single disc grass/attach.....\$1,150
- White 252 disc, 9', nice.....\$1,850
- IH 510 drill, 16x7, single disc.....\$1,050
- IH 56 4R corn planter w/dry fert.... \$650-\$850
- JD 494A planter 4RN, dry fert.....\$350
- JD 8300 drill, 21x7 DD, grass attach.....\$2,950
- JD 7000 planter, 4x30 conservation w/no-till, insec., 100 monitor, nice..\$6,200
- Rhino 7T chisle plow, 3 pt.....\$675
- JD 2700 plow, 5b, variable width, spring reset.....\$2,950
- JD 535 trailer sprayer, 30' booms, 350 gal. tank, nice.....\$1,500
- Oliver 252 disc, 12'.....\$975
- AC field cultivator, pull type, 11'.....\$1,050
- MF 2R corn planter w/fert., 3 pt.....\$425
- IH 450 plow, 3x16 spring reset, 3 pt.....\$1,650
- IH 56 corn planter, 2R, DD.....\$800
- Brillion packer seeder 10', nice.....\$2,700
- Kinze 4R no-till corn planter w/liquid, nice.....\$4,800
- JD 7000 no-till 6x30 corn planter, dry fertilizer.....\$4,800
- IH 720 plow, 5x16 spring reset.....\$2,500
- IH 56 planter 4R, late model.....\$900

HAY EQUIPMENT

- NH 315 baler w/chute.....\$2,200
- NH 276 baler w/thrower.....\$2,400
- Kuhn GRS25 rake/tedder combo.....\$2,200
- JD 336 baler w/ejector.....\$3,200
- NH 411 discbine 540 rpm.....\$5,500
- JD 1217 mower cond.....\$2,500
- NH 311 baler w/75 ejector.....\$5,500
- NH 276 baler w/thrower.....\$2,800
- NH 311 baler w/75 ejector.....\$5,500
- NH 477 haybine.....\$2,300
- NH 456 trailer mower w/crimper hitch.....\$1,650
- NH 311 baler w/dolly wheel.....\$1,450
- NH 70 bale thrower for 311 baler.....\$950
- NH 402 crimper.....\$950
- JD 1219 mower conditioner, (1990).....\$4,850
- NH 565 baler w/hyd. belt #72 thrower, very nice.....\$8,500
- NH 311 baler w/70 thrower.....\$5,700
- FNH 489 haybine.....\$4,200
- JD 450 pull type sickle bar mower.....\$1,250
- IH 1100 trailer mower, nice.....\$950
- NH 455 mower, crimper attach.....\$850
- Ford NH 489 haybine.....\$4,900

FORAGE EQUIPMENT

- JD 716 wagon 3 beater, roof, tandem gear \$3,200
- NH 782 harvester, base unit, 1000 RPM. \$3,900
- Gehl 700 harvester, 6' pickup & 1R corn head.....\$2,200
- NH 900W hay head.....\$1,700
- Gehl 1560 blower, late model.....\$2,200
- IH 600 blower.....\$1,950
- NH direct cut head for 717 to 782 harvester.....\$375
- IH 56 blower.....\$1,000
- NH 30 blower.....\$550
- NH 28 blower.....\$850
- NH 892 harvester.....\$3,850

MISCELLANEOUS

- NH 304 side delivery manure spreader. \$2,250
- NH 354 grinder mixer, hyd. drive w/scales.....\$3,500
- (4) no till coulters for White 5100 corn planter.....\$450
- IH 50 stalk chopper, 12'6".....\$2,500
- IH #60 stalk chopper, 14', 1000 RPM, side transport, nice.....\$2,400
- Gehl 95 mixer hyd. drive.....\$1,200
- Tailgate for NH 680 manure spreader.....\$150