

HOOBER SPECIALS FOR JULY 16, 1994

"The Units pictured below must be sold. They have been here too long. I will sacrifice to get them sold"
Charlie Hooper

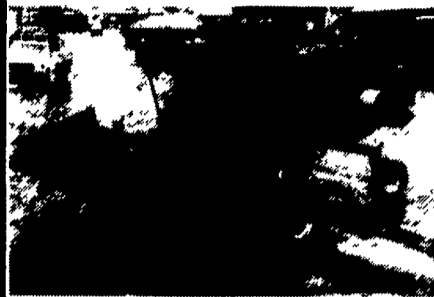


CASE IH #4 SUBSOILER

7 Shank, Automatic
Trip (G6488)

Call For A Price
We'll Sacrifice
This One!

This Subsoiler Works
In Rocks



Case IH 8830 Windrower

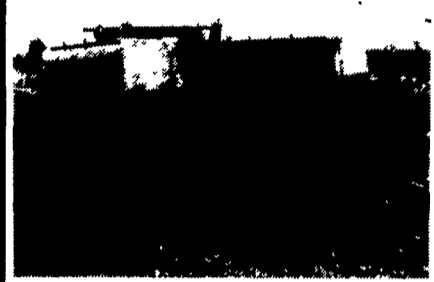
With 12 Ft.
Header, Excellent
Hay Machine
(F7843)

RENTAL MACHINE AT
A SPECIAL PRICE!



CASE IH 8430

Round Baler.
Makes 4' Wide Bales
Up To 1,000 Lbs. (6) 7"
Wide Belts Form
The Bale



Great Plains
24' Folding
Drill - 6" Spacing,
4'x12" Dual Rib
Press Wheels,
Electric Clutch
Controls Seeding...

CALL FOR A PRICE! IT MUST GO...

This Is Your Drill If You Till The
Ground Before You Plant

PRICE \$22,750

All New & Used Products
Backed By
Hooper Parts & Service

(717) 768-8231

HOOBER

C.B. HOOBER & SON INC.
INTERCOURSE, PA

Best Buys in Used Equipment

USED COMBINES

- CIH 1660, 1987, 2179 Hrs., 2WD, AHHC, GL Monitor, Reel To Ground, Feeder - Reverser (U7501)
- CIH 1660, 2 WD, Hydro, 1390 Hrs., AHHC, Rocktrap, GL Monitor, Cab w/AC, Heat, Radio (U7945)
- CIH 1660, 1987, 1800 Hrs., Chopper Feeder-Reverser, Standard Rotor, Cab w/AC, Heat, Radio (U8102)
- CIH 1660, 1991, 1300 Hrs., 2 WD, AHHC, G.L. Monitor, Straw Chopper, Specialty Rotor, 30.5x34 and 14.9x24 Tires (U8331)
- CIH 1680, 1987, 2357 Hrs., Hydro, AHHC, GL Monitor, 2WD, Cab, AC, Heat, Radio (U8533)
- CIH 1640, 1988, 1079 Hrs., 2WD, Hydro, AHHC (U7680)
- IH 1460, 1980, 3563 Hrs., 28Lx26 and 18.4x16.1 Tires, AHHC (U8232)
- IH 915 Diesel, Hydro, Cab w/Air (U7477)
- IH 1460, 1982, 2850 Hrs., Hydro Cab w/AC, Heat, Radio, AHHC, 30.5x32 & 14.9x24 (U7598)
- IH 1460, 1983, 2900 Hrs., Hydro, AHHC, GL Monitor, Cab w/Air, Heat & Radio (U8159)
- IH 915 (U8379)
- IH 1460 1980, 2077 Hrs., 30.5x32 Tires, Radio (U8444)
- IH 1460 1979, 3700 Hrs., Rebuilt Hydraulics, Engine Overhauled (U8236)
- IH 1480, 1983, 2WD, 3265 Hrs., 65.5x32 Flow Grip and 14Lx16.1 Tires, AHHC, Hyd. Reel Fore & Aft, 3rd Cylinder, Strawchopper (U8113)
- IH 1480, 1980, 4350 Hrs., 30.5x32 and 18.4x16.1 Tires, Feeder-Reverser, GL Monitor, AHHC, 3rd Cylinder (U8151)

- JD 6620, 1981, 3180 Hrs., Hydro, 28Lx26 w/215 Platform (U7343)
- JD 6600 Sidehill, 2135 Hrs., AHHC Cab w/AC, Heat, 4 Row Wide Cornhead, 216 Platform (U8347)

USED DISCS

- Bush Hog 1437 Disc (T8803)
- Krause 1924 Disc, 17" Blades (T8791)
- JD 235 Single Wing Disc 20" (T8709)
- Krause 1924 Rockflex Disc, 24", Scrapers, Blades, Front: 20" Rear: 18.5" (T8766)
- Krause 2416 Disc, Blades: Front-21" Rear-22" (T5858)
- Krause 4924 Rockflex Disc w/Mulchers (T8550)
- IH 485 Folding 21' Disc, Blades 17.5" Front & 18" Rear, Duals (T8687)
- Krause 1927 Rockflex Disc - 9" Spacing, Blades - 19.5" Front & 21" Rear, Duals (T7966)
- Krause 1577 Rockflex Disc 9" Spacing, Blades - 18" Front & 18.75" Rear (T8458)
- Krause 4926 Disc, Rockflex, w/Scrapers, 9" Spacing (T7653)
- Krause 1966 Disc, 31" Cut, "Rockflex", New 22 1/2" Notched Blades (T7234)
- IH 510 Disc, 16'10" Spacing, 22" Blades (T7542)
- IH 470 Disc 13" w/Busterbar (T8773)
- Krause 2413 Disc (T8433)

USED MOLDBOARD PLOWS

- IH 710 Plow 6-18", Auto Reset, Semi-Mounted (T6813)
- IH 720 5-18" w/Dtl. Hitch (T8769)
- IH 710 Plow, 4-18" Semi-Mounted (T7512)

USED CHISEL PLOWS

- Krause 2807 Chisel Plow w/Coulters (T8543)
- Sunflower Chisel, 16 Shank, Folding, Reversible Points; w/Spring Cushion Shank, Repointed (T7787)
- Chem Farm CPK 180 Chisel Plow, 17' Folding Hi-Clearance Spring Cushion Shanks (T7134)
- IH 55 Chisel, 10 Tooth, 10'5" Spacing, C Shank, Spring Tip (T7329)
- IH 13 Shank Chisel Plow w/Gauge Wheels & Top Link (T8122)

USED TRACTORS & UNLOADERS

- Steiger PTA 280, 1981 Automatic, Engine Done 380 Hrs. Ago 18.4x38 Duals (W8620)

130 to 200 HP

- Case 1570, 2WD, w/Cab (W8481)
- CIH 7120 MFD, 280.5 Hrs., Cab, Front Wts., Tires: 20.8R42 & 16.9R28 (W8902)
- CIH 7120 2WD, Dual Wheels w/10 Bolt Hubs (W8692)
- IH 5288, 1981, 2978 Hrs. 20.8x38 Duals, Front Wts., Cab w/AC, Heat, Radio (W8479)
- CIH 7130 MFD, 1989, 1665 Hrs., 3 Hyd. Valves, 1000 PTO, 16.9x28 and 20.8x42 Tires, Cab w/AC, Heat, Radio (W8369)
- JD 4650, 1987, 7100 Hrs., 4 WD, Tires: 20.8x38 w/Duals (W8517)
- IH 1566, 6000 Hrs., Diesel, 2WD, Cab (W8757)

80 to 130 HP

- IH F806, 7718 Hrs., Diesel, Top Link (W8751)
- IH 1086, 1980, 4391 Hrs., Diesel, 2WD, ROPS (W8588)
- IH 1086, 1977, 5539 Hrs., Diesel, 2WD, ROPS (W8589)
- Case 2290, 1979, 4058 Hrs., PS, Dual PTO, 18.4x38 Rear, Cab w/AC, Radio (W8268)
- IH 186 Hydro, 1978, 4528 Hrs., Diesel, 2WD, WFE, (W8679)
- IH 186 Hydro 1978, 4830 Hrs., 2WD, Diesel, WFE, Top Link, Cab (W8727)
- IH 966, 4000 Hrs. w/18.4x30 Tires (W8634)
- IH 186 Hydro 1977 (W8830)

Under 80 HP

- Hesston 60-66 2WD, WFE, 540 PTO, 3 Cyl., 16.9x30 Rear Tires, Canopy (W8350)

OTHER USED TILLAGE

- Krause 12 Row Folding Cultivator (T8297)
- Krause 4133 Field Cultivator 37' w/K-Tines (T6863)
- Krause 4129' Field Cultivator 30', C-Shanks, 3 Bar Tines (T8161)
- Brillion 28' X-Fold Packer, Not Ductile (T8623)
- DMI 17.5' Field Cultivator (T8374)
- JD 950 Cultimulcher, 15', New Tine Points (T7752)
- Heiniker 23' Field Cultivator, Hyd. Fold, 12' Transport, 6" Spacing, Cushioned C-Shanks (T7311)
- IH 315 Cultimulcher 14' w/Cylinders & Hoses (T7841)

USED HAY & FORAGE

- IH 600 Blower (U8214)
- JD 1508 15' Rotary Mower, 1000 PTO (V8574)
- Woods 120 Mower, 10' Offsets (U6970)
- NH 499 Haybine w/New Rolls (U7310)
- NH 499 Haybine, 12' Cut, Hydro Swing, 3" Knife w/Guards (U7899)
- Hesston 30A Bale Stacker (U8087)

USED HAY BALERS

- CIH 8580 Baler (F7581)
- CIH 8520 Baler w/Wisconsin Engine, Steel Wheels (U8849)
- JD 336 Baler w/#30 Ejector (U8669)
- NH 269 Baler w/Wisconsin Engine (U7138)
- NH 273 Baler (U7000)
- Hesston 4600 Baler (U8893)

USED PLANTERS & DRILLS

- Great Plains 14' Drill w/Comb No-Till Hitch (V8362)
- CIH 5100 Drill 24x6 w/2 Drill Hitch (V7857 & 59)
- IH 510 Drill 18x7 Excellent Cond. w/ Grass Seeder (V8546)
- JD 750 Drill, 15', No-Till, 7 1/2" Spacing, Plateless (V7640)
- IH 800 6 Row Narrow Air Planter w/ Liquid Fertilizer w/Insecticide w/1000 Shaft Pump, (V7874)
- Great Plains 14' Drill, No-Till, 7" Spacing w/Wt. Brackets, No-Till Hitch (V7978)
- Great Plains 14' Drill, No-Till, 2x13 Press Wheels, Acrometer 7" D.D. (V8177)

All New & Used Products
Backed By Hooper
Parts & Service

(717) 768-8231

HOOBER

C.B. HOOBER & SON INC.
INTERCOURSE, PA

case

case