

Vermeer 605-H Baler
Like New
(717) 733-4516

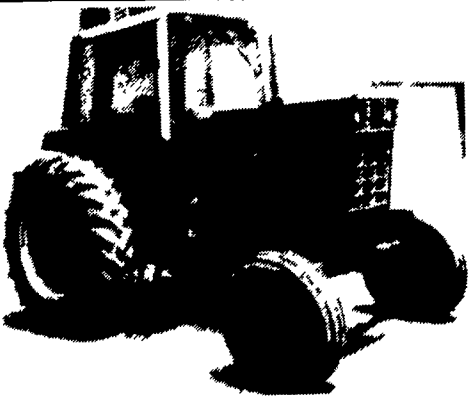
- IH hydro 70, rebuilt engine & hydro, good rubber.....\$10,500
- IH 404, 1700 original hours.....\$4,250
- IH 460 utility.....\$4,250
- IH 1486, cab & air, new TA & clutch & paint, w/duals. \$17,900
- NH 1066, cab & air, new rubber.....\$12,500
- 16' hydraulic dump bale wagon w/8 ton running gear...\$2,000
- IH 706.....\$5,500
- (4) year round cabs.....\$500 - \$1,500
- IH 786 w/roll bar, new TA & clutch, excellent condition.....\$11,500

Financing Available
717-776-5291
JEFF SHOWAKER

Clean off-the-farm, field test tractors
Most Reconditioned And
Sold With Warranty
Positively no out-of-state
Personal checks

Madey Farms
Windber, PA (814)467-8839

- IH 5488 C/A 2800 hrs.....\$23,500
- IH 1586, cab & air, 1981.....\$8,900
- IH 1466 C/A, Rebuilt Eng dual PTO,TA,20.8 radials
- IH 1066 Cab & Air, rebuilt engine
- Case 2590 w/Cab & rebuilt Engine.....\$16,500
- Case 2290 Cab, Air.....\$12,900
- Case 1070 fender tractor.....\$6,800
- Case 1030 diesel.....\$4,800
- MF 2775 C&A.....\$10,500
- Case 380 dsl., cab, ldr, 3 pt & PTO, 48 hp



IH 1086, '81 Model, Cab, Good
Rubber, Dual PTO
\$10,500
(717) 532-8926

JD 343 Corn
Head...\$2,200

JD 213 Grain
Table..\$550

Call
Kenny Roberts
(610) 255-4050

Take Exit 20B
Off Of 83, 5/4 MI. West
To Belmont Farm.

JD 510
Runs Excellent
\$8,800
410-833-9091

WATSON

IRRIGATION

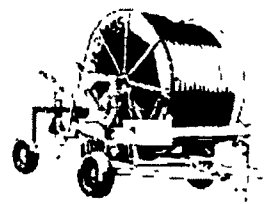
PUMPS



Diesel - Electric - PTO -
Gas - Propane - Submersible
We have a pump to meet your needs.

Gorman-Rupp - Berkeley -
Cornell - Caprari - and more.

TRAVELERS



Reels from 10 - 1000 GPM
Agriculture - Athletic fields -
Turf farms - Large yards

Hobbs - Kifco (Ag-Rain)

Buy American made quality reels

5301 E. Trindle Rd., Mechanicsburg, PA 17055 (717) 796-1630

Toll Free 800-999-1630

Martin Tractor

866 Greenspring Rd.
Newville, PA 17241

Used Tractors

• JD 3020 \$6,000 • AC 7000 \$6,500 • JD 3020, side console, \$8,200

Used Tractor Parts

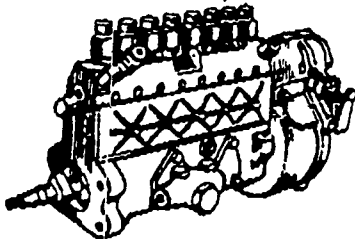
Most Makes and Models Have Large Selection
Recent Arrivals: Case 530, JD 4000; JD 2030; JD 2840, IH 966, IH 706, Oliver 1600; Oliver 770; Ford 5000; Ford Dexter Dsl, JD B; Oliver 55; Case 530 White 2-150, Case 530, Case 530, IH 560; JD 60; Oliver 1650, Case 530,

JD 48 loader \$2,500
IH 2050 loader \$2,000

New rear
tractor rims
18x38 and
other

Call (717) 776-7542
for detailed information
MON-FRI 8-5 SAT 8-12
No Sunday Calls Will Ship UPS
No Out-Of-State Personal Checks

Diesel Injection Pumps



Ambac
Bosch
Bryce
CAV
Cummins
Diesel Kiki
Minimec
Nippon Denso
Roosa Master
Roto Diesel
Simms
Stanadyne
United Tech
Yanmar
Zexel

Don't Gamble The Heart Of Your Engine On
An Unauthorized Shop. We Have What It Takes
To Do The Job Right!

- Technical Expertise
- Experience (40+ years)
- Advanced Computerized Equipment
- Current Specifications
- Factory Training
- Factory Warranty Service
- Original Parts
- Custom & Standard Rebuilding

Free Injector Check With Each Pump Rebuild.
We Will Honor Other Suppliers Coupons.
All Makes Serviced

Penn Diesel Service Co.
Interstate 81, Exit 27
Harrisburg, PA 17112

(717) 545-4207 (800) 535-2913

KEITER'S FARM MACHINERY

Halifax, PA 17032
(25 miles North of HBG)
717-362-9096

HAY EQUIP.

Ford 3pt., belt driven mower
JD 336 baler w/Bale Chute
IH 720-830 grass head
NH 54A bale thrower, very nice
NH 477. 7' haybine, nice
NH 495, 12' haybine, rolls like new
JD 24T baler w/chute, field ready

MISC.

JD 2R cultivator, 620 to 730
IH 1150 grinder mixer, nice

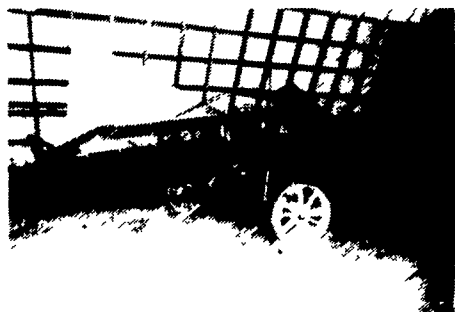
BALERS, HAYBINES & HARVESTERS FOR PARTS
WE SHIP U P S

The I & J Cultivator



Great For
The Grazing
Areas

MOWERS: 3 point or trailing features: guards &
blade, move back and forth cuts like a scissors,
virtually no plugging



CORN BINDER; Features tandem axle on left side:
aluminum loader with belt & slats (no chains),
interlocking bottom, gathering chains (positive
gripping), carbide cutting chain, hydraulic drive (no
PTO, belts, or pulleys).

I & J MANUFACTURING

DEPT. LF, 5302 Amish Road • Gap, PA 17527

717-442-9451

(Call Between 8:45-9:00 A.M. Weekday Ask For Jake)

Best Buys in Used Equipment

COMBINES & HEADS

- IH 84 SOLD Corn Head
- 1994 Case IH 1644 Axial Flow DEMO w/15' 1020 Head, 190 Hours
- 1992 Case IH 1640 Axial Flow w/15' 1020 Head, 475 Hours
- 1991 Case IH 1640 Axial Flow w/15' 1020 Head, 1000 Hours
- 1991 Case IH 1660 Axial Flow w/16 1/2' 1020 Head, 1054 Hours
- 1990 Case IH 1660 Axial Flow w/15' 1020 Head, 1277 Hours
- 1982 Massey 850 w/18' Head w/U 2 Reel, 3400 Hours

TRACTORS

Case 830 Gas Tractor Case-O-Matic Transmission

MISCELLANEOUS

- Cub Cadet 1610 Lawn Tractor w/44" Deck
- Ford 951 6' 3 Pt. Rotary Mower
- Moore Rain Irrigation Pipe, 5"x40' w/Couplings, Tees, Elbows, & Plugs
- Kubota T1400 Lawn Tractor w/42" Deck & Bagger
- White 2-44 FL Forklift
- Cub Cadet 518 Rider w/36" Deck
- IH 475 Disc Harrow, 13'x10" Wide
- IH 485, 19' Hyd. Fold Disc Harrow
- JD 7b On-Land Plow
- Case IH 5717 Chisel Plow, 17'
- Lely- Roterra, 8'
- IH 4 Bottom Rollover Plow, 16"
- Bauer Pump Unit w/Deutz F5L413FR-500/600 GPM @ 170 PSI
- Farm-Hand Dump Wagon
- Ford Chisel Plow, 10'
- White 6b Semi-Mounted Plow
- Unverferth Header Cart
- Brittania Boom Sprayer

HAY & FORAGE

- NH 271 Square Baler
- NH 268 Square Baler
- NH 680 Manure Spreader
- NH 488 Haybine
- NH 1495 Self-Propelled Haybine
- IH 440 Sq. Baler
- NH SOLD Haybine
- NH 479 Haybine
- Ford Square Baler

Farm-Rite inc.

Agricultural Equipment, Supplies & Services
SHILOH, N.J.

1-800-752-6373



TRACTOR REPAIRS

- We Have Experienced Ford Tractor Mechanics That Specialize In Ford Tractor Repairs -
- We Specialize In Ford Tractors And Have Since 1921
- Call For Quotes

717-949-2000



KELLER BROS.

RD 7 Box 405
LEBANON, PA