

# FARMER BOY AG INC.

Your Complete Poultry & Swine Building & Equipment Center

## FANS FANS FANS 36" & 48" Keep Cool With

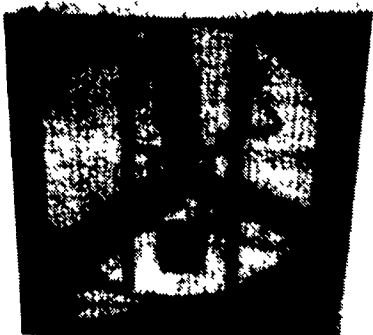


BELT DRIVE OR  
DIRECT DRIVE PANEL FANS  
FOR AGRICULTURE  
Guaranteed Lowest Price

**PROPELLER**  
All galvanized blades riveted to matching heavy gauge galvanized spider. High performance camber twist propeller, stabilizes air flow through lower speeds.

**FAN STRUCTURE**

- All galvanized frame and orifice - corrosion resistant, long lasting



A Division of **GSI**

### AAA GLASS-PAC FIBERGLASS VENTILATION FANS

Streamlined Fiberglass Fan Housing

- Plastic Shutter
- Solid One-Piece Fiberglass Propellers
- Heavy Duty Motors
- All Aluminum Motor Unit
- Stainless Steel Hardware
- Vinyl-Coated Steel Front Guard



### AAA NEVER-RUST AIR FOIL SHUTTERS

NO RUST,  
NO CORROSION

AVAILABLE IN BACK-DRAFT MODEL



Thermostat Has A Sealed Molded Plastic Case With All Exposed Metal Parts Of Stainless Steel, Intended For Applications That Need A Rugged Weatherproof Type Control Suitable For Either Heating Control Or Cooling Control

### TANDEM PRODUCTS, INC. LIVESTOCK EQUIPMENT



### Tenderfoot/NS Flooring

## UNIVERSAL CONTROLLER



UCS04B  
Droplet Emitter

UCS23  
360° Sprinkler

- Simple and Automatic Control of Water Flow
- Dependable Solid State Circuitry
- Ideal Control For Livestock and Poultry Cooling Systems
- Line Filter and Protective Check Valve Included

UCS05  
Meter

UCS04  
180° Sprinkler

## SEE US FOR YOUR REMODELING NEEDS

Compare the difference!

### SCHAFFER Barn Cooler

The only patented air circulation fan on the market!  
Because of its design, it provides more air movement and therefore more cooling effect than any other circulation fan.



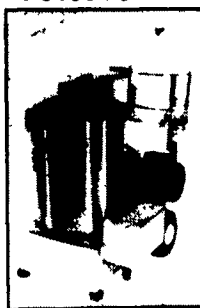
(#V520-6000 c.f.m., #V524-8500 c.f.m.)

U.S. Pat #4,819,183

## AQUA BLAST



### ELECTRIC COLD P3160EC

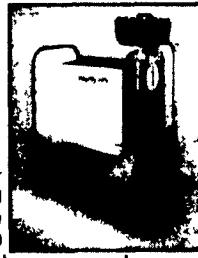


GAS  
HOT

P4230EHLF

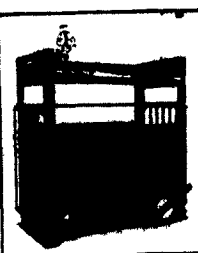
### RayTec WayPig LITTER SCALES

All Four Wheels Swivel  
An entire liter can be placed in the portable WayPig at one time, as the scale handles loads up to 200 lbs. The oversize scale quickly gives you clear, precise readout of the total litter weight in both pounds and kilograms. The compact design lets you easily glide through narrow aisles and around tight corners.



### WayPig 500 Animal Scales

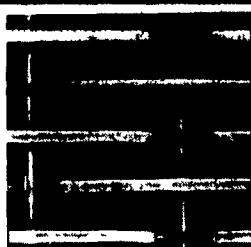
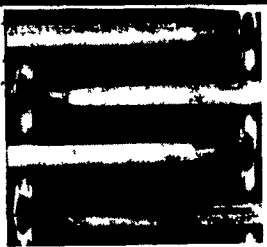
The bottom platform has non-skid surface with no gaps on the side through which feet can slip. The entire unit including sides and gates, serve as the weighing area. WayPig 500 & 505-scales can be ordered with wheels that can be quickly raised for level weighing. WayPig 505 - 20"Wx60"Lx41-1/4"H



### BOSS HOG FLOORING

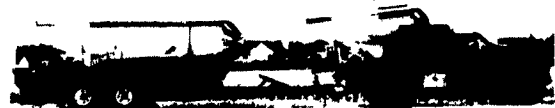
FLOORING FOR ALL CONFINEMENT NEEDS

- "New" Size 3/8"x3" - 5/16" Wire In Stock
- 3/8"x2 - 5/16" Wire
- 3/8"x1 1/2" - 243" Wire



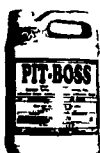
### QUALITY GSI BINS

We Assemble, Deliver & Set-Up Bins On Your Farm



### PIT-BOSS

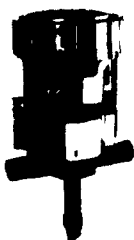
Pit Additive To Reduce Pit Odor And Pit Solids



### DOSATRON LIQUID DISPENSER

Accurately Meter... Antibiotics • Cocciostats • Drugs • Disinfectants • Sulfas • Vaccines • Wormers • Vitamins • Fertilizers • Chemical Additives... Into Livestock and poultry drinking water or into irrigating systems.

**7 GPM MODEL**  
Adjustable ratios: 1:100, 1:125, 1:200  
Dosatron 7 GPM Technical Specifications:  
Adjustable Ratios: 1:100, 1:125, 1:200  
Minimum Flow: 13 GPH  
Maximum Flow: 400 GPH  
Min. Oper. Pressure: 7 PSI  
Max. Oper. Pressure: 72 PSI  
Connections: 1/2" NPT  
Dimensions: Height 11" Width 8" Weight: 3.5 lbs.



### RENCO PREG-TONE II

Introducing The New PREGNANCY TESTER NEW-Louder Tone!



SAFE All testing done externally. No harm to sow or litter!

FAST Test completed in seconds! Confirm pregnant or open in less than 30 seconds! (At 30 days)

ACCURATE Accuracy proven by many thousands of producers!

### BEEF/DAIRY

CAPACITY	100 lbs.
GALLONS	10
SPECIFIC	1.0
DIMENSIONS	24" x 18" x 12"
WEIGHT	15 lbs.

### MODEL #3410

CAPACITY	100 lbs.
GALLONS	10
SPECIFIC	1.0
DIMENSIONS	24" x 18" x 12"
WEIGHT	15 lbs.

### MiraFount

ENERGY FREE WATERERS THE PROVEN ENERGY FREE SYSTEM

### BEEF/DAIRY

CAPACITY	100 lbs.
GALLONS	10
SPECIFIC	1.0
DIMENSIONS	24" x 18" x 12"
WEIGHT	15 lbs.

### MODEL #3360

CAPACITY	100 lbs.
GALLONS	10
SPECIFIC	1.0
DIMENSIONS	24" x 18" x 12"
WEIGHT	15 lbs.

### MODEL #3310-S Hogs

CAPACITY	100 lbs.
GALLONS	10
SPECIFIC	1.0
DIMENSIONS	24" x 18" x 12"
WEIGHT	15 lbs.

## ANIMAL HOUSING EXPO



July 12-13, 1994  
Lebanon Fairgrounds  
Lebanon, Pa.

A show for Northeast livestock, dairy and poultry producers

### PENNSYLVANIA



College of Agricultural Sciences  
Cooperative Extension

Full Line Of Parts In Stock For Your Poultry And Hog Needs

Hours: M-F 7:00-5:00;  
Sat. 7:30-11:30

Swine & Poultry Systems Specialists

## FARMER BOY AG. INC.

410 E LINCOLN AVE (RT 422)

MYERSTOWN, PA 17067

PH. 717-866-7565

7-9

Check Our Warehouse Prices



WE SHIP UPS



SEE PAUL, JAY, OR STEVE FOR YOUR PARTS AND EQUIPMENT NEEDS