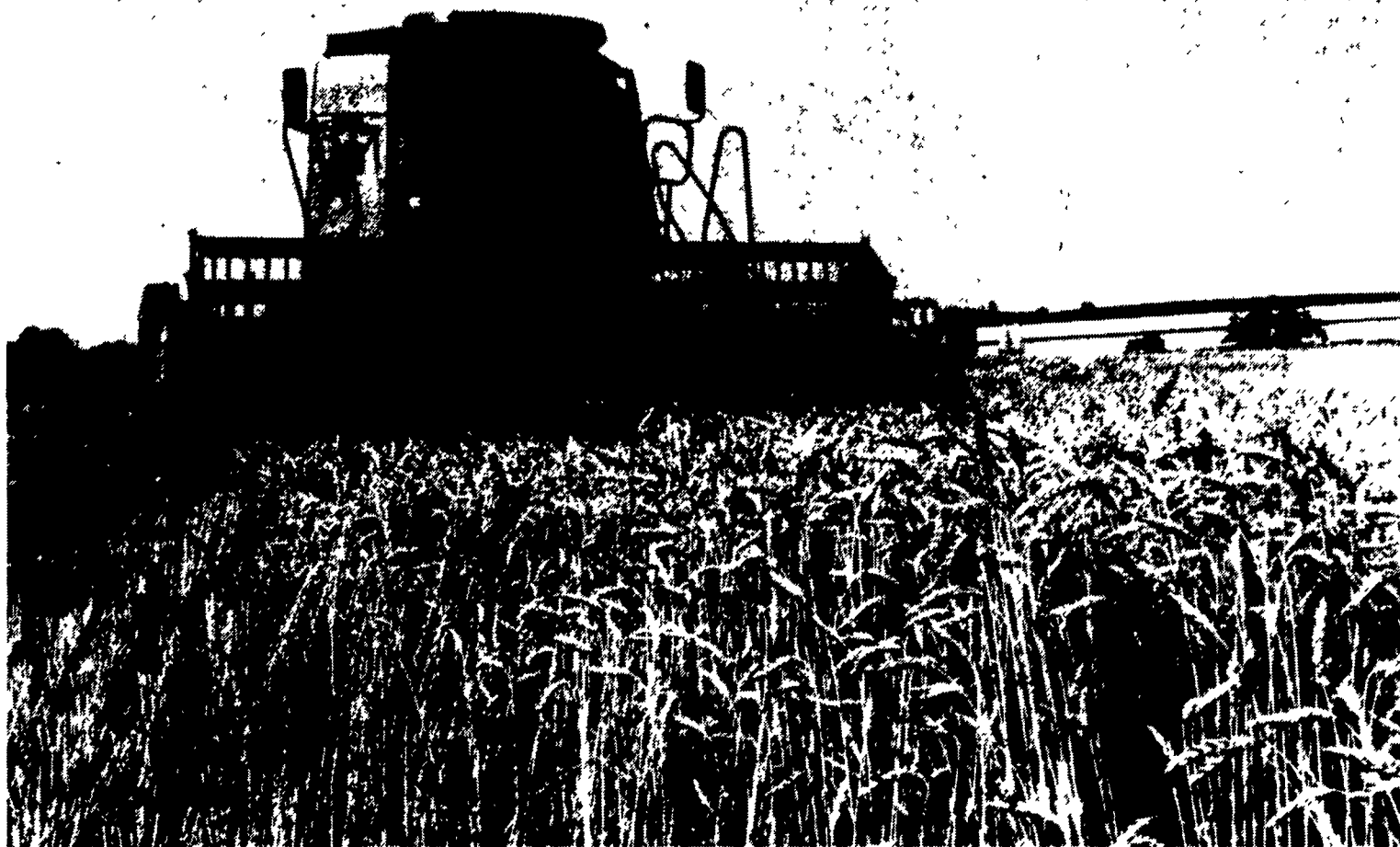


...Modern Method Mechanical

(Continued from Page A1)



Doug Rohrer, with John Harnish riding along, works the combine that looks like a monster ready to devour the wheat and the camera. This photo was taken off south Lampeter Road, looking toward Rohrer's farm buildings along Bridge Road.

According to farm reports, most of Pennsylvania's barley is harvested, and wheat harvest is well underway. Oat conditions are generally good to excellent, but short stems are common, according to the the state crop and weather report. Corn growth is reported higher than normal on the average, but many areas are still looking for much needed rains at this time. Where moisture is adequate, the third cutting alfalfa is starting to sprout. But haymaking conditions and regrowth are quite variable across the state.

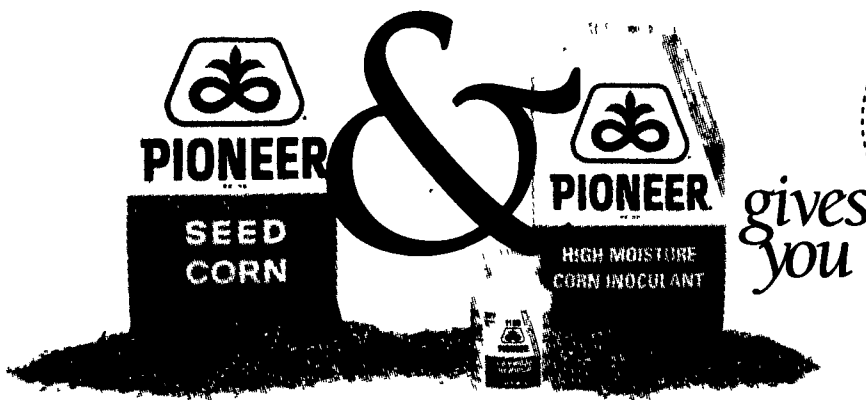
Extreme heat had reduced herbicide effectiveness in many areas. Pasture conditions were variable. Some farmers reported excessively wet pastures. Heat-stressed livestock and reduced milk production were common concerns. *Photos by Everett Newswanger, managing editor.*

Lowest SCC Lancaster DHIA Herds For June

The 50 lowest rolling SCC herds in Lancaster DHIA as of the month of June are as follows:

NAME	TOWN	BRD	RBA SCC	NO. COWS
NIKE S ZOOK	HONEY BROOK	B	42	6
CURTIS E AKERS & SON	QUARRYVILLE	H	127	55
GARY & JENNY BOWMAN	NOTTINGHAM	H	134	49
CLAY FARM	LITITZ	H	145	58
J. KENNETH GROFF	LEOLA	H	147	48
GALEN C MARTIN	HONEY BROOK	H	152	46
STEPHEN F STOLTZFUS	CHRISTIANA	H	152	51
DAVID R STOLTZFUS	MARVON	H	153	37
TIMOTHY L WEAVER	STEVENS	H	154	57
ROB-BONNIE WENTWORTH	QUARRYVILLE	A	154	51
ELMER E KAUFFMAN	CHRISTIANA	H	155	42
BO JOY FARM	QUARRYVILLE	B	156	42
NIKE S ZOOK	HONEY BROOK	A	157	43
HILLSSIDE ACRES				
BO JOY FARM				
CARL&DARLENE EBERLY				
DANIEL B ZOOK JR				
BURNELL W MOLT				
ABNER S. KING				
EARL & ANNA MAE REIFF				
DONALD B TRIMBLE				
STEVIE Z GLICK				
JOHN R STOLTZFUS				
IRA N HEISTAND JR				
STAR POINT DAIRY				
NORMAN H MOLT				
ART & BOB NELLINGER				
FLOWING SPRING FARM				
ROY E SENSENIG				
ABRAHAM SHELLY JR				
CHRIST E STOLTZFUS				
MEADOW VISTA FARM				
REINHOLDS	H	162	32	
QUARRYVILLE	Y	163	28	
SINKING SPRING	H	163	71	
GORDONVILLE	H	166	34	
PEACH BOTTOM	H	169	68	
TALNAGE	H	169	34	
EPHRATA	H	170	40	
PEACH BOTTOM	B	173	56	
GORDONVILLE	H	173	43	
MARVON	H	175	37	
ELIZABETHTOWN	H	176	57	
QUARRYVILLE	H	177	29	
LEOLA	H	177	31	
STRASBURG	H	178	124	
DRUMORE	H	179	45	
NOTTINGHAM	H	180	73	
MANHEIM	H	181	37	
QUARRYVILLE	H	182	36	
BAINBRIDGE	H	183	166	
LUTHER R PATCHES				
NOSE L GLICK				
LEONARD J STOLTZFUS				
BREEZYVIEW JERSEYS				
EARL N LANDIS				
ROBERT L SHELLY				
GLENN F SHENK				
LEE NONE FARM				
GORDON E HERR				
DAVID R WENGER				
WARREN A SCHMUCK				
AMOS E STOLTZFUS				
MAR NULLDALE FARM				
ANNON E REIFF				
GORDON & CAROLE HOOVER				
LEONARD R * MARIAN MOLT				
TIMOTHY KURTZ				
WELK ACRES FARM				
MANHEIM	H	184	45	
PARADISE	H	186	37	
GAP	H	190	59	
LANCASTER	J	193	21	
MANHEIM	H	195	52	
MANHEIM	H	196	57	
LITITZ	H	197	125	
GORDONVILLE	H	200	33	
NOTTINGHAM	H	201	86	
MANHEIM	H	202	48	
PEACH BOTTOM	A	203	65	
HONEYBROOK	H	205	59	
QUARRYVILLE	H	206	135	
LITITZ	H	206	39	
GAP	H	207	110	
MARVON	H	208	65	
ELVERSON	H	210	89	
QUARRYVILLE	H	211	84	

A LESSON WELL LEARNED... LANCASTER FARMING'S CLASSIFIED ADS GET RESULTS!



153 lbs. more milk per ton of high moisture corn fed

Make Better High Moisture Corn

You know planting PIONEER® brand Seed Corn yields more bushels of quality high moisture corn. But what a difference Pioneer inoculants make. Tests prove inoculating with 1189 significantly improves feeding value. Use the inoculant that is tested most. Genuine PIONEER® brand High Moisture Corn Inoculant.

Call 1-800-247-6782 for copy of trial data



PIONEER HI-BRED INTERNATIONAL, INC.

ISO 9000 Quality Certification
Pioneer inoculants the only inoculants produced by quality systems which meet the rigid standards of ISO 9000 Certification

Natchez Animal Supply
Low Prices
Eqvalan Horse Wormer (ivermectin paste 1.87%) \$9.19 per Tube
• VACCINE • ANTIBIOTICS
• WORMERS • VITAMINS
• INSECTICIDES
PRODUCTS FOR CATTLE...DOG...CAT...HORSE...SWINE
★ Request ★
New Catalog
P O Box 1528V - Natchez, MS 39121
1-800-647-6780
2nd Day and next day air available