

Philadelphia Potato & Onion

Philadelphia, Pa.

Wednesday, July 6, 1994

ONIONS AND POTATOES
 ONIONS DRY: MARKET ABOUT STEADY US#1 OR GENERALLY GOOD QUAL AND COND UNLESS OTHERWISE STATED. Yellow Granex GA 50 lb ctns jbo few 28.00 NEW CROP Yellow Grano Type CA 50 lb sks jbo 9.00-10.00 rpk sz 9.00-10.00 NM 50 lb sks jbo 8.50-10.00 mostly 9.00-10.00 rpk sz 8.50-9.00 White NM 50 lb sks jbo 14.00-16.00 Red CA 25 lb sks jbo 7.00-8.00 med 6.50 TX 25 lb sks jbo 9.00 med 7.00 ---POTATOES: MARKET ROUND WHITE SLIGHTLY LOWER, OTHERS ABOUT STEADY US#1 SZ A WASHED OR BRUSHED UNLESS OTHERWISE STATED Russet Burbank ID bld 10 5-lb flmbgs non sz A 7.50-8.00 50 lb ctns 70s 18.00-20.00 80s 17.00-20.00 mostly 18.00 90s 13.00-14.50 mostly 13.00-14.00 few 15.00 100s 10.00-11.00 mostly 10.00-10.50 few 11.50 Norkotah CO 50 lb ctns 80s 17.00 90s 11.50-12.00 100s 9.50 NEW CROP Russet Norkotah CA 50 lb ctns 80s 19.00 90s 13.00 100s 10.00 Round Red AL 50 lb ctns sz B 18.00-20.00 50 lb sks 10.00-12.00 AZ 50 lb ctns 13.00 sz B 18.00-21.00 NC 50 lb sks 10.00 sz B 18.00-20.00 TX 50 lb ctns 11.00 Round White NC 50 lb sks 7.00-7.50

lge 9.00-10.00 NJ 50 lb sks 7.50-7.75 sz B 4.50 VA 50 lb sks 7.00-8.00 mostly 7.50 lge 9.50-10.00 Long White CA 50 lb ctns 13.00-15.00 creamers 20.00.

Southern Maryland Regional Farmers' Market

P.O. Box 144, Cheltenham, Md. 20623

June 30, 1994

BEANS: GREEN 10.50-15.00 BU., 12.00-13.00 1/4 BU.
 BROCCOLI: 3.00.
 CABBAGE: WHITE 5.50-8.00 1/4 BU., OTHER 2.75-5.50.
 CUCUMBERS: MED. 13.00-15.00 1 1/9 BU., LARGE 13.50 1 1/9 BU., OTHER 5.00-10.00; SML. 7.50-11.50 1/4 BU., MED. 9.00 1/4 BU., LARGE 5.50-6.00 1/4 BU.
 SPRING ONIONS: .55 BUNCH.
 PEPPERS: HOT BANANA 6.00 1/4 BU.
 POTATOES: RED 8.50 1/4 BU.
 SQUASH: PATTYPAN 3.50-6.00 1/4 BU., YELLOW STRAIGHTNECK .50-3.50 1/4 BU., GREEN ZUCCHINI 3.25-5.75 1/4 BU., SUMMER .50-2.50.
 TOMATOES: SMALL 6.50-8.00 25 LB. BOX, LARGE 11.00-17.00 25 LBS., CHERRY 4.50-6.00 8 QT. FLAT, OTHER SIZES .50-11.50 25 LBS.
 BLACKBERRIES: 1.25 PINT.
 PEACHES: SMALL 6.50-8.50 1/4 BU.
 PERENNIAL: 1 GAL. CONTAINER .20.
 NEXT SALE THURS., JULY 7, 7 P.M.

Frederick Livestock Auction

Frederick, Md.

July 4, 1994

Report Supplied by Auction

SLAUGHTER COWS: 61 HEAD, 1.00 LOWER. UTILITY 43.00-46.50; CANNERS 39.00-43.00; SHELLY 39.00 DOWN.
 BULLS: YG#2 1200 LBS. TO 56.50. STEERS: SEL HOL TO 49.25.
 VEAL CALVES: 183 HEAD. CHOICE, NONE; CULLS 85-110 LBS. 53.00-65.00, FEW TO 68.00; 50-80 LBS. 45.00-55.00.
 FARM CALVES: HOLSTEIN BULLS 10.00 HIGHER. #1 95-120 LBS. 140.00-165.00; 80-90 LBS. 90.00-125.00; HOLSTEIN HEIFERS 90-120 LBS. 150.00-182.00; 75-85 LBS. 90.00-140.00; BEEF X BULLS AND HEIFERS TO 115.00.
 BUTCHER HOGS: 55 HEAD, STEADY PRICES. US#1&3 215-260 LBS. 42.00-42.75; 12 HEAD 190-215 LBS. 40.00-40.75; FEW 300 LBS. TO 34.25.
 SOWS: 1 625 LB. AT 32.75.
 STOCK CATTLE: STEERS FEW 250-350 LBS. 75.00-84.00. HEIFERS: HOL 170-225 LBS. TO 95.00.
 GOATS: LARGE TO 64.00; MEDIUM TO 43.00; SMALL 10.00-27.00.

PIGS AND SHOATS: NONE.
 HATFIELD QUALITY MEATS WEIGHT AND GRADE PROGRAM. .44.00 PLUS BONUS ON QUALITY HOGS. BUYING STATION IS HELD EVERY TUESDAY AT FOUR STATES.

Carlisle Livestock Market

Carlisle, Pa.

Tuesday, July 5, 1994

Report Supplied by Auction

SLAUGHTER: STEERS SELECT AND CHOICE 60.00-61.50; HOLSTEINS 1100-1600 LBS. SELECT AND CHOICE 52.75-56.50; HEIFERS, HOLSTEINS 50.00-54.50; SLAUGHTER COWS BREAKING UTILITY AND COMMERCIAL 45.25-47.75; CUTTER AND BONING UTILITY 44.00-47.50; CANNER AND LOW CUTTER 38.00-43.50; BIG MIDDLE 40.00-44.75; SHELLY 37.50 DOWN.
 FEEDER CATTLE: STEERS 200-400 LBS. 85.00-97.50; HOLSTEINS 200-400 LBS. 69.00-76.00; 450-650 LBS. 77.00-81.00; HEIFERS 200-400 LBS. 88.00-93.00; HOLSTEINS 200-500 LBS. 100.00-152.50, 550-750 LBS. 54.00-66.00; BULLS 200-400 LBS. 75.00-87.50.

CALVES: VEALERS STANDARD AND GOOD 50-110 LBS. 60.00-100.00; CALVES RETURNING TO THE FARM, STRONG DEMAND! HOLSTEIN BULLS #1 95-125 LBS. 160.00-180.00, #2 95-130 LBS. 127.50-155.00; HOLSTEIN HEIFERS #1 75-120 LBS. 180.00-200.00; BEEF X BULLS 110-120 LBS. 150.00-165.00; BEEF X HEIFERS 100-115 LBS. 110.00-130.00.

SWINE: HOGS US#1-3 220-270 LBS. 41.25-42.50, UNDER 210 LBS. 39.00-41.00; SOWS US#1-3 330-400 LBS 31.50-33.00; BOARS 24.50-28.25; FEEDER PIGS BY THE HEAD 15-25 LBS. 16.00-23.00, 40-60 LBS. 32.00-36.00.

GOATS: BY THE HEAD, MEDIUM 67.50-79.00; SMALL KIDS 23.00-32.00. LAMBS: GOOD AND CHOICE 65-110 LBS. 53.00-64.00.

SHEEP: ALL WEIGHTS, 30.00-36.00.

NEXT STATE GRADED FEEDER PIG SALE FRIDAY, JULY 8, 1:30 P.M. SALE EVERY TUES., LIVESTOCK 7 P.M., PRODUCE, RABBITS, POULTRY AND EGGS 4 P.M. SALE 5:55 P.M.

TUES., JULY 5, 1994, DIRECT HOG BASE .44 PER LB.

STOCKING DEALER OF SUNFILM BALE WRAP

SUNFILM BALE WRAP is a reflective white film which adheres and stretches around round bales of silage creating an air-tight tension seal for 12 months of outdoor storage and fermentation. This is a good quality film and has been used by farmers for many years. USA MADE



20" x 6000'\$60.00
 Full skid (24 rolls).....\$58.00
 30" x 5000\$73.00
 Full skid (21 rolls).....\$69.00

RAIN-FLO IRRIGATION

884 CENTER CHURCH RD • EAST EARL, PA 17519
 PH (717) 445-6976

NOW OPEN!
 All produce farmers and buyers welcome

Fruits Vegetables

Cumberland Valley Produce Auction 101 Springfield Rd. Shippensburg, Pa. 17257

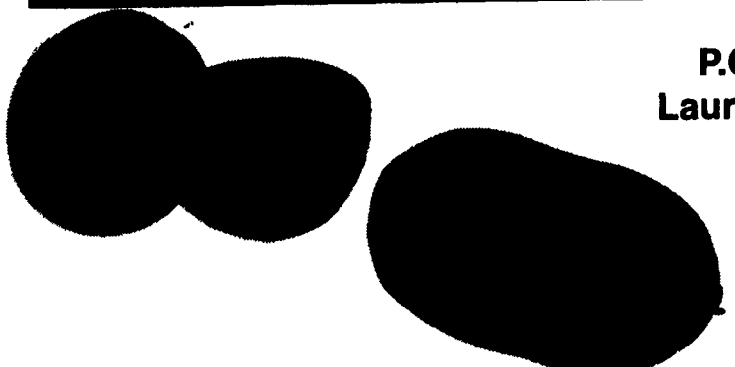
Rt. 11 North of Shippensburg to Koser Rd. left 1/2 mi.
 Sale days: Mon.-Tue-Thurs.-Fri. at 10:00 A.M.

Manager Delmar Martin
 Office (717) 530-5007
 Home (717) 762-4982

NOW OPEN FOR OUR 54th SEASON

LAUREL FARMERS AUCTION MARKET

P.O. Box 633
 Laurel, DE 19956



Marketing Fresh Produce Through Mid-September
 Watermelons, Cantaloupes, Sugar Babies, Tomatoes and More

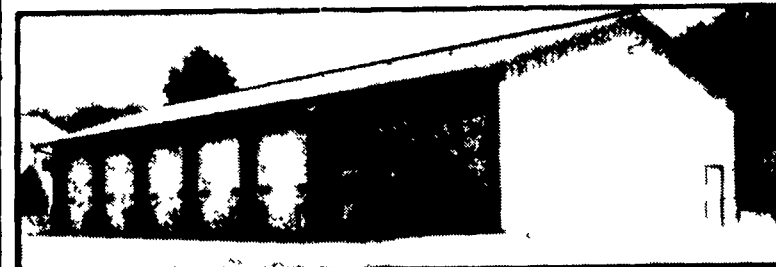
Opening July 12 9 AM

"No buyer too big or small- Pickup loads to tractor trailer loads sold- Buy your own - No fee for buying No broker needed"

Please call for more information
302-875-3147 302-875-5136

MORTON BUILDINGS Since 1903

- Horse Barns
- Riding Arenas
- Garages
- Warehouses
- Offices
- Shops
- Equipment Storage
- Aircraft Hangars



MORTON BUILDINGS, INC.

Excellence — Since 1903

CONTACT:

3368 York Rd.
 Gettysburg,
 PA 17325
 717/624-3331

P.O. Box 126,
 Phillipsburg,
 NJ 08865
 908/454-7900

Call or write today for more information

1-800-447-7436

Illinois only, call 1-800-426-6686