

Cumberland Valley Produce
 (717)530-5007
 Koser Road, Shippensburg
 June 30, July 1, 4 and 5
 Report Supplied by Auction

RED BEETS: 2.00-8.00 ¼ BU.
 GREEN BEANS: 6.50-18.50 ¼ BU.,
 YELLOW 5.00-15.50 ¼ BU.
 CABBAGE: .25-.79 HEAD.
 CAULIFLOWER: .50 HEAD.
 CUCUMBERS: 3.00-8.00 ¼ BU.
 PEAS: SUGAR 6.50-13.50 10 LB.

BOX; HULLED 3.00-6.25 10 LB. BAG.
 PEPPERS: 3.75-4.00 1 1/9 BU.
 POTATOES: WHITE 5.50-7.00 ¼ BU.,
 2.50 50 LB. BAG.
 SWEET CORN: 1.90-2.80 DOZ.
 TOMATOES: 3.50-12.25 25 LB. BOX,
 LOCAL 19.00 25 LB. BOX.

Lancaster Farming, Saturday, July 9, 1994-A15

ONIONS: VIDALIA 2.00-2.75 ¼ BU.
 ZUCCHINI: GREEN 1.00-4.25 ¼ BU.,
 YELLOW .50-1.00 ¼ BU.
 APPLES: GOLDEN DELICIOUS 1.75
 ¼ BU.
 APRICOTS: 8.00-12.30 8 QT. FLAT.
 BLUEBERRIES: 12.50-18.00 12 PINT
 FLAT.
 CANTALOPES: .55-1.00 EACH.
 CHERRIES: SWEET 7.00-15.00 8 QT.
 FLAT; SOUR 5.00-8.00 8 QT. FLAT.
 GRAPES: RED 2.00 BOX.
 PEACHES: 5.00-6.50 ¼ BU.
 CARTON.
 RASPBERRIES: BLACK 14.00-21.75 8
 QT. FLAT.
 WATERMELON: 1.80-3.10 EACH.
 VEGETABLE PLANTS: .10 FLAT.
 POTTED FLOWERS: .15-.30 EACH.
 HANGING BASKETS: 1.00-3.00
 EACH.
 MIXED FLOWERS: 1.00-5.00 FLAT.
 PLANTERS: 4.50-7.00 EACH.
 NEXT WEEK'S SALE DAYS ARE
 MON., TUES., THURS., AND FRI. AT 10
 A.M.

BEANS: GREEN AND YELLOW
 10.00-18.00 15 LBS.
 BEETS: 6.00-7.50 ¼ BU.
 BLUEBERRIES: 15.00-21.00 12 PINT
 FLAT.
 CANTALOPES: MEDIUM & LGE.
 .75-1.65 EACH.
 CHERRIES: SWEET 10.00-14.00 8 QT.
 FLAT, SOUR 7.00-8.00 8 QT. FLAT,
 WHITE 8.00-10.00 8 QT. FLAT.
 CUCUMBERS: BURPLESS 6.00-8.00
 ¼ BU., TRADITIONAL 7.00-9.00 ¼ BU.
 NECTARINES: 11.00-14.00 ¼ BU.
 SPRING ONIONS: 5.00-8.00 25
 BUNCH ¼ BU.
 PEACHES: 7.00-11.00 ¼ BU.
 PEAS: HULL 8.00-16.00 ¼ BU.
 PICKLES: SMALL 7.00-11.00 ¼ BU.,
 MEDIUM AND LARGE 2.75-7.00 ¼ BU.
 POTATOES: NEW RED AND WHITE
 SMALL 6.00-9.00 ¼ BU., LARGE
 4.00-7.00 ¼ BU., 7.00-8.00 50 LBS. #1,
 UNCLASSIFIED 2.75-4.00 50 LBS.
 RASPBERRIES: BLACK 15.00-20.00
 12 PINTS, RED 12.00-16.00 12 PINTS.
 SQUASH: PATTYPAN 3.00-5.00 ¼
 BU.
 STRAWBERRIES: 12.00-18.00 8 QT.
 FLAT.
 SWEET CORN: 2.20-2.65 DOZ.
 TOMATOES: RED #1 MEDIUM TO
 LARGE 9.00-18.00 25 LBS., YELLOW
 12.00-15.00 25 LBS.
 WATERMELONS: SM. TO LARGE
 ALL VARIETIES .85-3.50 EACH, ICE-
 BOX .70-1.15 EACH.
 ZUCCHINI: GREEN AND YELLOW
 SMALL AND MEDIUM 3.50-7.50 ¼
 BU., LARGE 1.00-5.00 ¼ BU.

LEBANON AUCTION

Located 3 miles North of Lebanon, PA along Route 72

Begins
Thursday, July 14th
3:00 P.M.

PRODUCE & FRUIT

Wholesale

GROWERS & BUYERS

Welcome

8% Commission - Monday Settlement.

WILMER HOOVER
 2862 HARVEST RD.
 ELIZABETHTOWN, PA 17022
 (717) 367-8379

PAUL N. HORST
 1840 RT. 72 N.
 LEBANON, PA. 17046
 (717) 274-0762

Nelson L. Ebersole, Auct. # AU001307-L

Leinbach's Shippensburg Produce Auction

(717)532-5511
 Shippensburg, PA
 Average Prices Of #1 Produce
 June 30, July 1, 4, and 5
 Price Differences are Quality, Size or
 Days
 Open 10 a.m. Mon., Tues., Thurs. & Fri.
 Report Supplied by Auction
 APPLES: 3.00-4.00 ¼ BU.
 APRICOTS: 14.00-16.00 8 QT. FLAT.

QUALITY FEEDER PIG AUCTION

S & J VILLARI
 LIVESTOCK
 Gumboro, Delaware
 Monitored Herd
 feeder pigs from the
 DELMARVA
 PENNINSULA
 Auction Dates:
 2nd & 4th
 Fridays
 of the month.
 Time of Sale:
 1:00 p.m.
 Tele-auction available
 Delivery can be arranged
 For more information,
 please call:
 1-800-238-0801

THE Scoular

C · O · M · P · A · N · Y

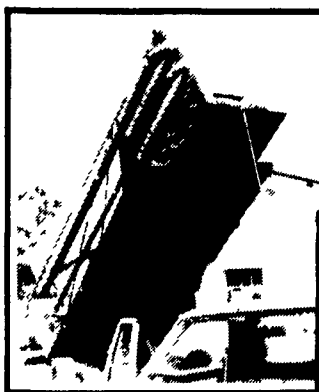
GRAIN DIVISION

BUYING AND SELLING SOFT RED AND WHITE WHEAT

Picked Up and Delivered Bids
 Available
 Prices Quoted for Spot or Future
 Delivery
 Prompt Payment

ASK FOR
BILL KRUEGER
(800) 487-1474
WE WANT TO BUY
YOUR WHEAT

CHORE-TIME BINS AND AUGERS



Take 'em Down!

We Stock Truckloads
 Of Chore-Time Bins &
 Miles Of Chore-Time
 FLEX-AUGER



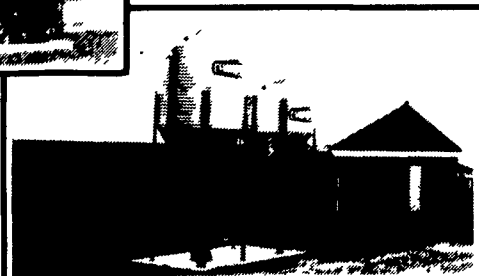
Put 'em Up!



Bins...
 Large Or Small

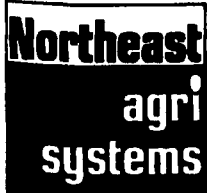


We Will Assemble & Deliver
 Bins To Your Farm



Custom Applications

Authorized **CHORE-TIME** master distributor since 1982



Northeast Agri Systems, Inc.

Flyway Business Park
 139A West Airport Road
 Lititz, PA 17543

Ph: (717) 569-2702

1-800-673-2580

Store hours Mon - Fri 7:30 to 4:30
 Sat 8:00 to Noon
 24 Hr. 7 Day Repair Service



NOW OPEN

IN
 FEDERALSBURG, MD.
 305 UNIVERSITY AVE.
 (Formerly Long Lumber)

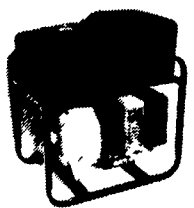
410-754-9434

STORE HOURS:
 7:30 A.M. - 4 P.M.
 Monday - Friday

Irrigation Pumps

The Aqua Pump

- * 2"x2" High Pressure Pumps
- * 85 PSI Max
- * 110 GPM Max
- * 5.5 hp Honda or Vanguard Engine Model 25PB-6
- * Roll Fame with 6.6 Gal. Fuel Tank
- 8 Hp Diesel Engine with roll frame and pressure pump, 75 PSI Max 130 GPM Max (65 GPM at 65 PSI)



Parts for
 Honda Engines
 Honda Pumps
 IPT Pumps
 Wisconsin Engines

Seals available for
 most brands of pumps

Service for
 Most brands of small
 Gasoline & Diesel
 Pumps up to 50 hp,
 safety shutdown
 systems designed and
 installed pump
 performance testing

Don't scrap those good old pumps with
 obsolete or blown engine, Repower them
 with a new diesel or gas engine

Mfg & Distributed by

G D EQUIPMENT
 385 W. Metzler Rd.
 Ephrata, Pa 17522
 (717) 859-3533

